

How to install downloaded applications

Limnor applications are distributed in CAB files. One CAB file is one application. When you get Limnor applications in CAB files, how do you install them to your computer so that you may try and modify them?

Suppose you downloaded some Limnor CAB files in your local hard disk:



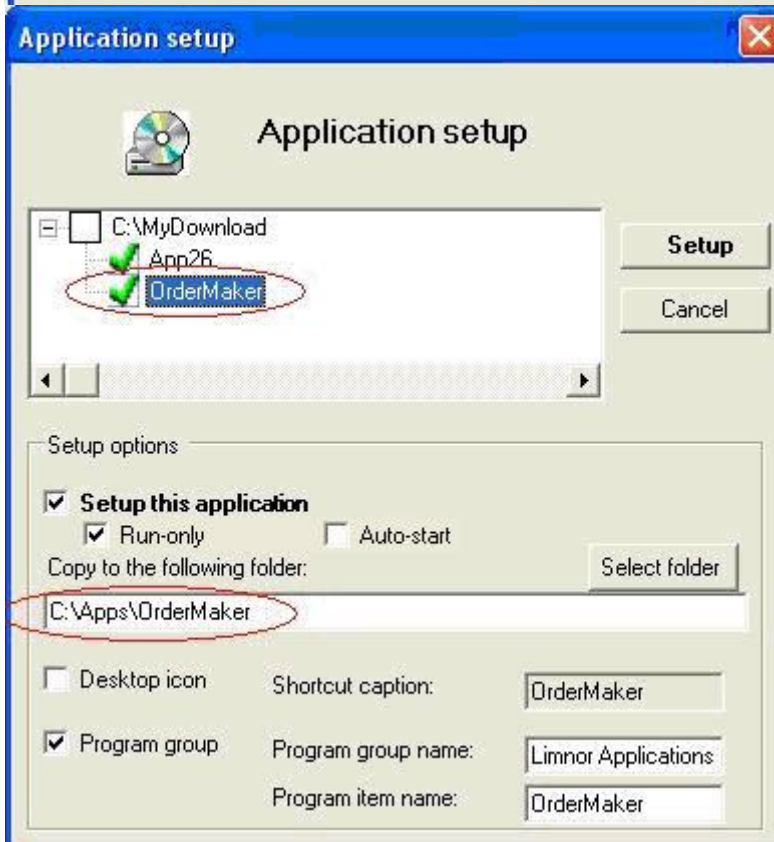
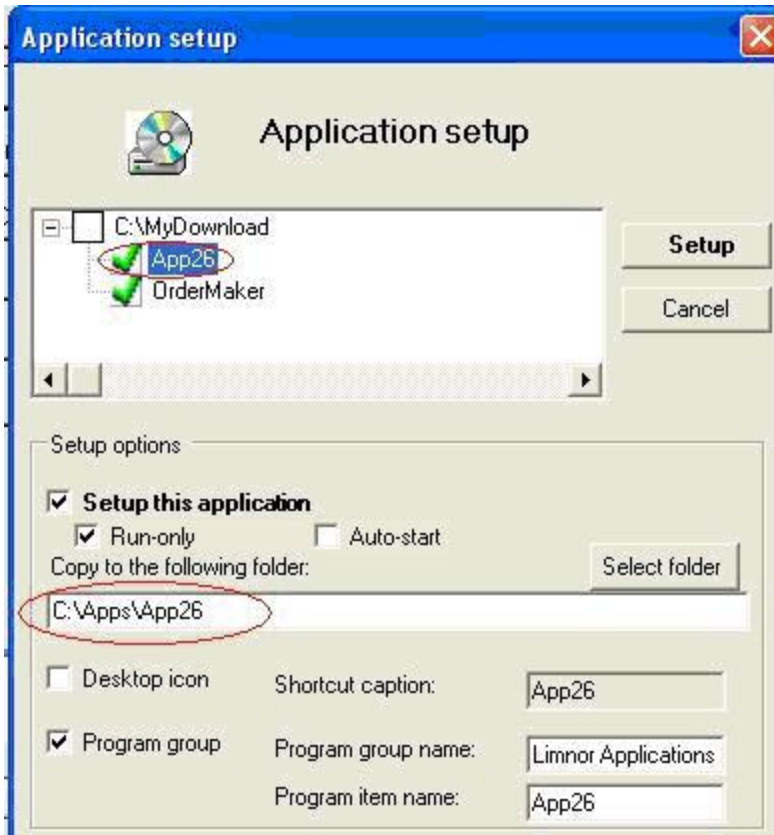
Start Limnor, choose “File | Install applications”:



Select the folder containing the CAB files:



For each CAB file you want to install, mark it with , and choose a folder for it:



If you want to open the application in design mode then uncheck Run-only option.



If you check Run-only option then the application file (*.ezp file) will be set read-only and you cannot modify the application. That is, when the application is running, it will not get into design mode.

If you check Auto-start option then the application will automatically starts when the computer is started.

After you make specified all the installation options for every CAB file, click **Setup** button.

Once the installation is completed, if Run-only option is unchecked, you may open the newly installed application by menu “File | New application”, and choose the application from the list:



If Run-only is checked, the application name will not appear in the above list. You need to click “Find/New” button and then click “Find” button to locate the application’s ezp file to run the application. You may also double-click the ezp file to run the application. This is a preferred way to run applications because it only loads components that are used when your application needs it. If you run Limnor in design mode, it loads all components into memory at the same time, it will be slow and consume more memory.