

## How to View Event Map

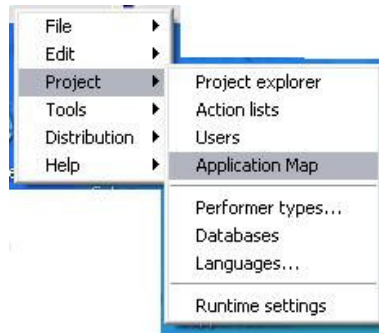
- 1 What is event map..... 1
- 2 Application Event Map..... 2
- 3 Page Event Map..... 3

### 1 What is event map

An application is driven by events. One performer fires events; you as a developer assign actions to the events so that the events trigger the actions to be executed. Each action is performed by one performer. We may draw a line from the event firing performer to the action performing performer to graphically represent this application flow. Event map uses this way to graphically describe all event-action-list mapping you made.

There are two types of event maps. Application event map only shows pages and the application performer. Page event map shows all performers inside one specific page.

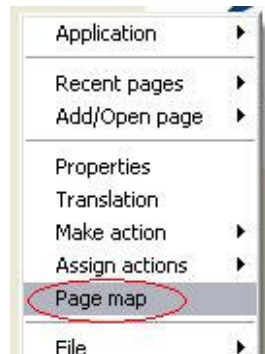
Menu “Project | Application map” is used to bring up the application map.



You may also click “Map” button on Project Explorer to access the application map.



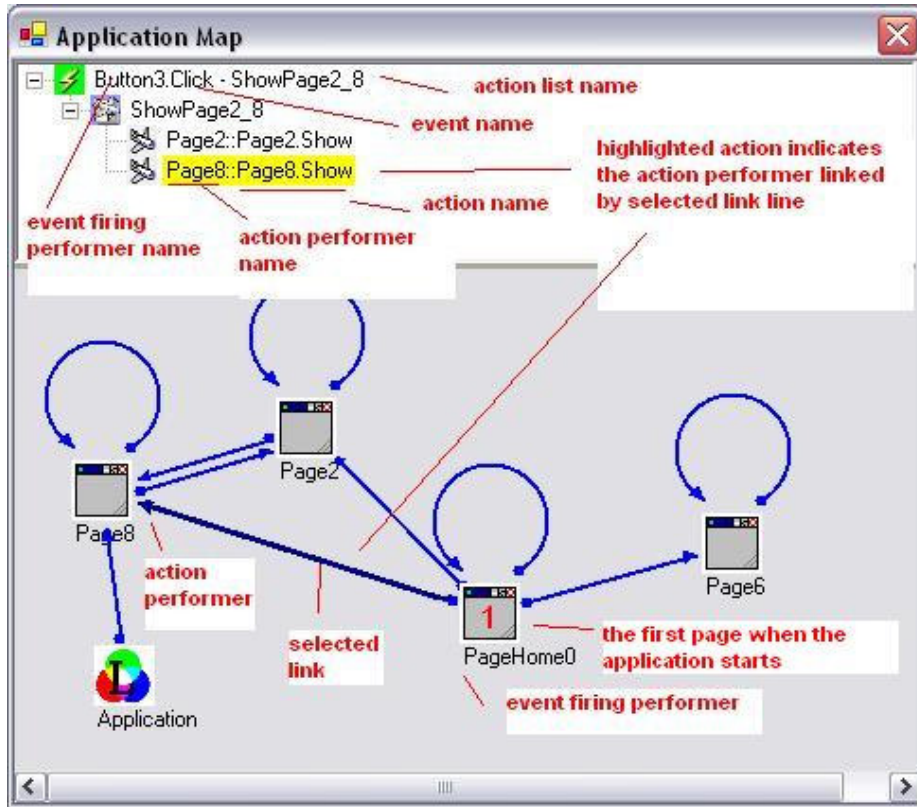
On the application map right-click on an icon (representing a page or the application performer), choose “Zoom in” menu, the page event map for the page (or the application performer) is brought up. You may also right-click on a page and choose “Page map” to bring up page event map.



## 2 Application Event Map

The page icon with a number 1 on it indicates the first page of the application. You may drag the icons to re-position them to make the map easier to view.

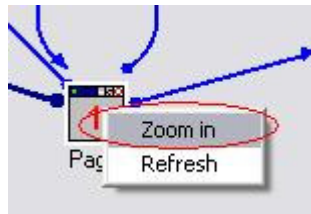
You may click on each event link line to select it. The selected link line will be highlighted with thick line and darker color. The events represented by the selected link line will be displayed on the top of the event map. In the example below, only one event is represented the selected link line:



A dot at the end of the link line indicates the performer is the event firing performer. An arrow at the end of the link line indicates the performer is the action performer.

If an action list is linked to the event then all actions will be displayed on the top. Not all actions in the action list are performed by the performer linked by the selected link line. Those actions indeed performed by the performer linked by the selected link line are highlighted by yellow background.

You may right-click on a page icon and choose “Zoom in” menu to show event map for the page:

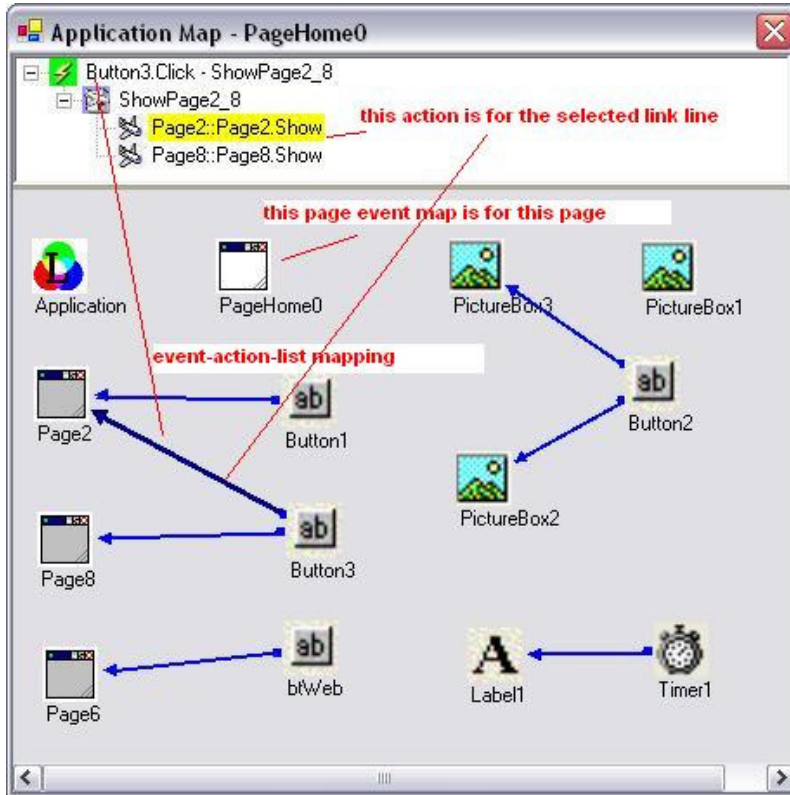


When you change event-action-list mapping, you may choose “Refresh” menu to reload the event

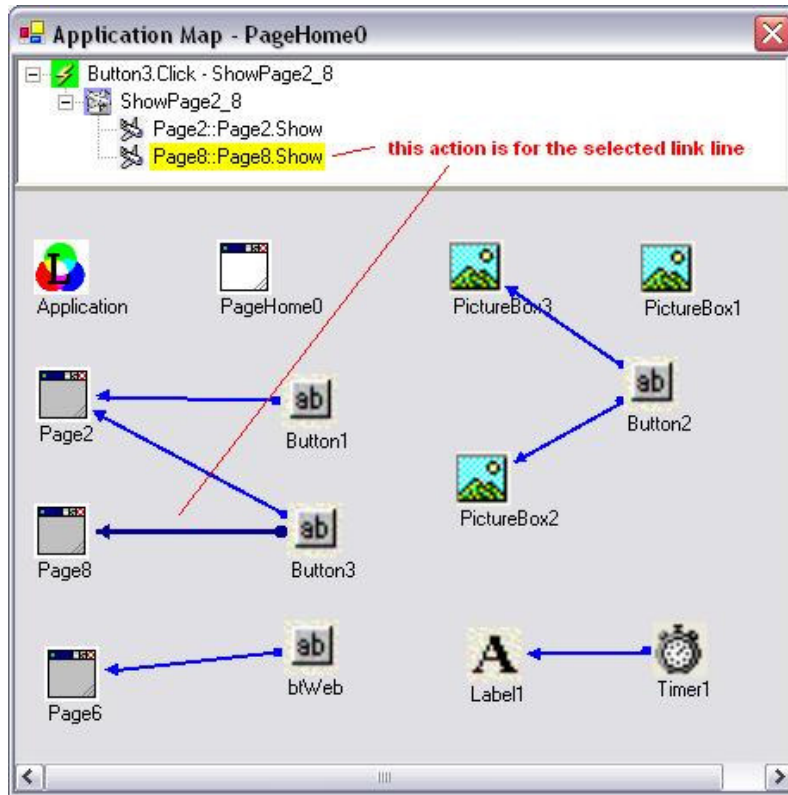
map.

### 3 Page Event Map

Each page event map is for one specific page. On a page event map, all page icons will still be displayed but event link lines starting from the page icons will not be displayed except the page icon for the page specific for the page event map. All performers for the page will be displayed as icons. Event link lines will be displayed to graphically show the event-action-list mappings. The page icon with white background color indicates the page for this page event map.

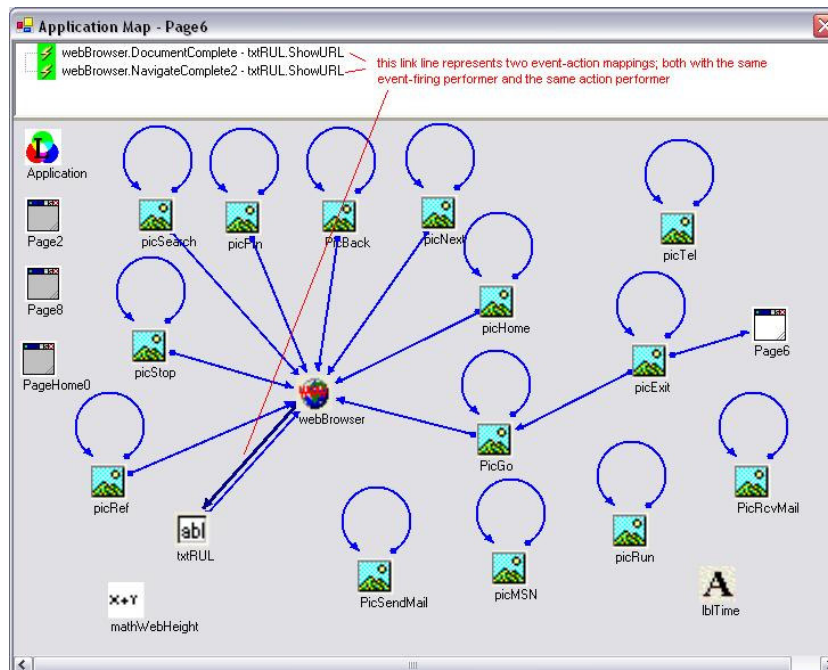


In this example, we can see that the Click event of performer Button3 triggers action list ShowPage\_2\_8 which has two actions; one action is Page2.Show which is highlighted because Page2 is the action performer and the selected link line is linked to Page2; the other action is Page8.Show which is not highlighted because Page8 is the action performer and the selected link line is not linked to Page8. If we select the link line linked from Button3 to Page8 then action Page8.Show will be highlighted:



#### 4 Multiple Event Mappings

One event link line links one event-firing performer to an action performer. But one performer may fire many events and different events may trigger the same action performer to do something. Therefore one event link line may represent more than one event-action mapping.



In this example, the selected link line represents two different event-action mappings. Both event-action mappings have the same event firing performer, `webBrowser`; and have the same action performer, `txtURL` which is a text box. One event is `NavigateComplete2` which is fired by `webBrowser` when it navigates to a new URL. This event is mapped to action `txtURL.ShowURL` which displays the URL of the `webBrowser` on the text box. The other event is `DocumentComplete` which is fired by `webBrowser` when it finishes loading the contents. The URL might be changed during the contents loading. This event is also mapped to action `txtURL.ShowURL` so that changed URL can be displayed in the text box.