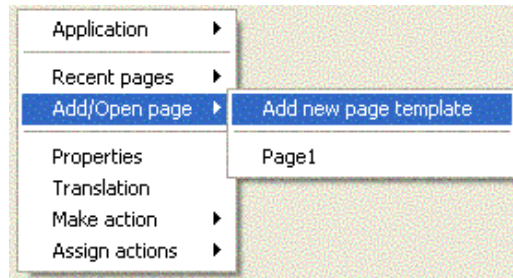


Lesson 4. Create new pages

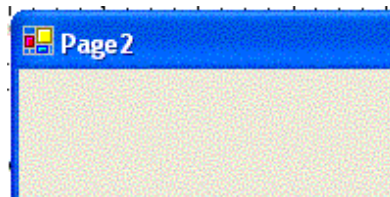
In this lesson, we are going to create a page and use a button on the home page to open the new page.

4.1. Create a new page

Right-click on a page or background; select Add/Open page, select Add new page template (see the next section for explanation of **page template**):



A new page template is created and displayed on the screen:



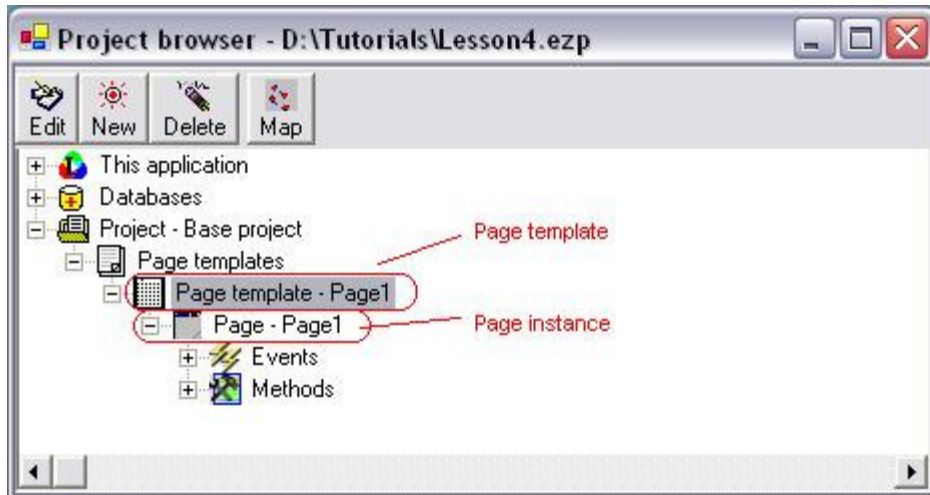
Notice that the page title is “Page 2”.

The above menu can also be brought up by right-clicking on the background if the desktop is covered by the background color. You can cover or uncover desktop by “Cover desktop” and “Show desktop” options in the main menu:

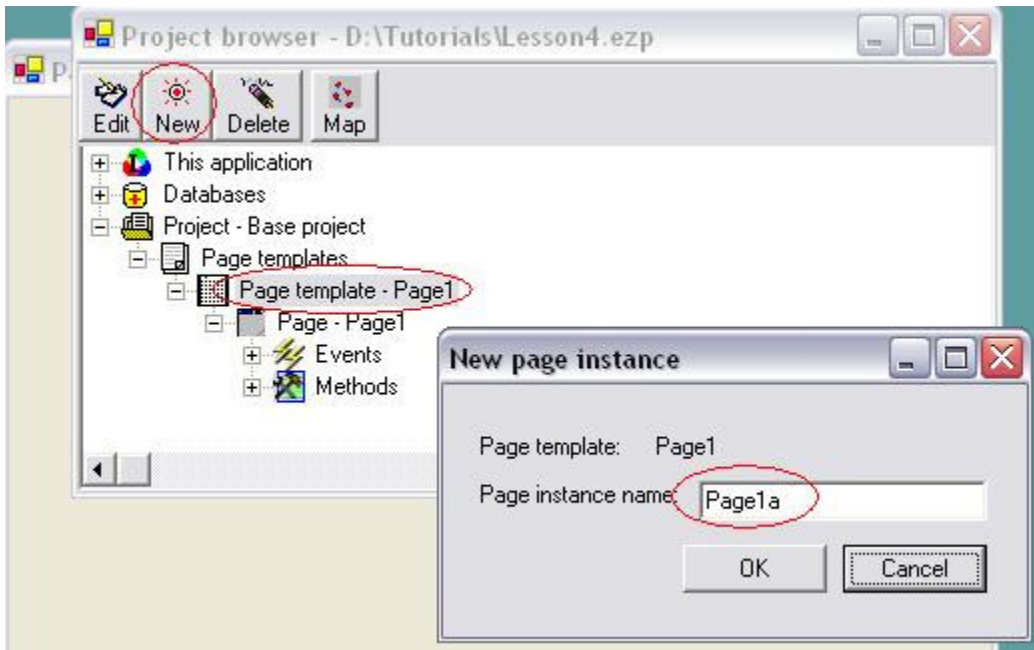


4.2. Page template and page instance

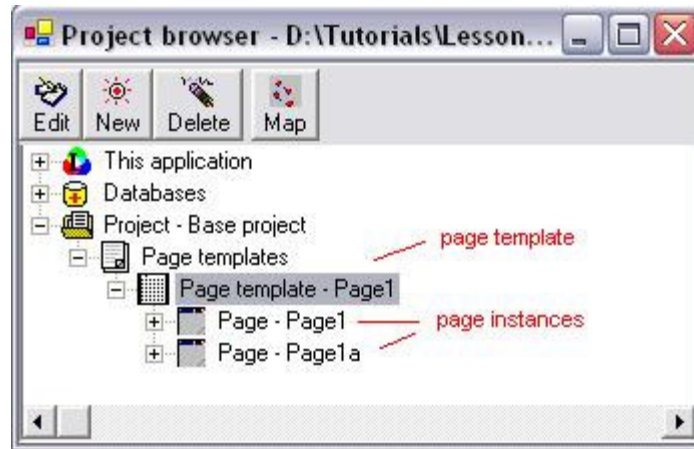
When creating a new page one **page template** and one **page instance** are created:



This automatically created page instance is called the **default page instance**. There can be many page instances under one page template. To create a new page instance, select the page template and click button “New” button; give a new name for the new page instance:

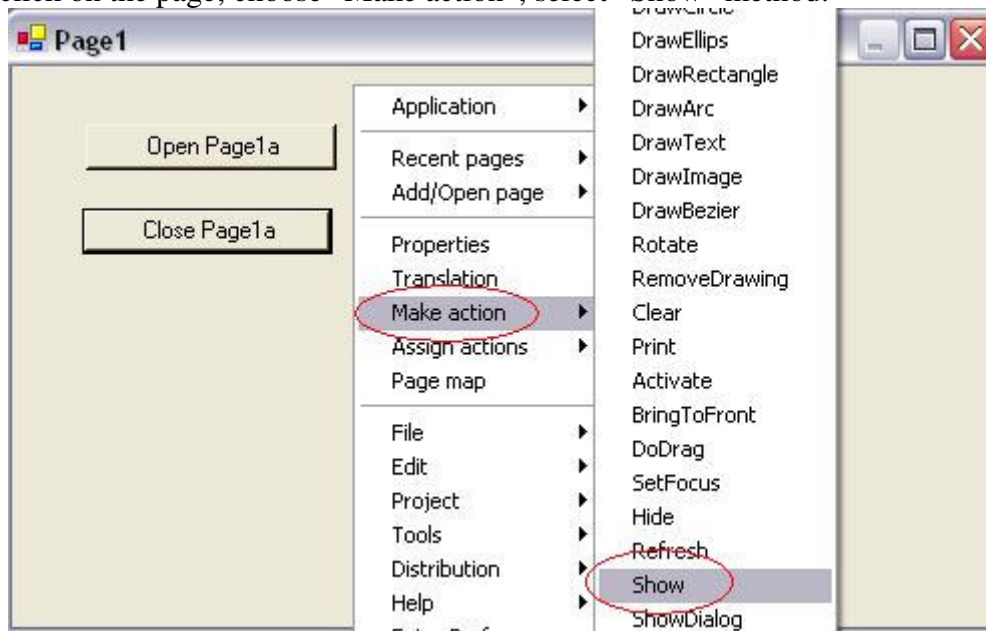


You can see the newly created page instance under the page template:



All page instances have the same design as the page template. When you are designing a page, you are designing the page template. But different page instances may have their own actions.

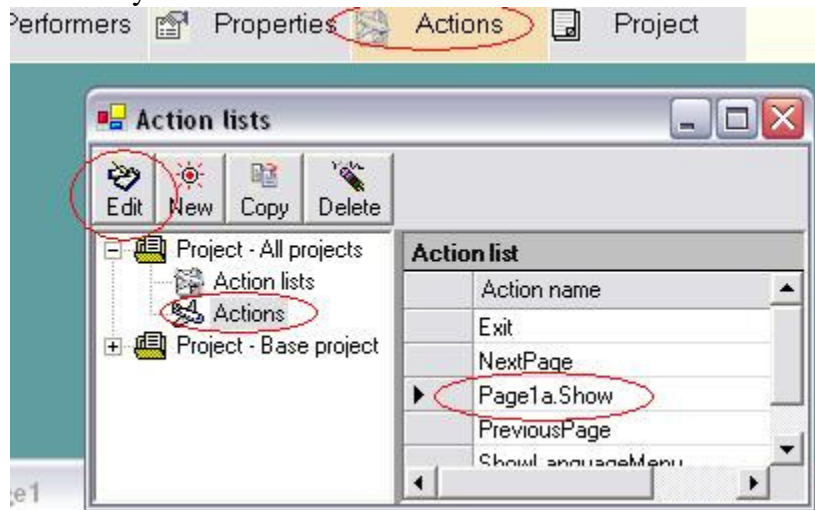
Mostly you do not need multiple page instances. When you use “Make action” menu to create actions for a page, the action owner is the default page instance. For example, right-click on the page; choose “Make action”; select “Show” method:



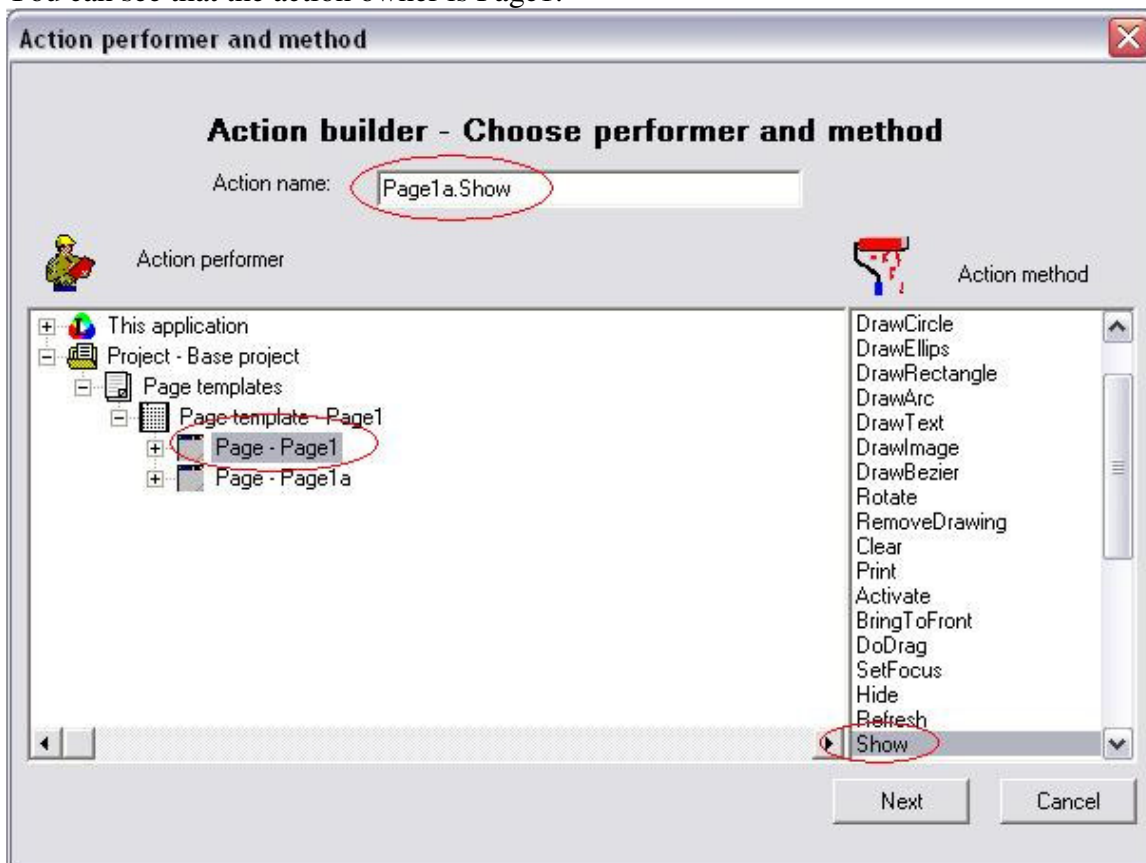
Give an action name, say, “Page1a.Show”:



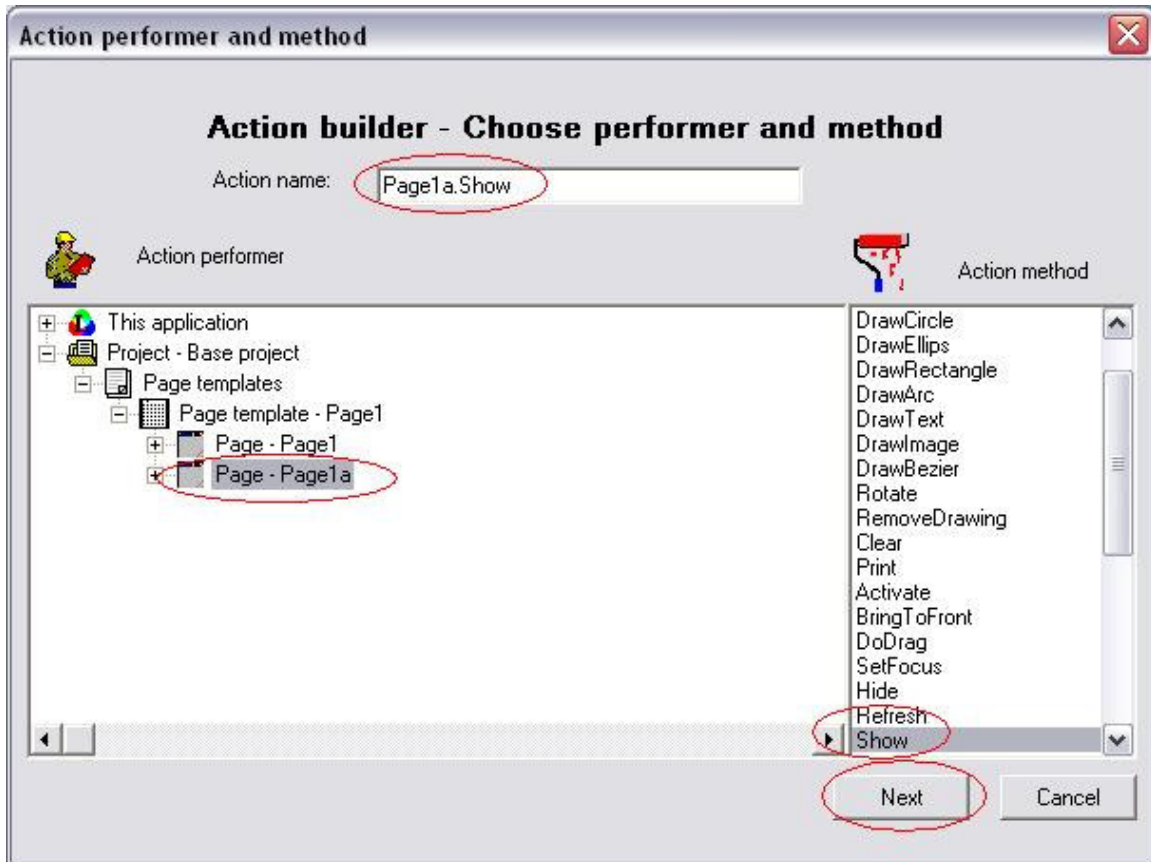
But this action actually will be performed by page instance Page1, not page instance Page1a, because Page1 is the default page instance. We need to modify this action to make Page1a be the owner of the action. Open the Actions window, find this action, click “Edit” button to modify this action:



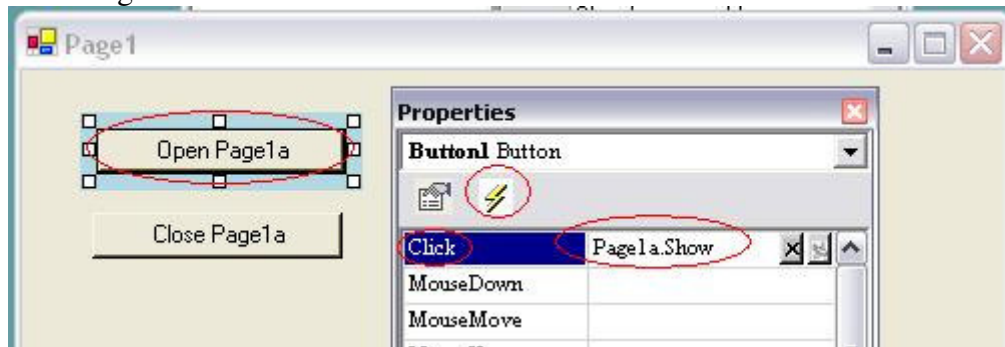
You can see that the action owner is Page1:



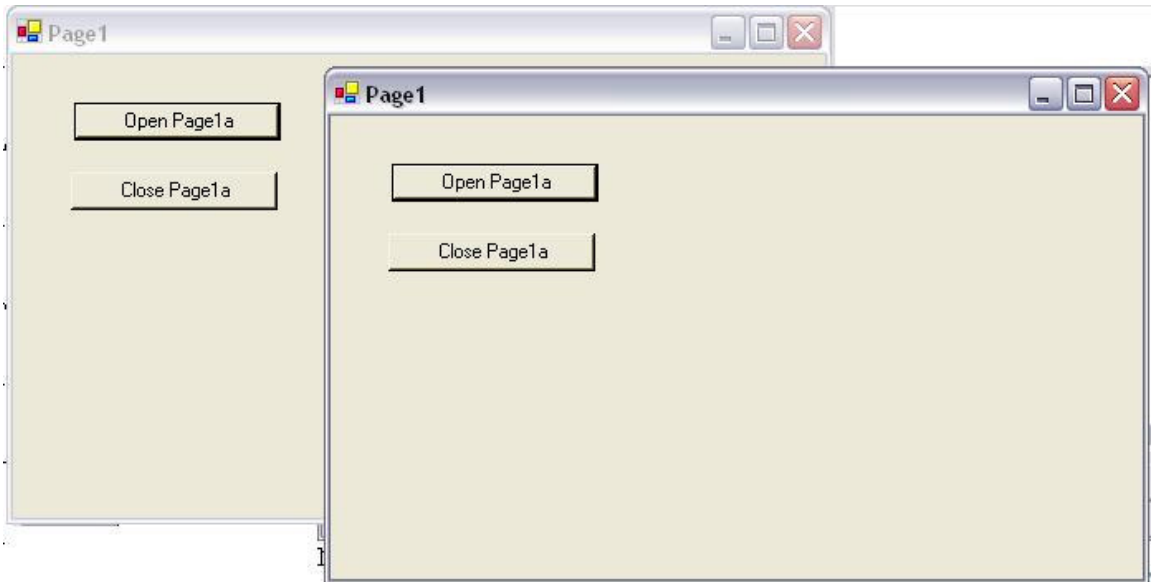
We can change the action owner to be Page1a:



Now let's assign this action to a button:



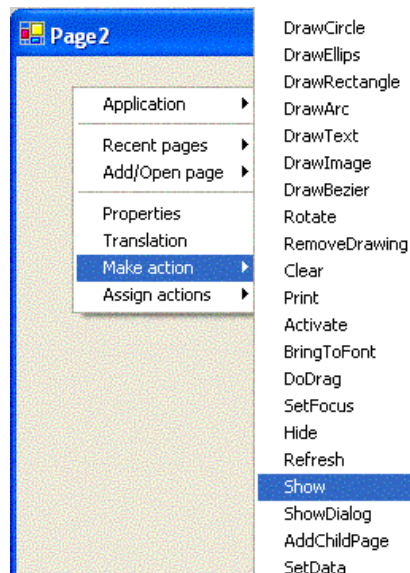
Now press F2 to run the program. Click button "Open Page1a", an identical page appears. That is the page instance Page1a. Before clicking the button, you should move the first page to a different screen position because the second page instance will appear at the same position as the first page. If you do not move the first page first then it will appear clicking the button nothing happens, because the second page instance covers the first page instance.



4.3. Navigate to the new page

Mostly from one page you will open page instances from other page templates. A page has a Show method and a ShowDialog method. You may use one of them to open the page. “ShowDialog” will block the other pages until the opened page is closed. “Show” will not block other pages. Block means not respond to user inputs (keyboard and mouse).

In section 4.1., we create a new page template, Page2. We can make an open page action to open its default page instance: Right-click on page 2; select “Make action”, select “Show” method:



Accept the default action name “Page2.Show”.

In the same way, we can create an action to show page 1, and call it “Page1.Show”. To make this action, you just right-click on page1 instead of page2, and the rest of the steps are the same.

Suppose we want to use a button on each page. When the user clicks the button, the other page appears.

Now let’s add a button on page 1 and add a button on page 2; set button captions to “Open Page 1” and “Open Page 2” respectively.

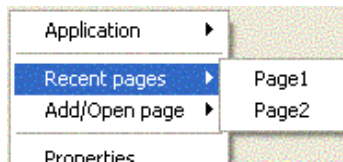
Right-click on the button on Page1; choose “Assign actions”, choose “Click”, select the action “Page2.Show”.

Right-click on the button on Page2; choose “Assign actions”, choose “Click”, select the action “Page1.Show”.

We are done. Press F2 to run the program. Page 1 appears. Click the button, Page 2 appears. Click the button on Page 2, Page 1 is brought to the front.

Press F2 again to go back to design mode.

In design mode, you can open a page to design it by “Recent pages” or “Add/Open page” menus (right-click on a page or background):



Note: when you opened many pages on the screen, you can also press Alt-W to bring up a list of all open pages and choose one page to bring it to the front.

4.4. What we learned in this lesson

- New pages can be added to your application.
- Many actions are available so that you can do programming for page navigations.

4.5. Exercises

Exercise1.

Based on the program created in this lesson, create a new page and open the new page by clicking on Page 2.

Exercise2.

Play a video file on Page 1, and when the video finishes, show Page 2.

Hint: if you use MediaPlayer9 to play video, assign Page2.Show action to MediaEnded event (see Lesson 2); if you use MediaControl to play video, assign Page2.Show action to Finish event.