

Use MySQL in Limnor

This article describes how to use MySQL in Limnor. We will use ODBC to connect to MySQL.

Install MySQL Database Server

Create a Database

Create ODBC Data Source

[Connect to MySQL](#)

Edit Database Schema

Install MySQL Database Server

You may download MySQL from <http://www.mysql.com>. When installing MySQL it will ask you to specify the folder for the database file. The default folder provided by MySQL setup will make the installation unusable because it contains spaces. You must specify a folder without spaces.

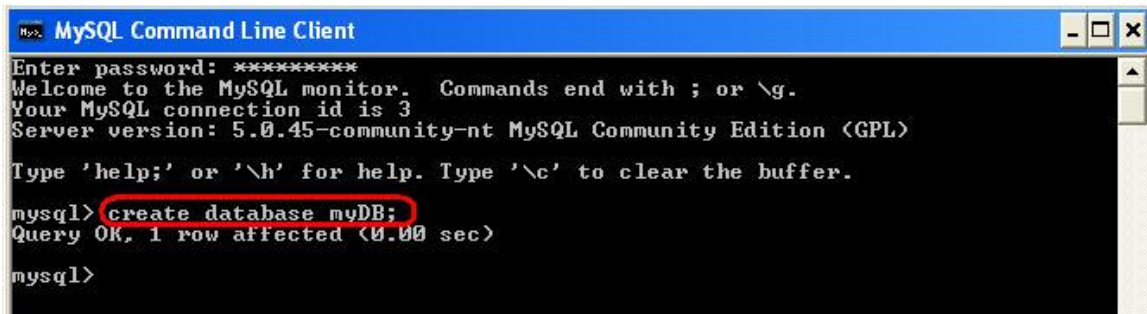
Create a Database

Launch MySQL console from “All Programs”:



Type in the password to login. Use command “create database {database name};” to create a database. For example:

```
create database myDB;
```

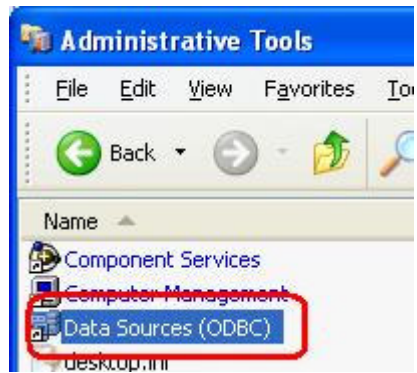


Create ODBC Data Source

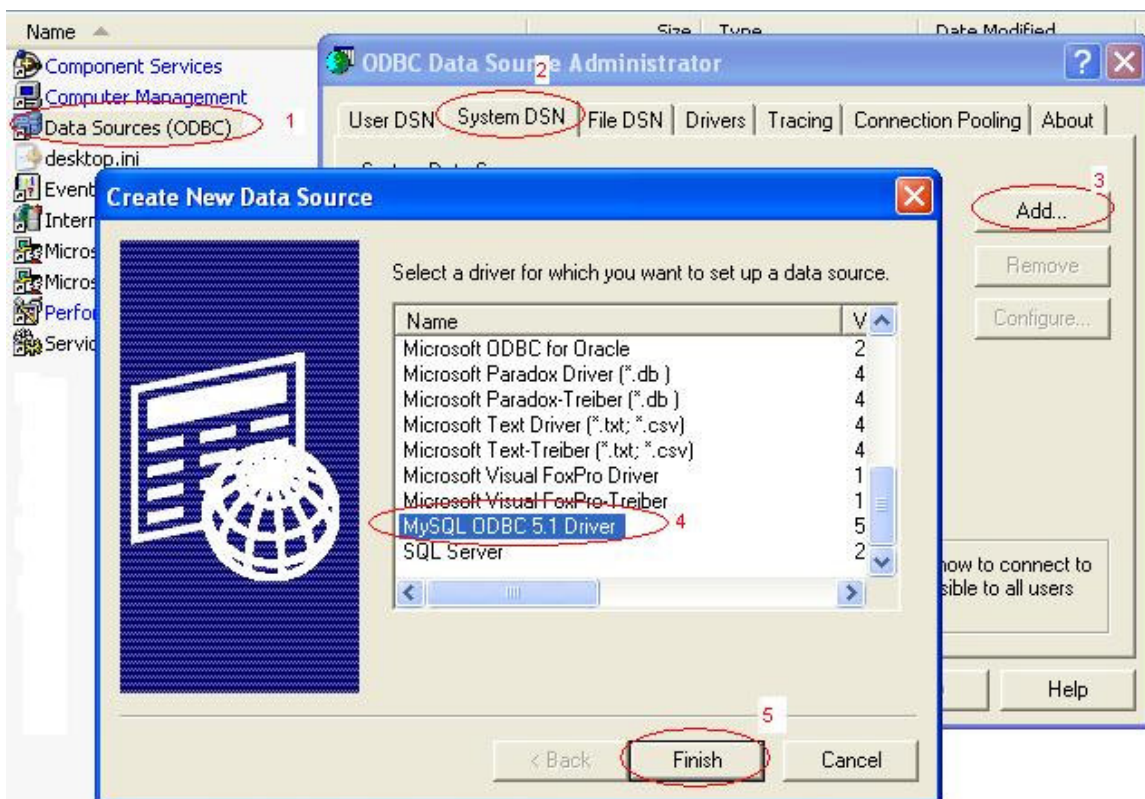
From <http://dev.mysql.com/downloads/connector/odbc/5.1.html#win32>, download and install an ODBC driver.

Note that the ODBC driver must be installed AFTER MySQL server being installed. If MySQL server is uninstalled and reinstalled, the ODBC driver has to be uninstalled and reinstalled as well.

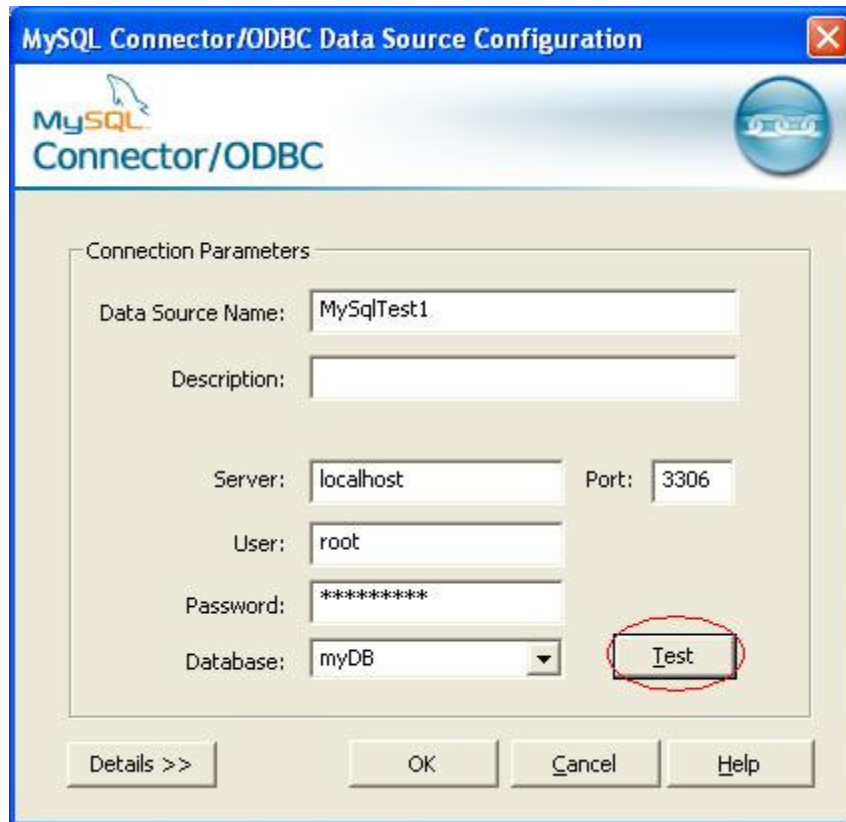
From Control Panel -> Administrative Tools, launch Data Sources (ODBC):



Add a system data source:



You may give a Data Source Name and Description. The other parameters must match the settings on your computer:



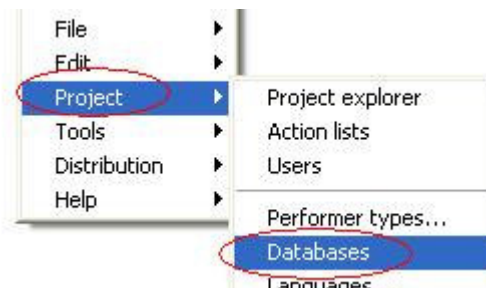
The Server should be an IP address or the server name for the computer where MySQL server is installed. You can use localhost only if MySQL is installed on the same machine.

Click Test button to make sure the settings you entered are correct.

Connect to MySQL

Suppose the ODBC data source name for MySQL is “MySQLtest1”. We will create a Linnor database connection using this data source name.

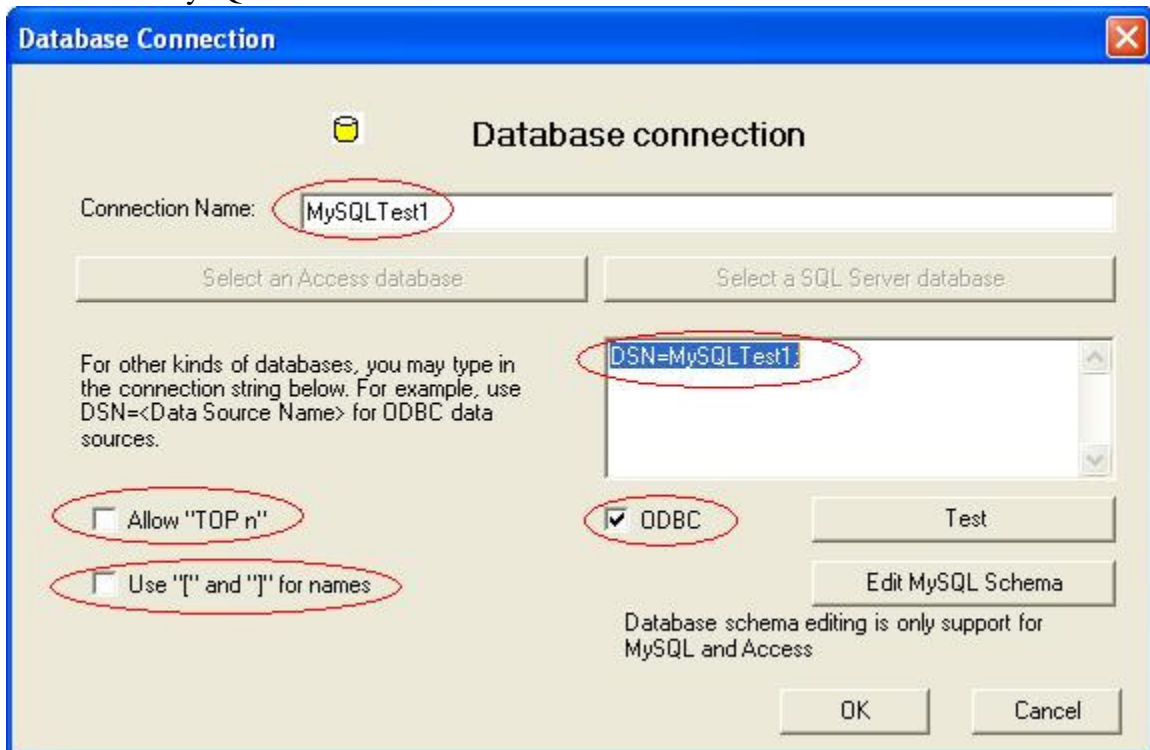
Choose “Project | Databases” menu to manage database connections used for the current application:



You will see all the database connections listed. Right now, this list is empty. Click “Add” button to add a new database connection:



Give a connection name for this new database connection. You may use any name. Here we just use the MySQL ODBC data source name for easy of remember. To use any ODBC data source, type in “DSN=<ODBC data source name>”. In our case, it is “DSN=MySQLTest1”:



Note that you need to check “ODBC” check box to tell Limnor it is an ODBC data source.

You need to uncheck both <Allow “TOP n” check box and <Use “[“ and “]” for names> check box.

Microsoft databases allow you to just return the first n records by such SQL SELECT statement: SELECT TOP 100 * FROM MyTable. MySQL does not support this feature.

So you need to uncheck it to tell Limnor not use it.

Microsoft databases allow you to use “[“ and “]” to mark table names and field names.

MySQL does not support. So you need to uncheck the check box to let Limnor not to use it.

We are done. We can use this database connection in this application now.

Edit Database Schema

You may use MySQL console to edit database schema, using MySQL database administrator language. You may also buy some GUI tool to do it.

Limnor provides a free graphic user interface for editing database schema. It is the same GUI used for edit MS Access database schema. To use it, click “Edit MySQL Schema” button on the dialogue box defining the connection:

