

# Remote Computer Monitoring

1	Introduction.....	1
2	Configuration.....	1
3	Settings.....	2
3.1	Picture folder .....	3
3.2	Printer to be monitored .....	3
3.3	Other files to send.....	4
3.4	Send by email or FTP .....	4
3.5	Schedule.....	4
3.6	Coin Acceptor Monitoring .....	4
3.7	Smartcard Reader Monitoring.....	4

## 1 Introduction

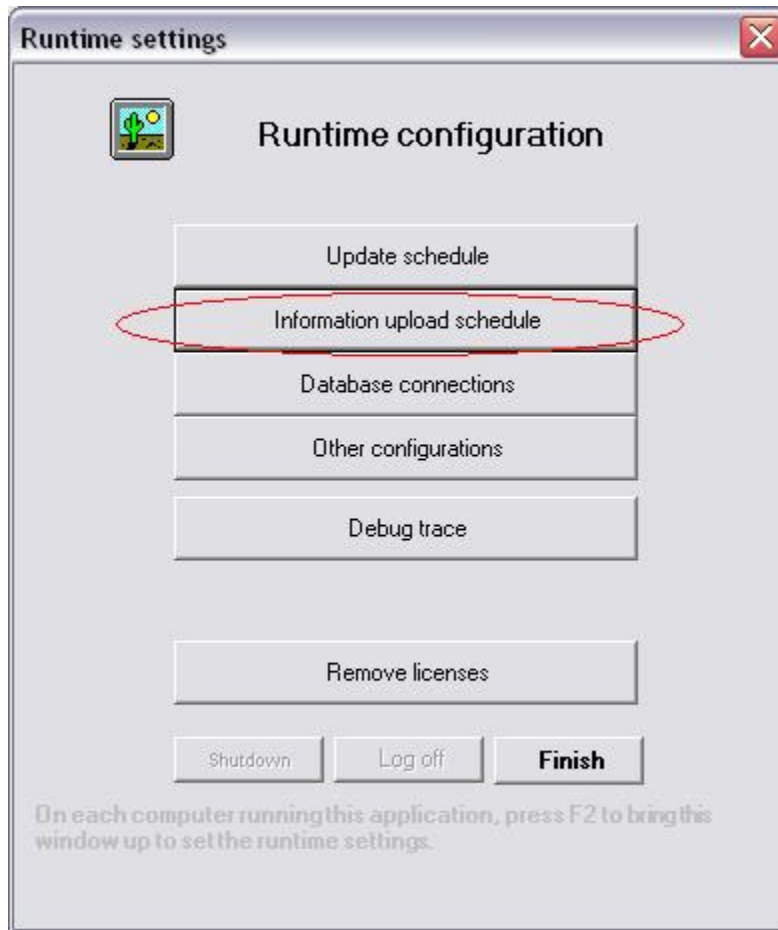
Limnor allows you to monitor remote computers automatically.

If you are making kiosk applications, your kiosks are running 24 hours a day. You want to know they are working fine. You may set it up so that in every few minutes, a kiosk screen snapshot is taken and compressed and sent to you via email, FTP over internet, together with the status information about printer, coin acceptor, smartcard reader, and other information you want to know about your kiosks. This way, you may automatically monitor many remote kiosks, from your office, or even from your home, even the kiosks are located in other countries.



## 2 Configuration

At design time, you may use menu “Project | Runtime settings” to bring up configuration options. At runtime, you may press F2 key to bring up configuration options. Click “Information upload schedule” button to do configuration:



### 3 Settings

You set the settings for remote monitoring by following dialogue box:



### **3.1 *Picture folder***

This is the folder for creating screen shot image. The application should be able to create files in the folder you specified.

### **3.2 *Printer to be monitored***

Select a printer to monitor. The status of the selected printer will be sent via email or FTP together with the screen shot. Note that only when a printing is requested can the system detect whether the printer is working fine or it has problems.

### 3.3 Other files to send

If you have your own programs to monitor the computer, and if the monitoring programs may collect information into files, then you may specify these files here. These files will be sent via email or FTP together with the screen shot.

### 3.4 Send by email or FTP

You may specify how the information may be sent.

If you use email to send monitoring information then you need to make sure the SMTP server you specified is working. If SMTP setting is empty then the default SMTP server on local computer will be used. You need to make sure the default SMTP server is working.

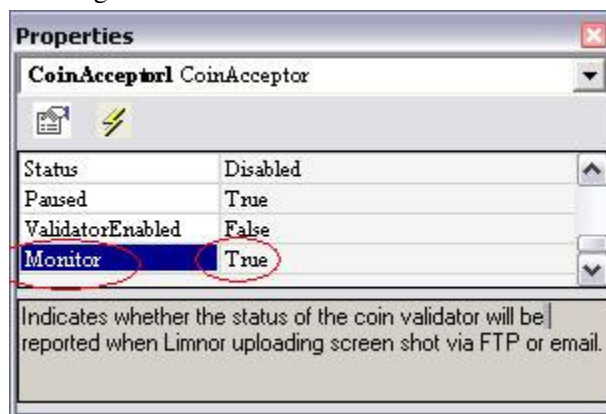
### 3.5 Schedule

You may specify how many minutes the monitoring information should be sent.

Check “Start” option to enable remote monitoring. Uncheck “Start” option to disable remote monitoring.

### 3.6 Coin Acceptor Monitoring

Coin Acceptor performer has a property “Monitor”. If you set this property to True then the status of the coin acceptor will be sent together with the screen shot.



### 3.7 Smartcard Reader Monitoring

Smartcard Reader performer has a property “Monitor”. If you set this property to True then the status

of the smartcard reader will be sent together with the screen shot.

