

Doing Runtime Settings

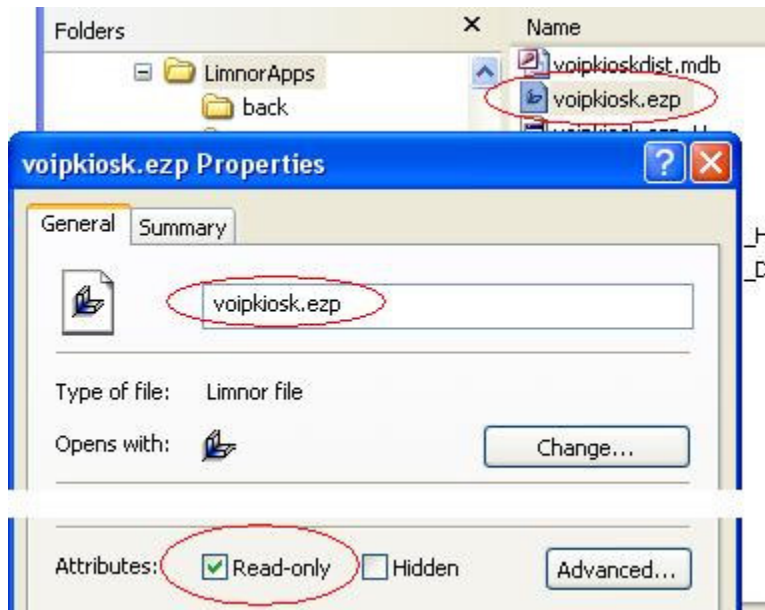
Many performer properties in your applications should have different values when deployed than what they are on your develop computers. On each computer your application is deployed, your users may set these properties themselves. Such properties are called runtime settings. This document describes how your users can set these runtime settings.

If you are a registered Limnor user then you are free to modify and include the contents in this document in your own documents for your users, as long as your documents are for your applications developed in Limnor.

Bring up Runtime Settings at Runtime

Bring up Runtime Setting – By F2 key

Each Limnor application has a main file with ezp file extension. For example, voipkiosk.ezp. If you set this file to read-only then this application will not go into design mode.



When your user runs this application, it will go into run mode. Press F2 key, a log in dialogue box appears:



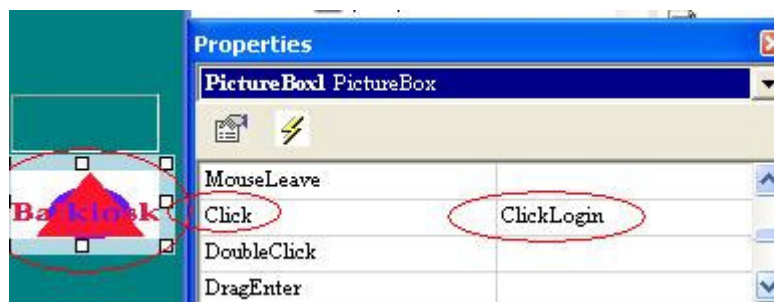
The log in name and password are created previously by you or your users. The purpose of log in is to only allow authorized persons to change runtime settings. Once the log in succeeds, the runtime setting dialogue box will appear.

Bring up Runtime Setting – By Action

Many users may not know that F2 key will bring up runtime settings. Or, you may want to design your own user interface to bring up runtime settings. The Application performer has a Config method. This method will bring up runtime settings.



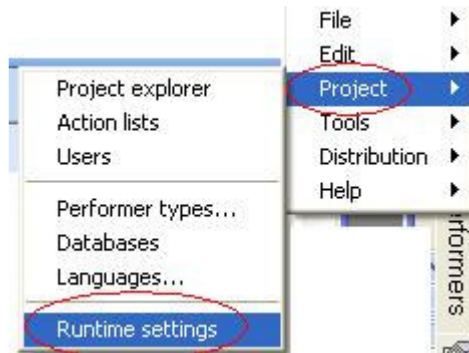
You may use it to make an action and assign the action to a button or other performers' events:



In the above example, when the application is running, the user clicks the picture, runtime settings will appear.

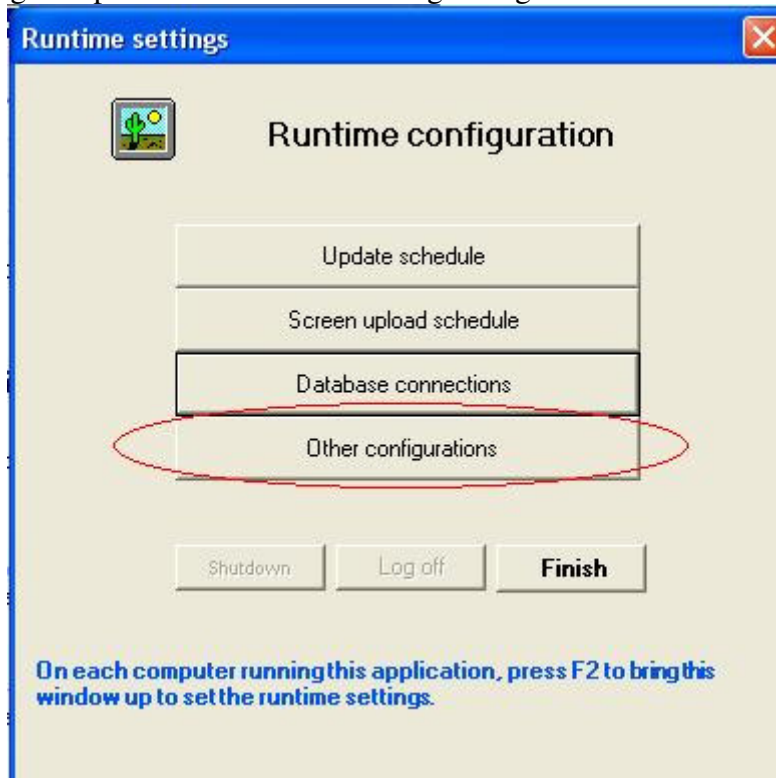
Bring up Runtime Settings at Design Time

At design time, you may also bring up runtime settings by menu “Project | Runtime settings”

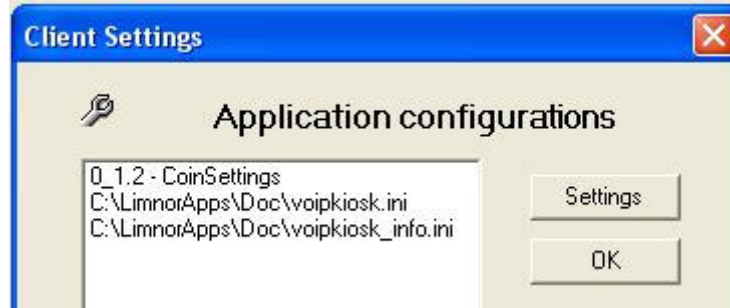


Setting Runtime Settings

Runtime settings are presented via the following dialogue box:

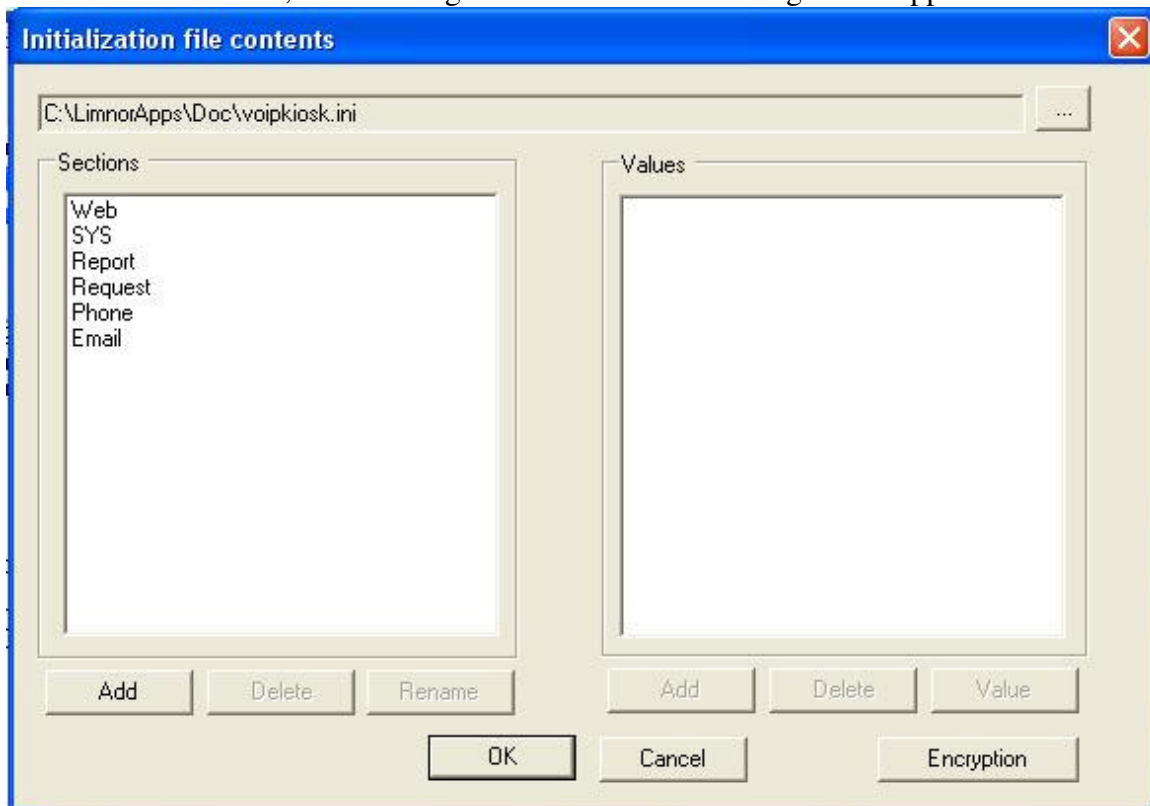


Click “Other configurations” button, all runtime settings appears.



Each item in the list is one property used in your application. So the list is different for different applications.

In the above example, the first item is for a coin acceptor. You may set coin machine type, com port and coin values for it. The next two items are two configuration files. Click the second item, click Settings button. You will a dialogue box appears:



The above dialogue box is only used for setting a configuration file. Depending on the type of runtime settings, different dialogue boxes will appear.