

# Share Pages and Performers between Applications

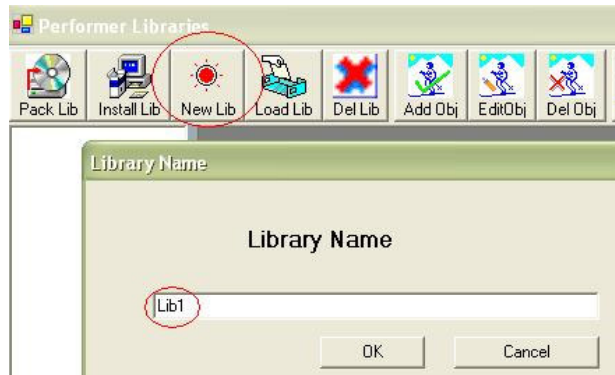
You may share page and performer designs between applications through libraries.

## 1. Create a library

Choose menu “File | Library” to open library manager:

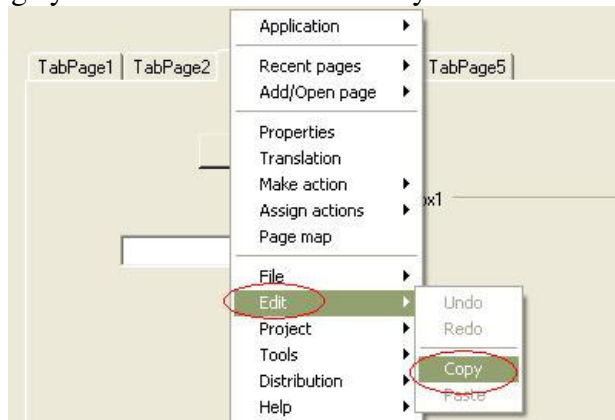


Click “New Lib”:



## 2. Add a page to a library

Right-click on the page you want to add to the library:



Open the library manager; select the library; click “Add Obj”:



Type a page name and description and click OK button. The page becomes a library item.

### 3. Use pages from libraries

Open another application, open the library manager, and select the library item we want to use. Drag the library item and drop it to a page. A new page will be created, which is a duplication of the library item.



### 4. Share performer designs

The above procedure shows sharing of page designs between applications. The same procedure can be used to share performer designs between applications. The difference is at the step 2. Instead of right-clicking on a page and choose menu “Edit | Copy”, we select performer(s) to be shared and right-click on selected performer and choose menu “Edit | Copy”.