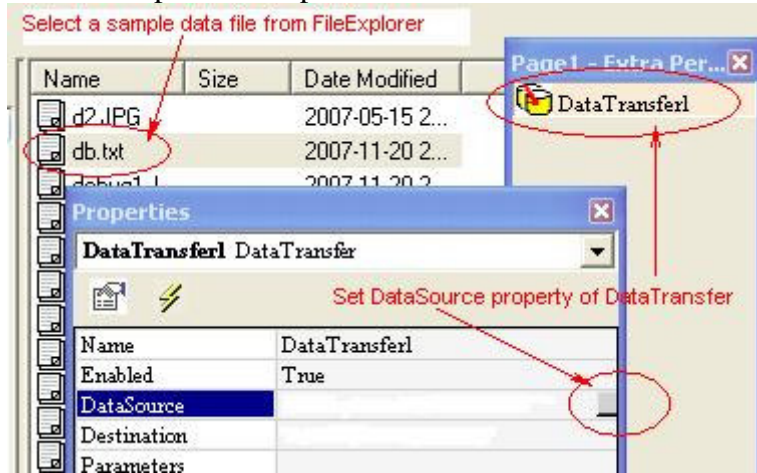


## Use File Explorer as Data Source for Data Transfer

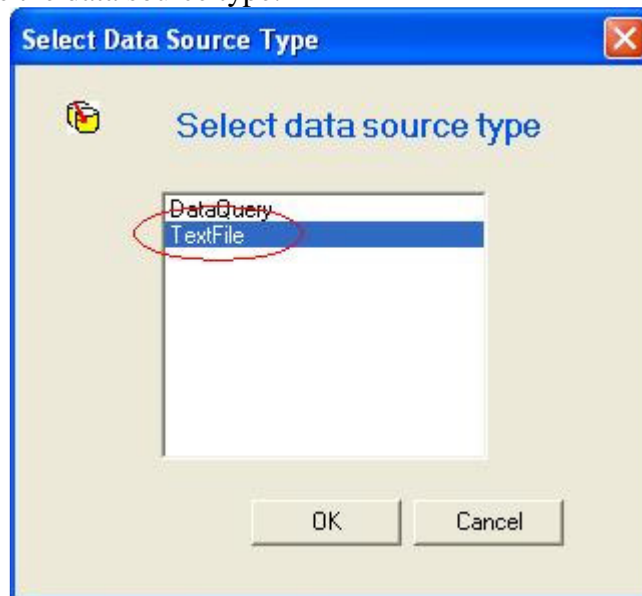
DataTransfer performer can be used to transfer data from data source to data destination. Here we use a text file as the data source and use a database as a data destination. We use FileExplorer performer to let the user to select the text file as the data source.

1. Set DataSource property of the DataTransfer to the FileSelected property of the FileExplorer.

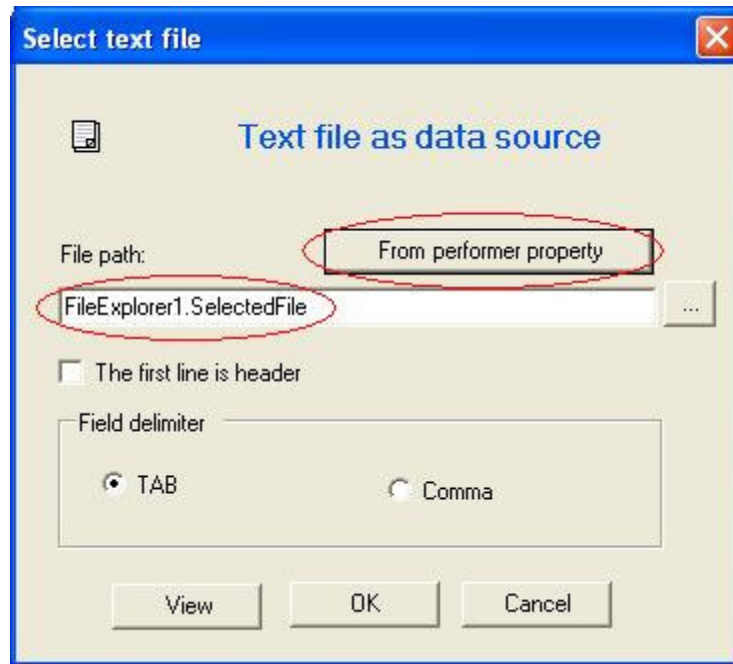
In the FileExplorer performer select a text file which is the data source, for example, a tab-delimited text file. Open the Properties window for the DataTransfer performer:



Select TextFile as the data source type:

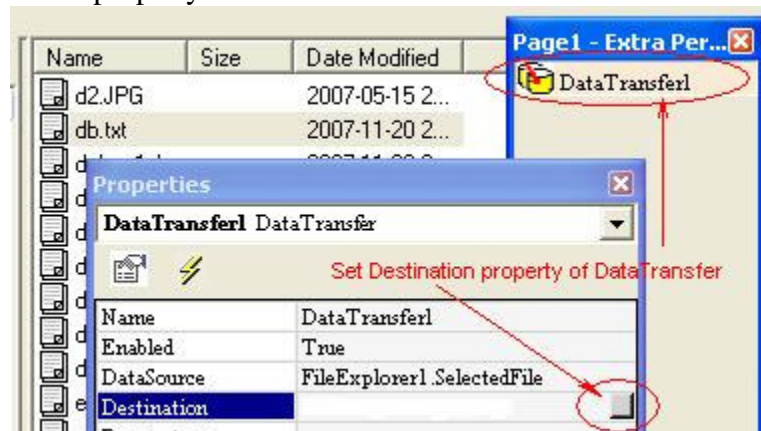


Click button "From performer property" to select the property "SelectedFile" from the FileExplorer performer:

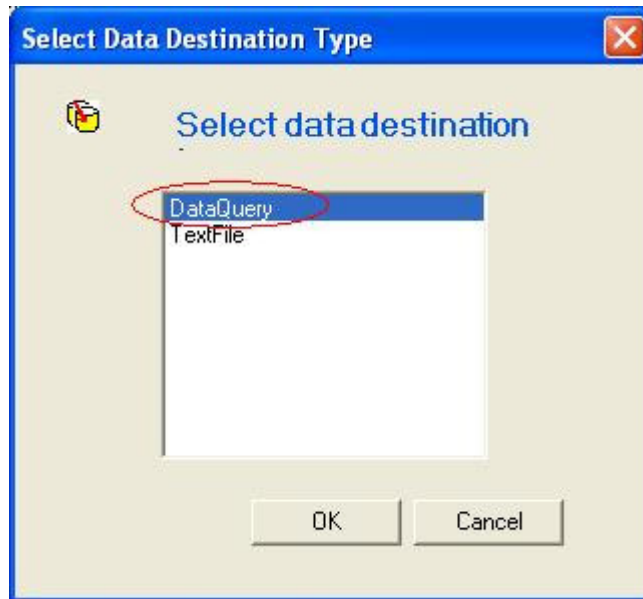


## 2. Set data destination

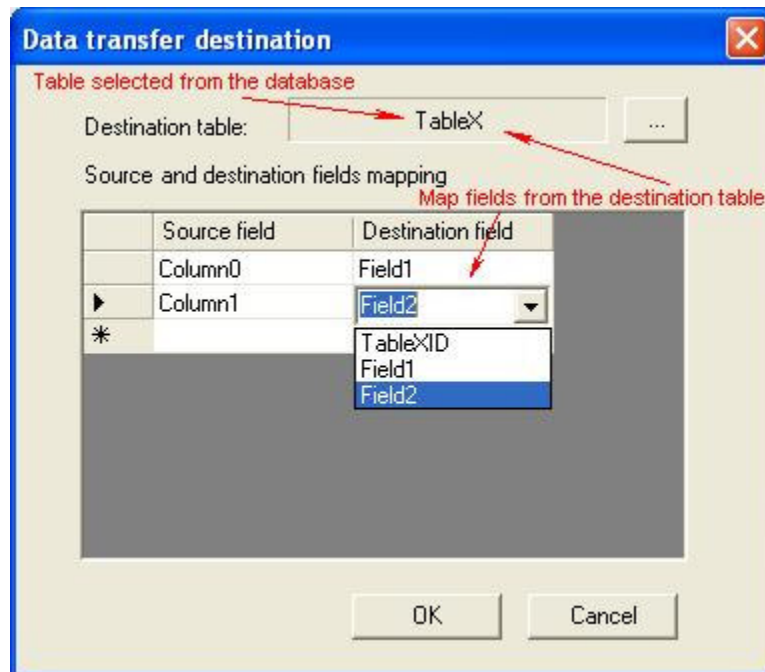
Set the Destination property of the DataTransfer:



Select DataQuery as the data destination type:

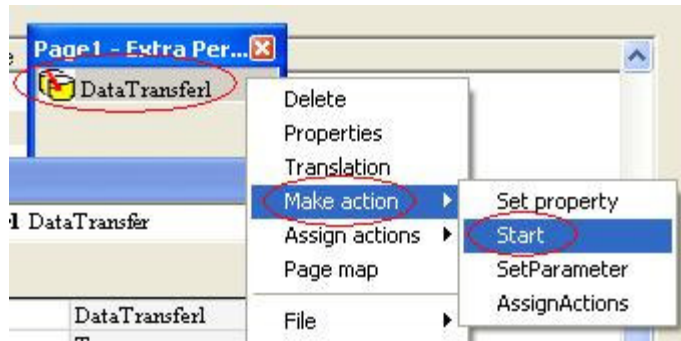


It will ask you to select the database and a table from the database as the destination. Once the destination table is selected, you may map the fields from the table to receive the data from the text file:



### 3. Create Data Transfer Action

Right-click on the DataTransfer performer, select “Make action”, select “Start”:



Give a name for the action to finish making the action.

Now run the application, select a text file with needed data, and execute the Start action. The data in the text file will be transferred into the destination table in the database.