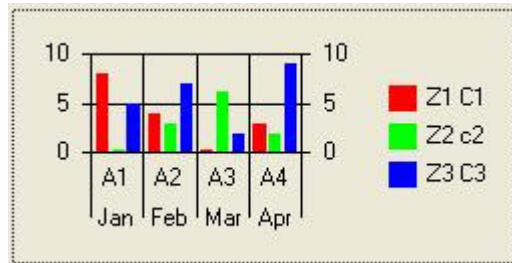


## User Guide – Chart



[Create a chart performer](#)

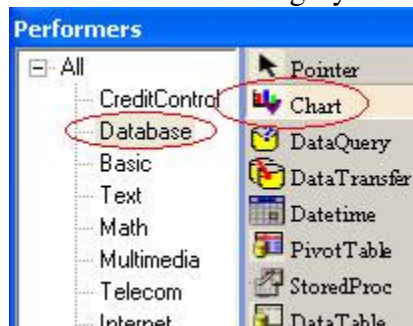
[Load data from a text file](#)

[Load data from database via Data Table](#)

[Load data from database via Data Query](#)

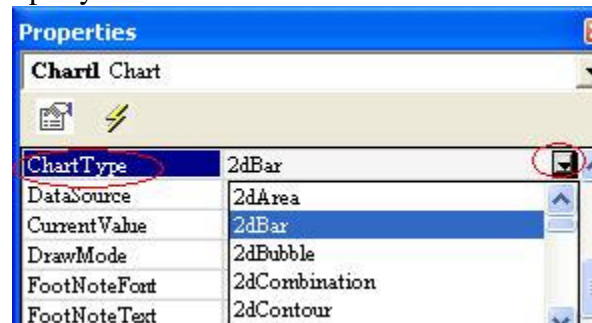
### Create a chart performer

You can find Chart performer under Database category:



Drop a chart performer on a page, and you are ready to use the chart.

Chart allows you to display data graphically. You can use 2D or 3D bars, lines, pies and other chart types to display data. Current version of the Chart performer supports 27 types of charts. To choose a type of chart, open the properties window for the chart and set its “ChartType” property:



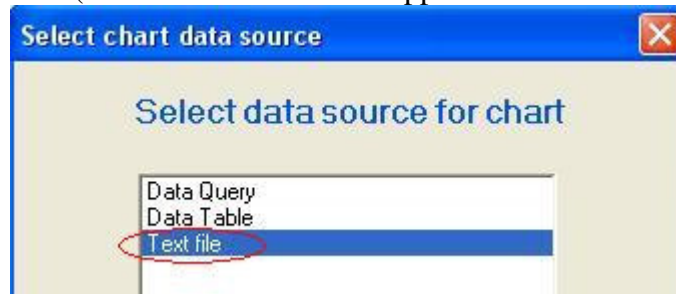
To load your data to the chart, set its “DataSource” property:



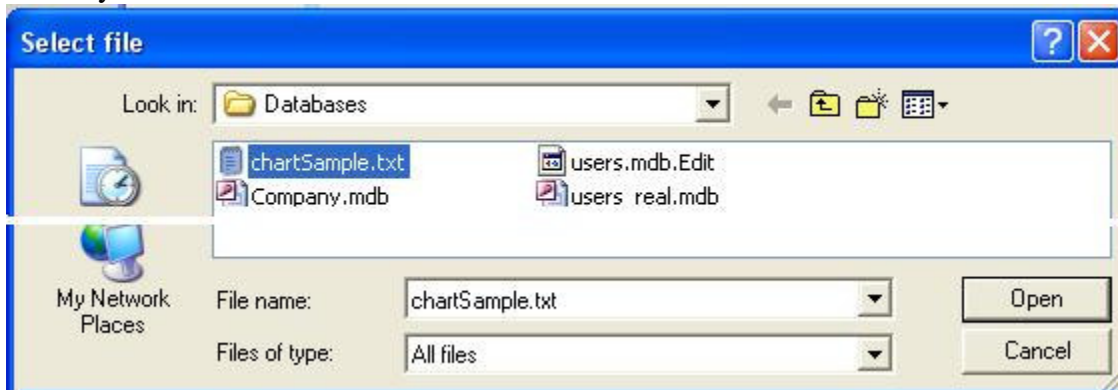
The chart performer allows you to load data from a text file, a Data Table performer or a Data Query performer.

### Load data from a text file

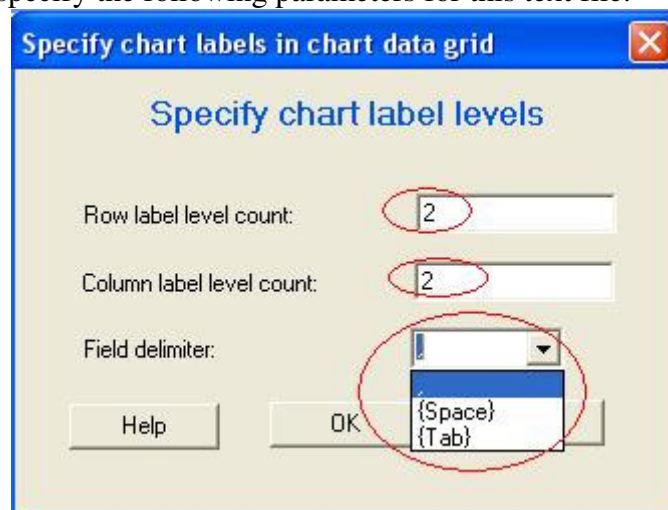
When you set “DataSource” property, it asks you to select a data source from all the supported data sources (the future version will support more and more data sources):



Choose “Text file”. It will ask you to select a text file. Browse the folders and select the text file you want to use:



It will ask you to specify the following parameters for this text file:

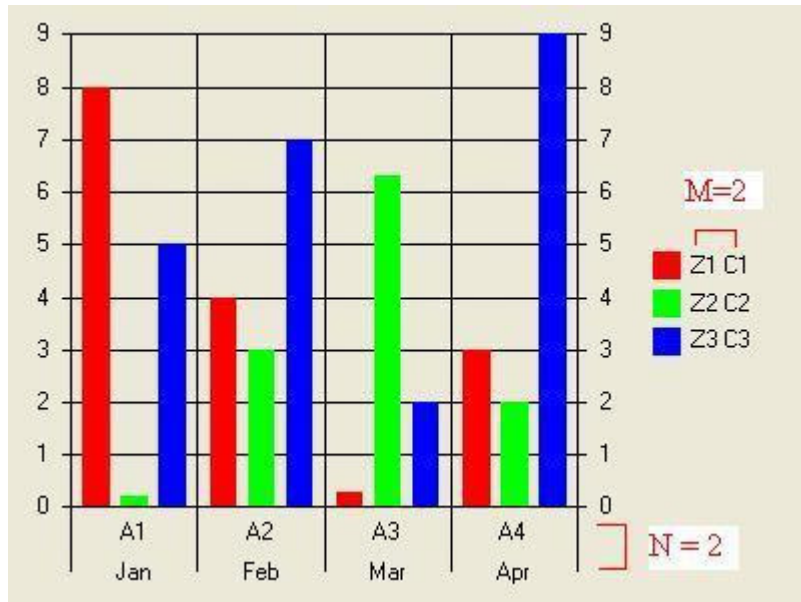


To explain the meanings of these parameters, we need to explain how data should be formatted and how data are used by the chart.

No matter where the data is loaded from, the data for a chart is formatted as a data grid. Following is a sample of chart data in a text file:

, , C1, C2, C3  
 , , Z1, Z2, Z3  
 Jan, A1, 8, 0.2, 5  
 Feb, A2, 4, 3, 7  
 Mar, A3, 0.3, 6.3, 2  
 Apr, A4, 3, 2, 9

In this sample data, the first 2 columns will be used as Row Labels, and thus Row Label Level count will be 2. The first 2 rows will be used as Column Labels, and thus the Column Label Level count will be 2. The following picture shows you what are Column Labels and Row Labels:



You can see where the Column Labels and Row Labels are displayed on the chart. In the picture, we use N to mark Row Label Level count, and use M to mark Column Label Level count.

In this text file, each piece of data is separated by a comma. So for Field delimiter, we set a comma for it. If you want to use a space to separate the data field, select {Space} in the drop-down list box. If you want to use a tab to separate the data field, select {Tab} in the drop-down list box.

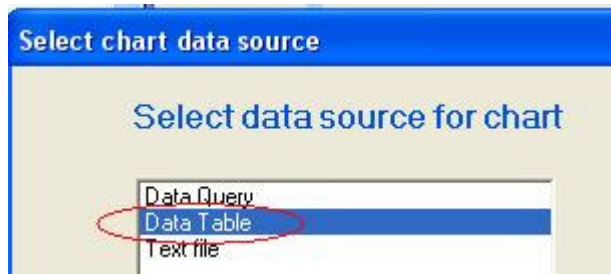
### Load data from database via Data Table

Suppose you already have a Data Table performer on a page. You can show the data in the Data Table with a chart performer.

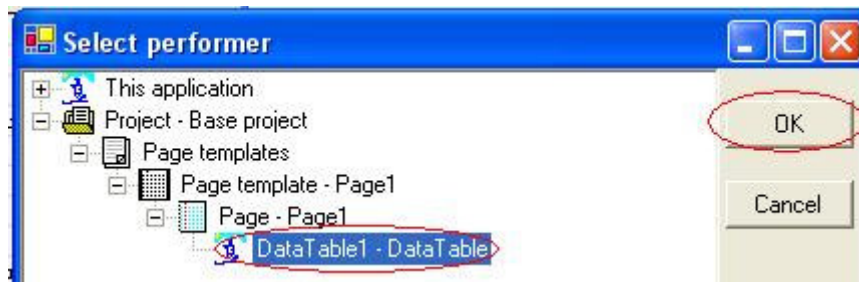
There are lots of articles regarding the use of the Data Table performer. We will not do into how to use Data Table performer. Suppose we already have a Data Table performer showing the following data from a database:

DataT able1					
	Month	Year	Dept1	Dept2	Dept3
▶	Jan	1998	8	0.2	5
	Feb	1998	4	3	7
	Mar	1998	0.3	6.3	2
	Apr	1998	3	2	9

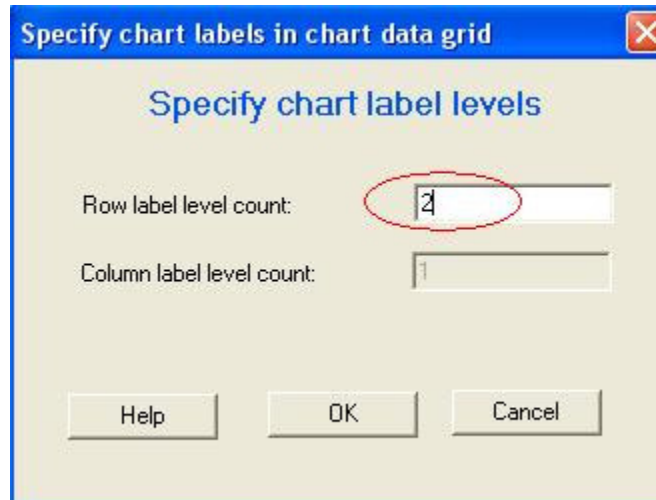
To show these data with a chart, set “DataSource” property of the chart performer to Data Table:



It then will ask you to select a Data Table performer. Select the Data Table performer we want to use:

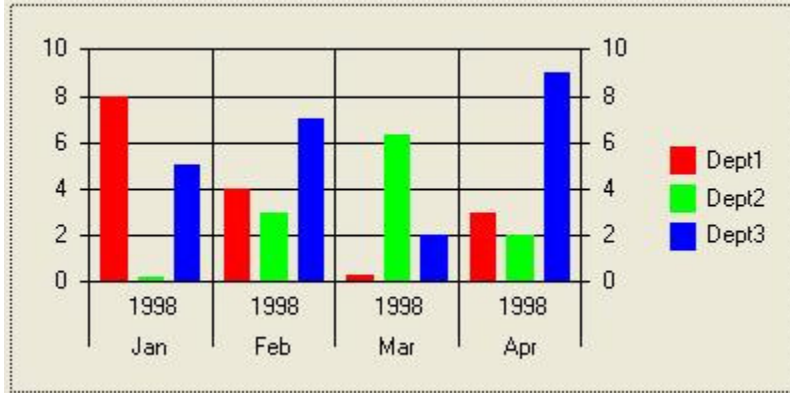


It then asks for the row label level count:



Because we want to use both Month and Year fields to be the row labels, we set Row label level count to 2. Note that Column label level count will always be 1. It will just use the field names as the column labels.

Click OK button, the data is shown in the following chart:

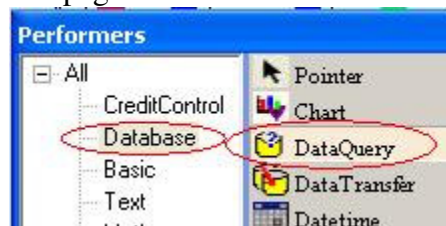


### Load data from database via Data Query

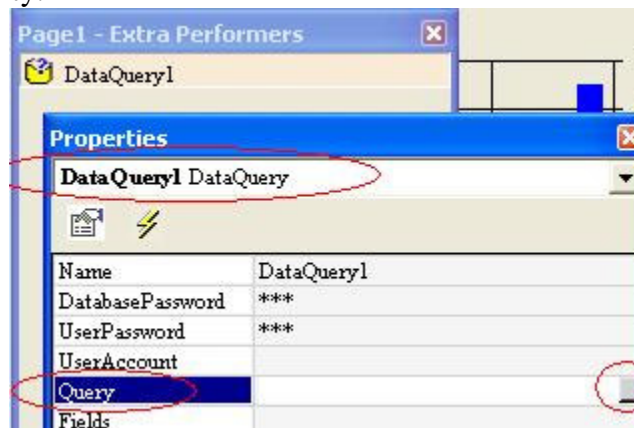
In the previous example, you have a Data Table and show the data in the Data Table in a chart. In many situations, you do not want to show data in a Data Table. You just want to show data in chart. You may use Data Query performer in the place of Data Table.

Data Query performer is designed to provide data from a database, but without visually display the data. It is designed to be a data source for other performers.

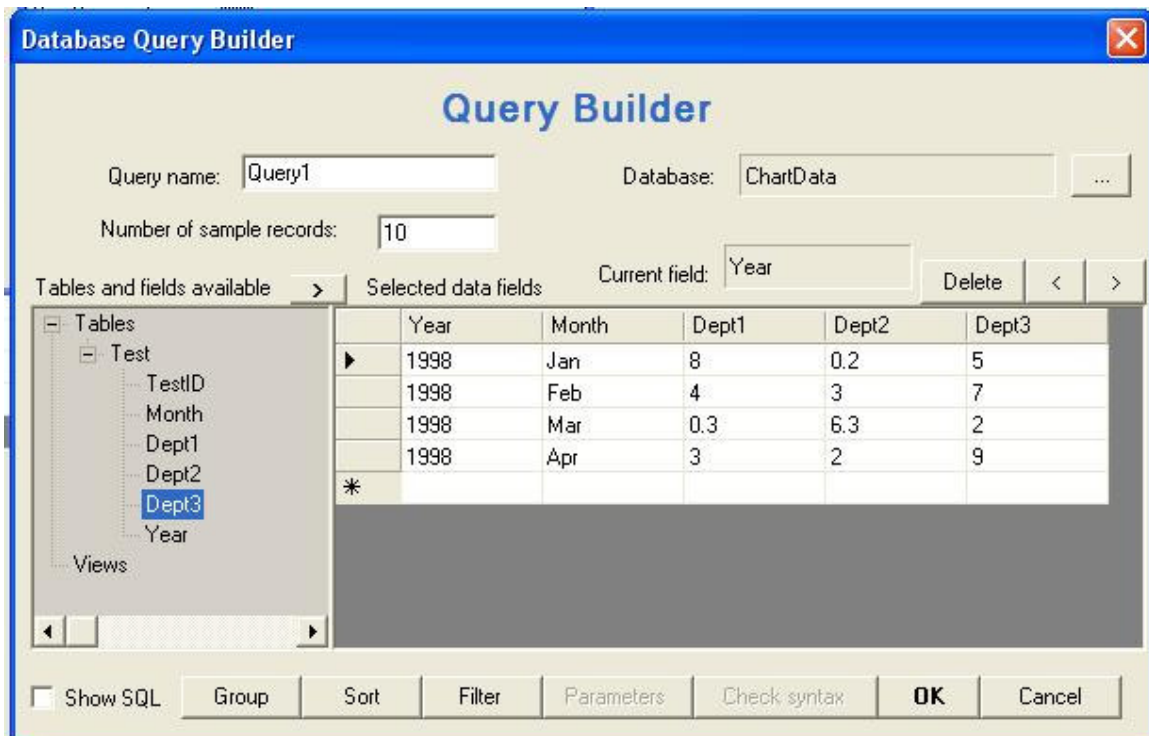
To use Data Query, drop it to a page:



Set its Query property:

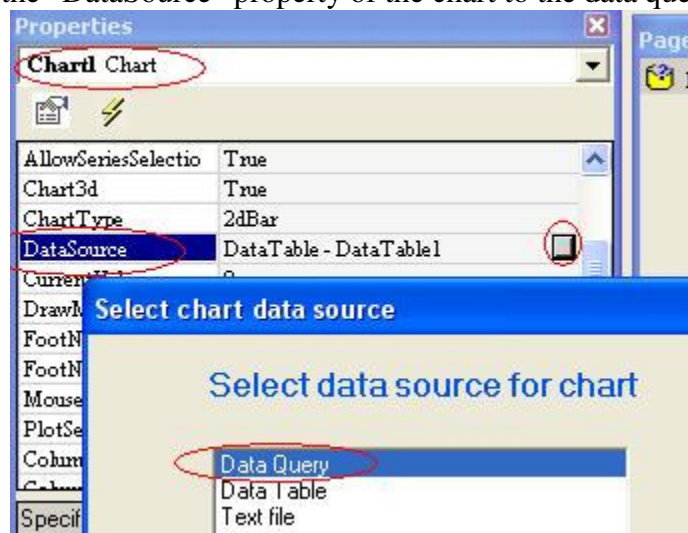


Make a query to return the data we want from the database:

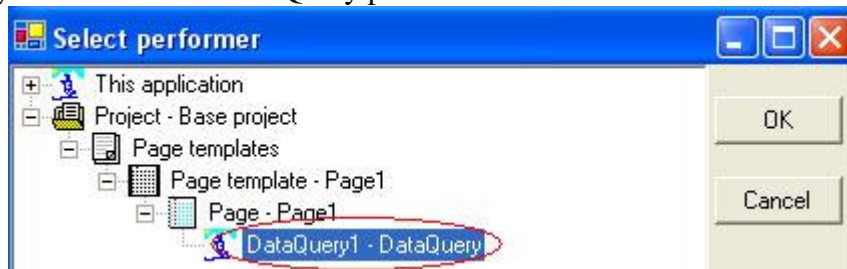


Click OK button to finish making the query. For more information on adding database to your application and using the query builder, please see Lesson 9 of the tutorial.

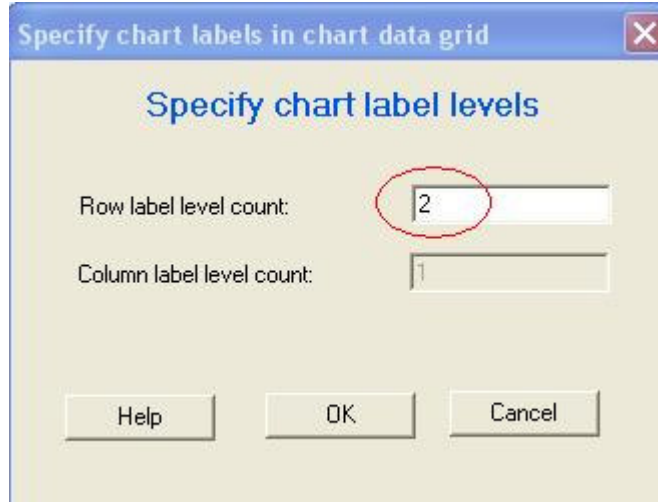
Now we may set the “DataSource” property of the chart to the data query:



It will ask you to select the Data Query performer to be used:



And then it asks you to specify the row label level count. Set it to 2 because we want to Year and Month fields to be the row levels:



A dialog box titled "Specify chart labels in chart data grid" with a close button (X) in the top right corner. The main title is "Specify chart label levels". It contains two input fields: "Row label level count:" with the value "2" (circled in red) and "Column label level count:" with the value "1". At the bottom are three buttons: "Help", "OK", and "Cancel".

And we have the chart:

