

# How Connect to MS Access

---

## Contents

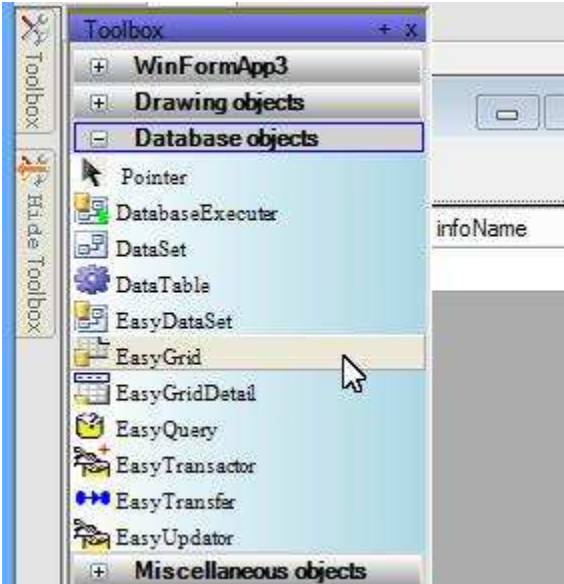
- Use 32-bit Projects ..... 1
- Use OLE DB..... 2
- Use Database ..... 6

## Use 32-bit Projects

The drivers for Microsoft Access are for 32-bit platforms. So, the first step in using Microsoft Access in your projects is to make your projects 32-bit. See [http://www.limnor.com/studio\\_x86.html](http://www.limnor.com/studio_x86.html) for how to make your project 32-bit.

Once you made your project 32-bit, you may use an available database driver, for example, OLE DB, to connect to your Microsoft Access database.

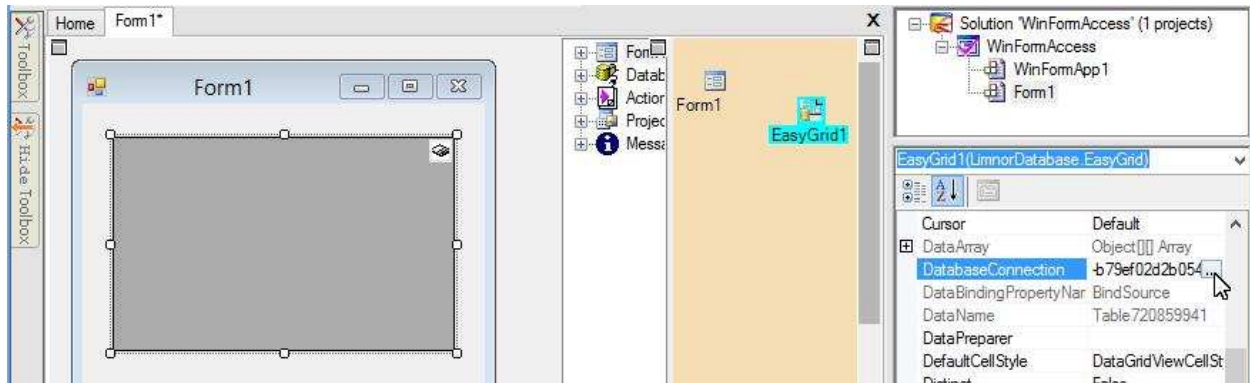
Most of commonly used database components are EasyGrid, EasyGridDetail, EasyDataSet, EasyUpdater, and DatabaseExecutor. They all have a DatabaseConnection property for establishing connection to your databases.



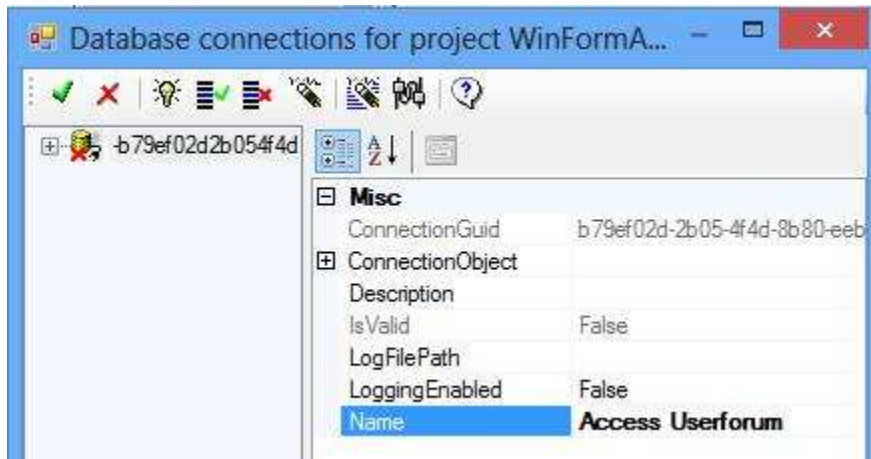
Below we will describe how to use OLE DB to connect to an Access database.

## Use OLE DB

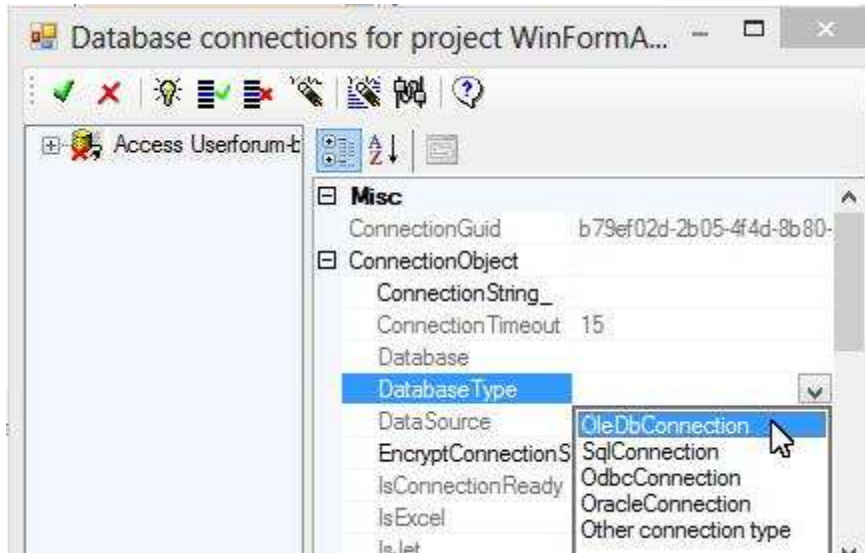
To change database connection, set DatabaseConnection property:



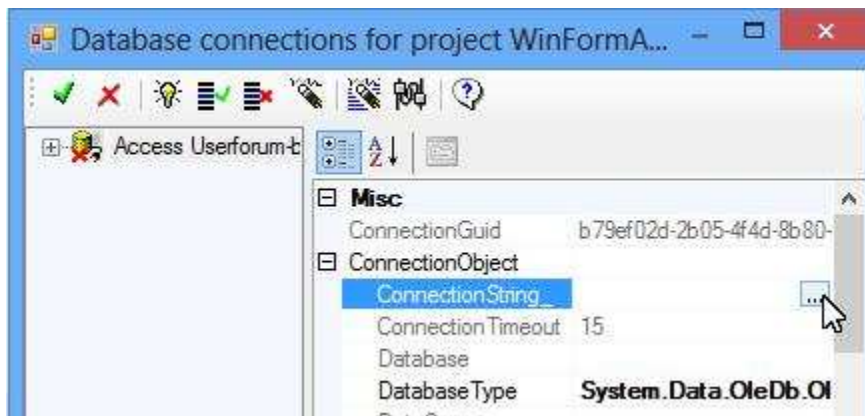
Note that each database connection can be reused across all projects. To make it easier to reuse a database connection, you may give a name to a new database connection:



DatabaseType property specifies which database driver we want to use. Suppose we want to use OLE DB driver, we may select OleDbConnection:



Once we specified DatabaseType, we need to set the connection string to specify the database we want to use:



For samples of connection string for using OLE DB on MS Access, you may search on internet. For example, <http://www.connectionstrings.com/access>. To make it easier to construct the connection string, Limnor Studio provides a dialogue box. You enter your database and optionally passwords. Click Test to see if the information is correct:



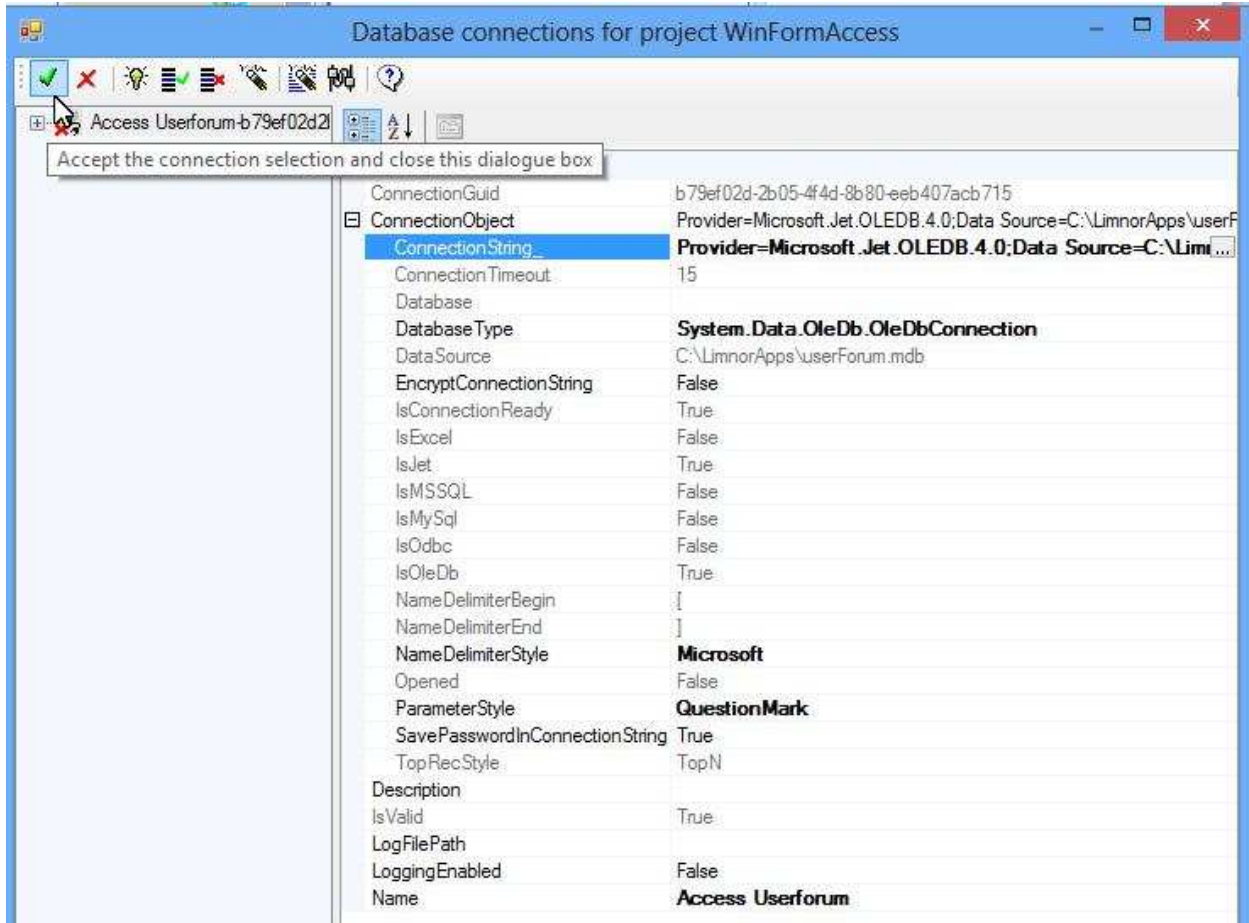
If the information is correct then a message box appears saying it is OK:



You may click OK to use it:

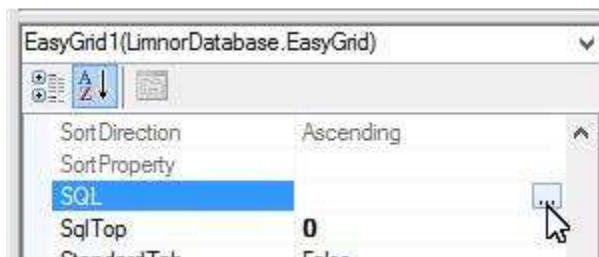


Click the green check button to finish creating the database connection. Note that this database connection can be used in all your projects. If you modify it then the modifications affect all projects using it.

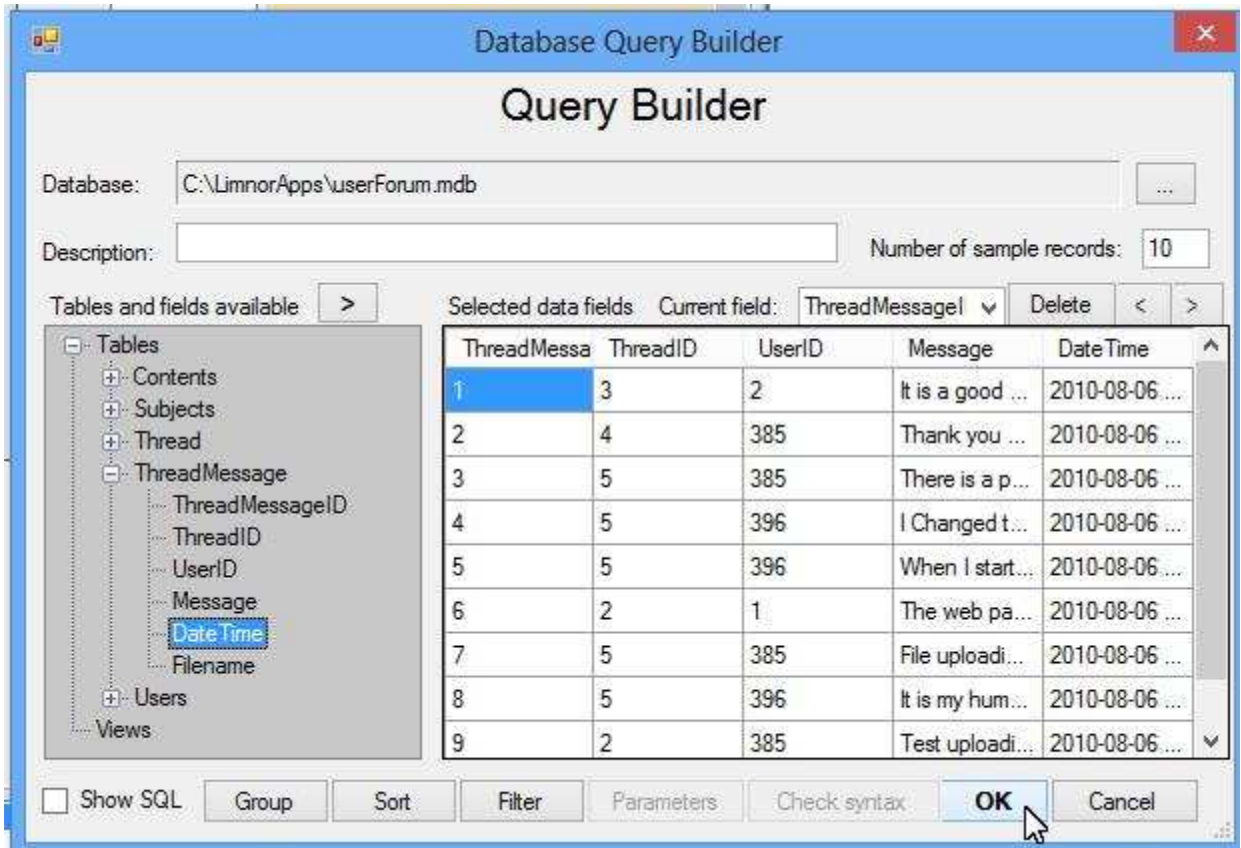


## Use Database

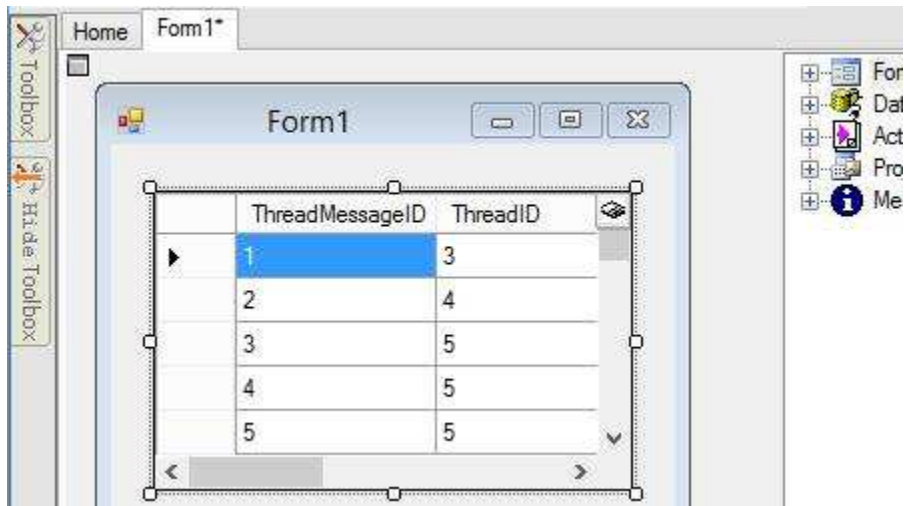
Once a database connection is specified, you may set properties such as SQL or ExecuteCommand to use the database components. For example, if we want to use an EasyGrid to get data in a table then we may set its SQL property:



We may use the query builder to get the data we want:



The data appear in the form:



For more information, see <http://www.limnor.com/support/Limnor%20Studio%20-%20User%20Guide%20-%20Part%20VI.pdf>