

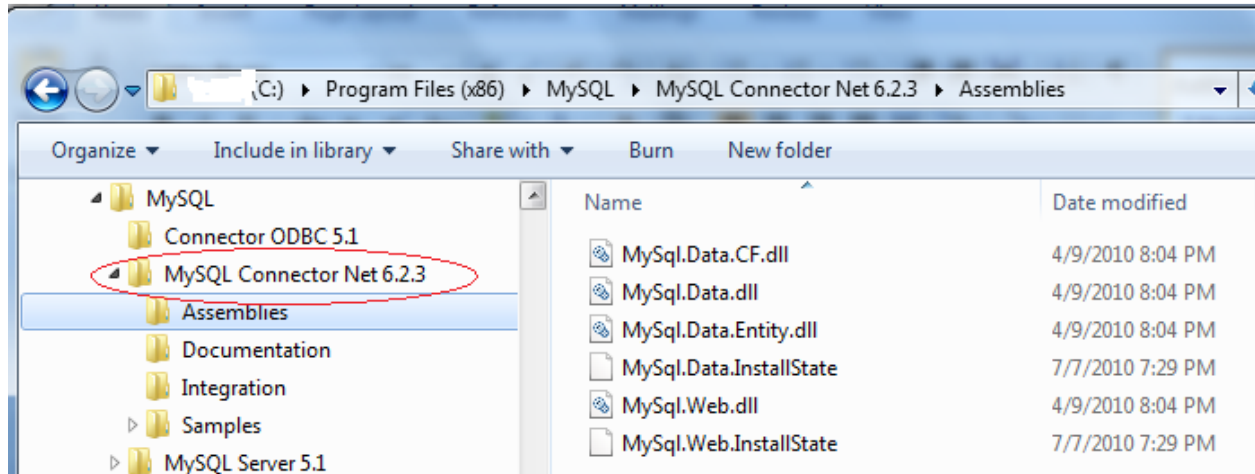
Connect To MySQL Using ADO.Net Driver

ADO.NET driver for MySQL

Programs may connect to MySQL databases via ADO.Net drivers.

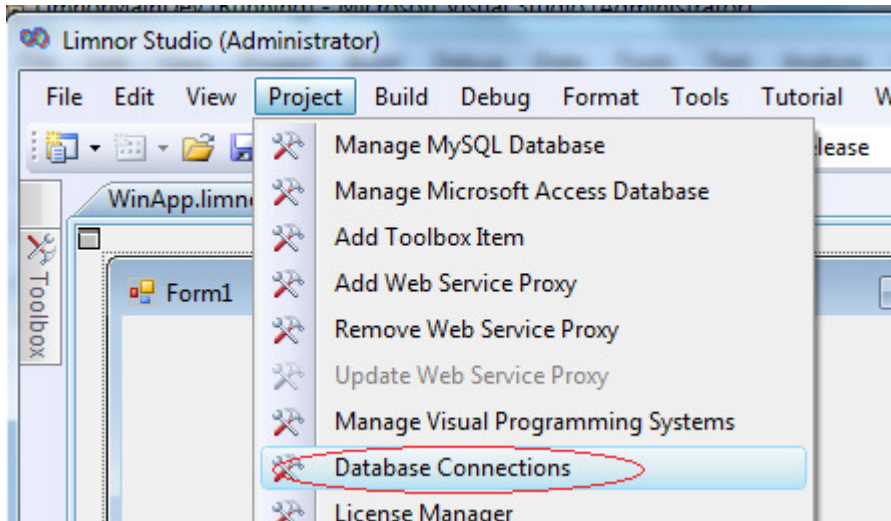
One ADO.NET driver for MySQL is Connector/Net. It can be downloaded from <http://dev.mysql.com/downloads/connector/net/>.

Run mysql.data.msi to install the driver.

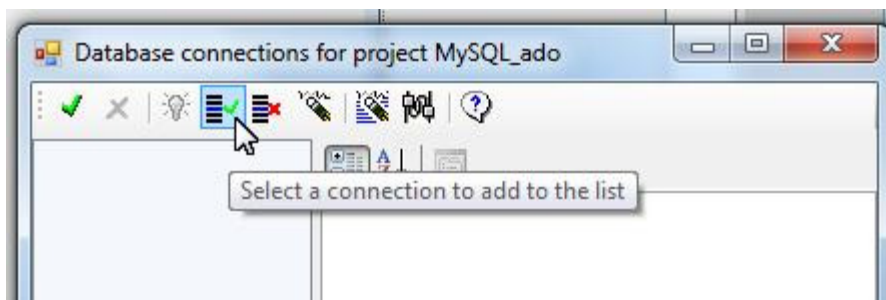


Use MySQL ADO.Net Driver

To add a MySQL connection to the project, choose menu "Database Connections"



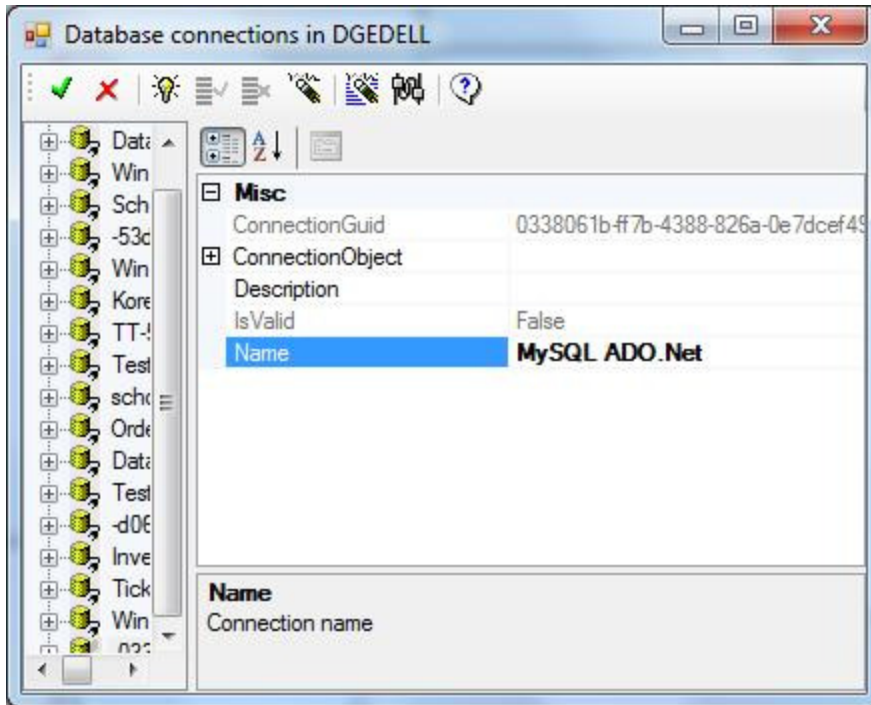
Select a connection to add to this project:



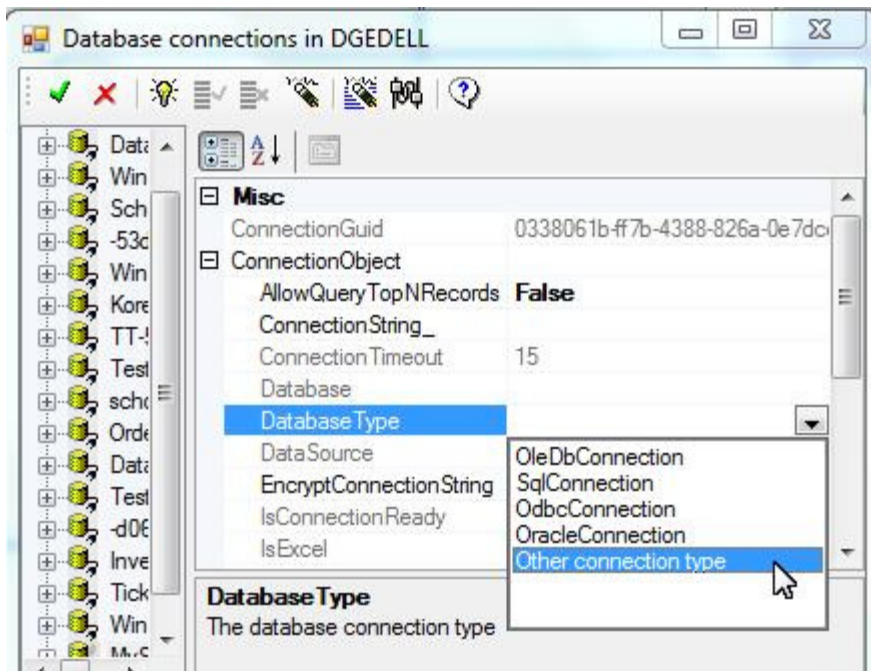
Create a new database connection:



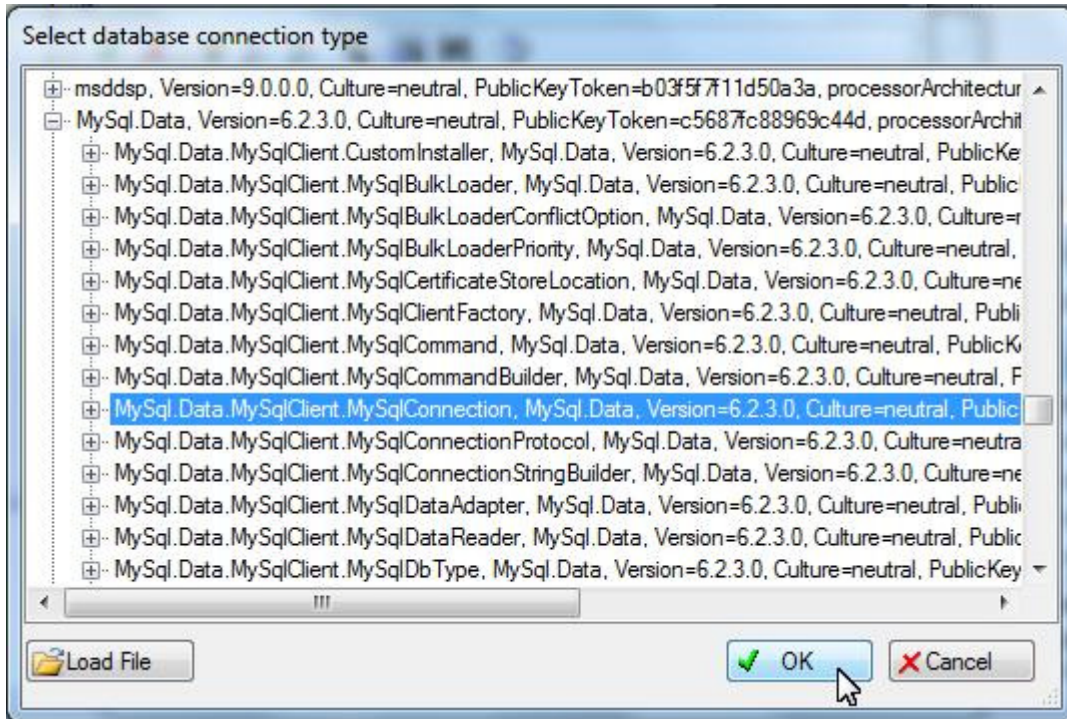
Give the new database connection a name:



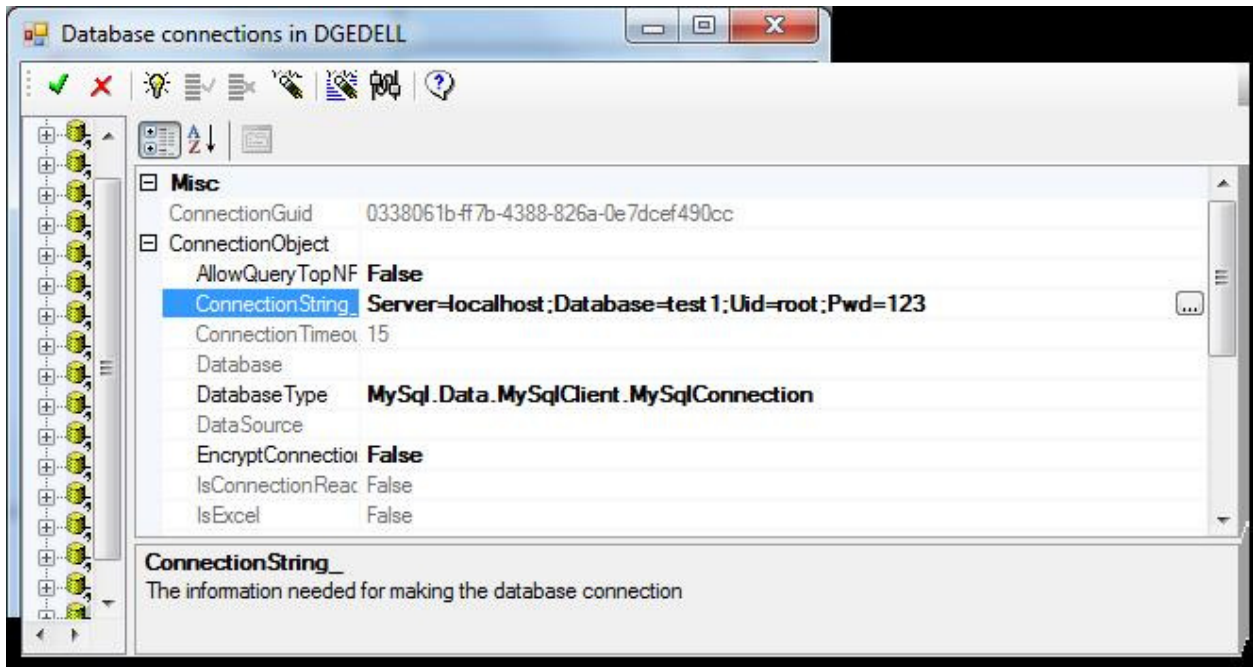
Choose "Other connection type" for the DatabaseType property:




Choose "MySql.MySqlClient.MySqlConnection". Click OK:



Set the `ConnectionString_` property:

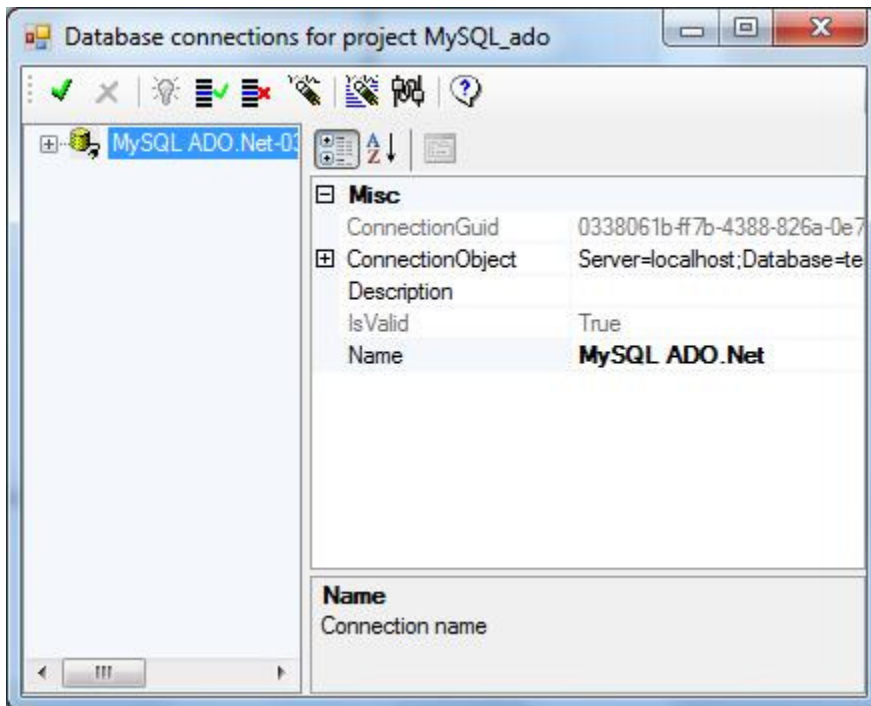



For more information on how to make a connection string, see http://dev.mysql.com/tech-resources/articles/ebonat-connection-string-vb-net.html#_Toc159381181

Click  to test the connection:



Click . This new database connection is in the list for this project:

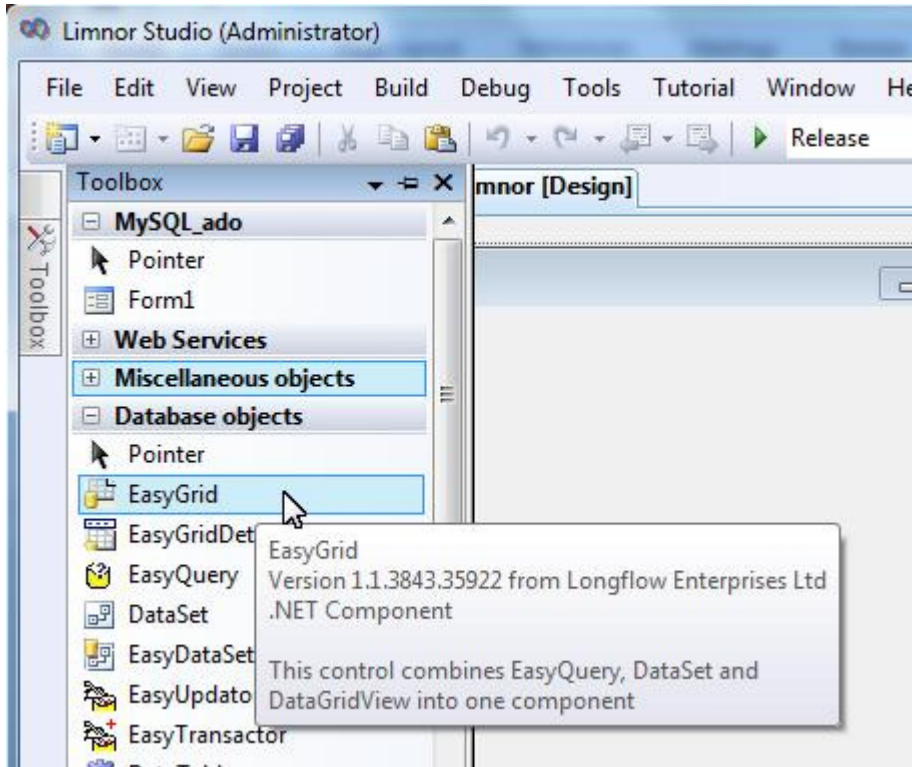


Click  to finish creating database connections for this project.

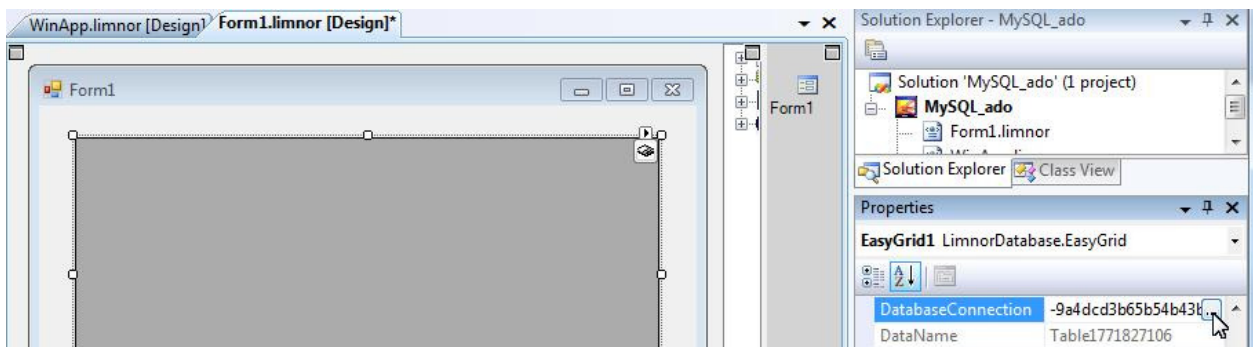
Use Data from MySQL Database

Once we have the connection to the MySQL database, we may use data from it. Basically there is not a difference between using data from other types of databases.

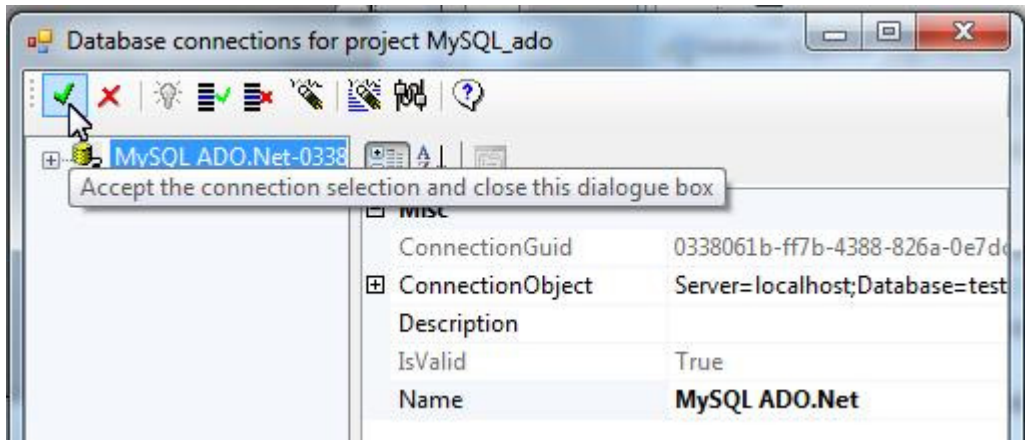
For example, we may use EasyGrid to display data:



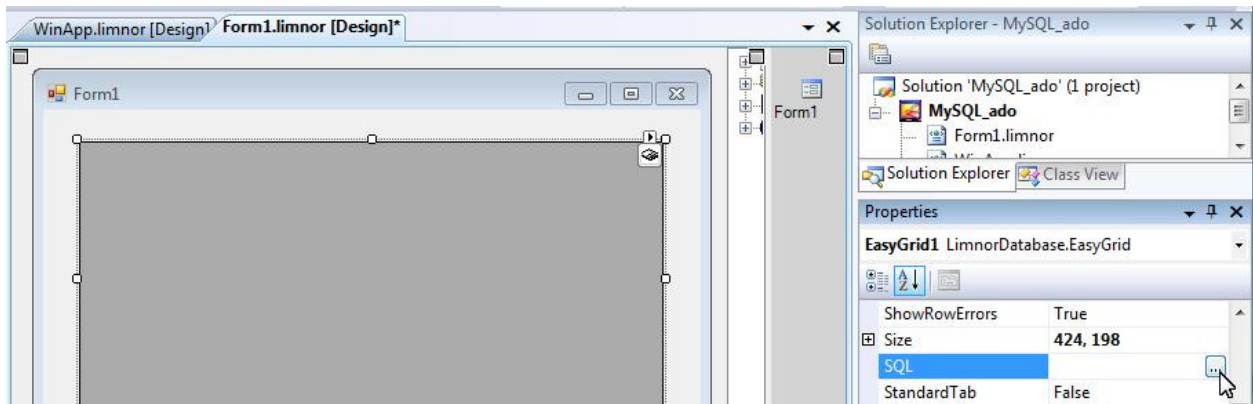
Set its DatabaseConnection property:



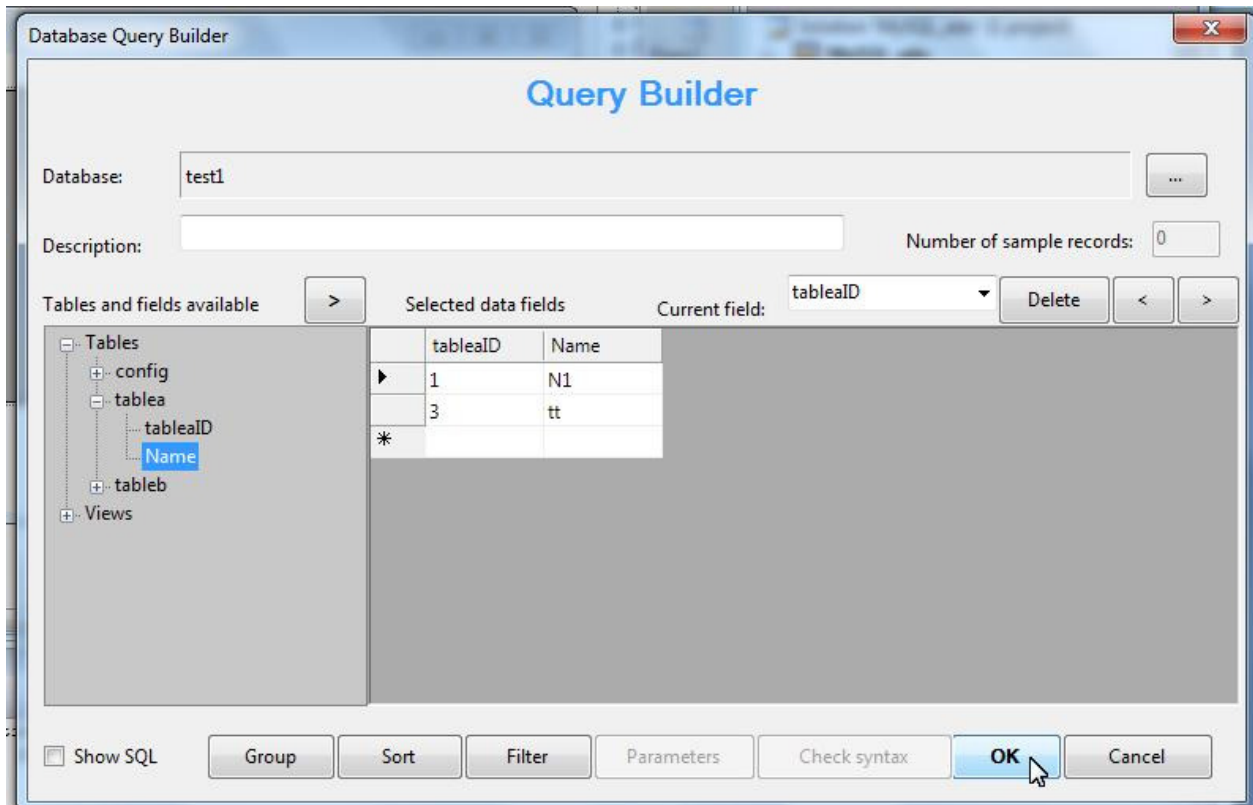
Select the MySql connection:



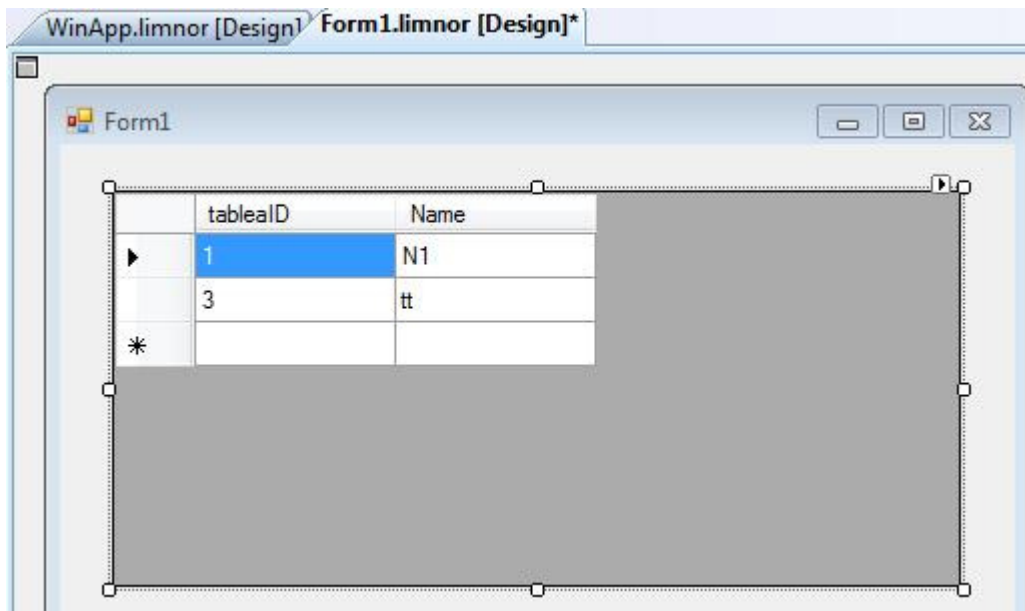
Set its SQL property:



Construct the query to get the data we want:



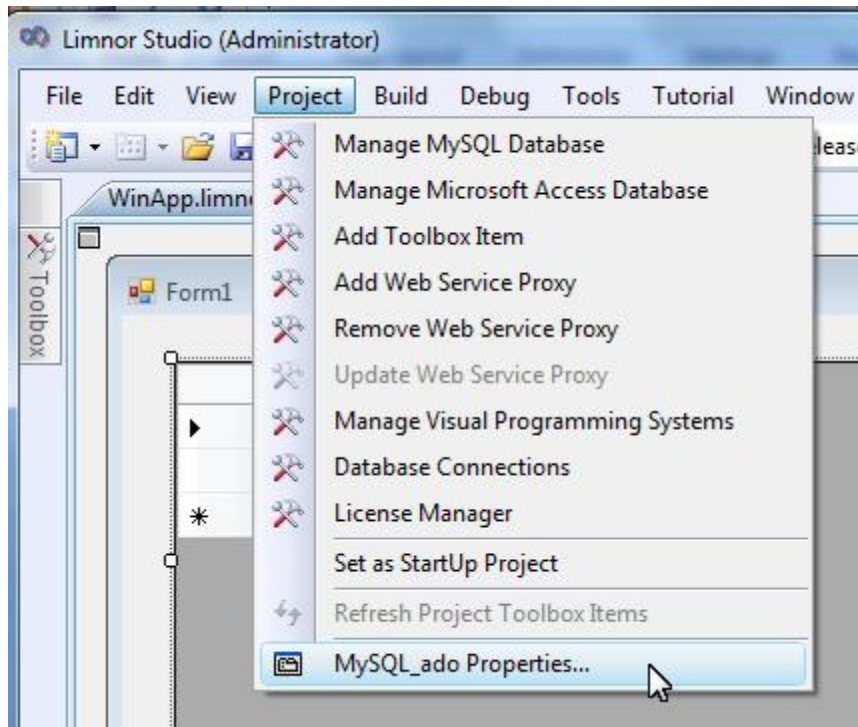
The data appear in the grid:



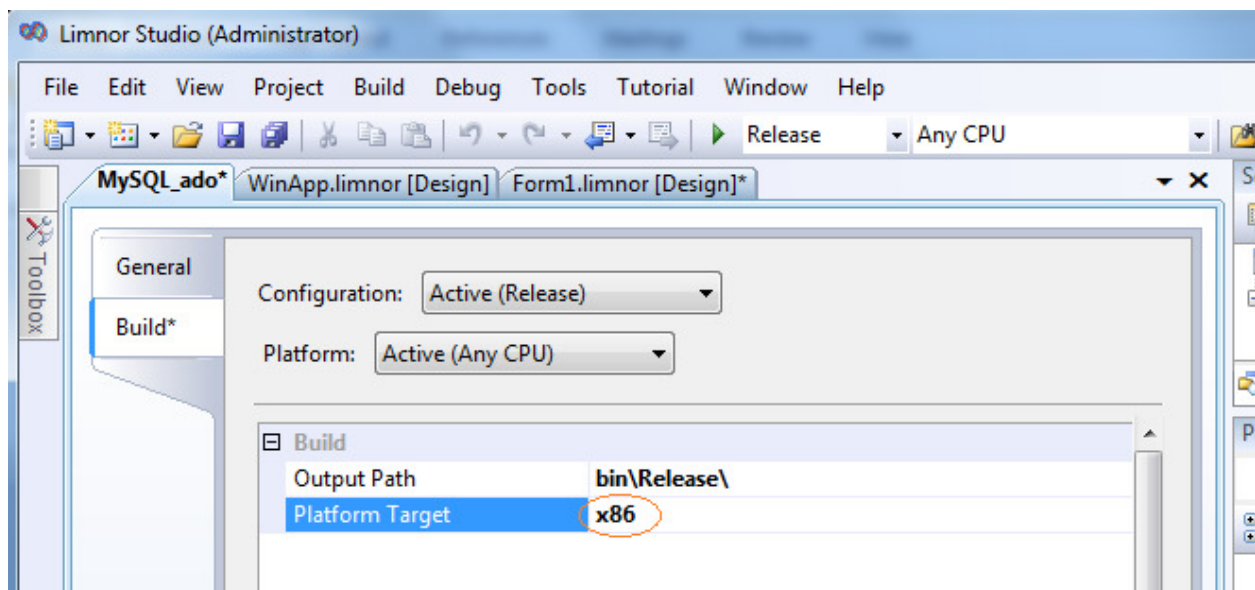
Compile Project into 32-bit Software

Note that Connector/Net is a 32-bit program. Our programs using it must be compiled into 32-bit.

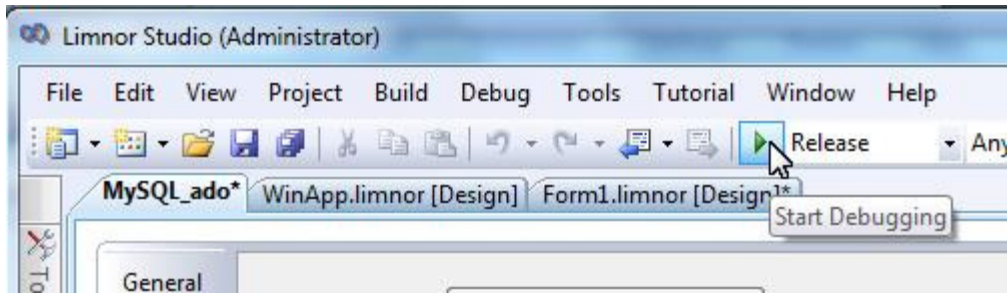
Open project properties:



Select Build. Set "Platform Target" to x86:



Now we may test the program:



The application runs. The data from the MySQL database are displayed in the grid.

