

Limnor Studio Profiling

Contents

Introduction	1
Enable Profiling	1
Read log file.....	2
Clear log contents	3

Introduction

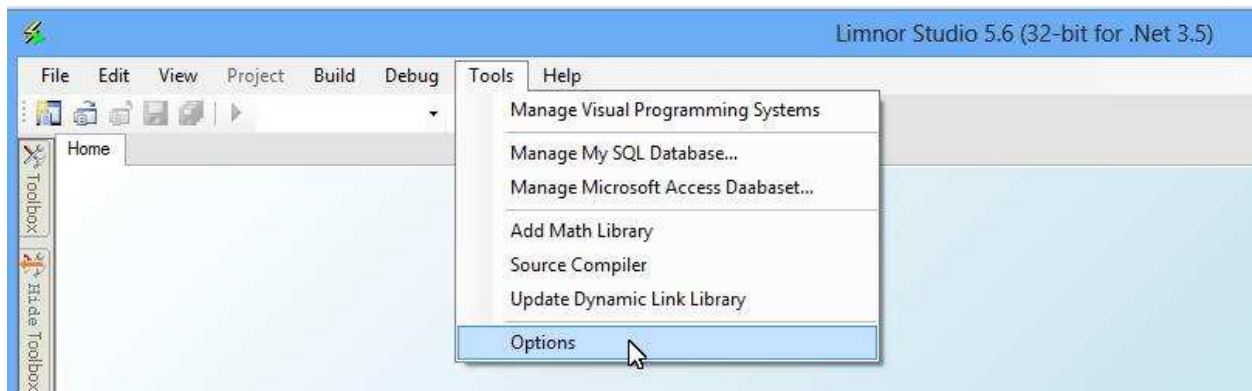
In the process of visual and codeless programming, Limnor Studio needs to pull lots of information in responding to your programming activities. It may take too much time if Limnor Studio's operations are not fully optimized.

To help optimize Limnor Studio, please notify support@limnor.com if Limnor Studio is taking too much time in your situations.

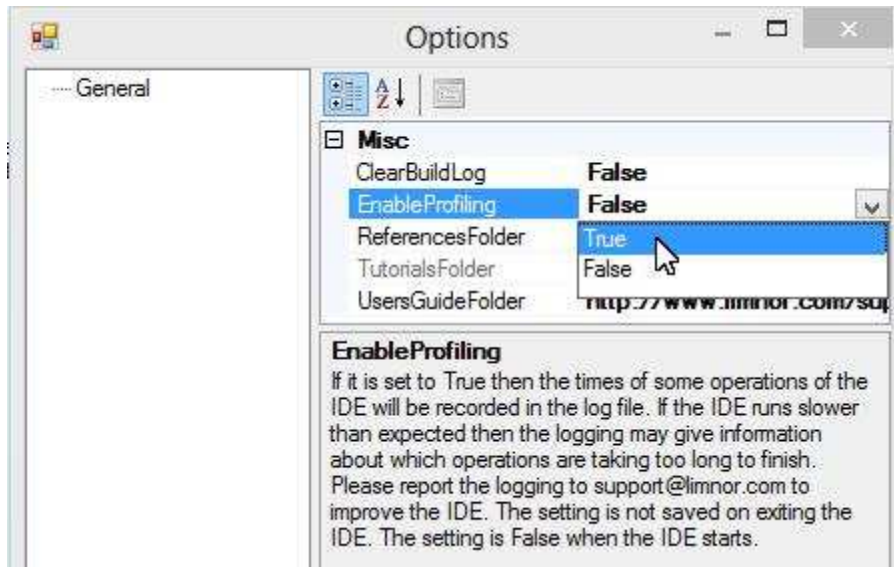
Some instrumentation code is inserted in Limnor Studio 5.6. It will log some operation times so that we may see which operations are taking too much time to complete.

Enable Profiling

To enable Limnor Studio profiling, choose menu Tools and then Options:



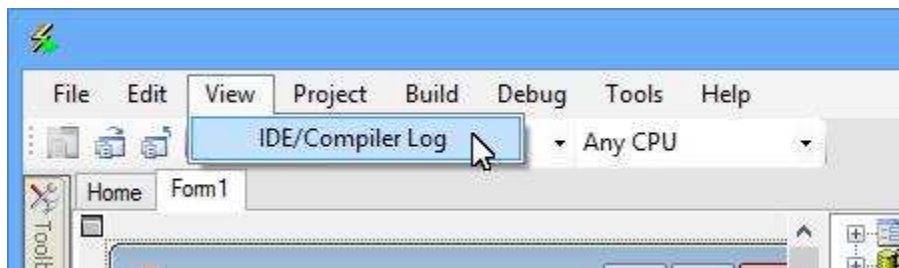
Set EnableProfiling to True or False to enable or disable operation time logging



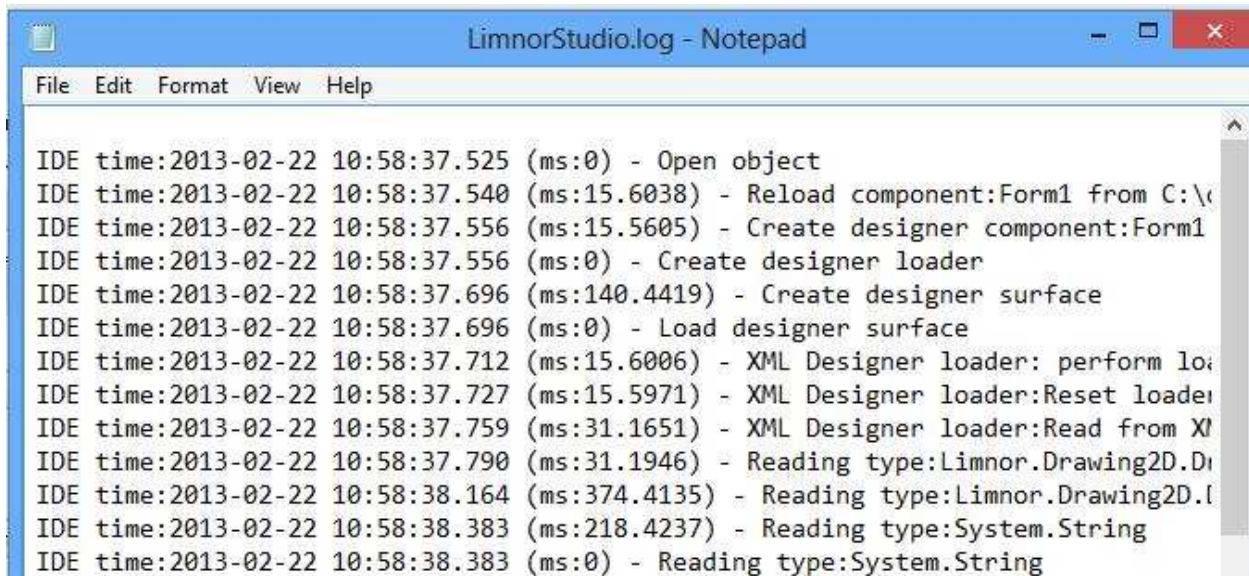
Note that this setting is not persisted in your computer. Every time you re-start Limnor Studio, this setting is False.

Read log file

Choose menu View and IDE/Compiler Log to view the logging:



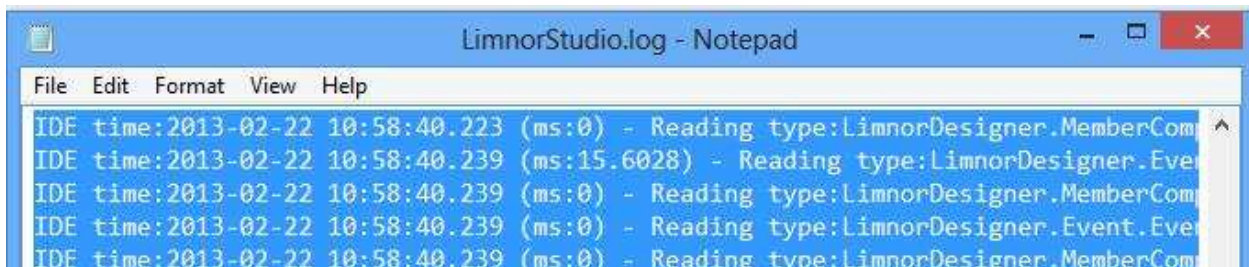
A Notepad instance is opened to show the log file contents:



```
LimnorStudio.log - Notepad
File Edit Format View Help
IDE time:2013-02-22 10:58:37.525 (ms:0) - Open object
IDE time:2013-02-22 10:58:37.540 (ms:15.6038) - Reload component:Form1 from C:\c
IDE time:2013-02-22 10:58:37.556 (ms:15.5605) - Create designer component:Form1
IDE time:2013-02-22 10:58:37.556 (ms:0) - Create designer loader
IDE time:2013-02-22 10:58:37.696 (ms:140.4419) - Create designer surface
IDE time:2013-02-22 10:58:37.696 (ms:0) - Load designer surface
IDE time:2013-02-22 10:58:37.712 (ms:15.6006) - XML Designer loader: perform lo
IDE time:2013-02-22 10:58:37.727 (ms:15.5971) - XML Designer loader:Reset loader
IDE time:2013-02-22 10:58:37.759 (ms:31.1651) - XML Designer loader:Read from X
IDE time:2013-02-22 10:58:37.790 (ms:31.1946) - Reading type:Limnor.Drawing2D.D
IDE time:2013-02-22 10:58:38.164 (ms:374.4135) - Reading type:Limnor.Drawing2D.l
IDE time:2013-02-22 10:58:38.383 (ms:218.4237) - Reading type:System.String
IDE time:2013-02-22 10:58:38.383 (ms:0) - Reading type:System.String
```

Clear log contents

All loggings will append to the log file, making the file larger and larger. After enabling logging, if you do not need old loggings then you may choose menu View and IDE/Compiler Log to open the log file, press CTRL-A to select all the contents, press DELETE key to clear the contents and save the file:



```
LimnorStudio.log - Notepad
File Edit Format View Help
IDE time:2013-02-22 10:58:40.223 (ms:0) - Reading type:LimnorDesigner.MemberCom
IDE time:2013-02-22 10:58:40.239 (ms:15.6028) - Reading type:LimnorDesigner.Event
IDE time:2013-02-22 10:58:40.239 (ms:0) - Reading type:LimnorDesigner.MemberCom
IDE time:2013-02-22 10:58:40.239 (ms:0) - Reading type:LimnorDesigner.Event.Event
IDE time:2013-02-22 10:58:40.239 (ms:0) - Reading type:LimnorDesigner.MemberCom
```

