

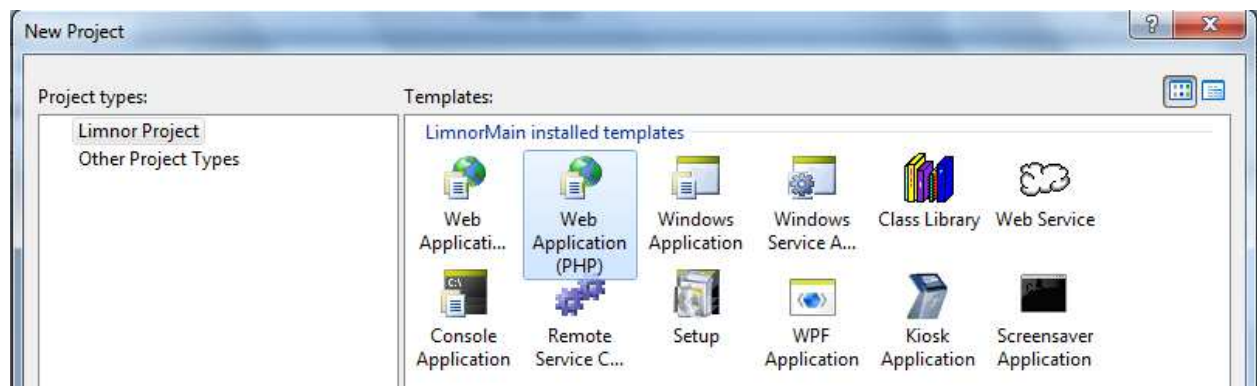
Project Types

Contents

Introduction	1
Windows Application	2
Windows Service	2
Class Library	3
Web Service	3
Console Application	3
Setup	3
Kiosk Application	3
Screensaver Application	4
Web Application	4
ASPX	4
PHP	4
Web Development Documents	4
Remote Service Console Application	5

Introduction

A project template has to be selected for creating a new software development project in Limnor Studio:



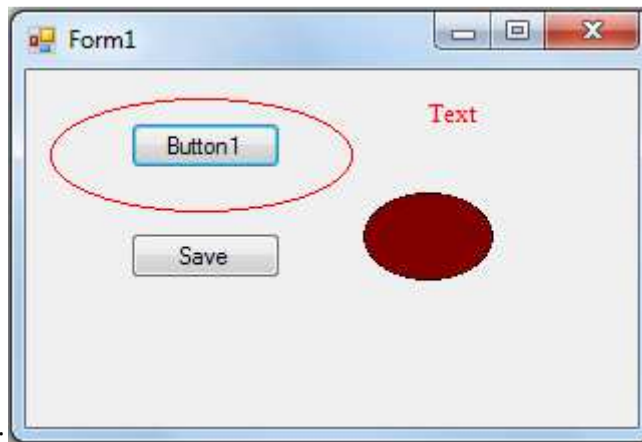
This document briefly describes each project type and gives related documents.

Project types supported by Limnor Studio

Windows Application



A project of this type compiles into an executable file (*.EXE). The project uses Forms to build graphic user interface.



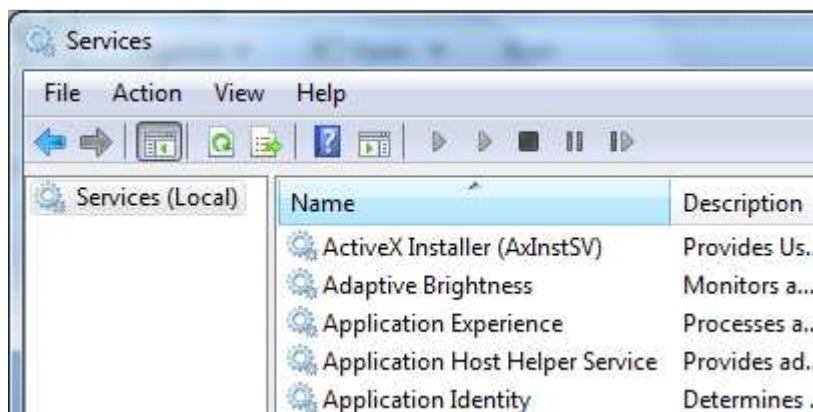
A sample form:

See <http://www.limnor.com/support/UseDefaultFormInstance.pdf>

Windows Service



A project of this type compiles into an executable file (*.EXE). The executable is a Windows Service. The compiler also generates service installation and un-installation commands. Once installed, the compiled program will appear as a service among the list of services:



See Programming Samples web page in <http://www.limnor.com> for samples of creating Windows services.

For debugging Windows service, see

<http://www.limnor.com/support/Debug%20Windows%20Service.pdf>

Project types supported by Limnor Studio

Class Library



A project of this type compiles into a software library (*.DLL). The library can be used directly by all other programming languages and programming systems which support Microsoft .Net Framework.

Web Service



A project of this type compiles into a web service. The web service files should be copied to a web server and called by computers connected via the internet.

See Cloud Computing Samples in the Programming Samples web page in <http://www.limnor.com>

Console Application



A project of this type compiles into an executable file (*.EXE). The executable runs in a console window.

Setup



A project of this type compiles into a Windows Installer file (*.msi). It is included in a solution with other projects for generating an installer to distribute the projects in the solution.

See <http://www.limnor.com/support/Limnor%20Studio%20-%20User%20Guide%20-%20Installer.pdf>

Kiosk Application



A project of this type compiles into an executable file (*.EXE). The project provides a background window to cover the desktop.

Usually a kiosk application does not provide a menu or command for exiting the application. To exit the kiosk application the user may press the hot key defined by the ExitHotKey property. It will ask the user for the Exit Code. The Exit Code the user enters must match the ExitCode property in order to shut down the kiosk application.

For developing and setting up a kiosk computer, see <http://www.limnor.com/support/KioskApplications.pdf>.

Project types supported by Limnor Studio

Screensaver Application



A project of this type compiles into an executable (*.SCR).

It is recommended to add a Setup project (see Setup section above) to the solution for generating an installer to distribute the screensaver.

See <http://www.limnor.com/support/Limnor%20Studio%20-%20User%20Guide%20-%20ScreenSaver.pdf>

Web Application

ASPX



A project of this type compiles into a web site application. The server side is using Microsoft .Net Framework and ASPX is used for client server connection.

PHP



A project of this type compiles into a web site application. The server side is using PHP. The web site can be deployed to a LAMP (Linux Apache MySQL Php) server.

Web Development Documents

<http://www.limnor.com/support/WebApplicationDevelopment.pdf>

<http://www.limnor.com/support/webDatabaseProgramming.pdf>

<http://www.limnor.com/support/WebDataRepeater.pdf>

<http://www.limnor.com/support/UsePhpCode.pdf>

<http://www.limnor.com/support/WebFileupload.pdf>

<http://www.limnor.com/support/WebEmail.pdf>

<http://www.limnor.com/support/WebTreeView.pdf>

<http://www.limnor.com/support/UseJavaScriptFiles.pdf>

<http://www.limnor.com/support/WebMenu.pdf>

<http://www.limnor.com/support/WebDialogAndChildPage.pdf>

<http://www.limnor.com/support/WebDateTime.pdf>

Project types supported by Limnor Studio

<http://www.limnor.com/support/HowToUseLargePageSizeAtDesignTime.pdf>

<http://www.limnor.com/support/WebImageDataBinding.pdf>

<http://www.limnor.com/support/WebEventBubbling.pdf>

<http://www.limnor.com/support/HandleLargeNumberOfWebElements.pdf>

<http://www.limnor.com/support/MultipleWebPageLogins.pdf>

<http://www.limnor.com/support/WebCamInWebPage.pdf>

<http://www.limnor.com/support/GoogleMaps.pdf>

<http://www.limnor.com/support/GoogleMapsControl.pdf>

Remote Service Console Application



A project of this type compiles into an executable file (*.EXE). It runs as a console application. When it runs, it waits there to provide remote services for client applications. The client applications may call the remote services from other networked computers.

For more details on creating networking applications, see <http://www.limnor.com/support/remoting.pdf>