

How to search in EasyGrid

Contents

Search Method.....	1
Use Search Action in a Method.....	1
Create a method.....	1
Execute method	11

Search Method

The “Search” method of an EasyGrid is for locating a record by search criteria. The found record becomes the current record of the grid. Once the desired record becomes the current record you may do things on the current record. For example, get field values; change field values.

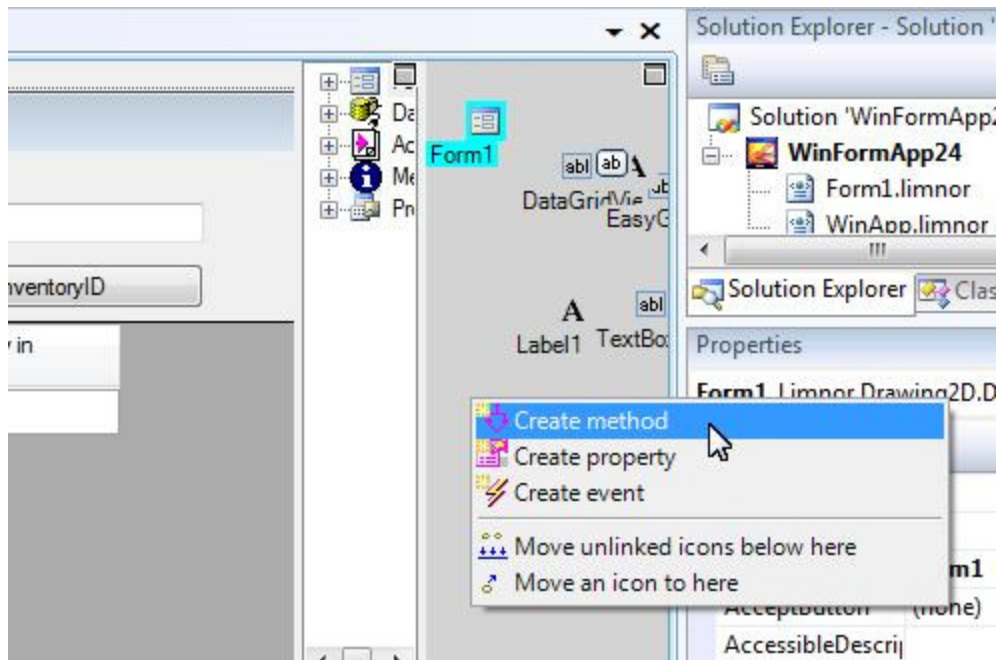
The Search method returns True if it finds a record matching the search criteria; it returns False if it does not find a matching record. You may use its return value to determine which actions to execute.

Use Search Action in a Method

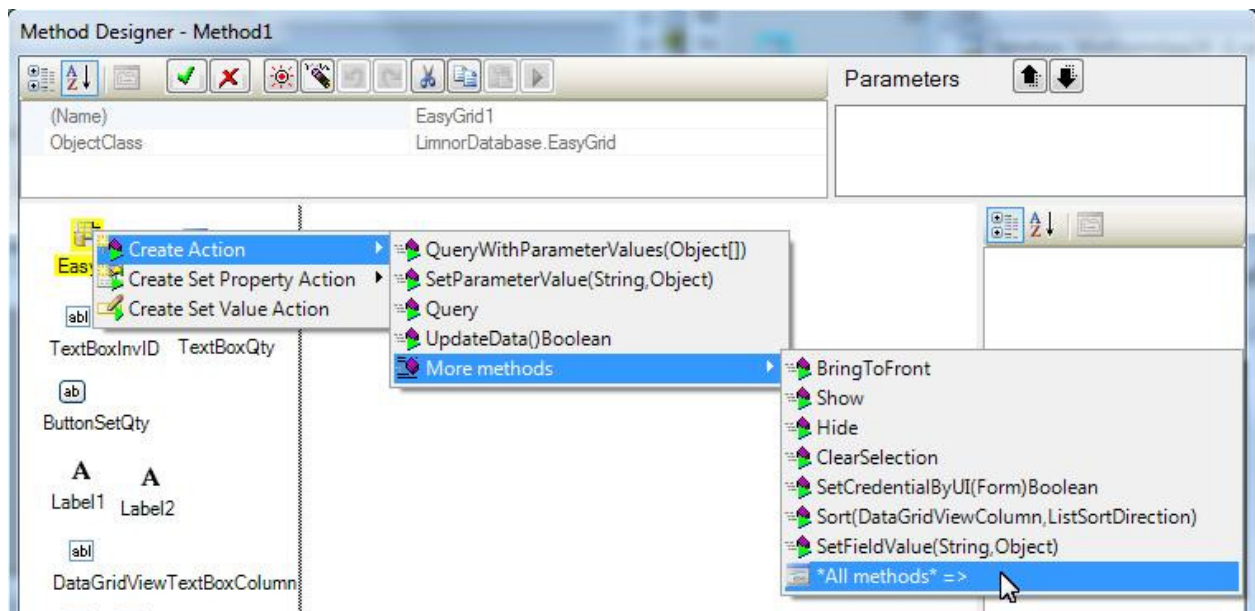
We use such an example to demonstrate the use of a Search action. Two text boxes are provided. One text box is for entering an ID which uniquely identify a record; the other text box for entering a new value of a field. We create a new method to do following things: use the ID to search for a record; if found then change a field value to the value entered in the text box.

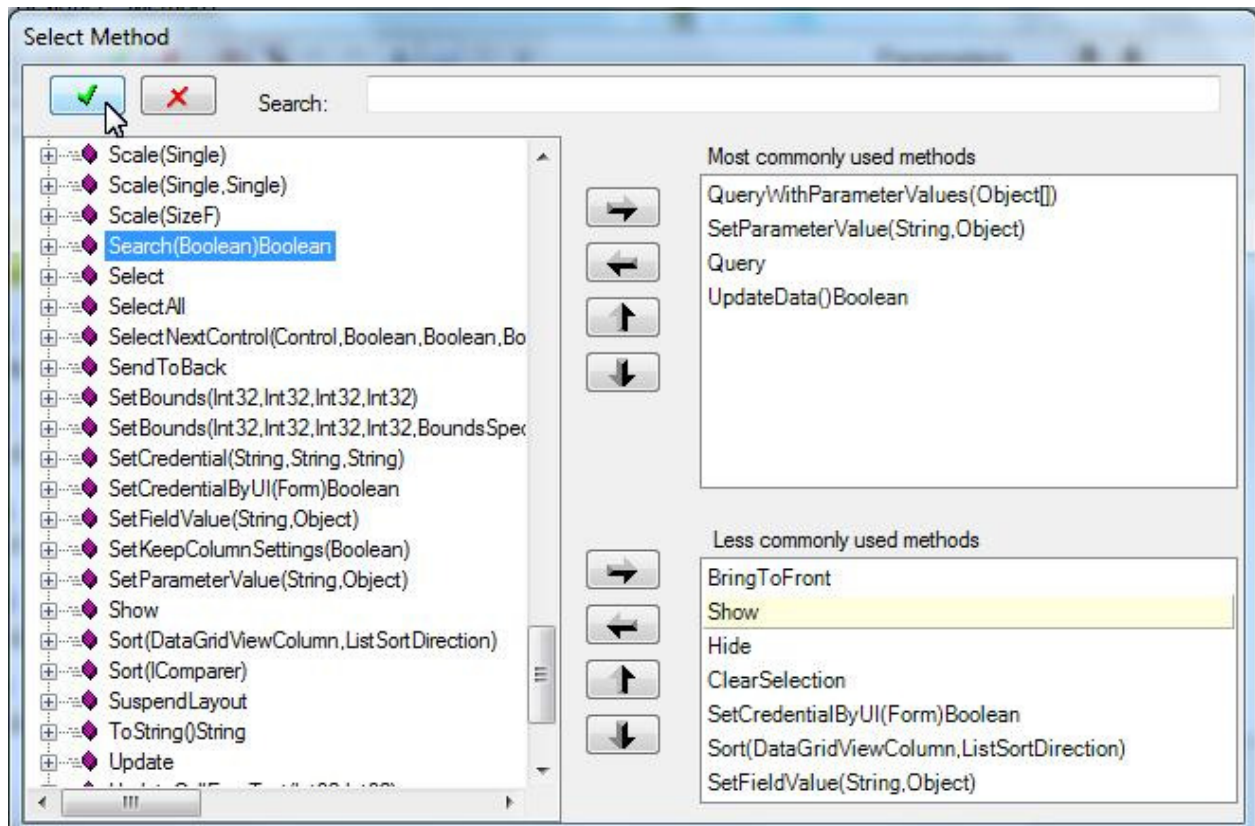
Create a method

Right-click the Event Path pane and choose “Create method”

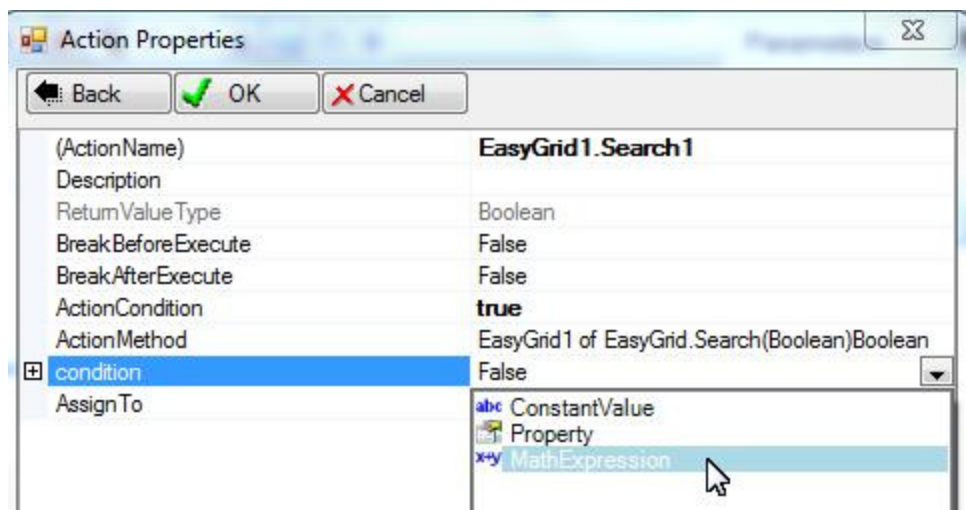


Right-click the EasyGrid, choose “Create Action”; select its “Search” method:

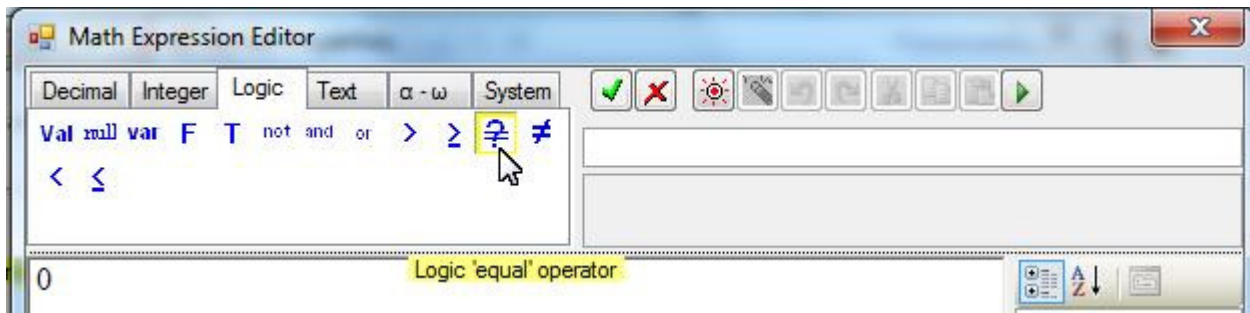




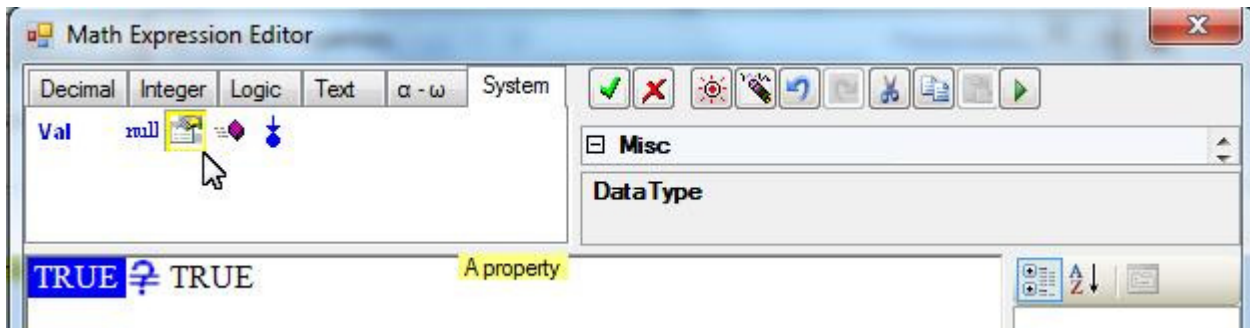
For “condition” parameter of the action, choose “Math Expression”:



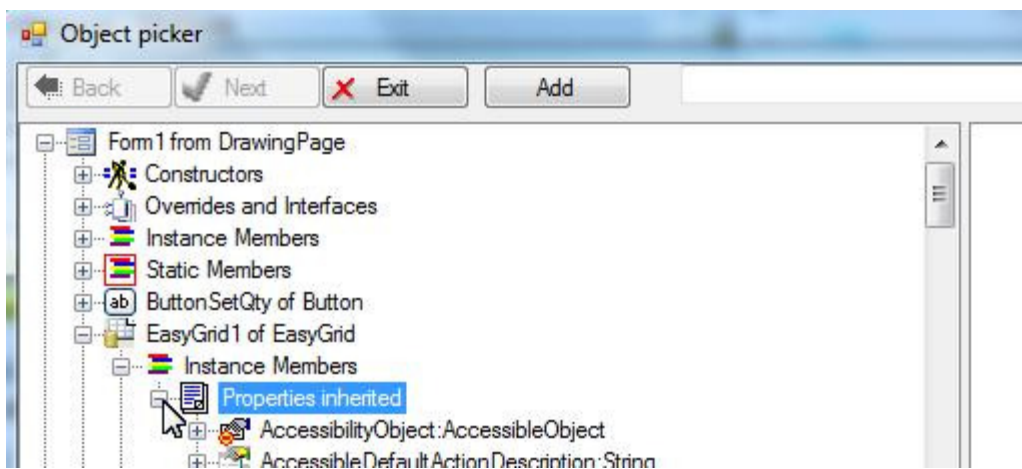
Choose “equal” comparison:

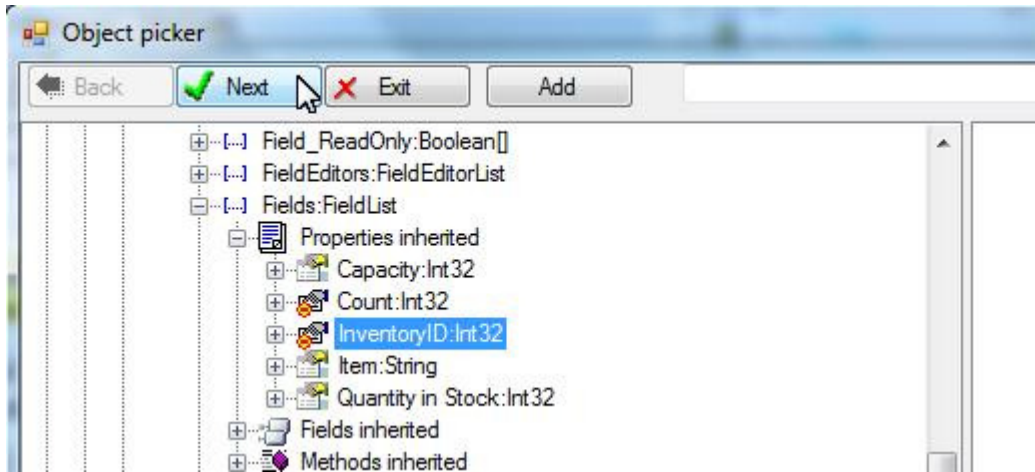


Use Property for the first element:

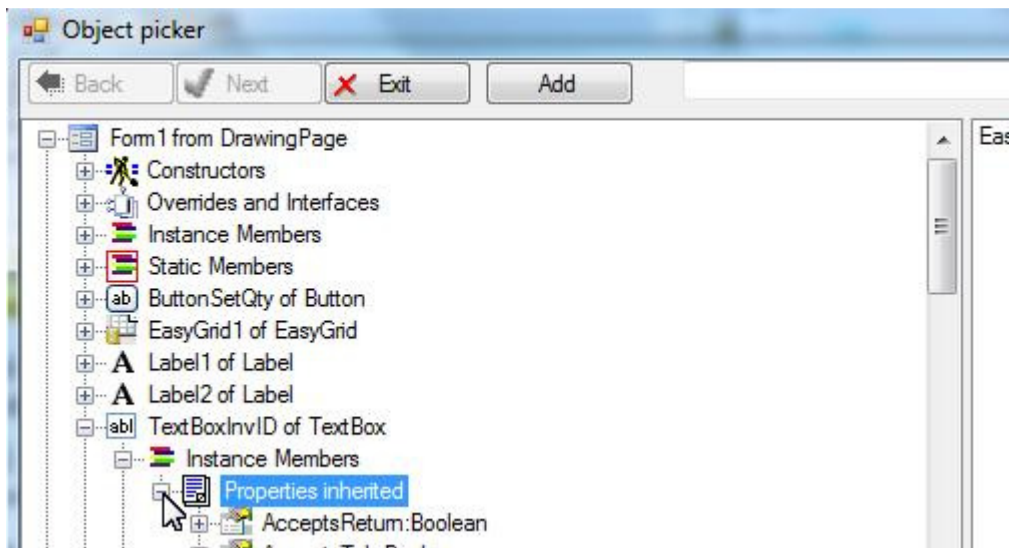
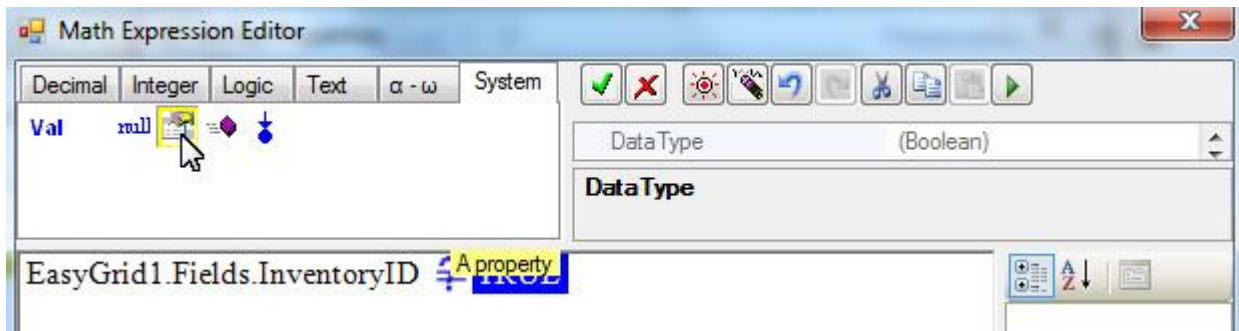


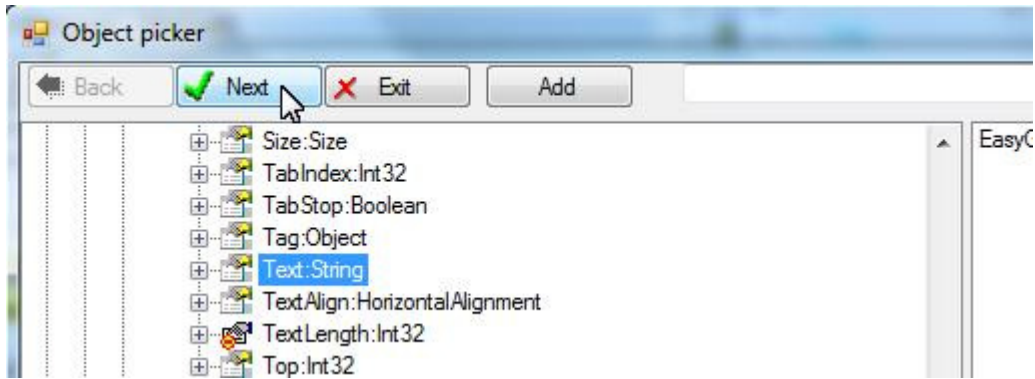
Select the InventoryID field of the EasyGrid:



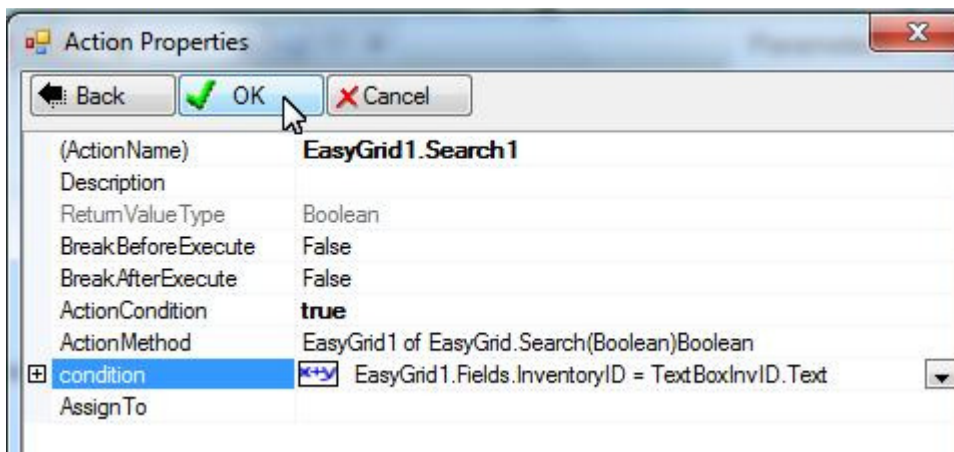
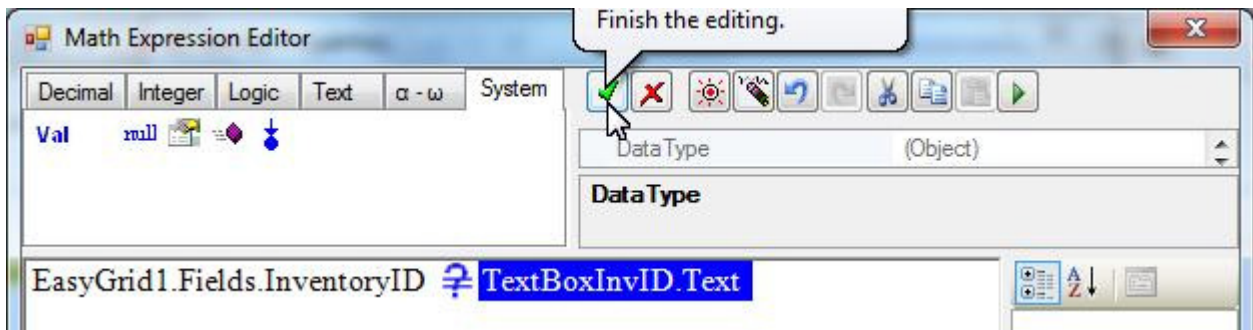


Use the Text property for the second element:

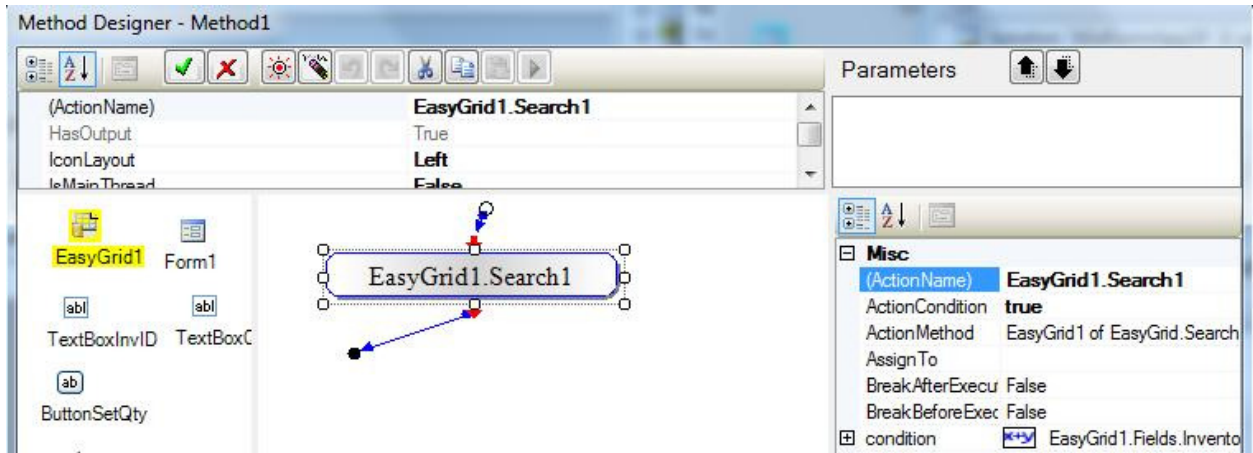




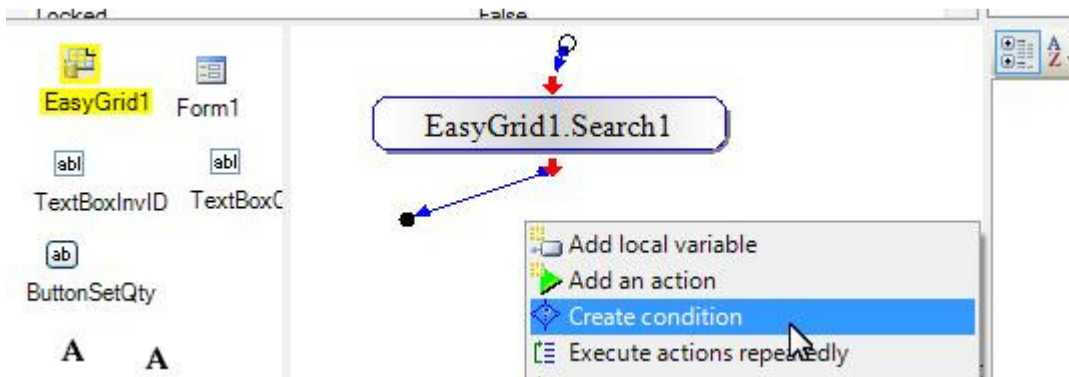
This is the search criteria we want to use:



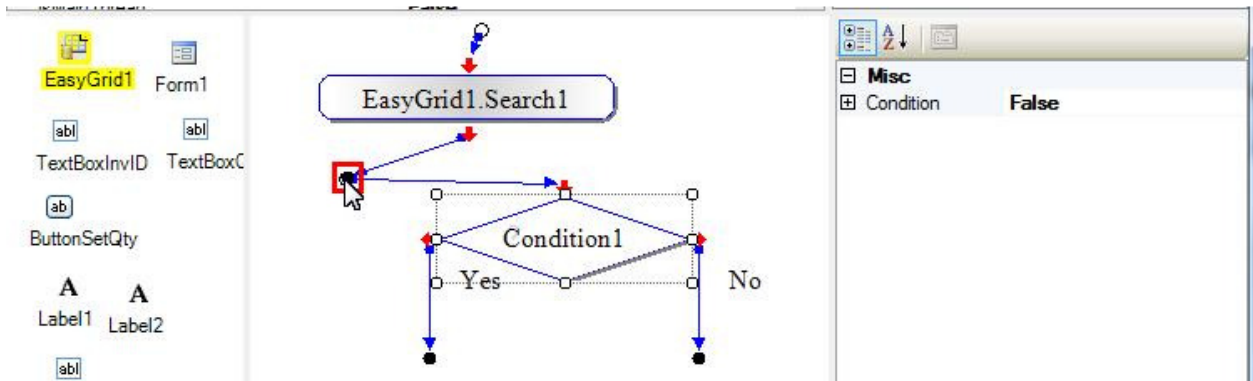
The search action appears in the Action Pane:



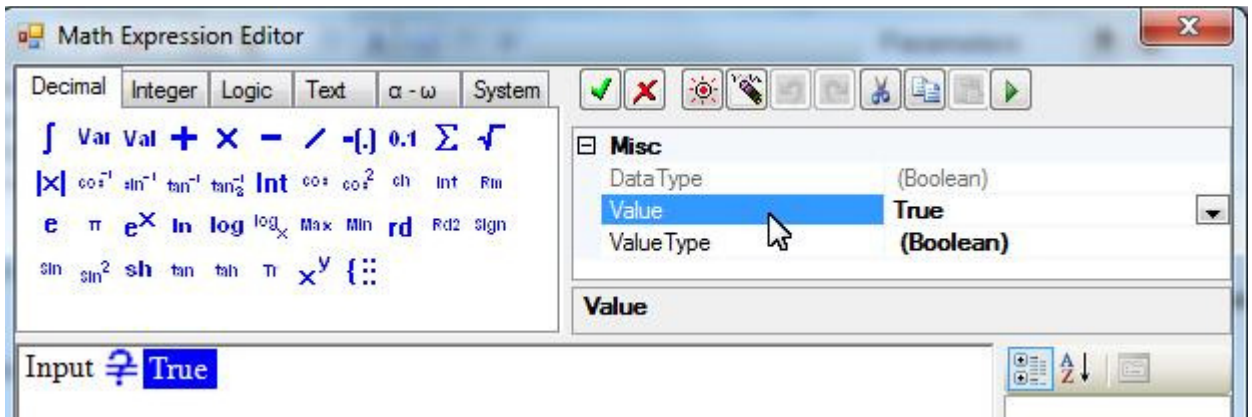
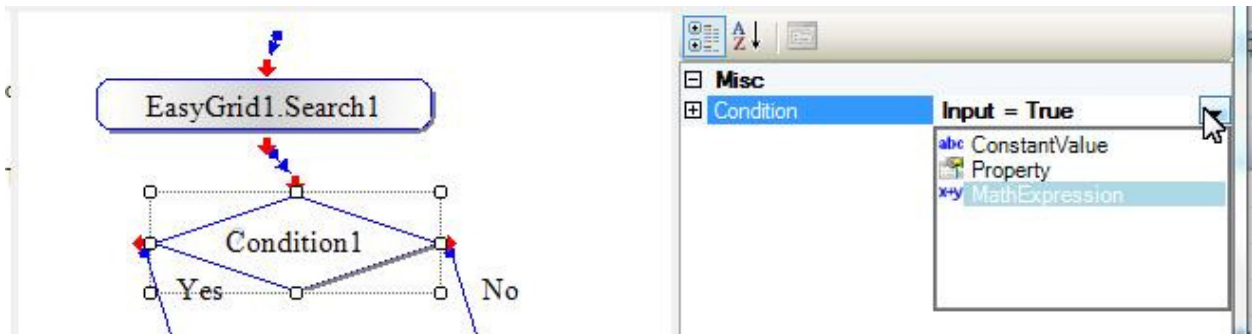
We may add a Condition action so that we may execute actions based on the search result. Right-click the Action Pane; choose "Create condition":



Link the input of the condition action to the output of the search action:



By doing this linking, the Condition of the condition action is set to use the Input value:

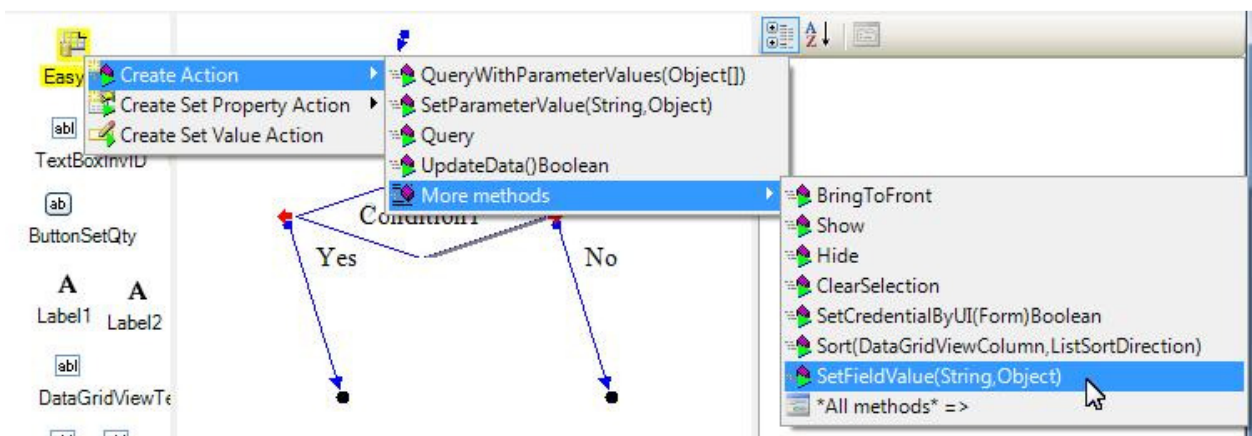


Input equals True means that the search action has found a record using the search criteria.

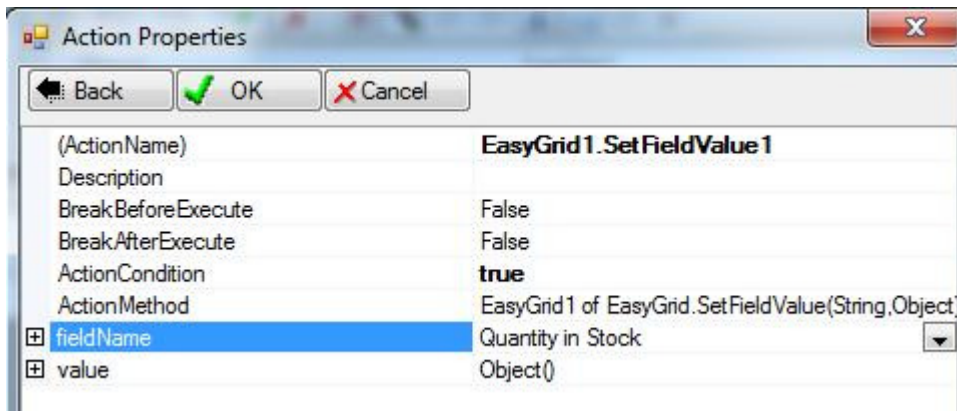
We may link actions to the Yes port of the condition action; those actions will only be executed when the search action locates a record.

In this sample, we add an action to set the field “Quantity in stock” to the value the user entered.

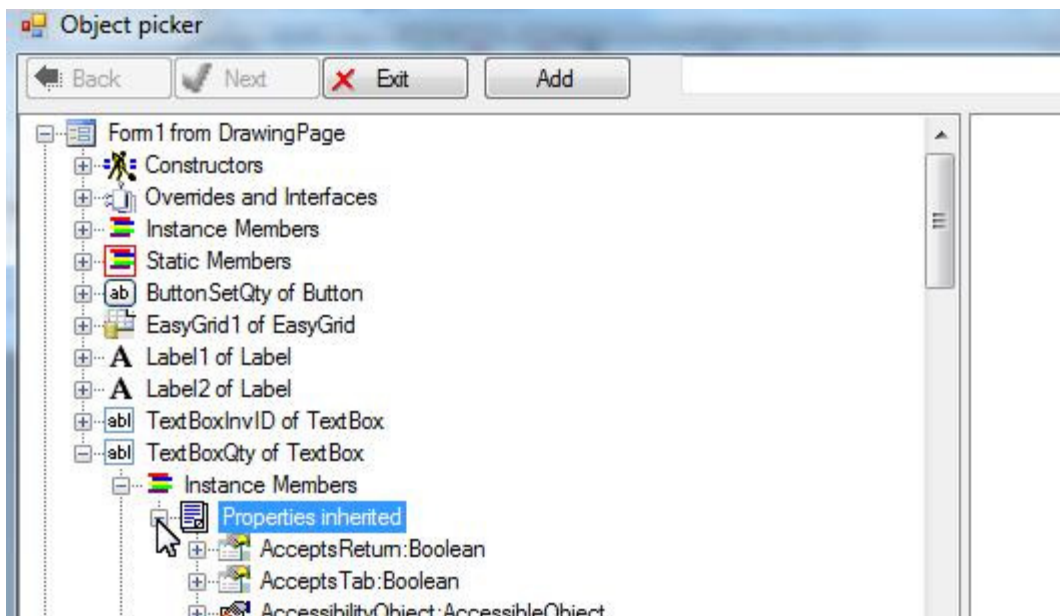
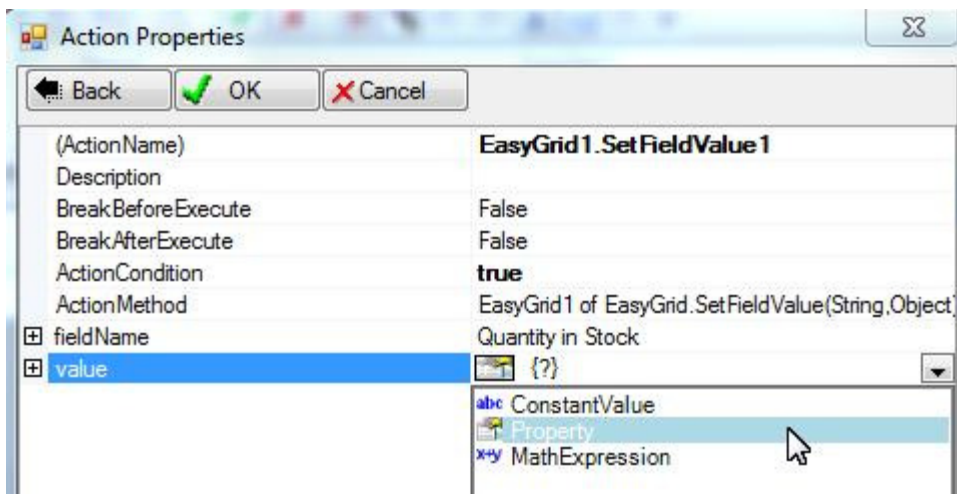
Right-click the EasyGrid; choose “Create action”; choose “SetFieldValue”:

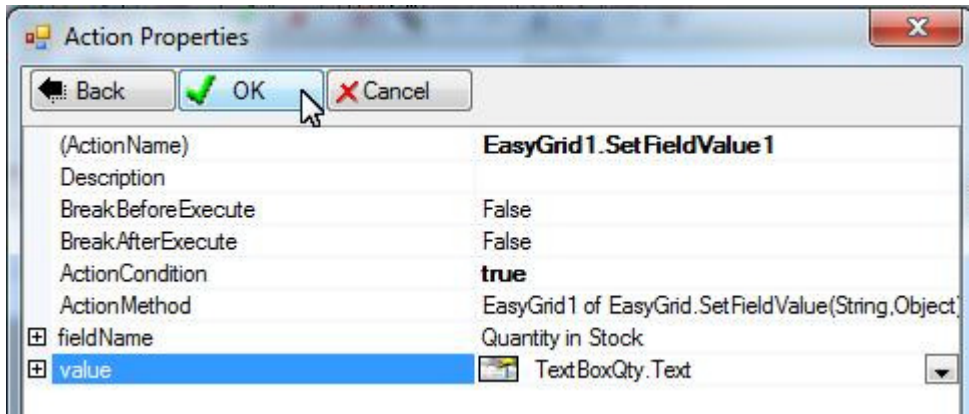
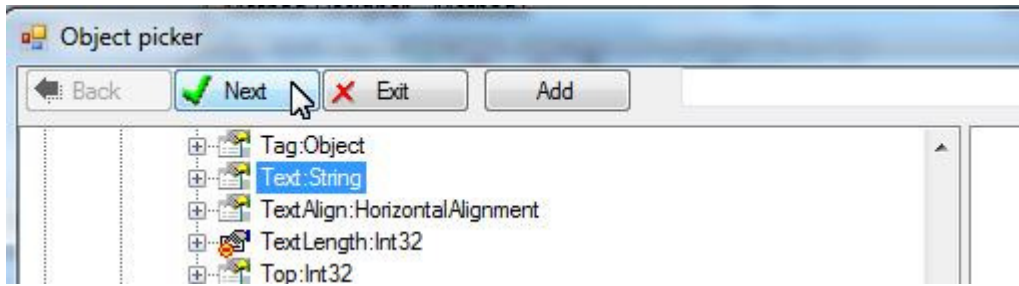


Specify field name:

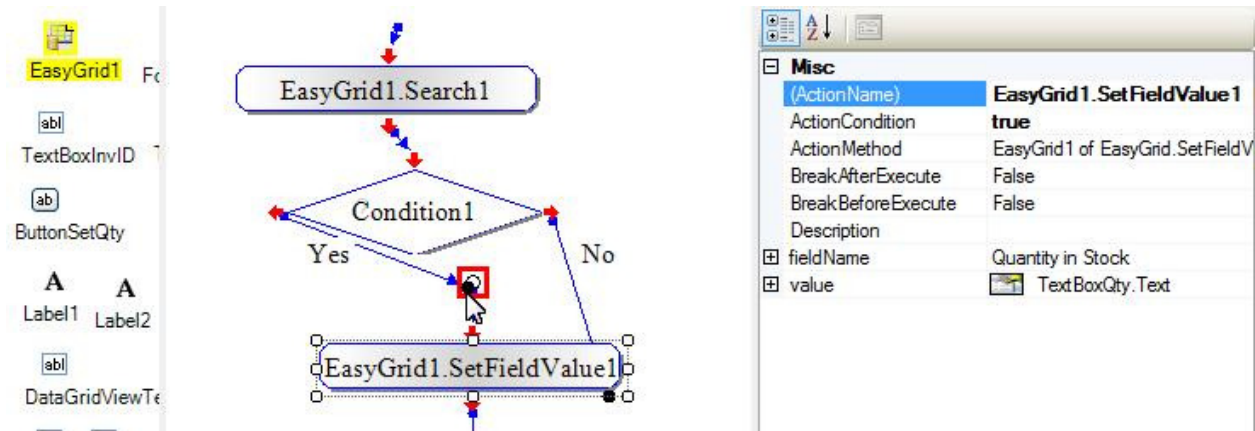


Select the Text property of the quantity text box for the “value”:

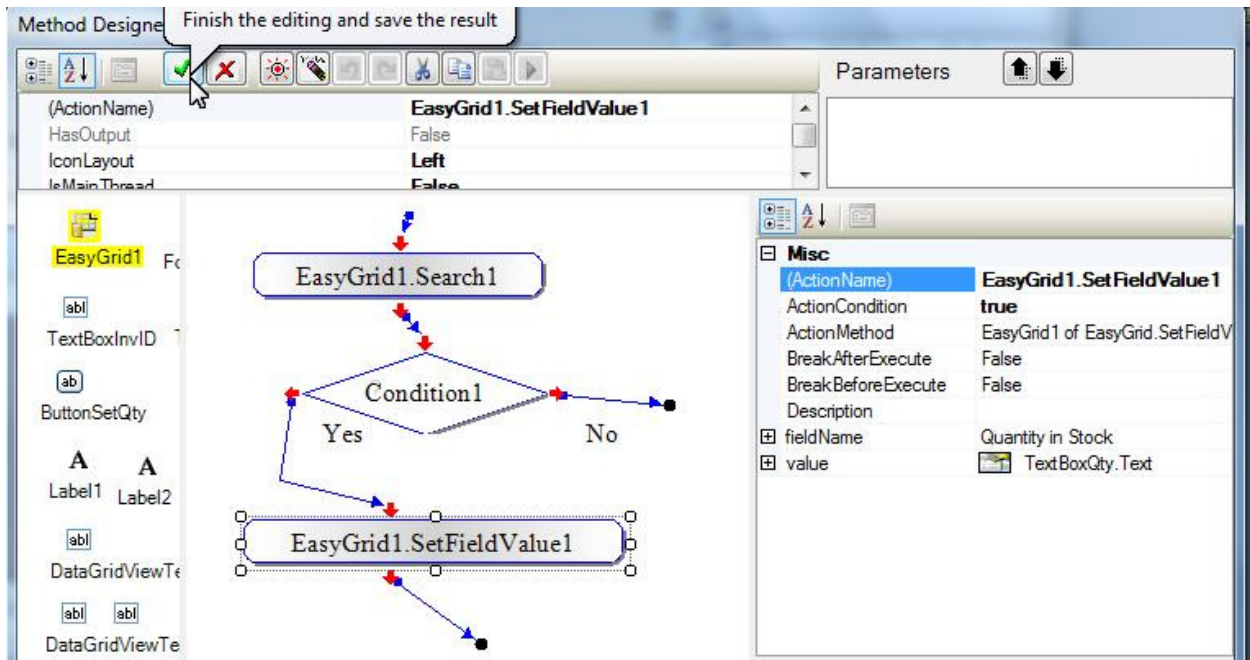




Link the action to the Yes port of the condition action:



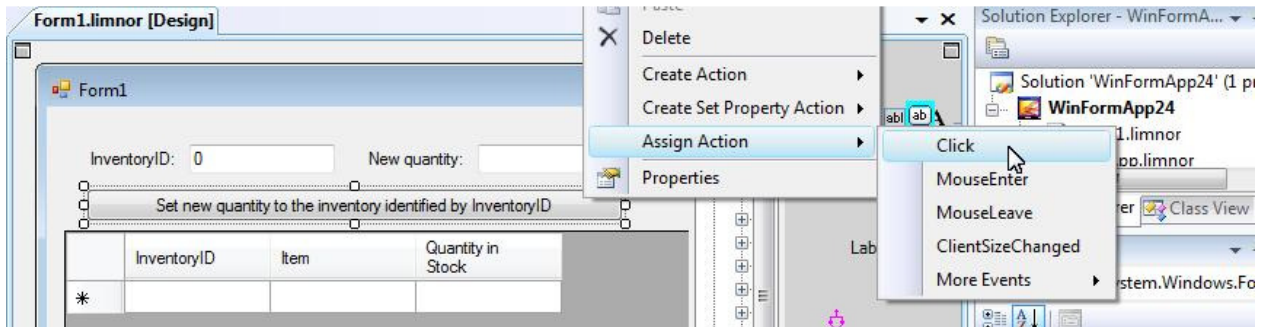
This is our sample method:



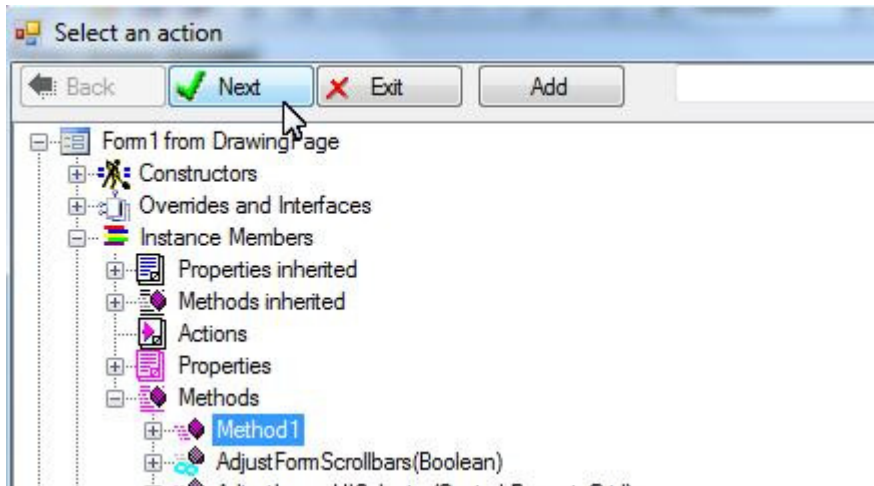
Execute method

We'll use a button to execute this method.

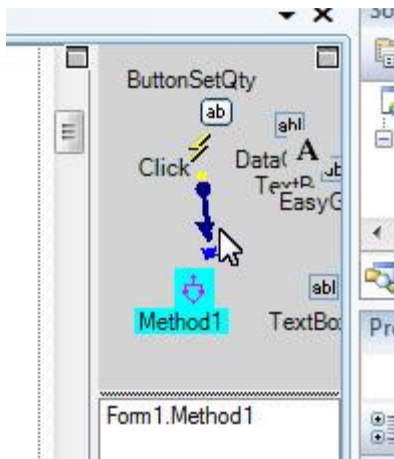
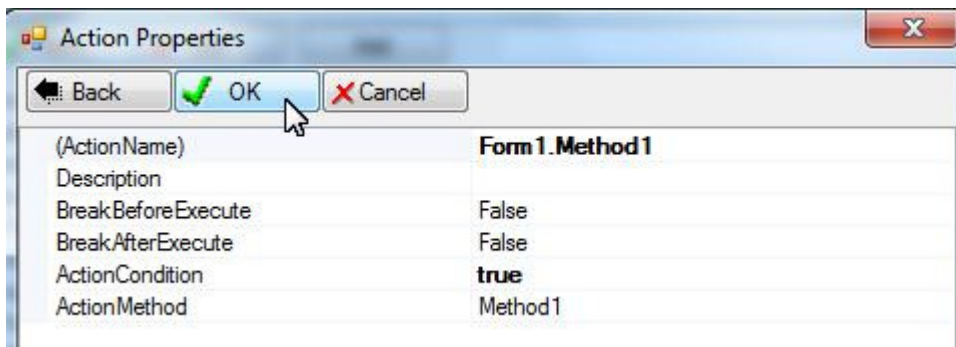
Right-click the button; choose "Assign action"; choose "Click" event:



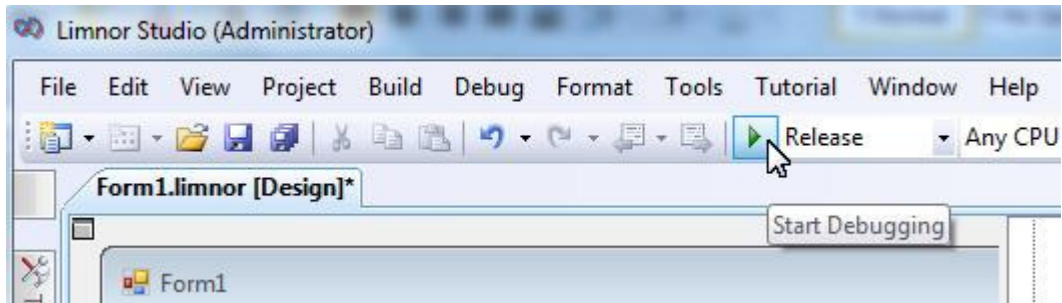
Select the method we just created; click "Next":



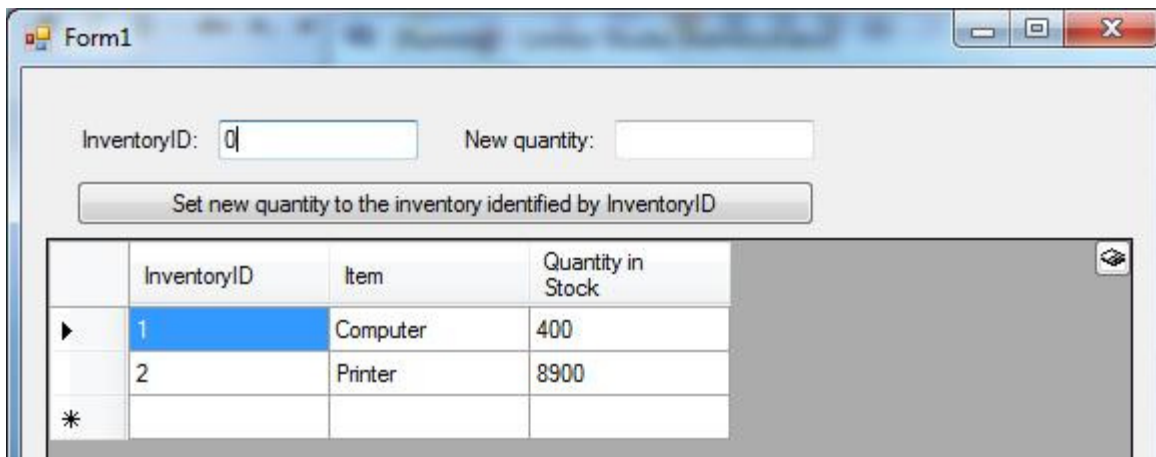
Click OK. An action is created and assigned to the button:



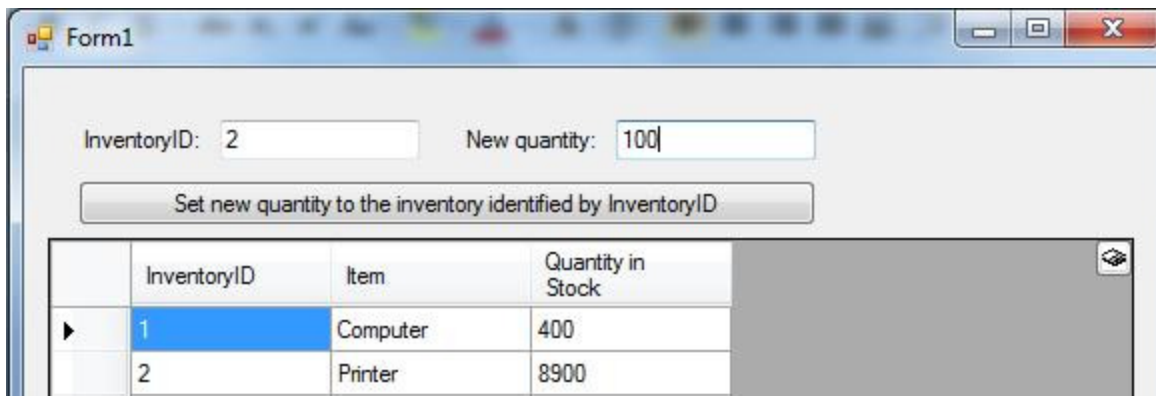
We may test the sample now:



The form appears.



Suppose we want to change the quantity of the second row from its original value 8900 to 100, we may enter 2 for the InventoryID and 100 for the "New quantity":



Click the button. We can see that the second row becomes the current row and the value of "Quantity in Stock" becomes 100:

Form1

InventoryID: New quantity:

InventoryID	Item	Quantity in Stock
1	Computer	400
2	Printer	100