

Show Splash Image

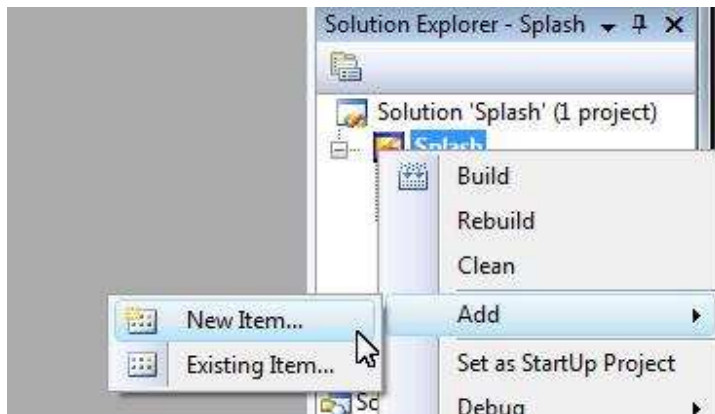
Contents

Create a form as a splash window	1
Show splash at BeforeStart event	4
Close Splash	5
Test	7

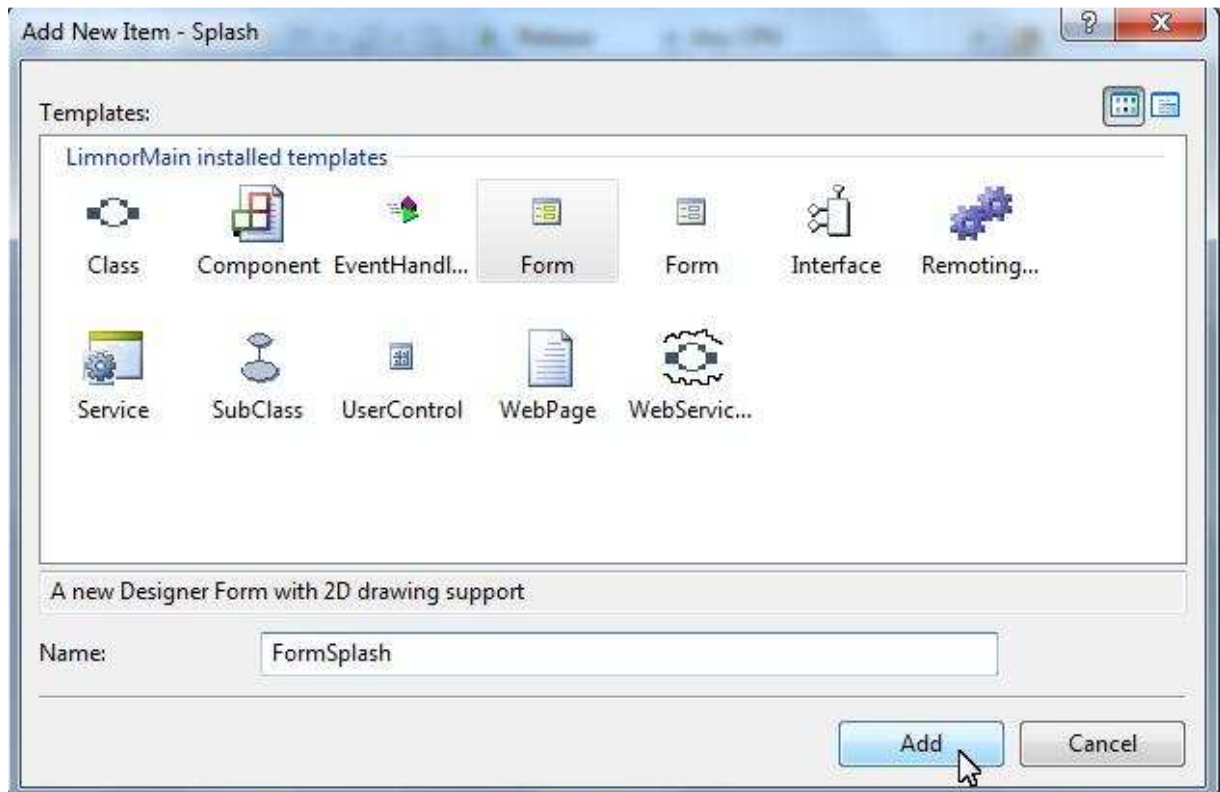
Create a form as a splash window

If your application needs to take some time to load then you may want to show a splash image during the loading of your application.

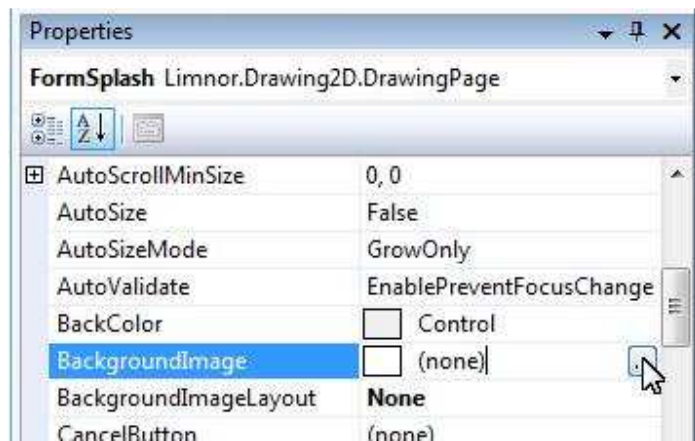
As an example, we use a form to show a splash image. Add a new form:

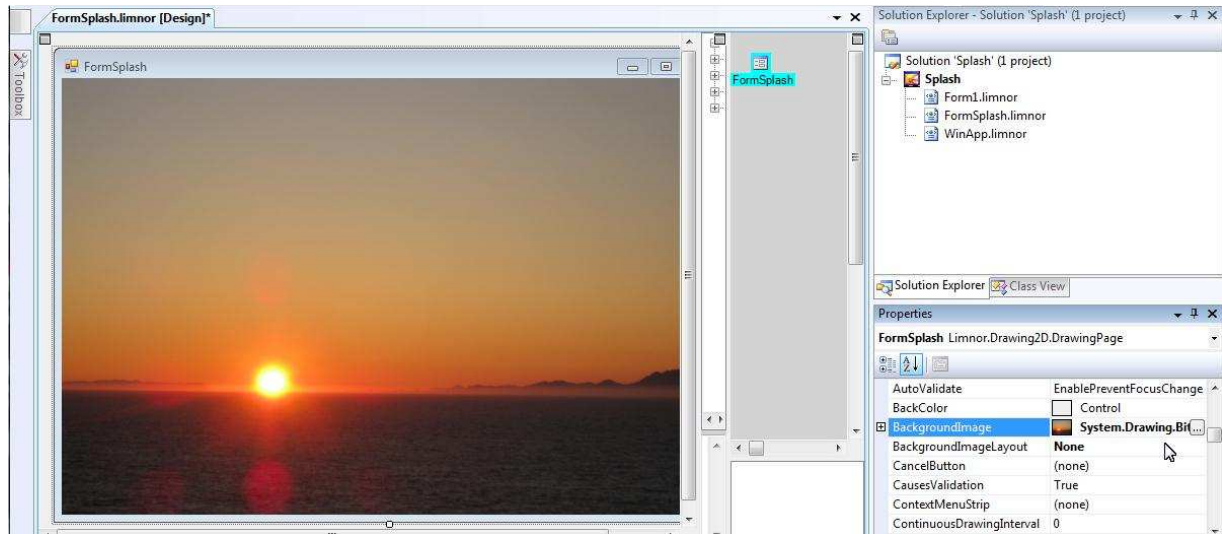


Name the new form FormSplash:

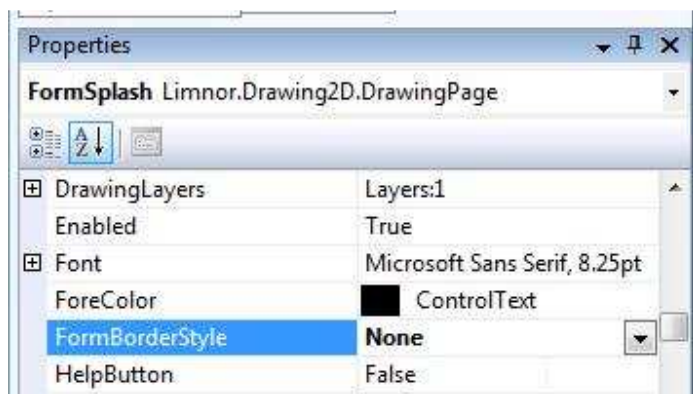


Set the properties of FormSplash according to your desire. For example, set BackgroundImageLayout to None. Set BackgroundImage to an image file:

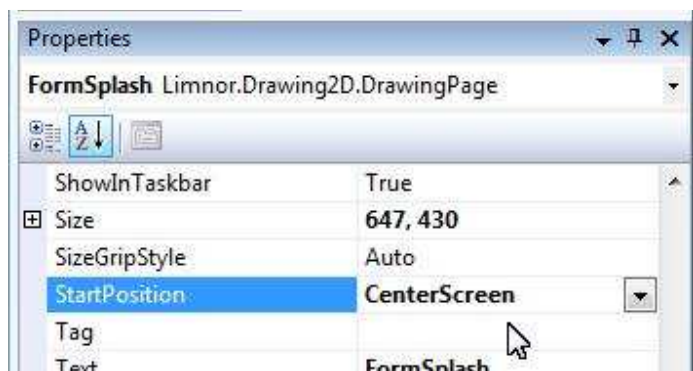




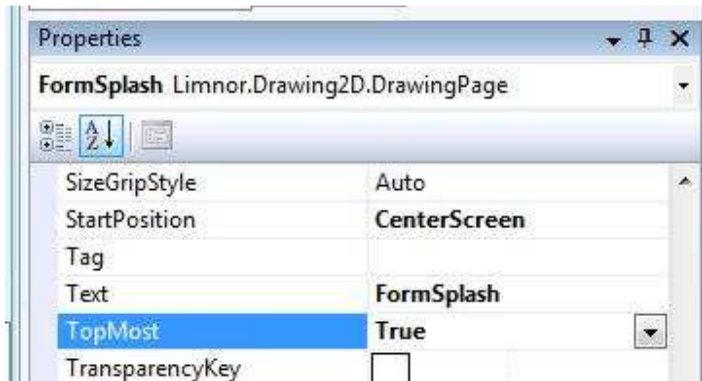
Remove form border:



Show in center:

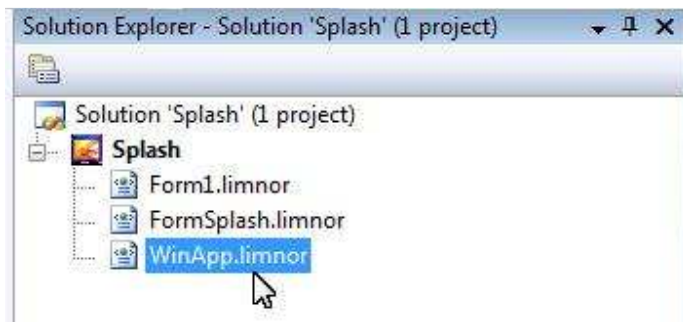


Set TopMost to True so that it will display on top of other windows:

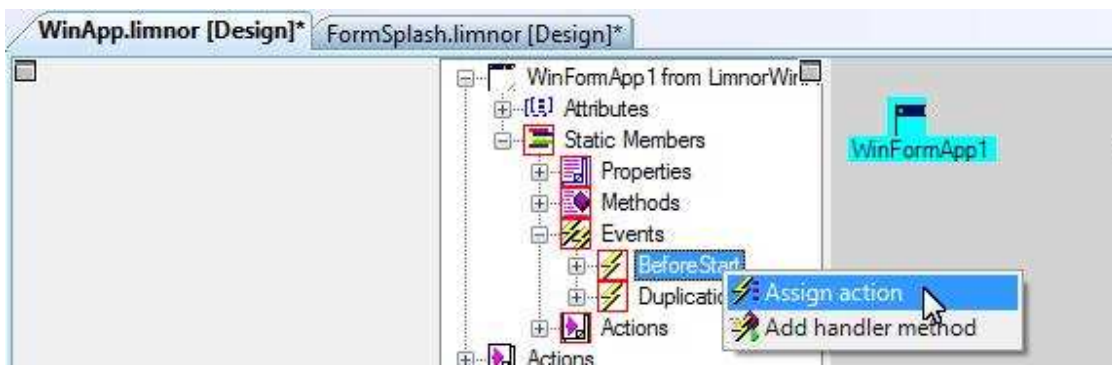


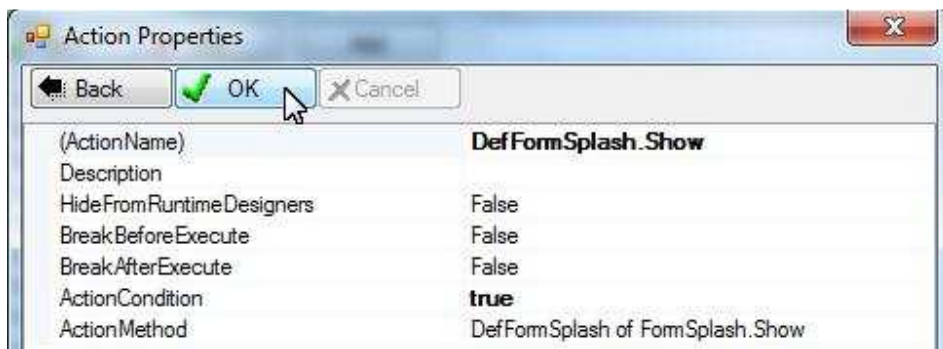
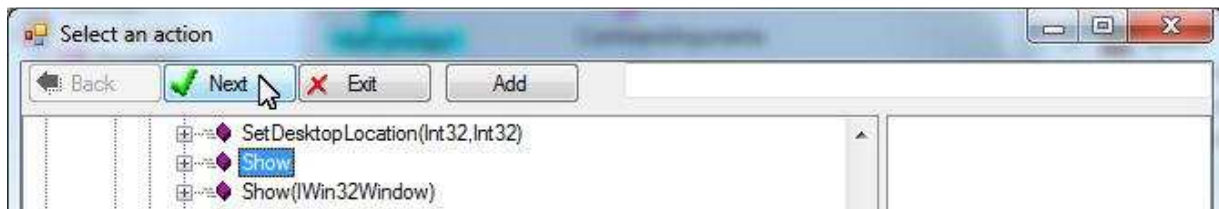
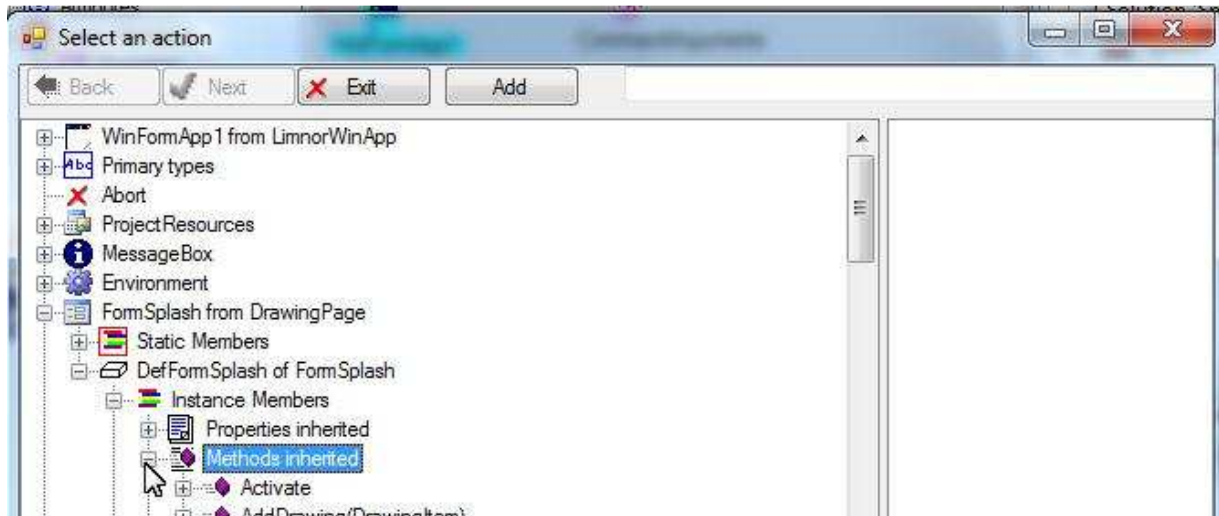
Show splash at BeforeStart event

Open the application object:

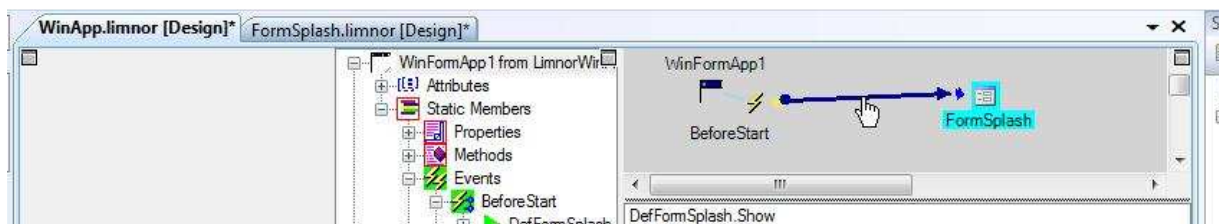


Assign action to BeforeStart:



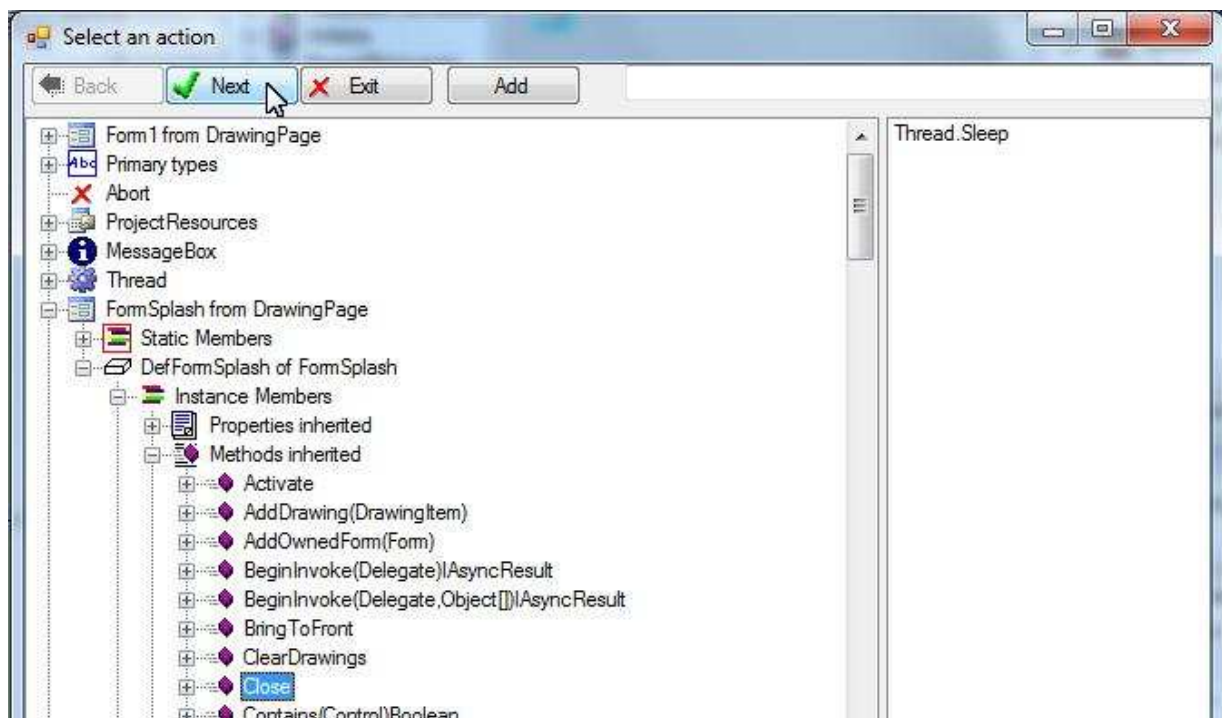
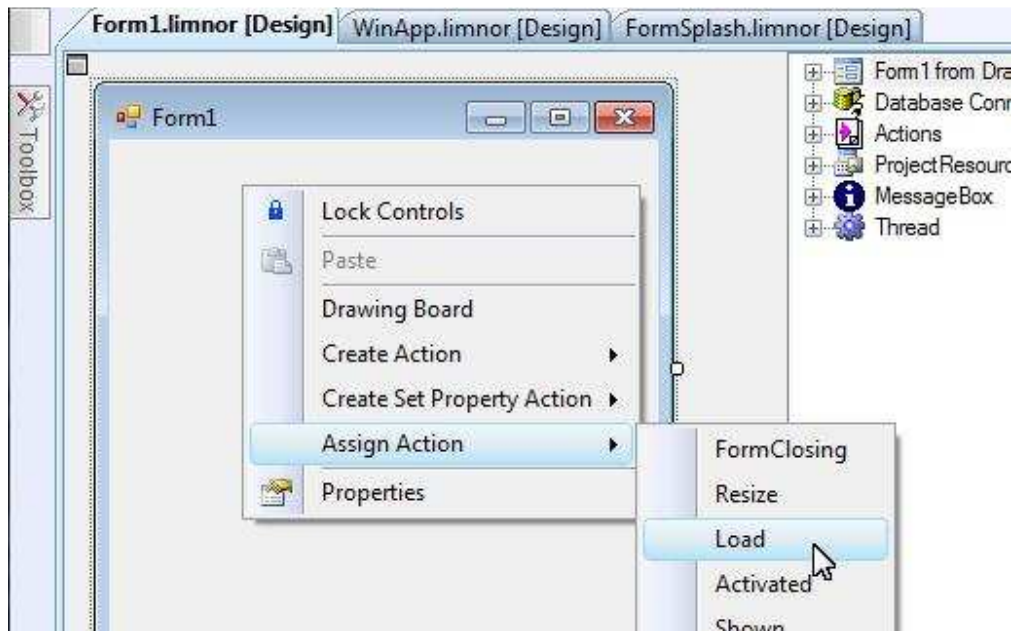
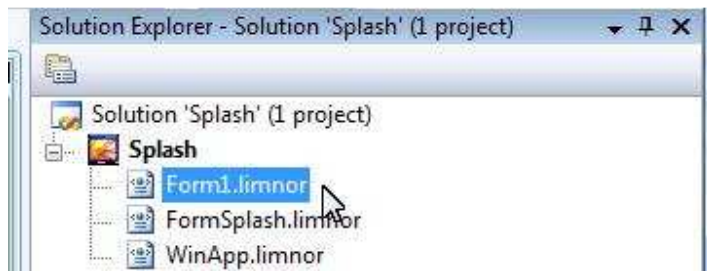


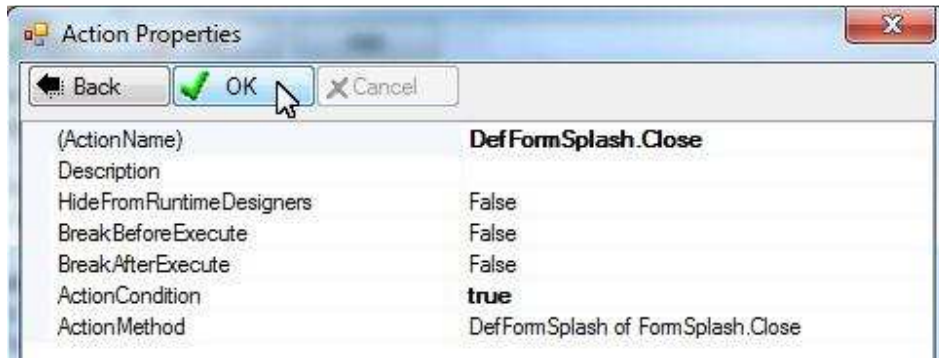
The action is assigned to the event:



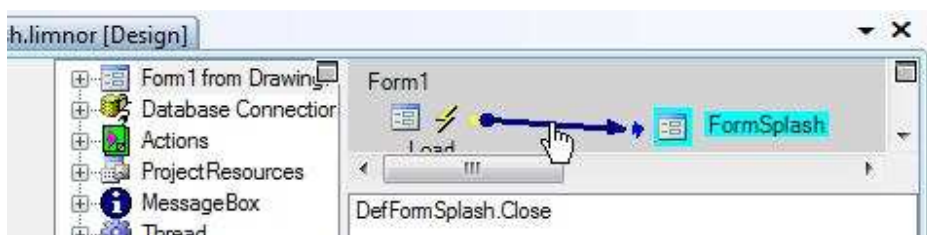
Close Splash

We must close the splash window at the time when application loading finishes. The exact time of closing the splash window will be determined by your specific application situation. In this sample, we close the splash window at the end of Load event of Form1.



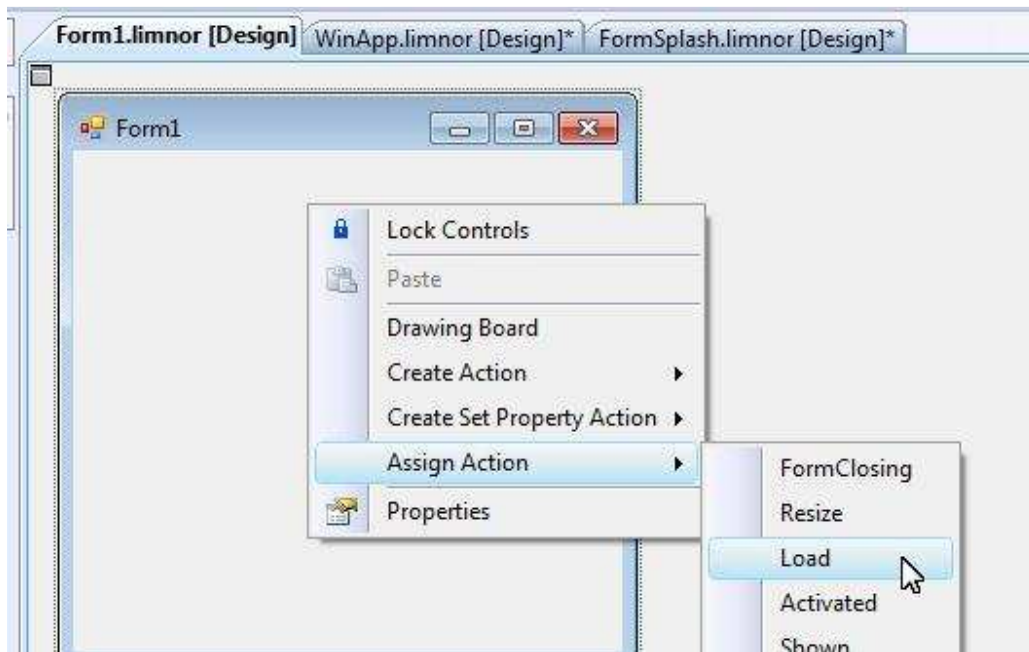


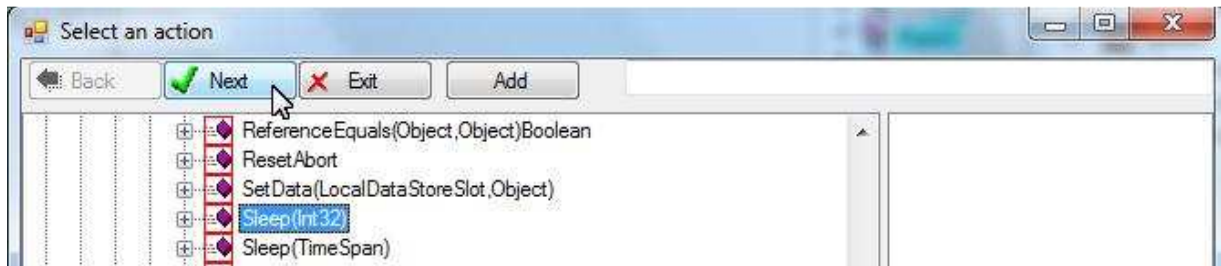
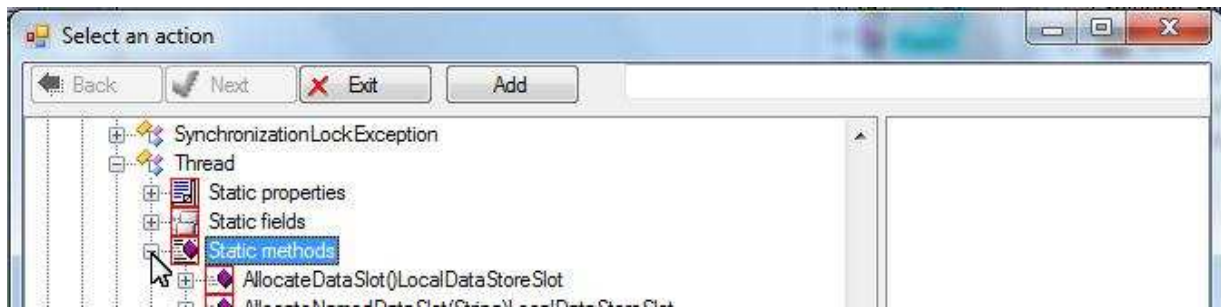
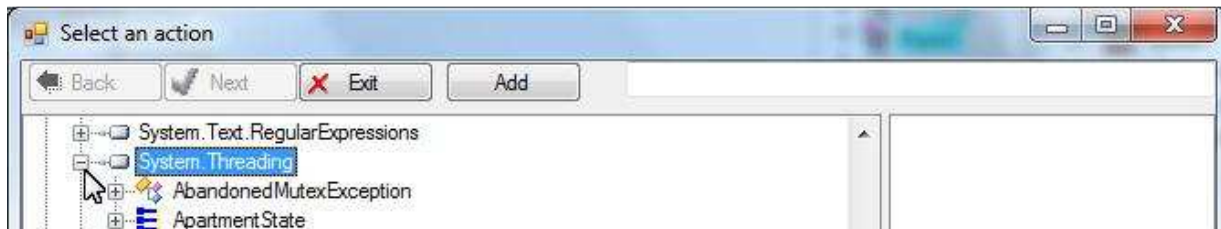
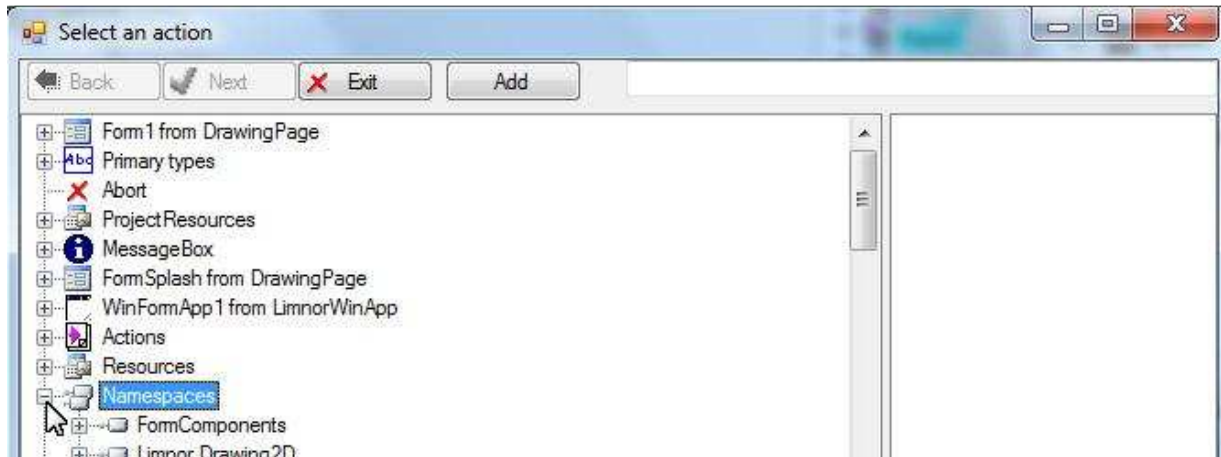
The action is created and assigned to the Load event of Form1:

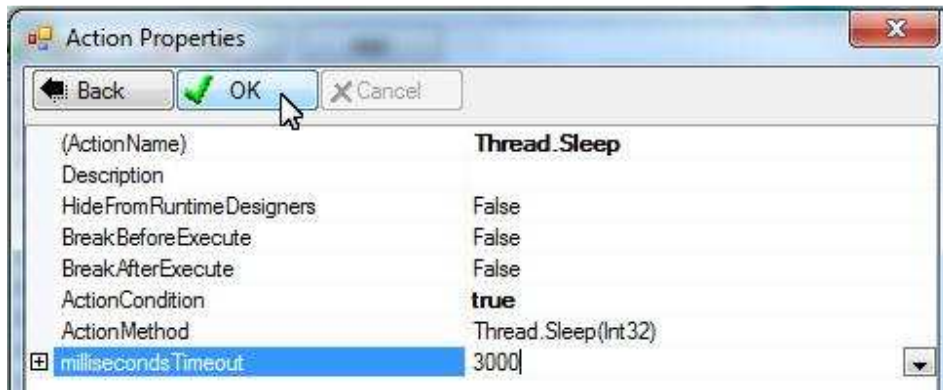


Test

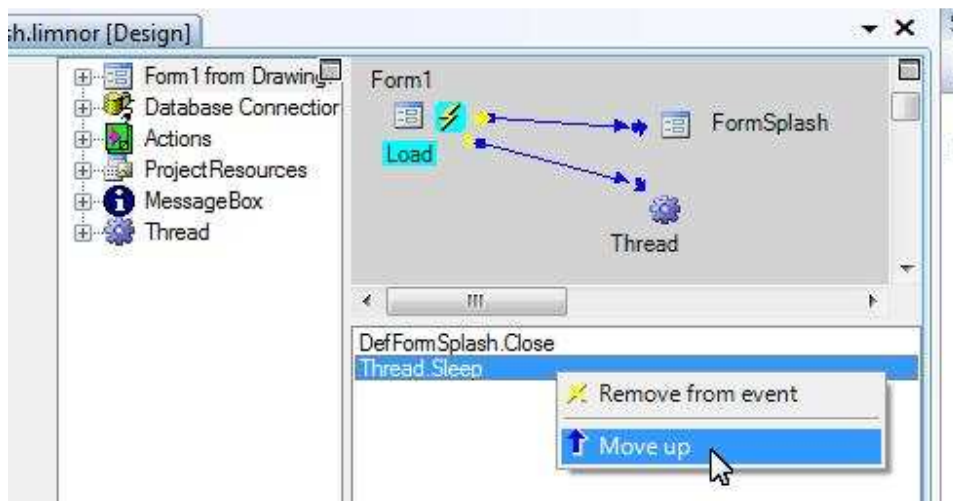
For this example, the application takes no time to load. To add some loading time, add a sleep action to make the application sleep 3 seconds at the time of loading Form1:



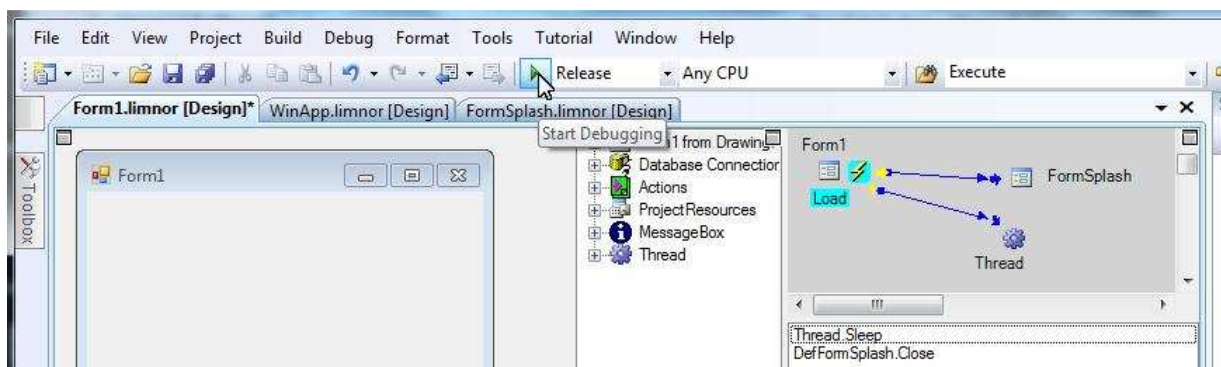




The sleep action is created and assigned to Load event of Form1. We need to move it to the beginning of the event:



Click the Run button:



We will see an image appears first:



After 3 seconds, the image disappears and Form1 appears:

