

Switch Web Event Handler

Contents

Introduction 1

Use SwitchEventHandler actions 2

 Switch handler at runtime (1) 2

 Switch handler at runtime (2) 7

 Remove Event Handler 12

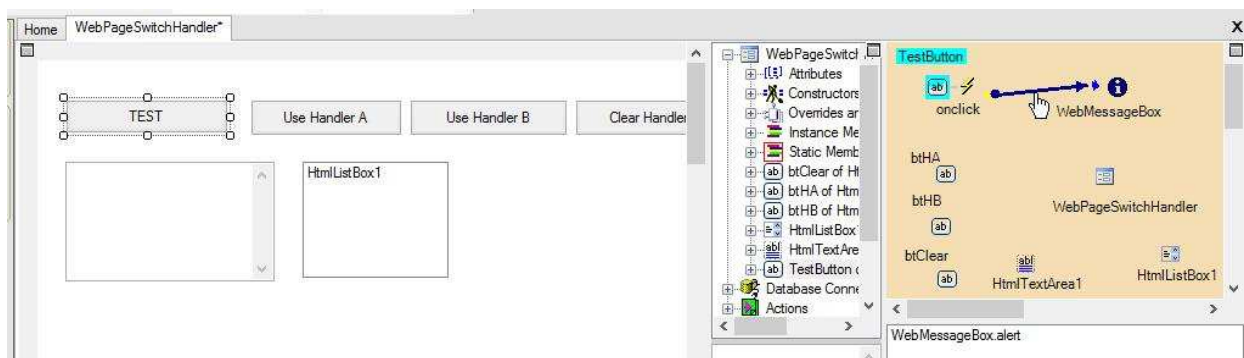
Test 14

Feedback 16

Introduction

Usually actions are assigned to events at design time. In some situations at runtime, you may want to change what to be executed for some events. Conditional execution is one way of doing it. Switching event handler is another way of doing it. This document uses a sample project to show how to switch event handler at runtime.

The sample web page has a button, TEST button. Clicking the TEST button, it shows a message box. The sample web page uses another 3 buttons to switch the event handler of the TEST button. Thus, clicking one of these 3 buttons will make the TEST button function differently.



At design time we assigned a message box action to the onclick event of the TEST button. This is for demo purpose only. You do not need to assign action at design time if it is not needed.

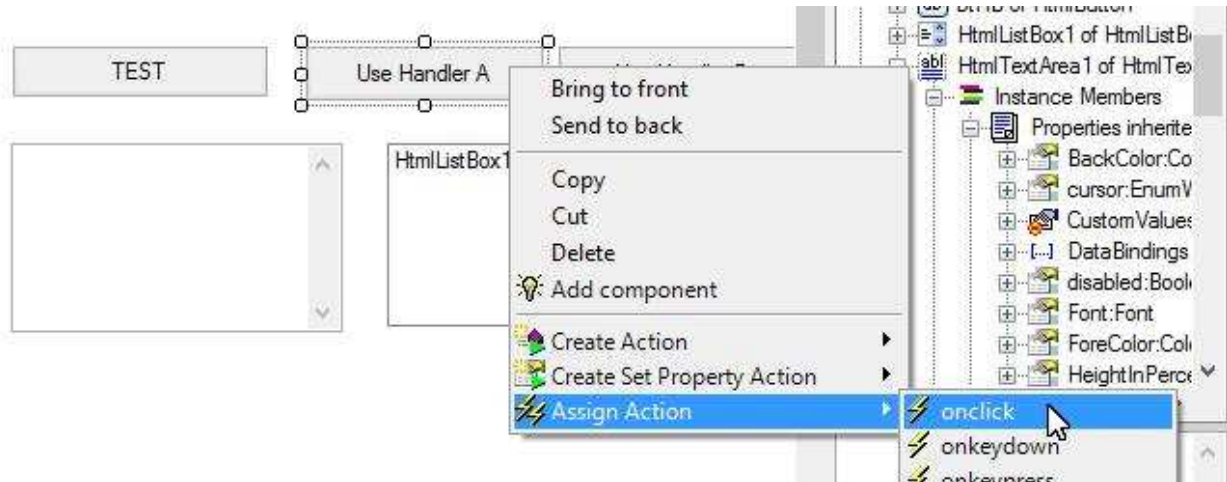
Use SwitchEventHandler actions

Every web control has a SwitchEventHandler method for switching event handler at runtime.

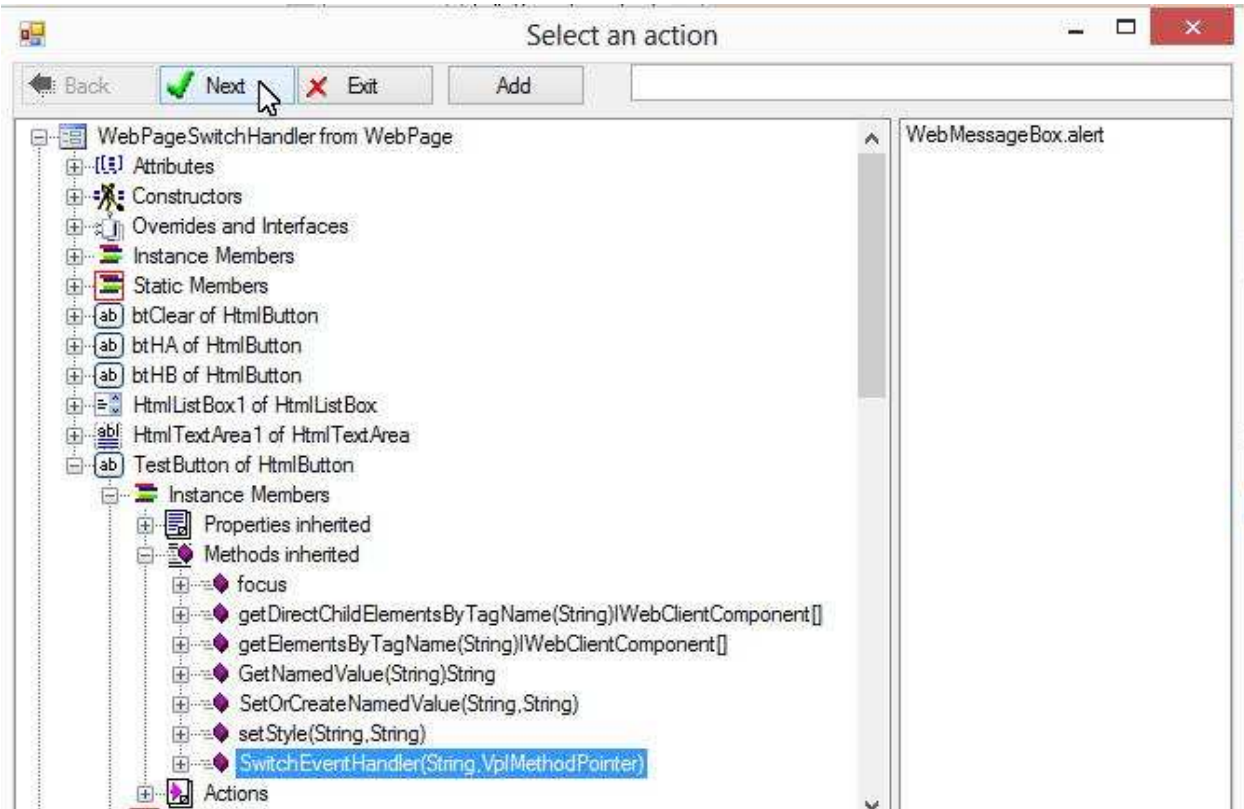
Switch handler at runtime (1)

Suppose when the user clicks button “Use Handler A”, we want to change the TEST button’s functionality to be showing a message in the text box.

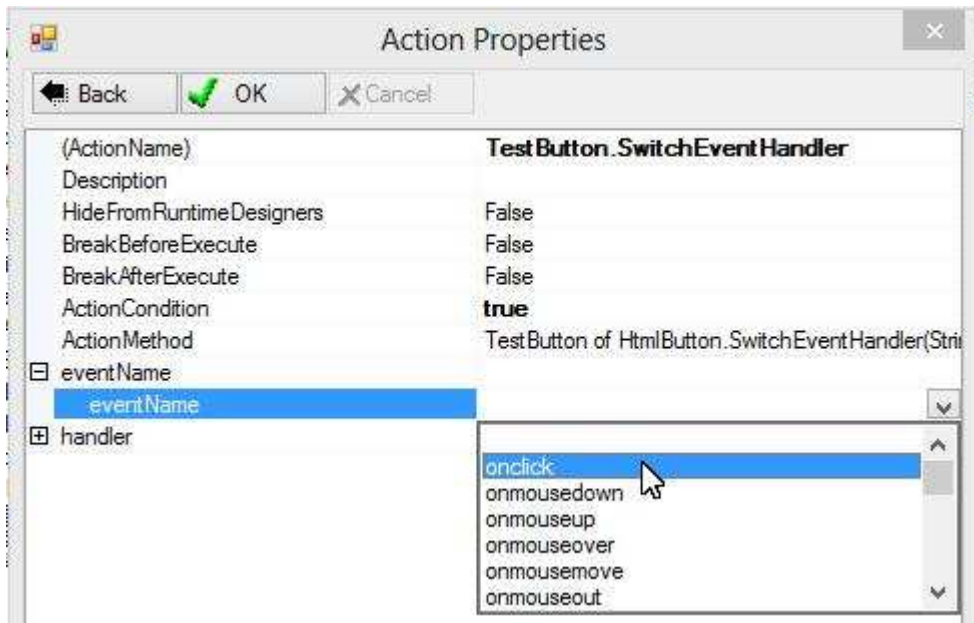
Right-click button “Use Handler A”; choose “Assign Action”; choose “onclick” event:



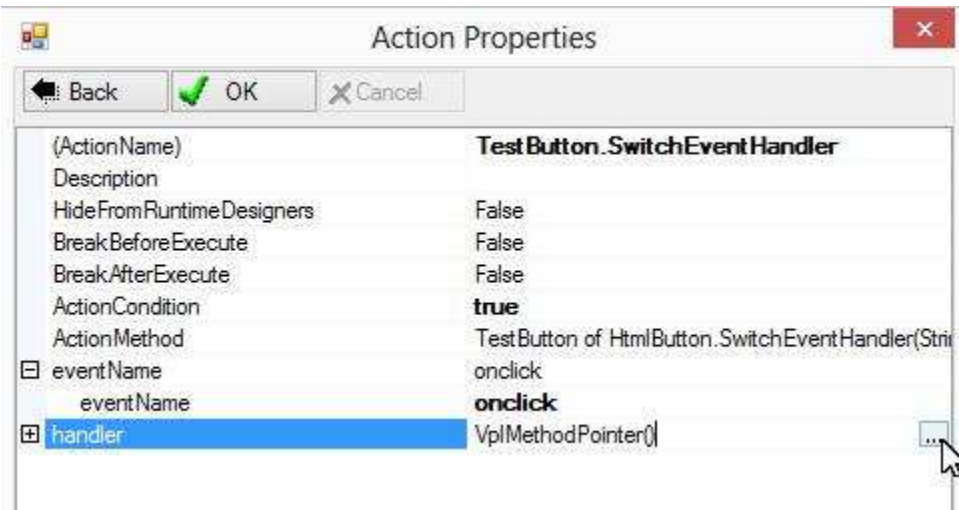
Select SwitchEventHandler method of the TEST button:



Choose "onclick" event for "eventName" of the action:



Click "..." to choose an event handler:



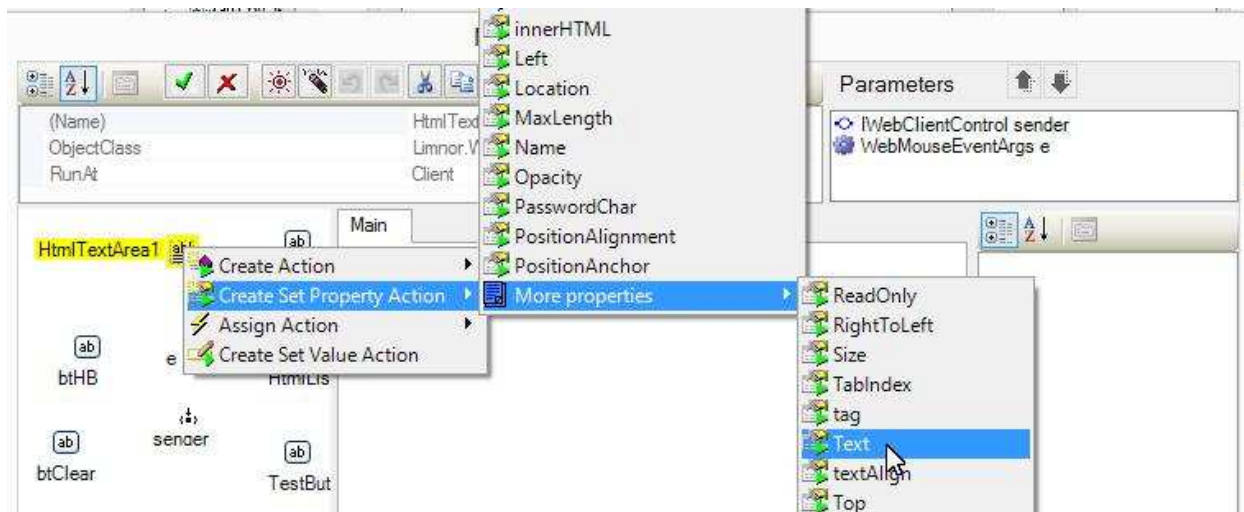
Click "Create new handler" to create a new event handler:



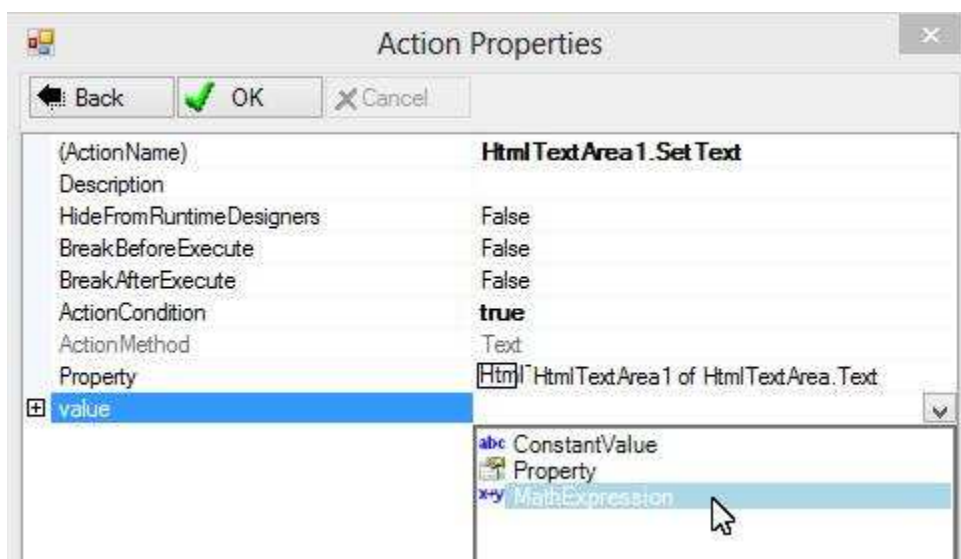
A Method Editor appears for creating a new event handler:



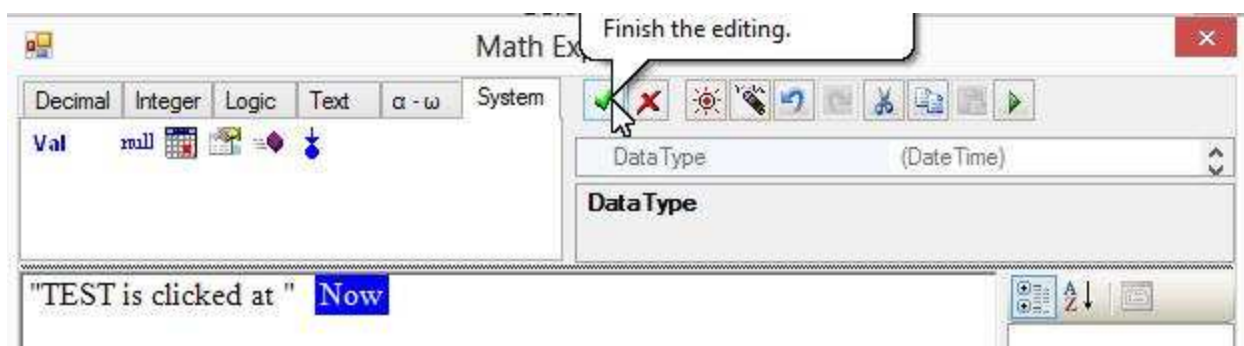
Actions added to this method will be executed when the TEST button is clicked because "eventName" is "onclick". For this sample, we show a message in a text box.

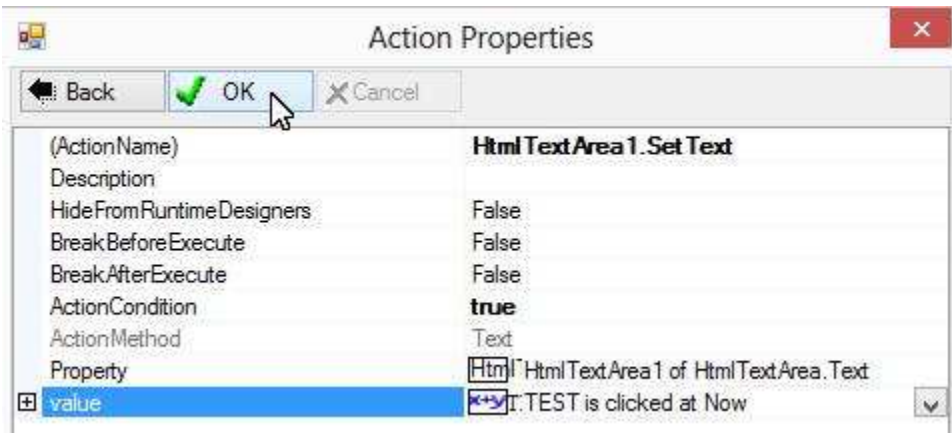


We form an expression to be displayed in the text box:

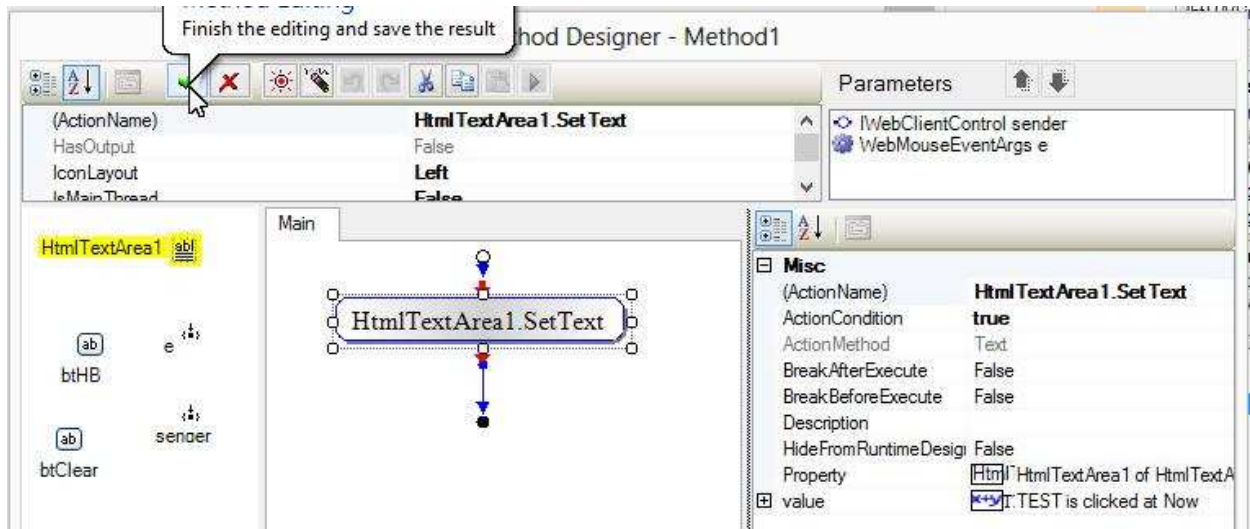


For this sample, we show current date time:

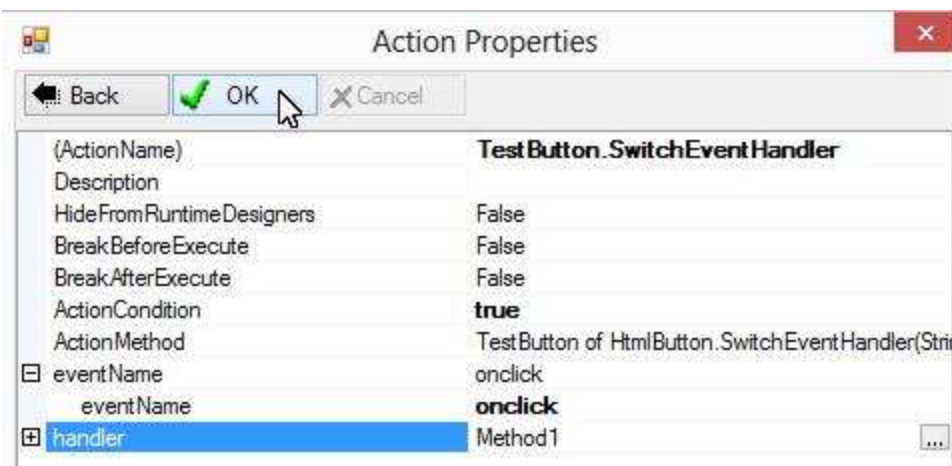




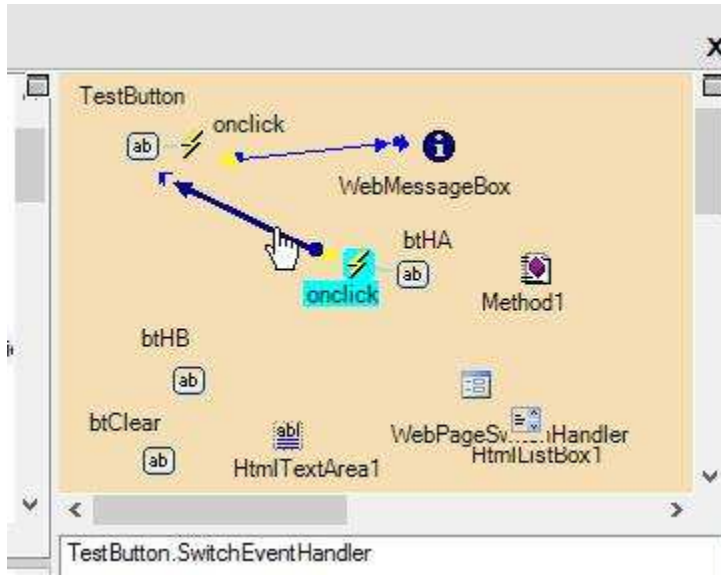
For this example, we just need this one action:



Click OK to finish creating this SwitchEventHandler action:



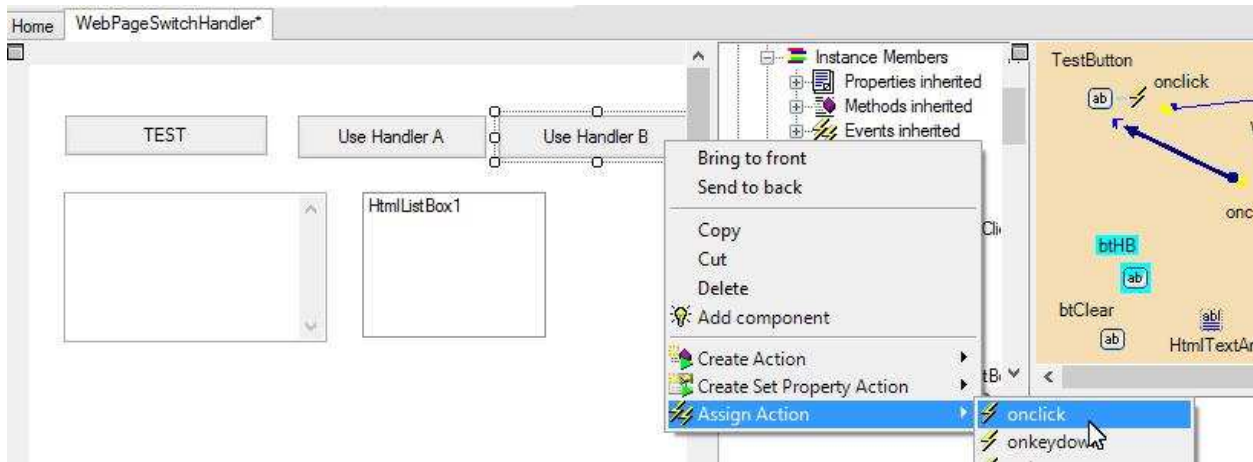
The action is created and assigned to button "Use Handler A":



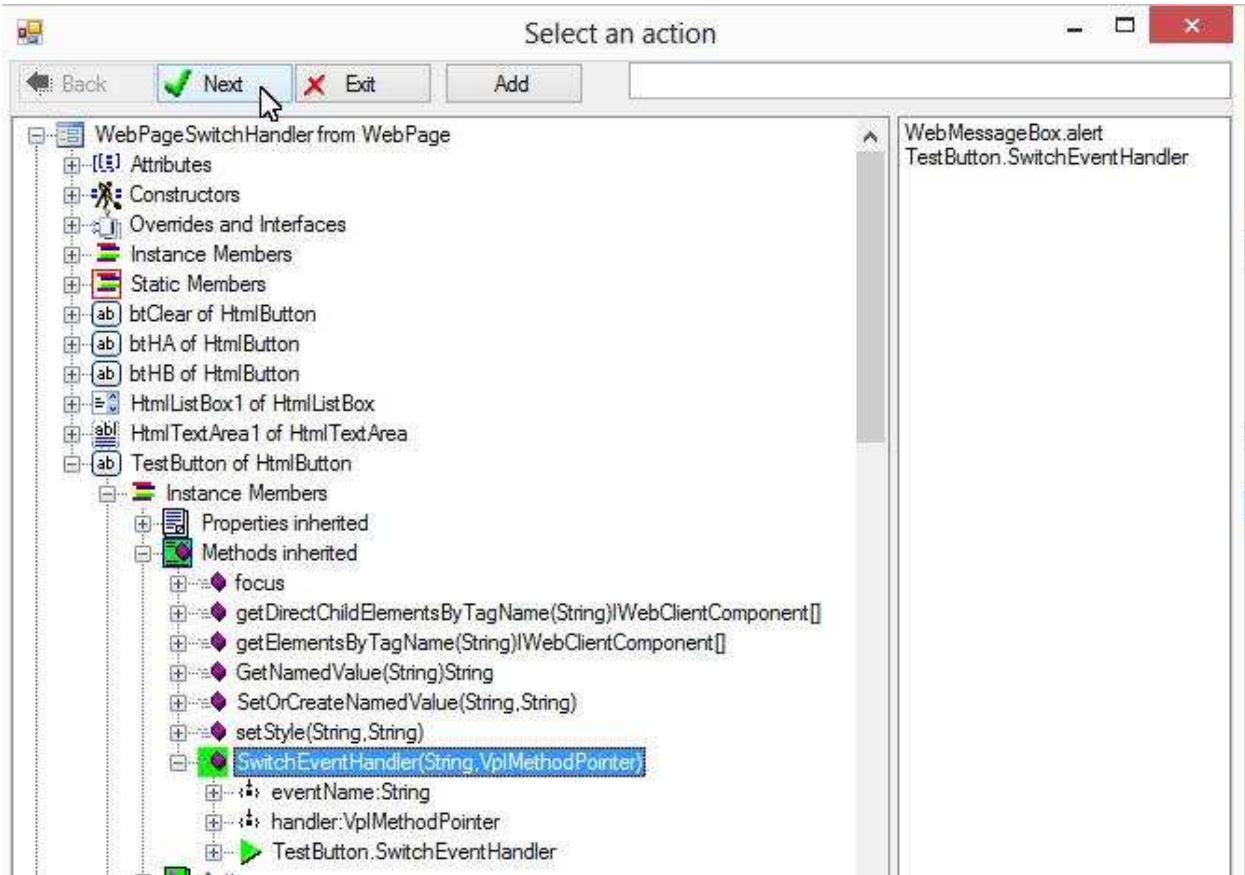
Switch handler at runtime (2)

Suppose when the user clicks button “Use Handler B”, we want to change the TEST button’s functionality to be adding a list item to a list box.

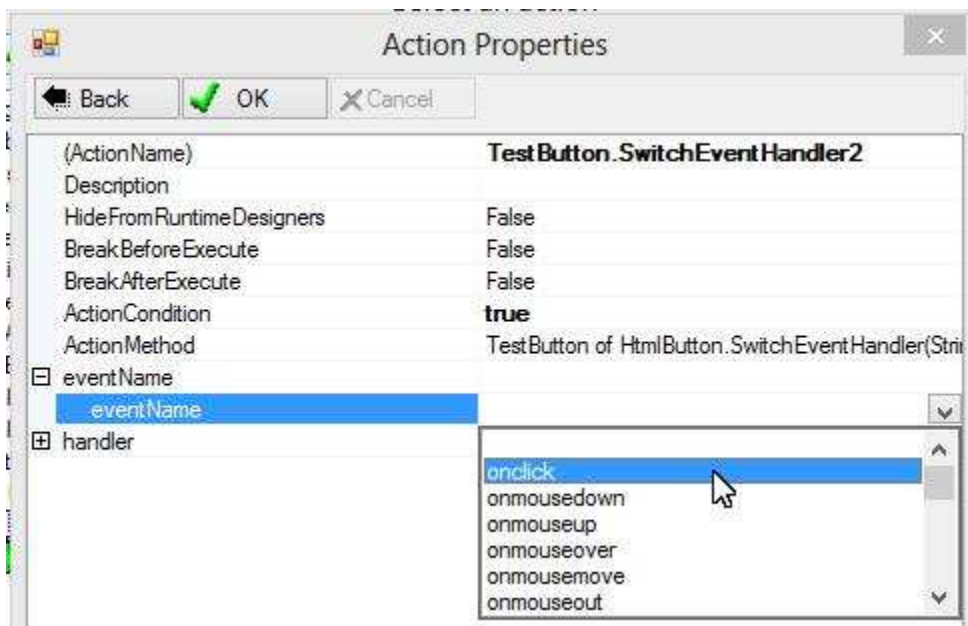
Right-click button “Use Handler B”; choose “Assign Action”; choose “onclick” event:



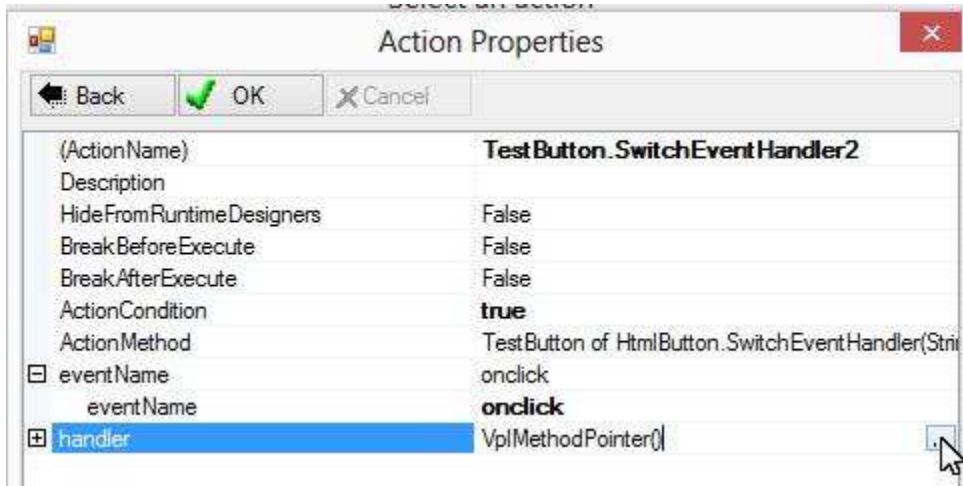
Choose “SwitchEventHandler” method of the TEST button:



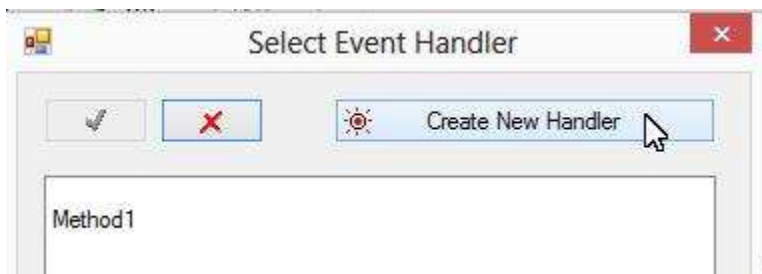
Choose "onclick" event for "eventName" of the action:



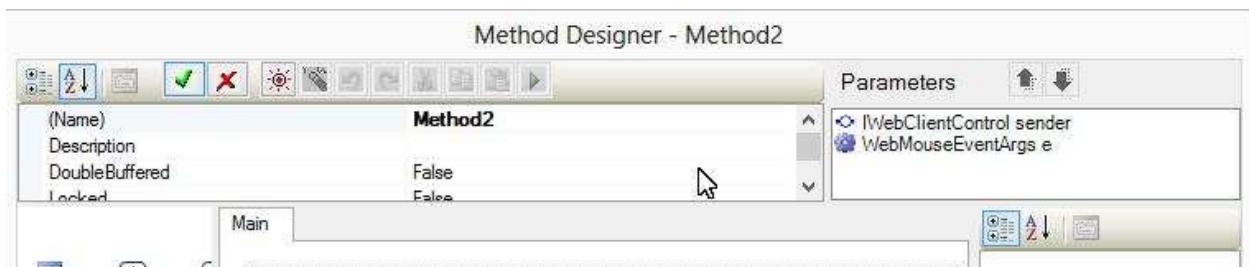
Click "..." to choose an event handler:



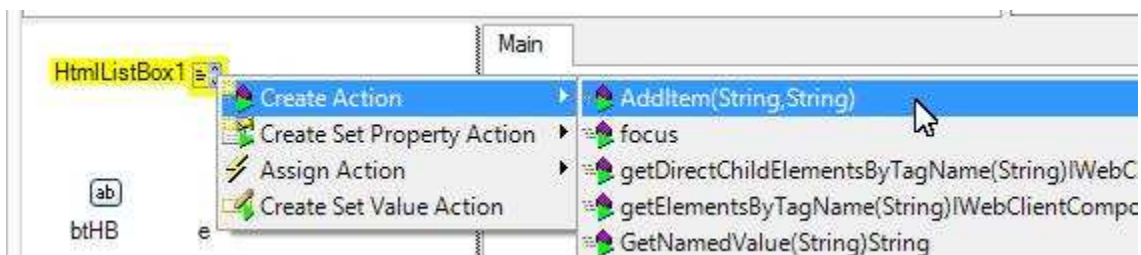
You may choose a previously created event handler. Here we click “Create new handler” to create a new event handler:



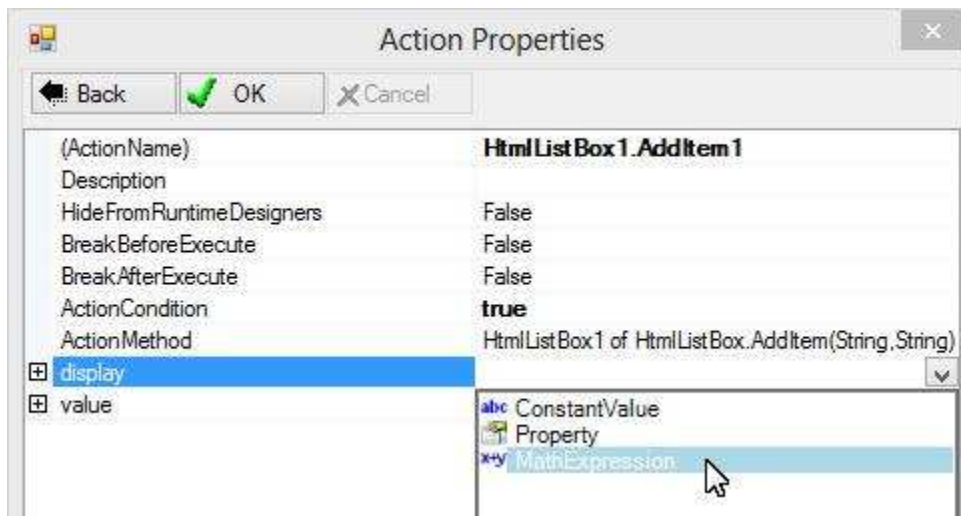
A Method Editor appears for us to add actions:



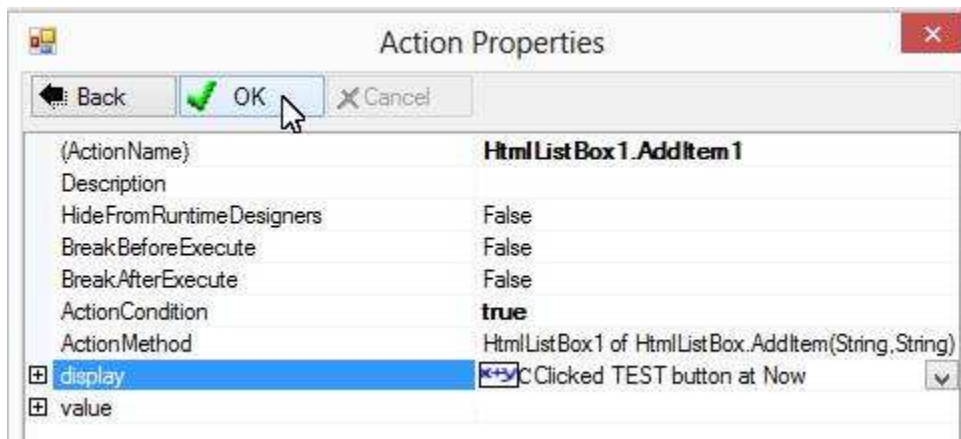
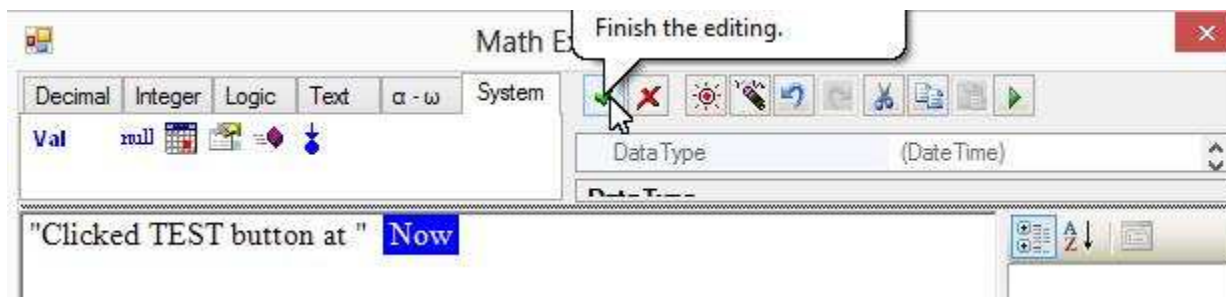
For this sample, we create an action to add a new list item:



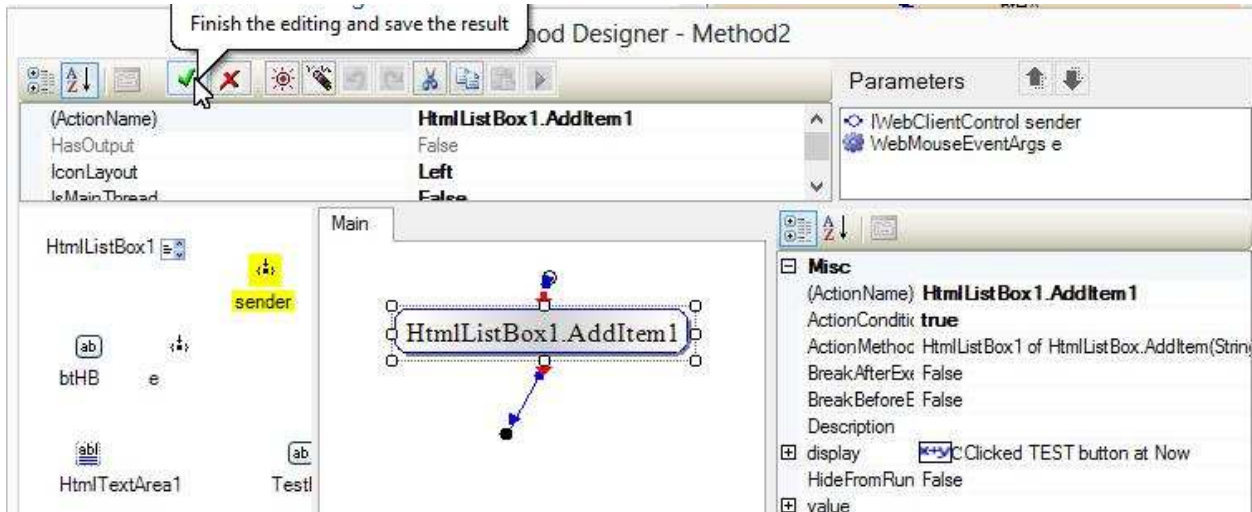
Use an expression to form what we want to display in the list:



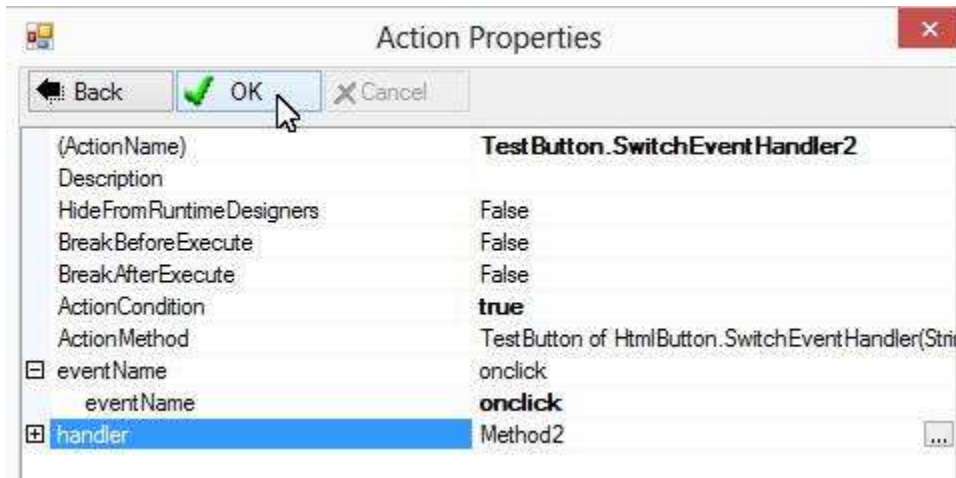
For this sample, we show current date time:



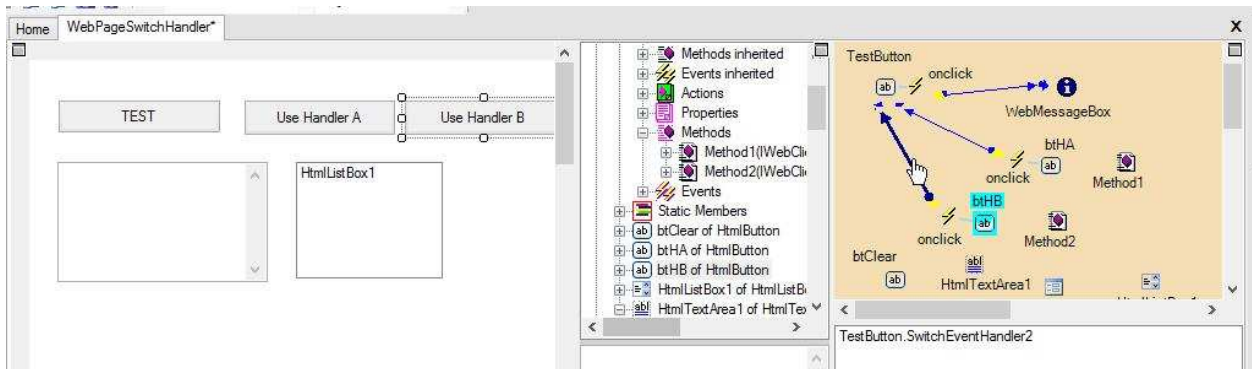
For this sample, we just need this one action:



Click OK to finish creating the SwitchEventHandler action:

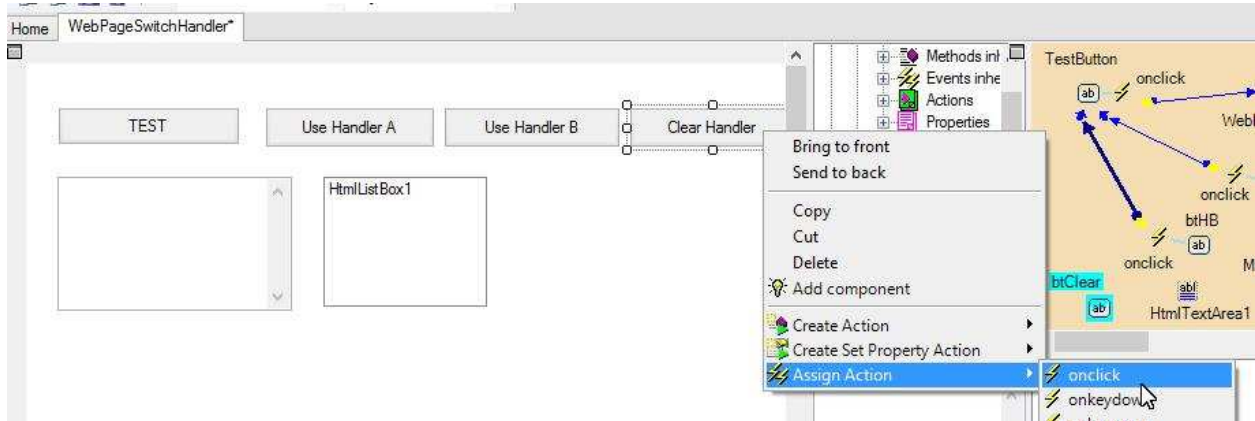


The action is created and assigned to the "User Handler B" button:

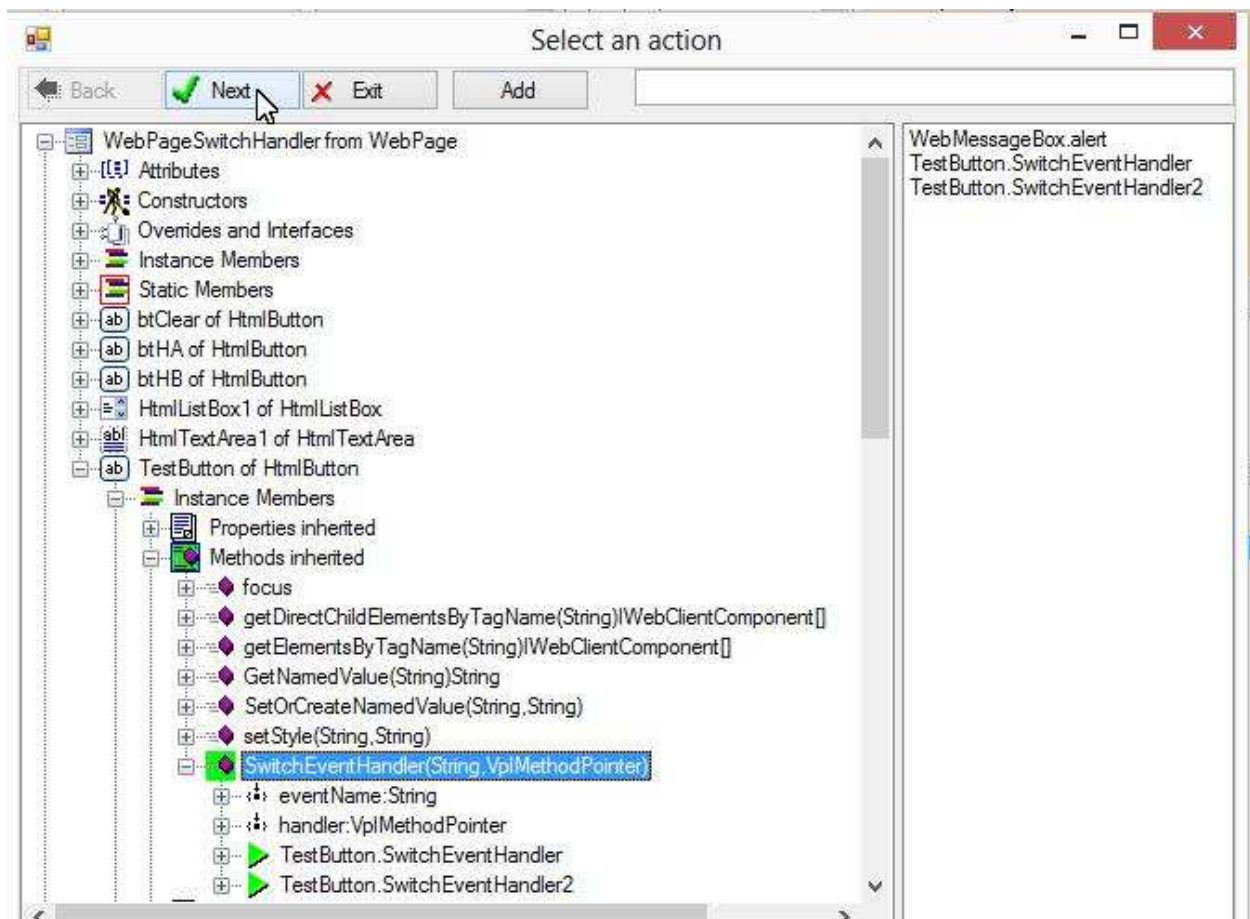


Remove Event Handler

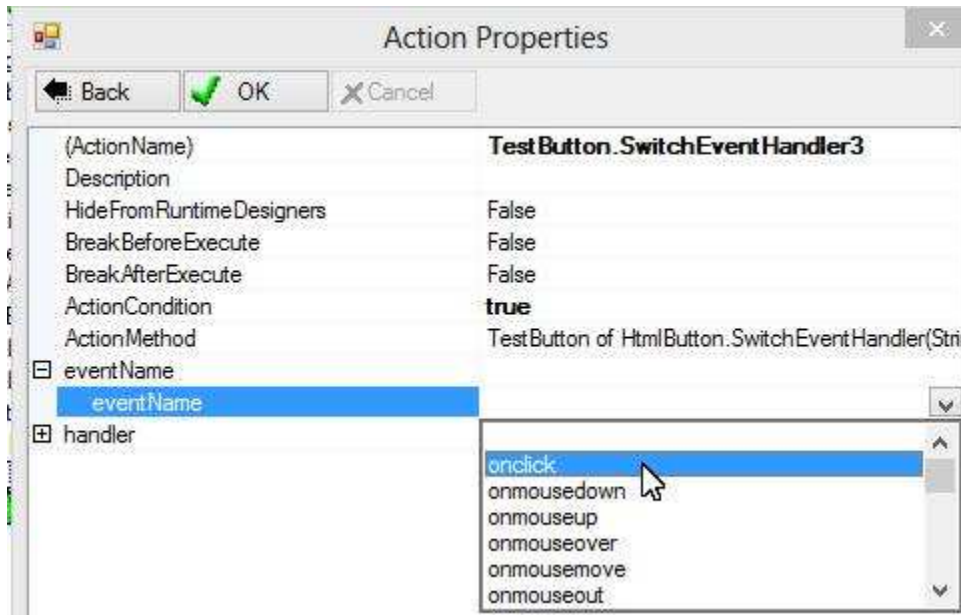
Removing event handler can be achieved by switching to an empty handler. Suppose we want to use a button to remove the TEST button's event handler. Right-click a "Clear" button; choose "Assign Action"; choose "onclick" event:



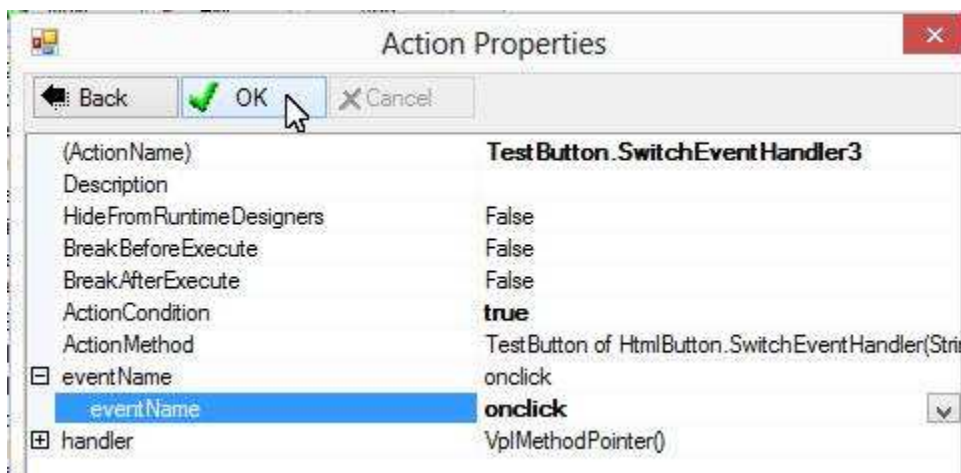
Select "SwitchEventHandler" method of the TEST button:



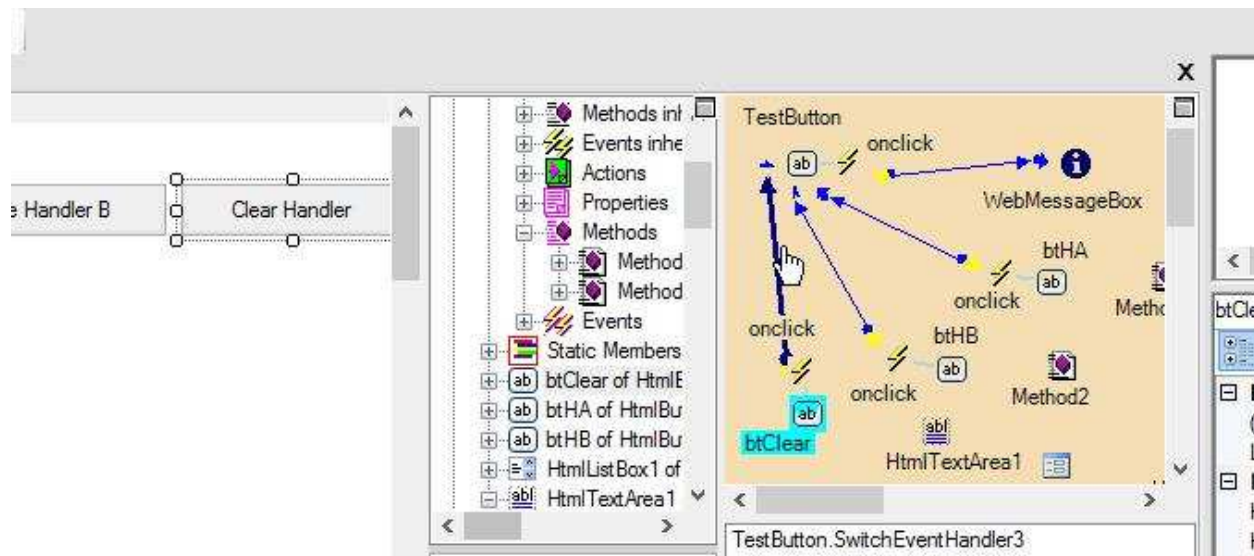
Choose "onclick" event for "eventName" of the action:



We do not need to set “handler” because our purpose is just removing existing handler. Click OK to finish creating this SwitchEventHandler action:

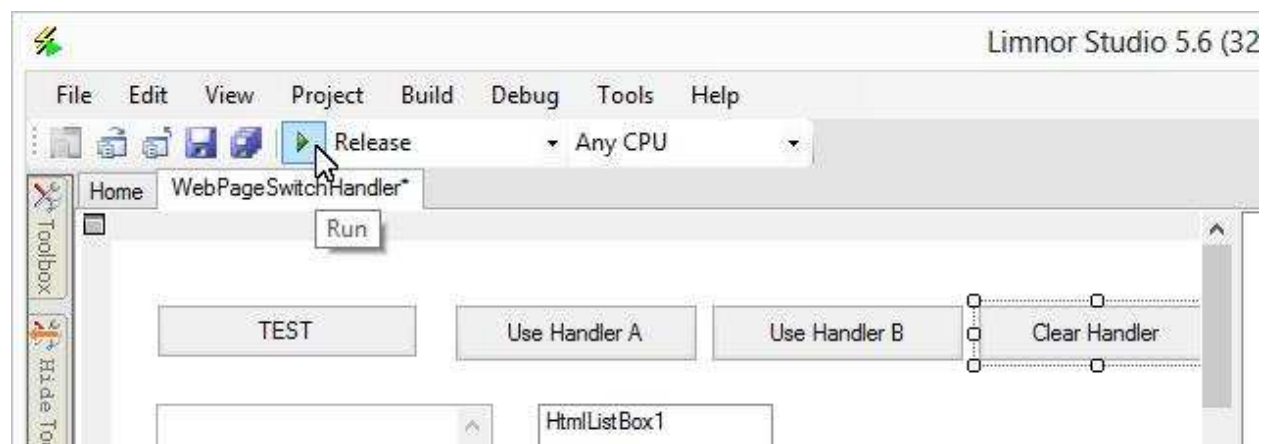


The action is created and assigned to the “Clear” button:

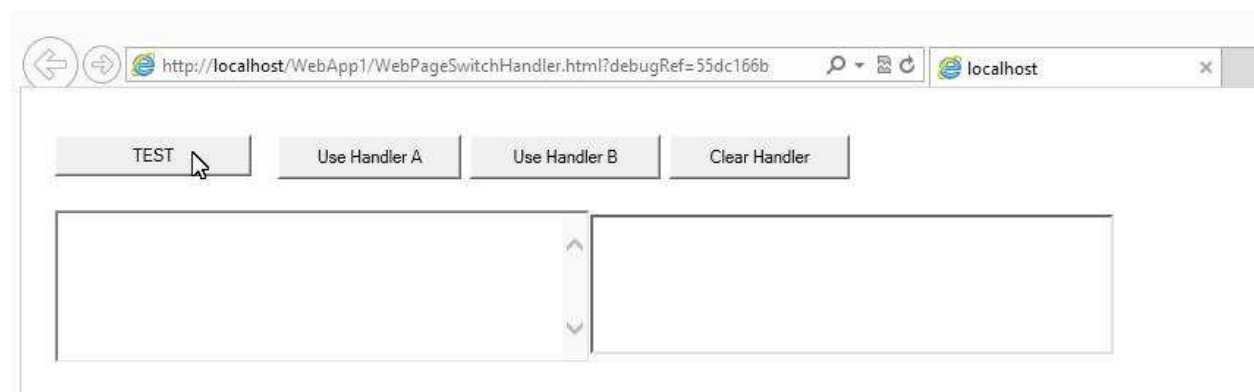


Test

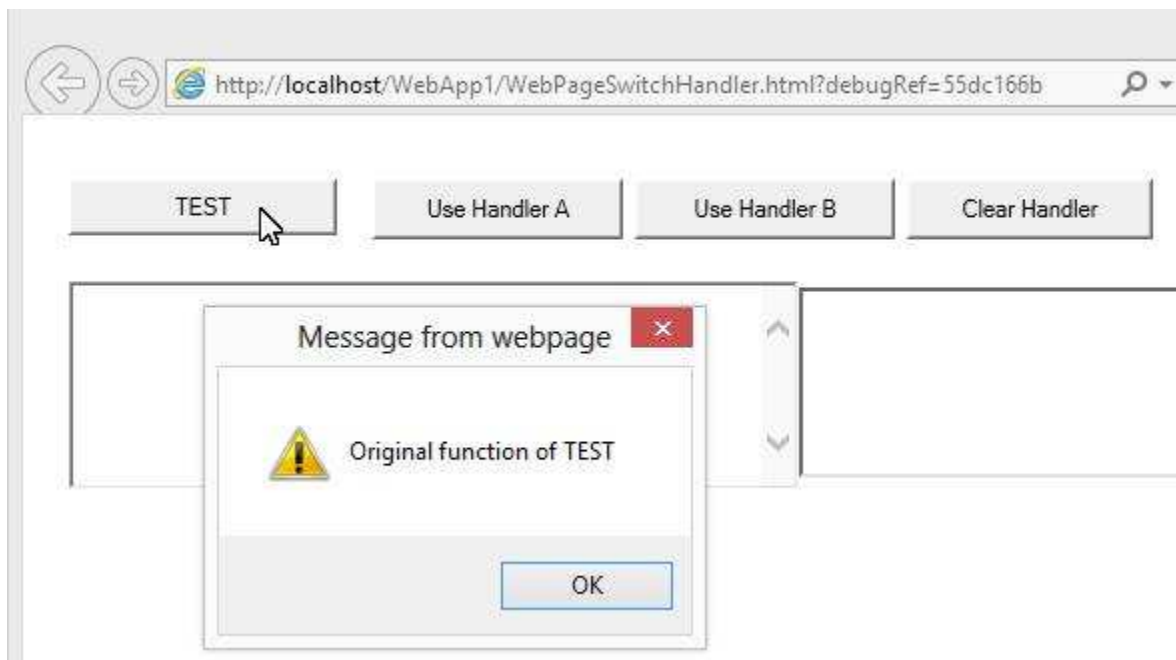
Now we may test our programming.



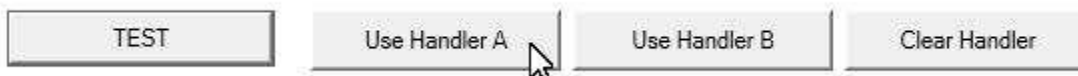
The sample page appears. Click the TEST button:



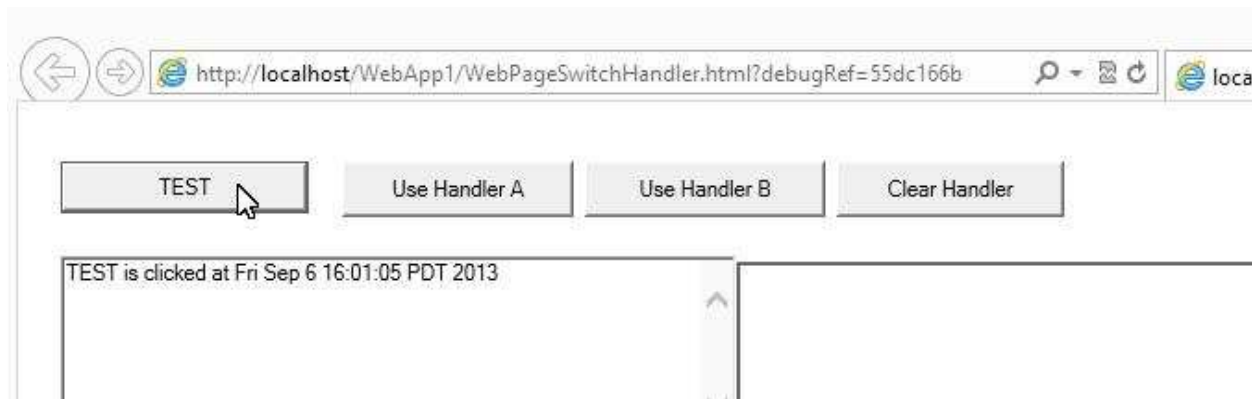
A message box appears. This is the action assigned at design time:



Click button "Use Handler A":



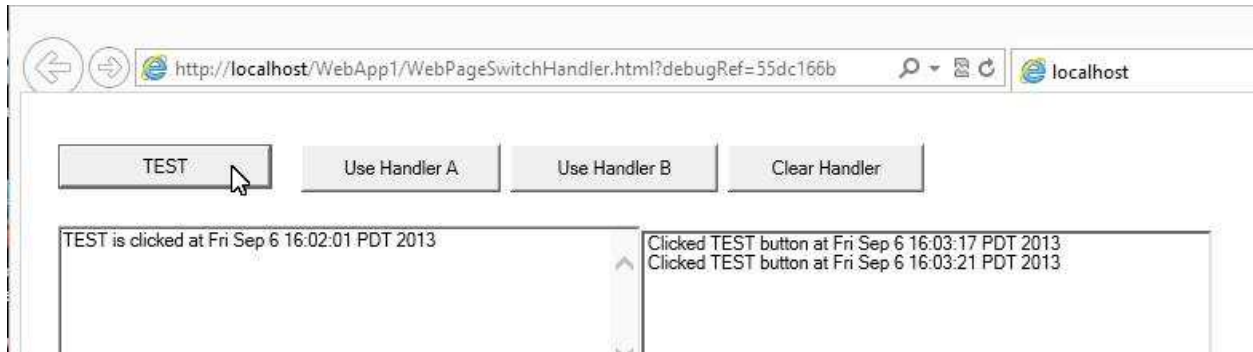
Now clicking TEST button will show a message in the text box:



Click button "Use Handler B":



Now one click of the TEST button will add an item to the list box:



Click button "Clear Handler":



Now clicking the TEST button will do nothing.

Feedback

Please send your feedback, comment, and suggestions to support@limnor.com.