

# Use AutoItX

---

## Contents

Introduction .....	1
Use AutoItX in 32-bit programs .....	1
Include 32-bit AutoItX .....	2
Add 32-bit AutoItX Wrapper .....	3
Execute AutoItX functions.....	6
Use AutoItX in 64-bit programs .....	9
Include 64-bit AutoItX .....	9
Add 64-bit AutoItX wrapper.....	9

## Introduction

Since AutoItX (<http://www.autoitscript.com/site/>) is made in unmanaged C++, to use it in Limnor Studio we need to make a wrapper for it. You may download a wrapper from <http://www.limnor.com/studio/AutoItXDotNet.zip>

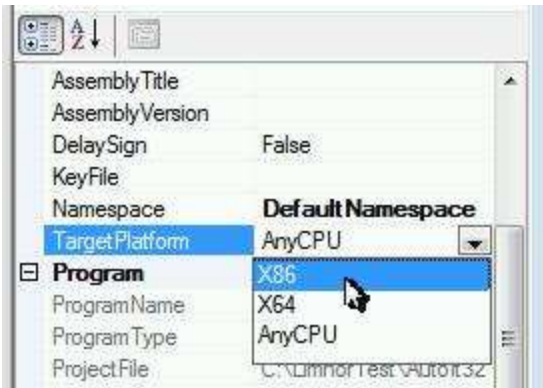
It contains two files:

- AutoItXDotNet.dll – for 32-bit programs
- AutoItXDotNet64.dll – for 64-bit programs

Each DLL contains a class named AutoItX. It exposes static functions as AutoItX interface.

## Use AutoItX in 32-bit programs

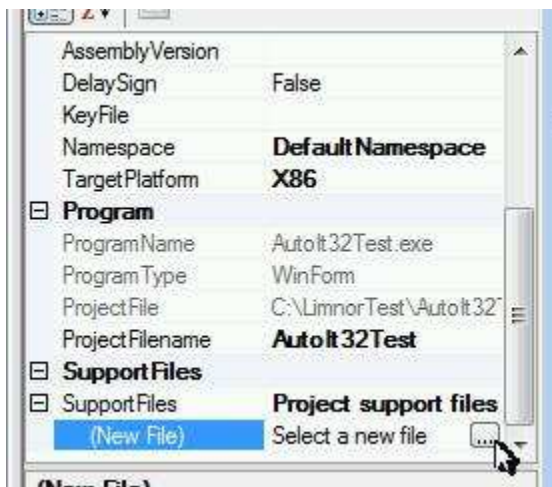
Suppose we create a Windows Form project. We set its Target Platform to x86 so that it will generate a 32-bit program:



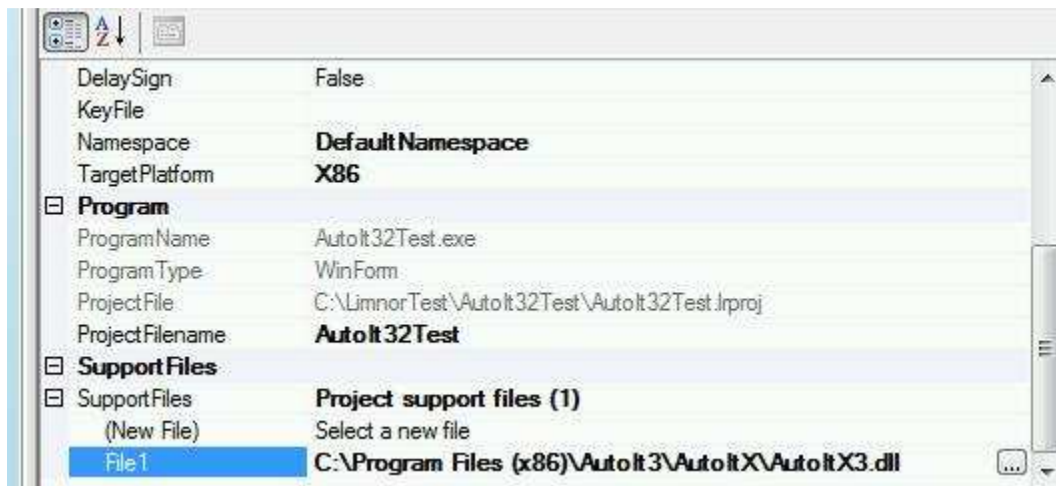
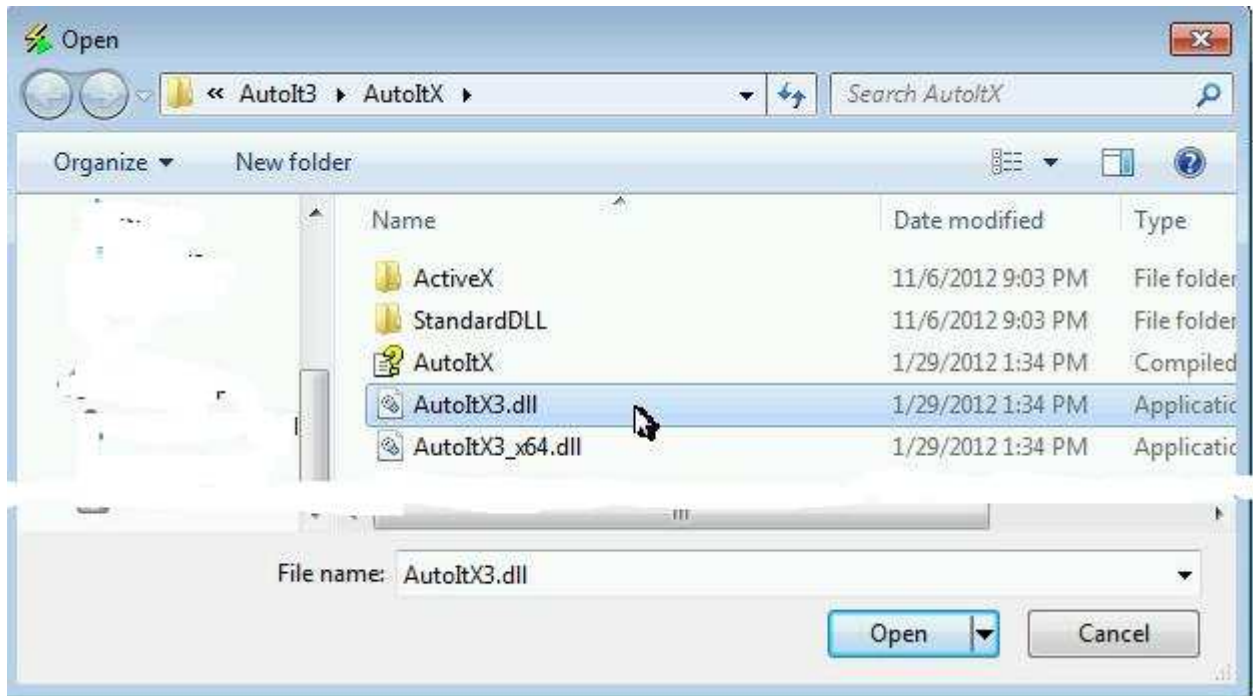
For more information about Target Platform, see [http://www.limnor.com/studio\\_x86.html](http://www.limnor.com/studio_x86.html)

### Include 32-bit AutoItX

We need to tell the project where to find the 32-bit AutoItX. We do it through “SupportFiles” property:

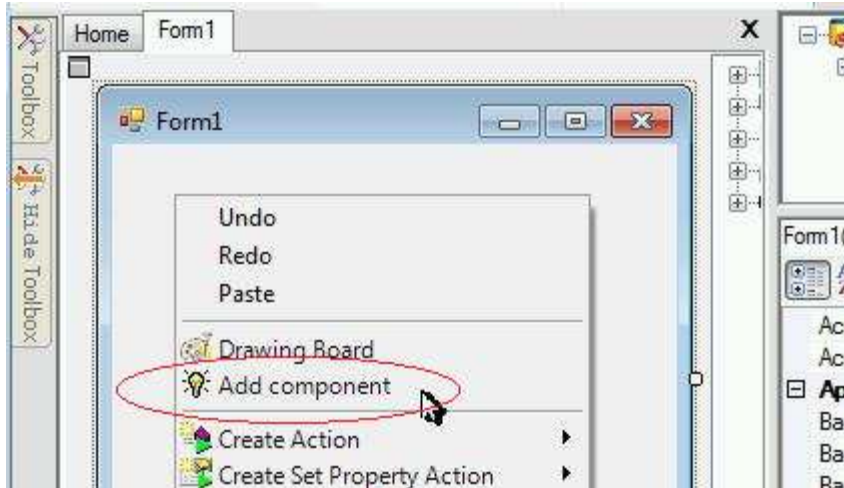


Select AutoItX.DLL from your AutoIt installation folder:

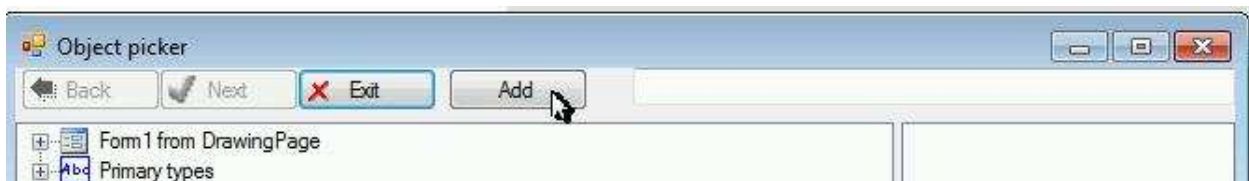


## Add 32-bit AutoItX Wrapper

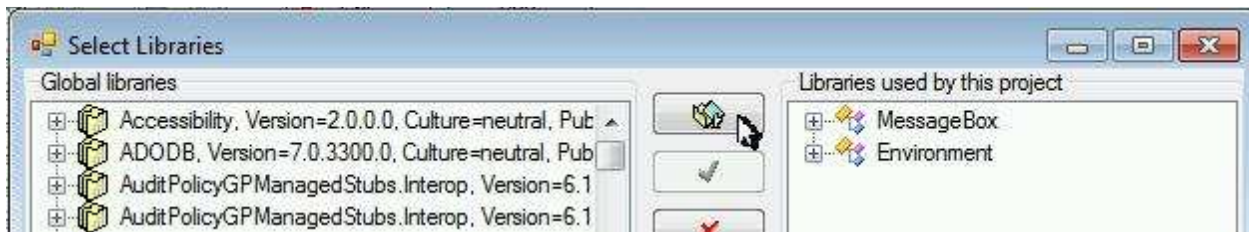
Right-click the form; choose "Add component":



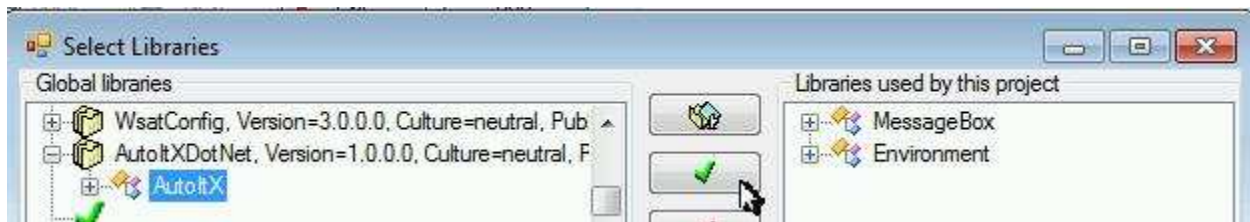
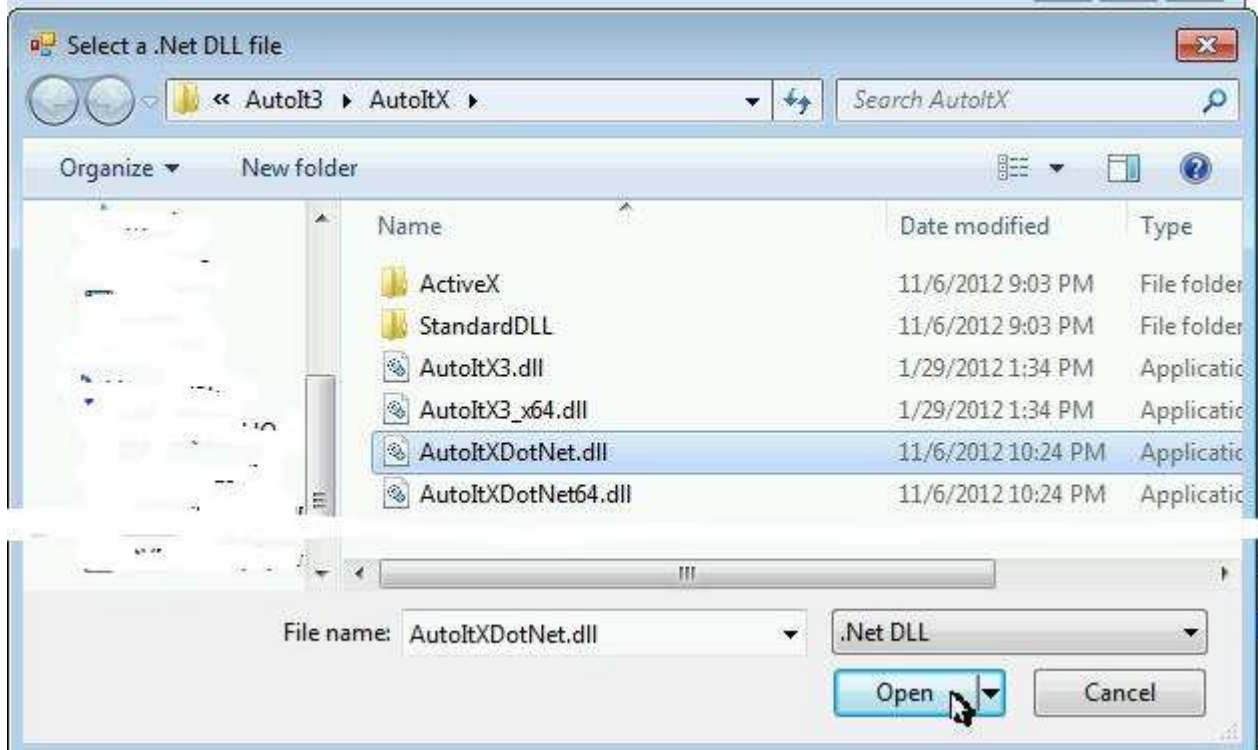
Click Add to select component:



Click File button to locate a DLL file containing the component we want:



AutoltXDotNet.DLL is the 32-bit wrapper:

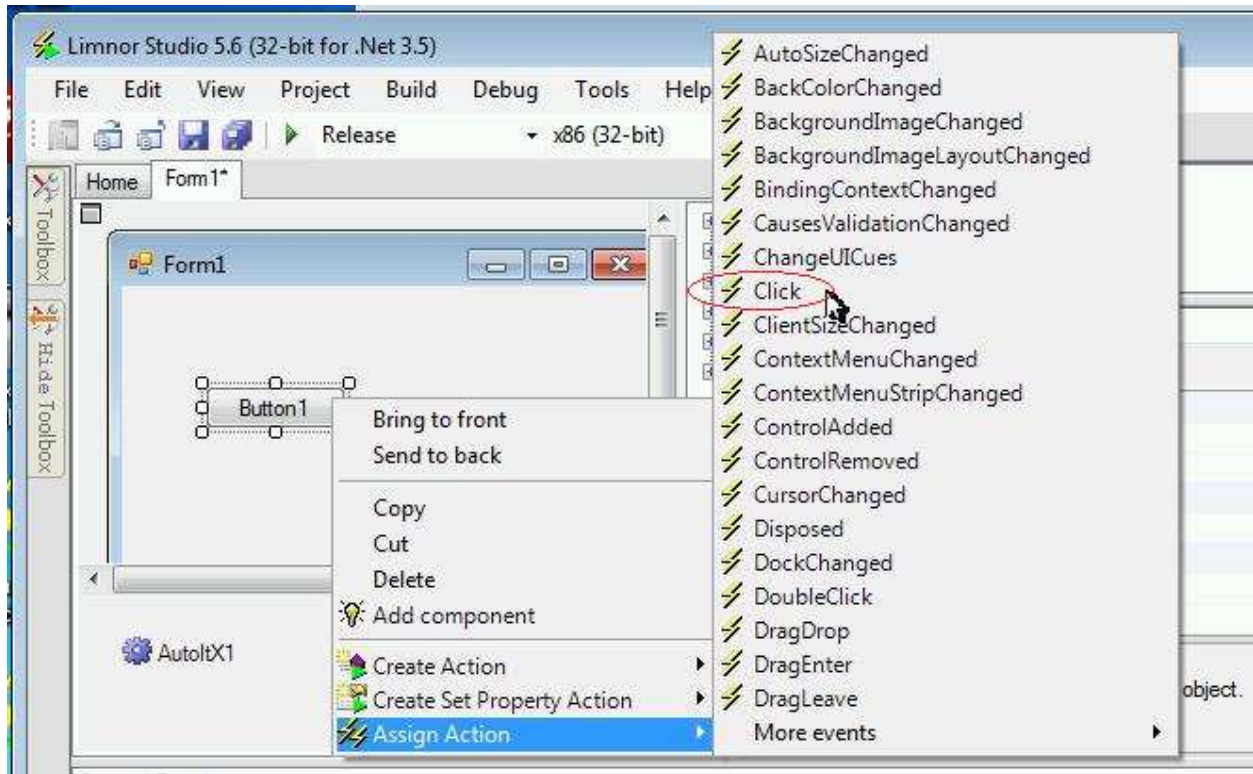


A wrapper component for AutoItX appears in the designer:



## Execute AutoItX functions

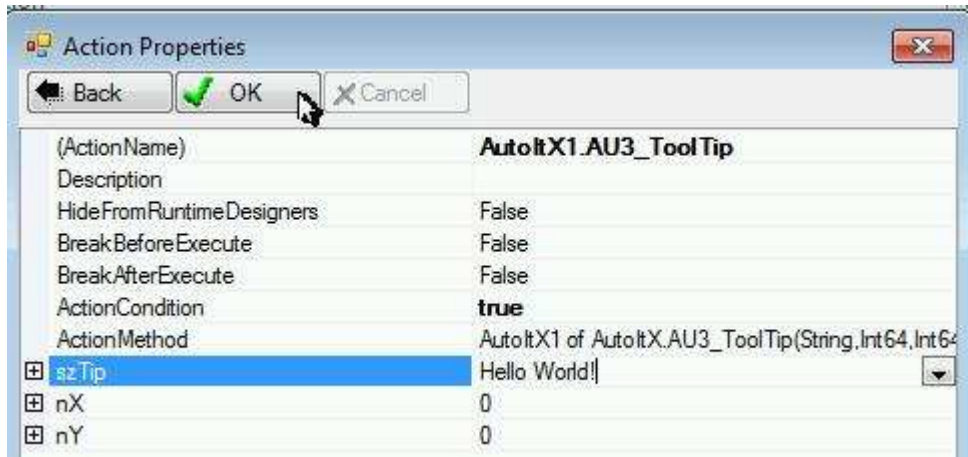
Let's use a button to trigger execution of an AutoItX function.



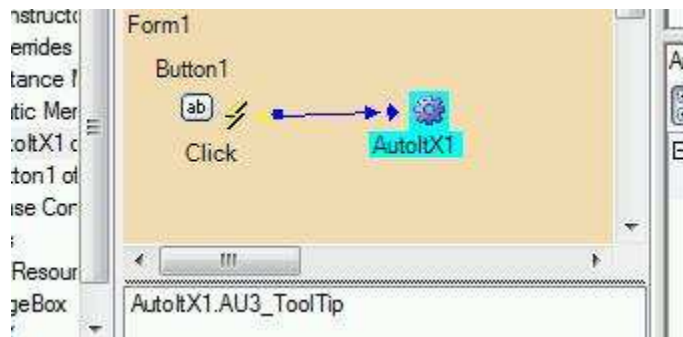
You can see that all AutoItX functions are listed under “Static methods”:



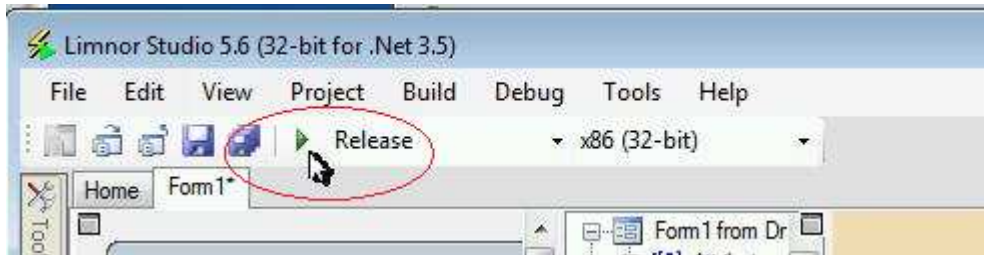




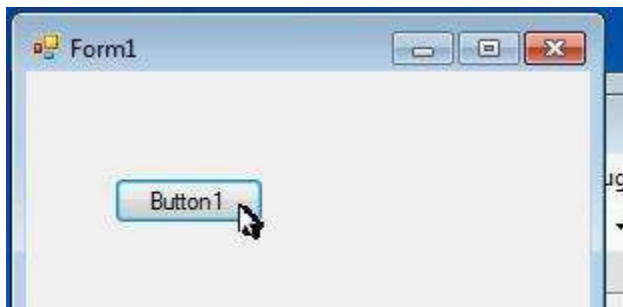
A ToolTip action is created and assigned to the button:



We may test the application now:

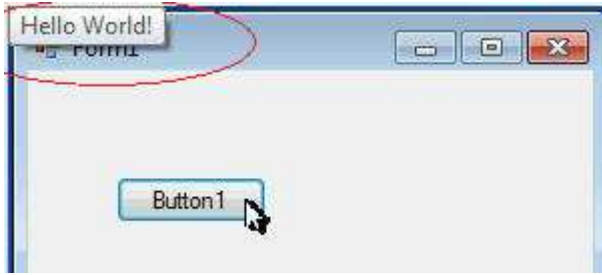


The form appears. Click the button:



A tool tip message appears:



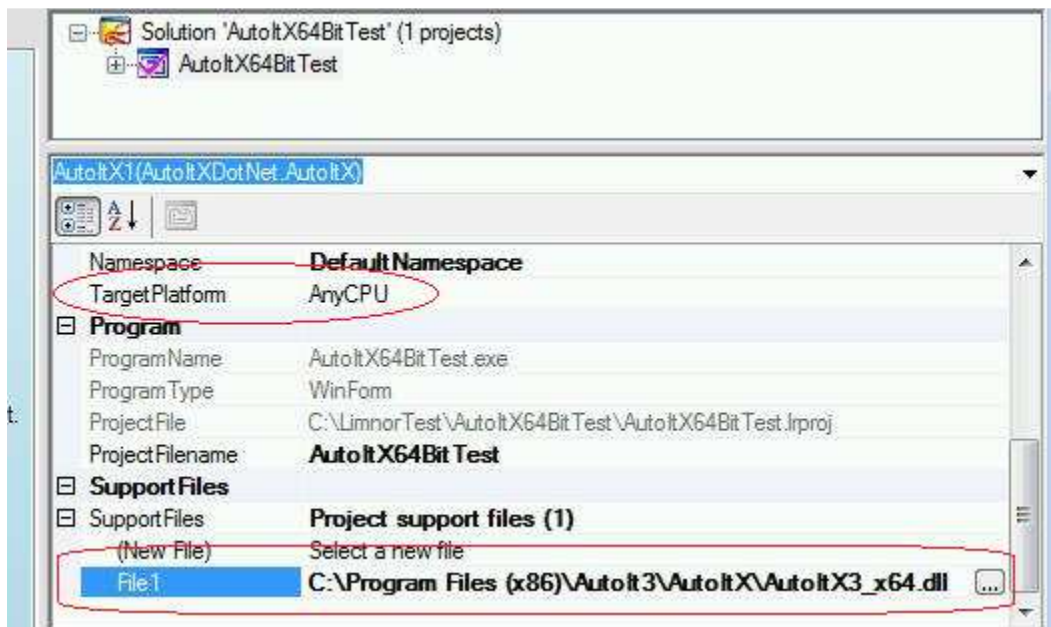


## Use AutoItX in 64-bit programs

The programming is the same for 32-bit and 64-bit programs, only the DLL files to be used are different.

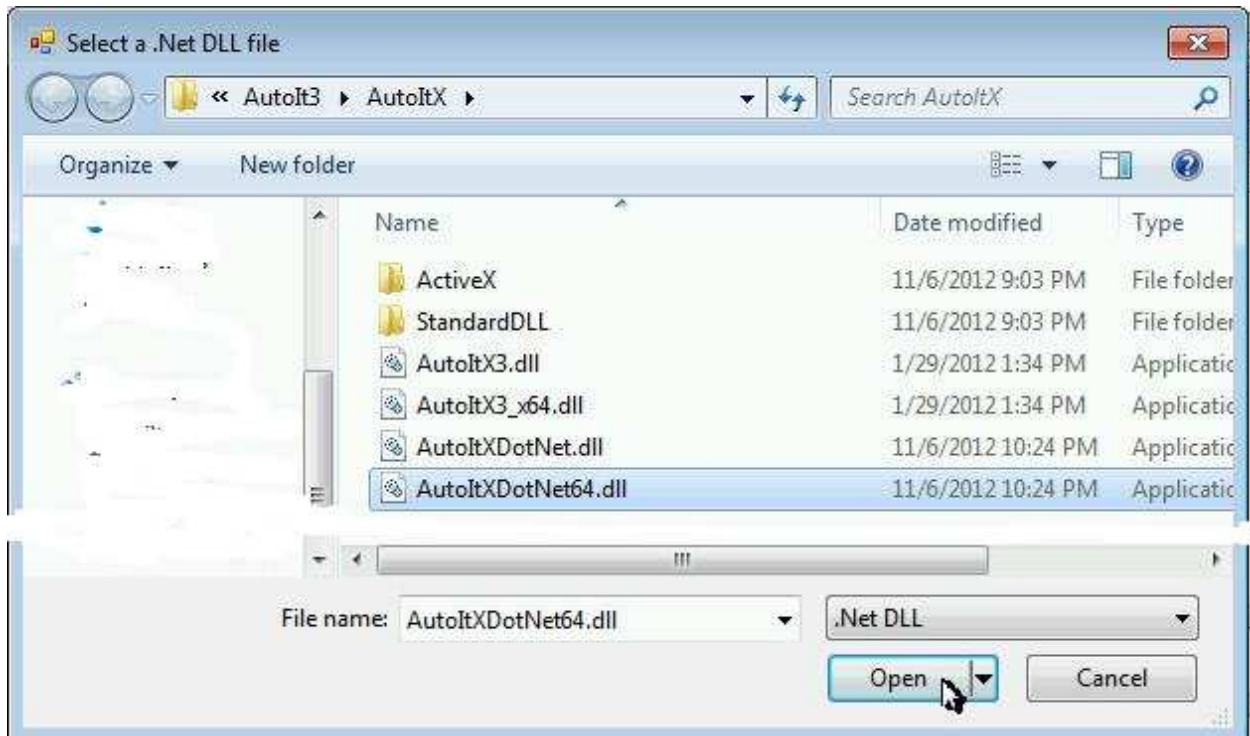
Suppose your computer is 64-bit. Create a new Windows Form project. Leave its Target Platform as AnyCPU.

## Include 64-bit AutoItX



## Add 64-bit AutoItX wrapper

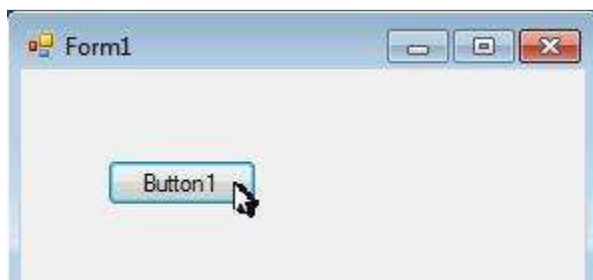
Follow the same procedure for adding a wrapper component, but choose the 64-bit version DLL:



We still use a ToolTip action as an example:



Run the project. Click the button:



A tool tip appears:

