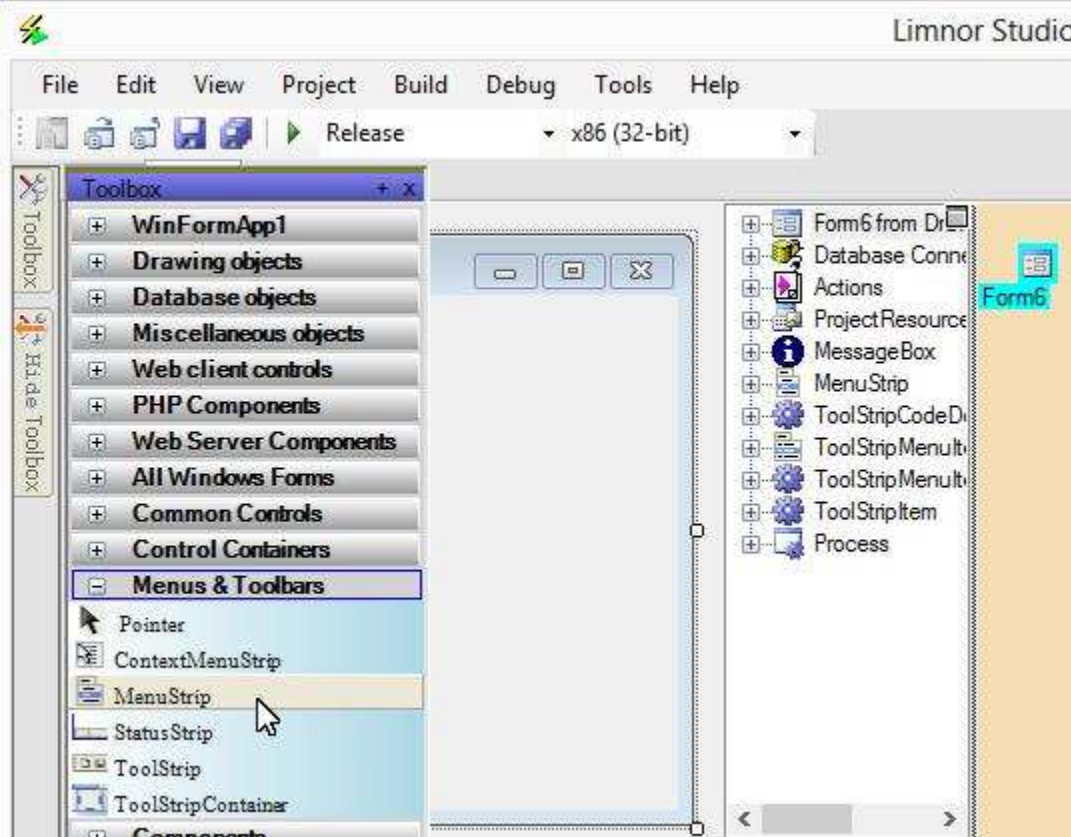


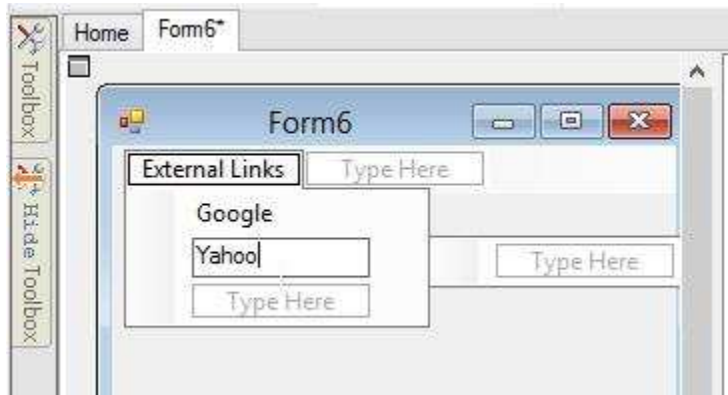
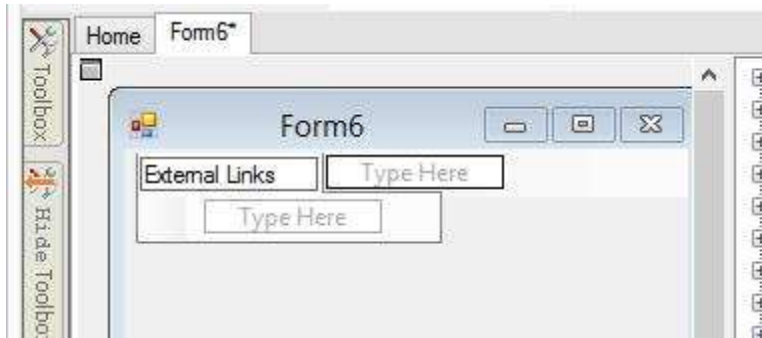
Use Menu to Show Web Sites

Contents

Add menu strip to form	1
Add Process for execute external programs.....	2
Assign actions to menus	3
Test.....	10
Feedback.....	12

Add menu strip to form





Add Process for execute external programs

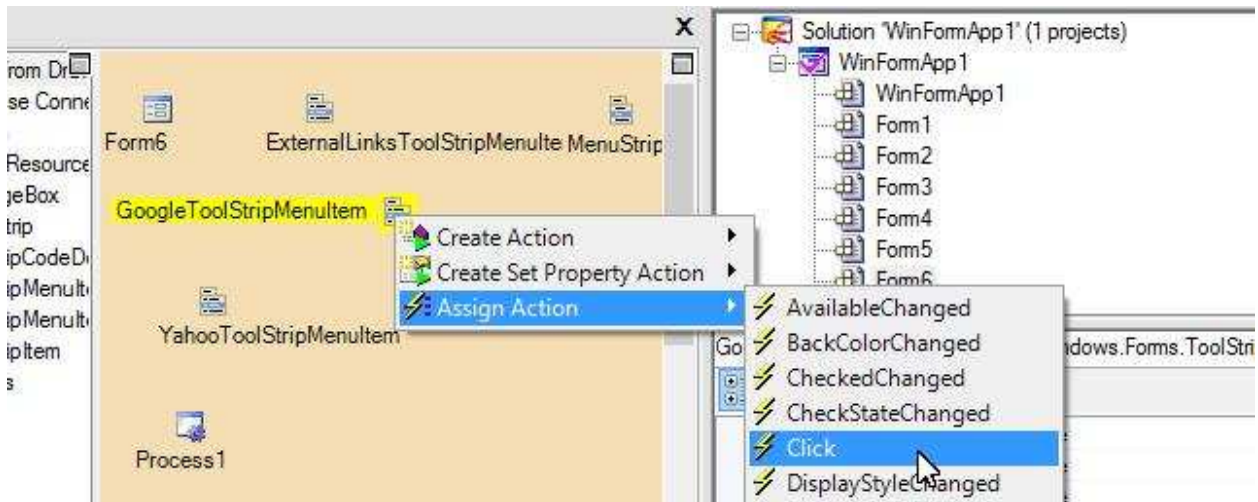
The screenshot shows the Visual Studio IDE with the following components visible:

- Toolbox (Left):** The 'Components' section is expanded, showing various components. The 'Process' component is highlighted by the mouse.
- Form Designer (Right):** The 'Form6' window is shown with a menu strip containing 'ExternalLinks ToolStripMenuItem'. The 'Process' component is being added to this menu item.
- Component List (Middle-Right):** A list of components is shown, including 'Form6 from Dr...', 'Database Conne...', 'Actions', 'ProjectResource', 'MessageBox', 'MenuStrip', 'ToolStripCodeD...', 'ToolStrip Menu...', 'ToolStrip Menu...', 'ToolStripItem', and 'Process'.
- Status Bar (Bottom):** The status bar displays the path: 'n:ExternalLinks ToolStripMenuItem > n:ToolStripMenuItem2147483646 > n:Google ToolStripMenuItem'.

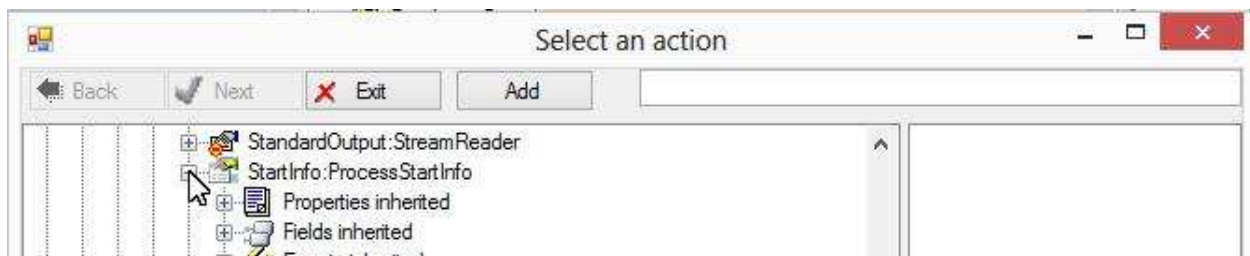
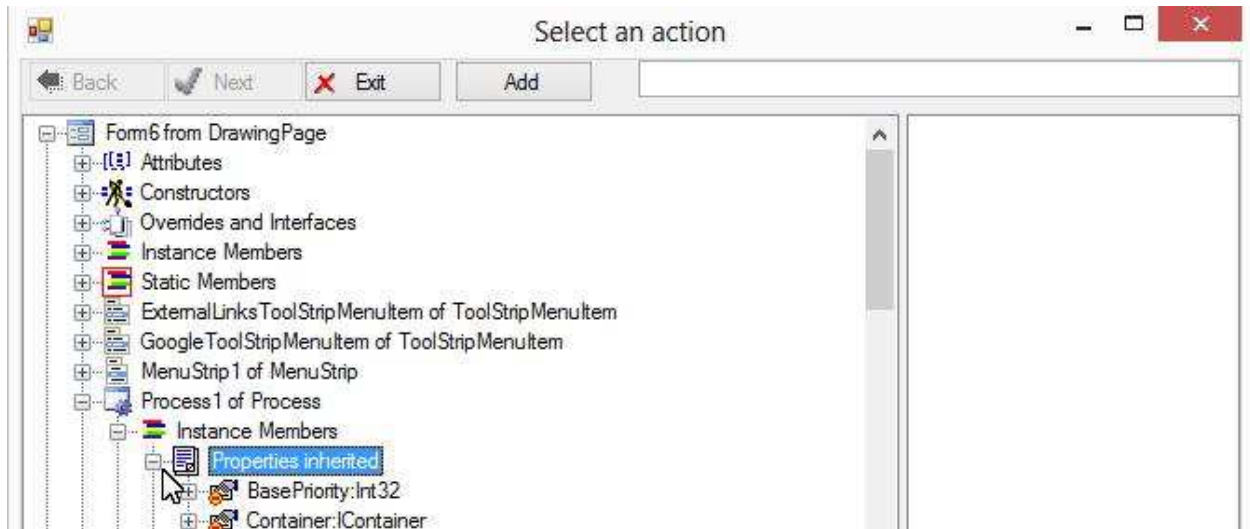
A Process component can be used to execute external programs, such as EXE files. It can also be used to open files which have registered “Open with” programs. Since most Windows computers have registered web URL with web browsers, we may use it to access web links.

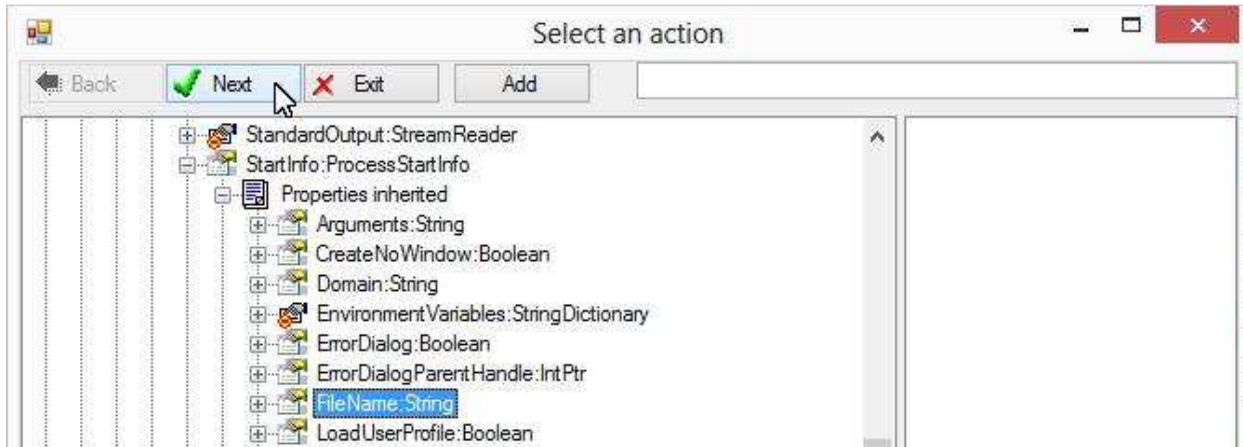
Assign actions to menus

Right-click a menu item; choose “Assign Action”; choose “Click” event:

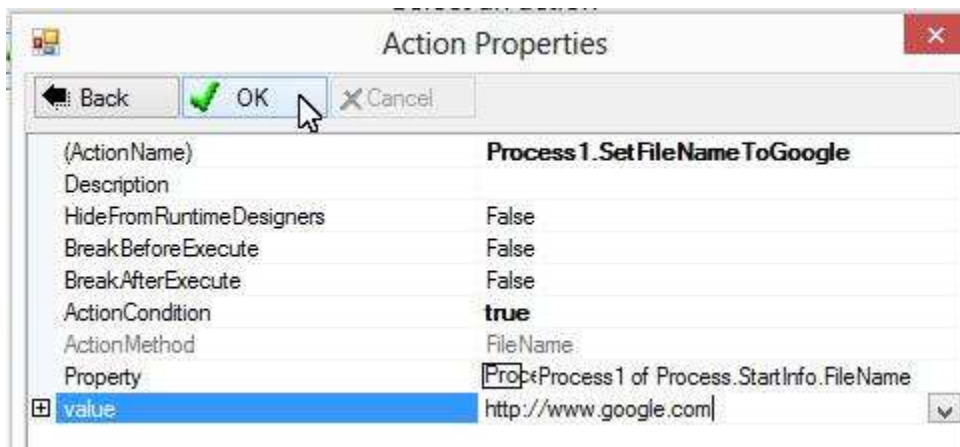


Select “FileName” property of the StartInfo property of the Process component:

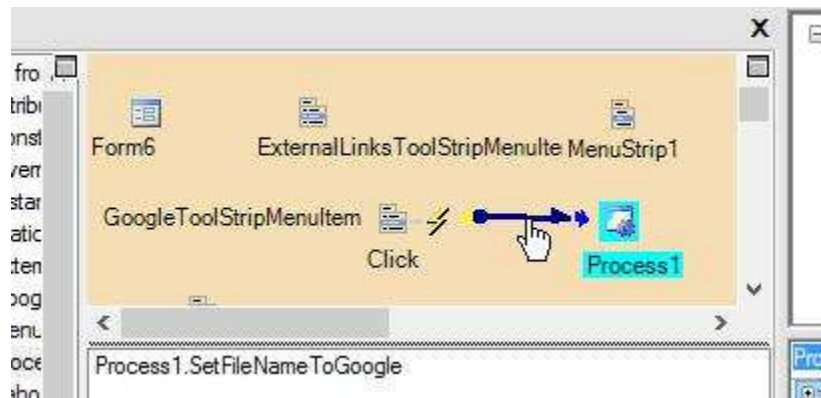




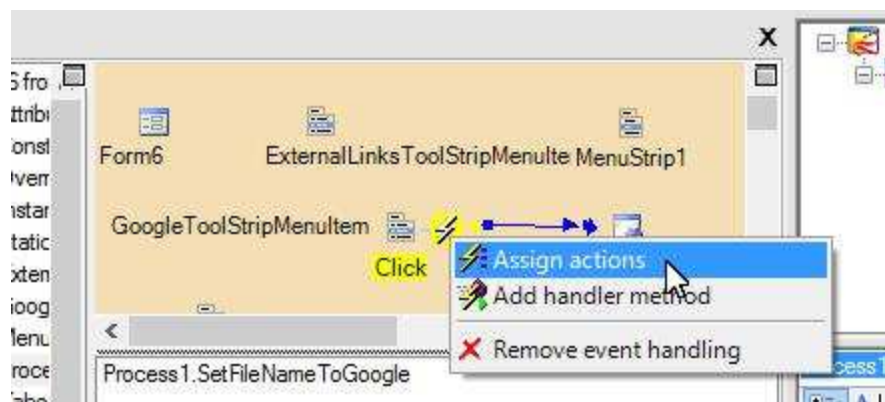
Specify Google web site URL:



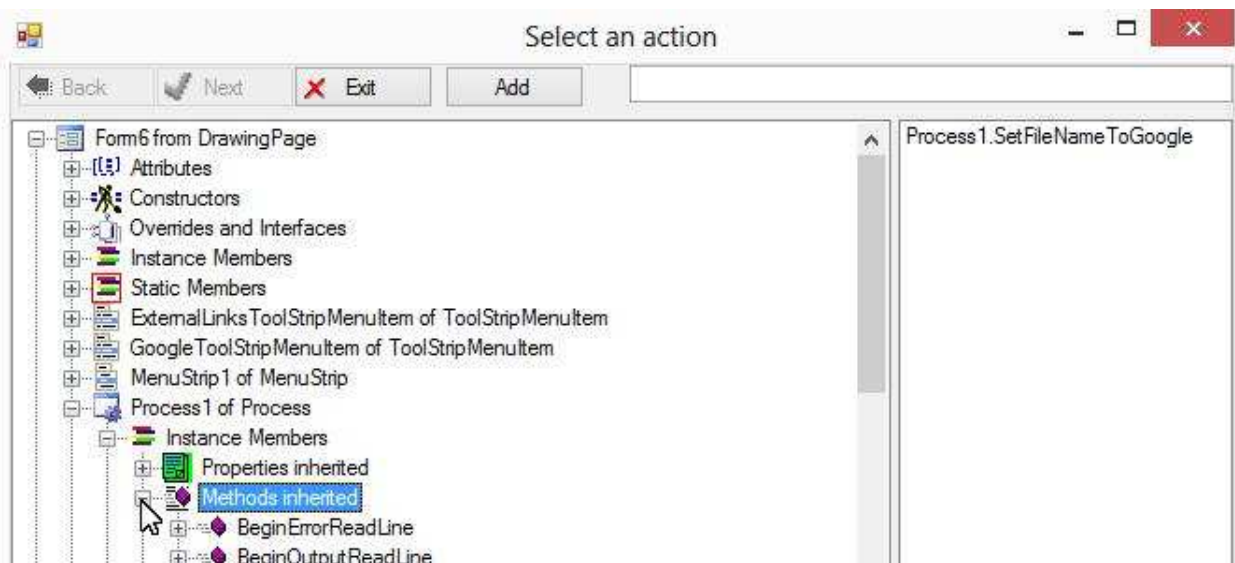
The action is created and assigned to the Click event:

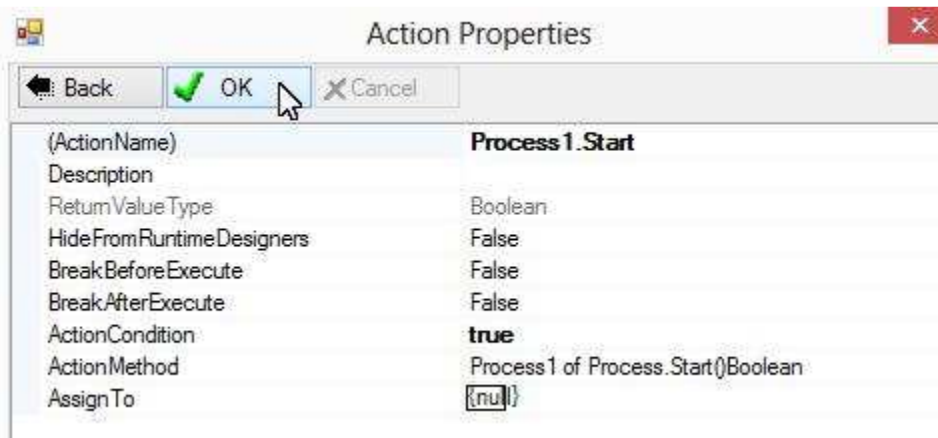
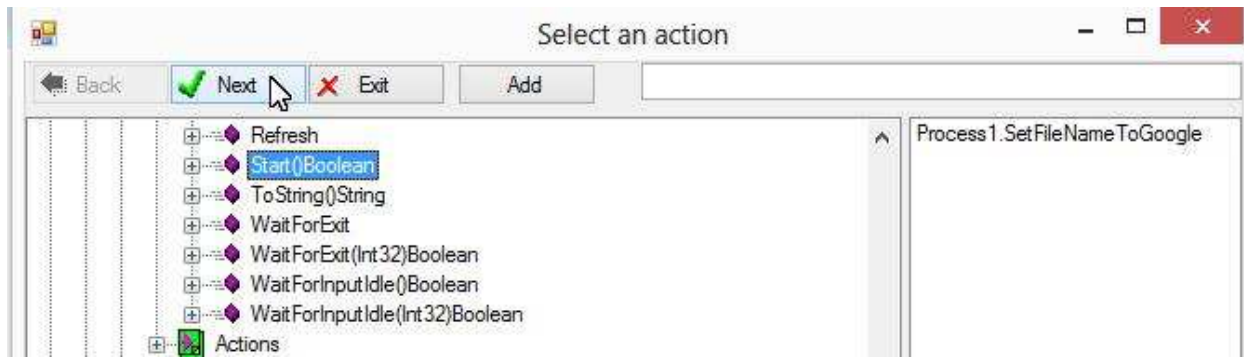


We need to assign a Start action of the Process to the same event. Right-click the event; choose “Assign actions”:

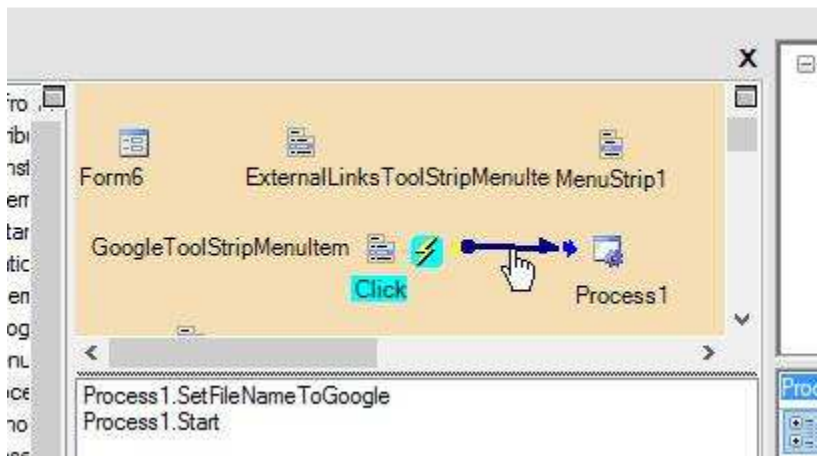


Choose “Start” method:

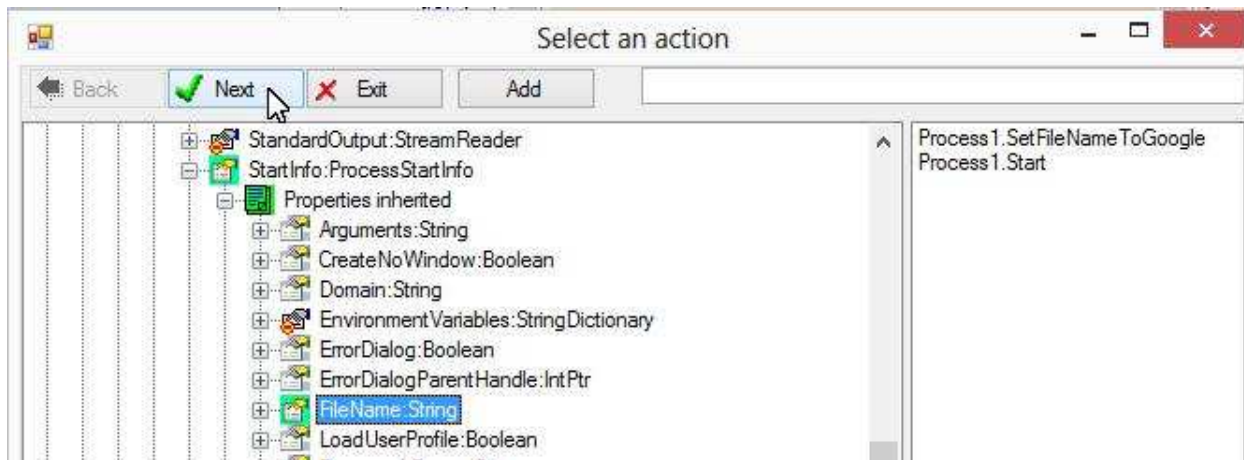
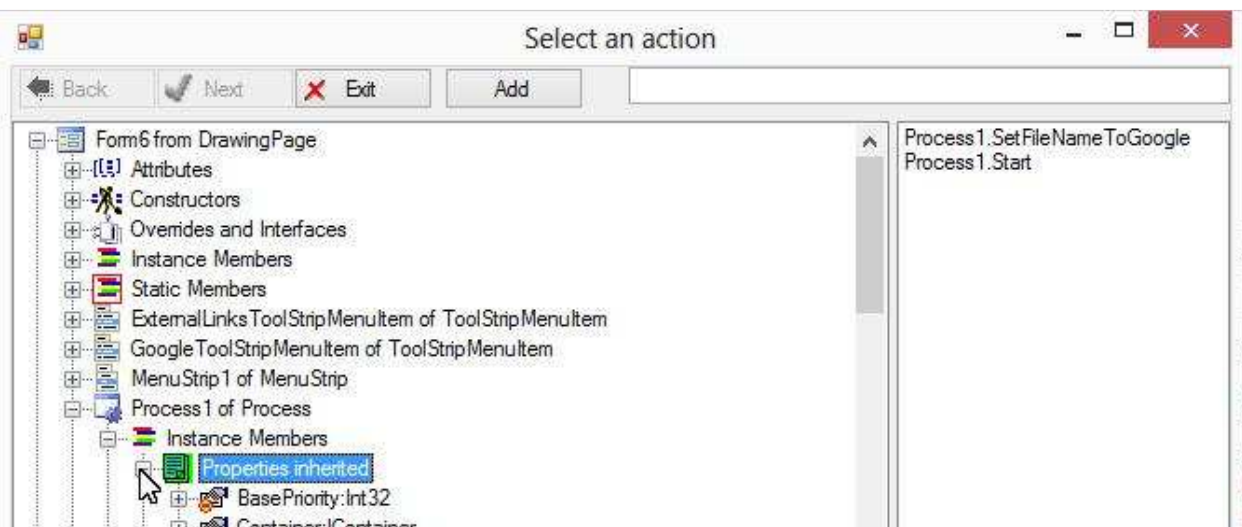
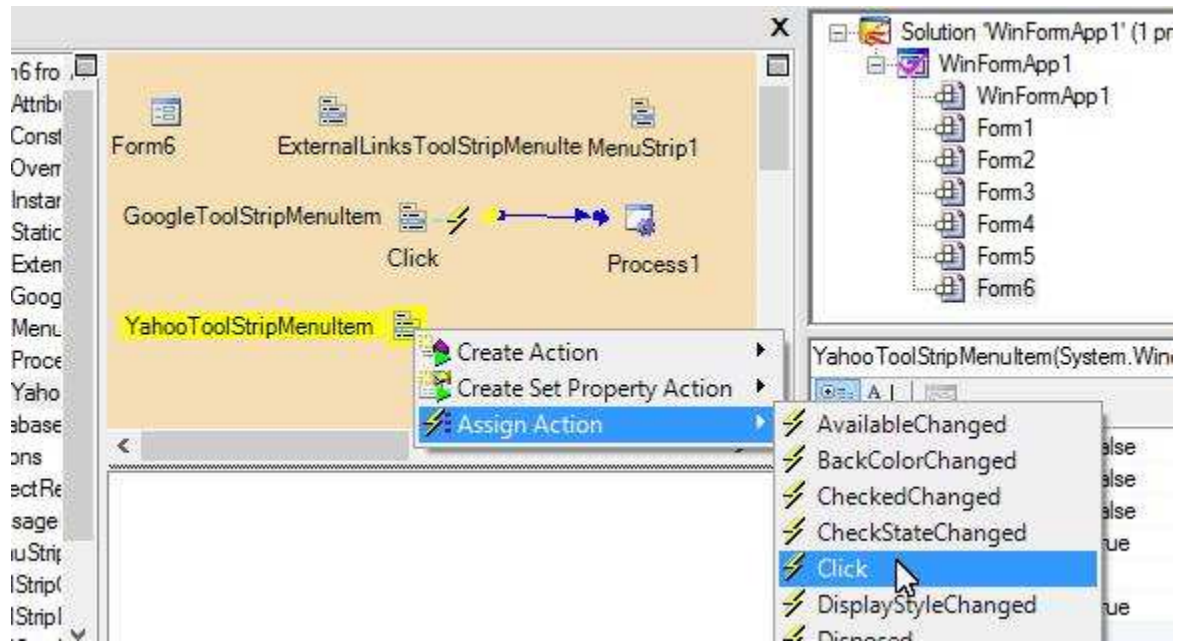




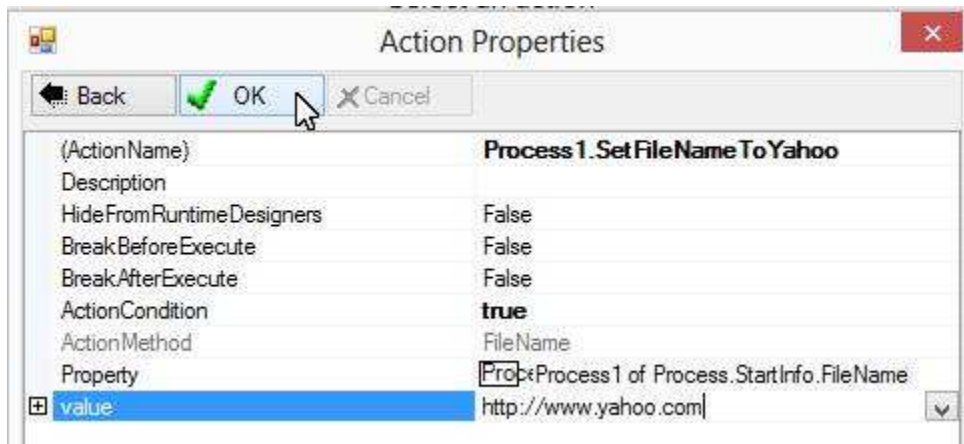
The action is created and assigned to the Click event:



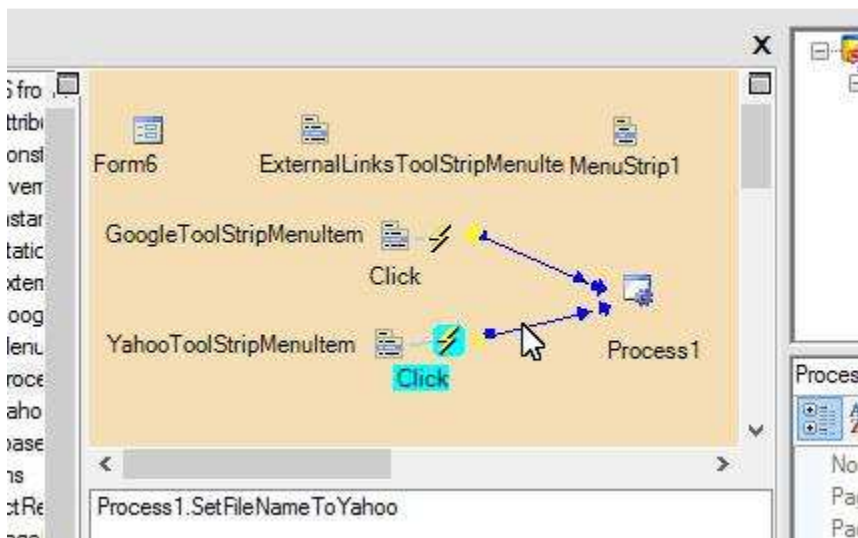
We'll repeat the above programming for another menu item.



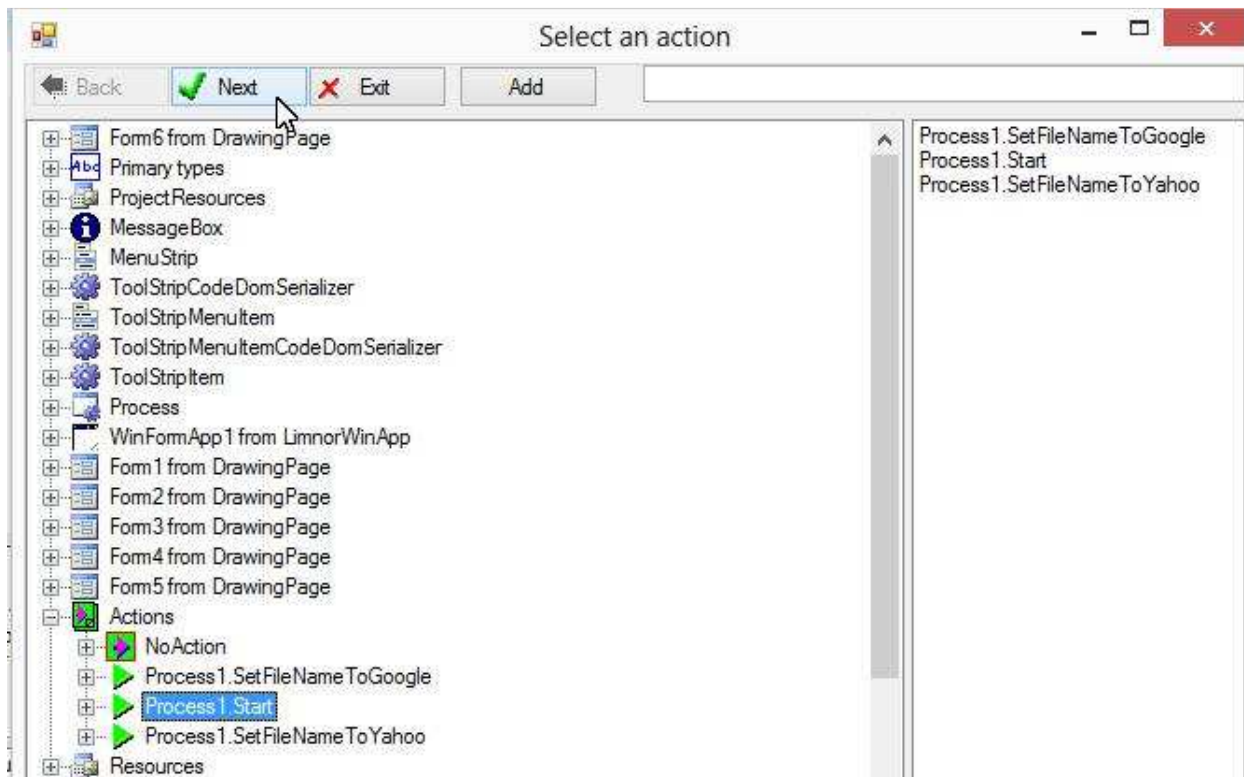
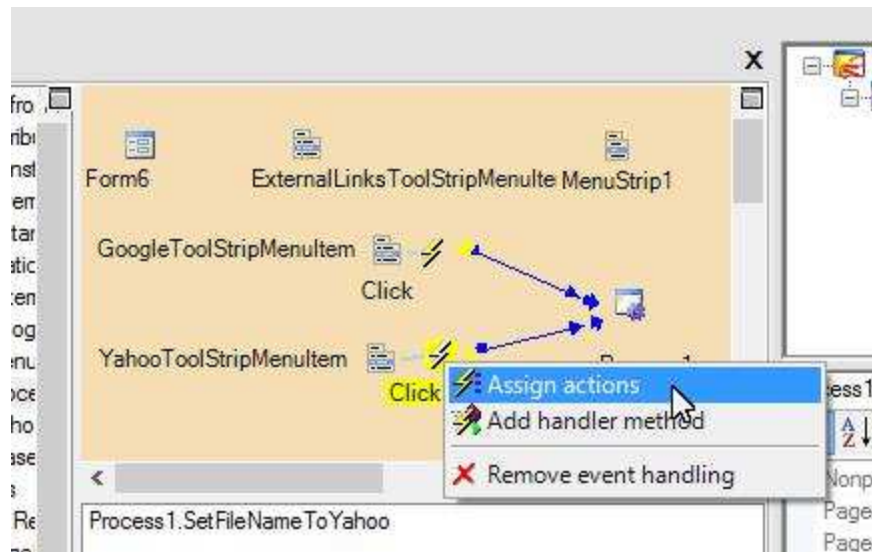
Specify Yahoo web URL:



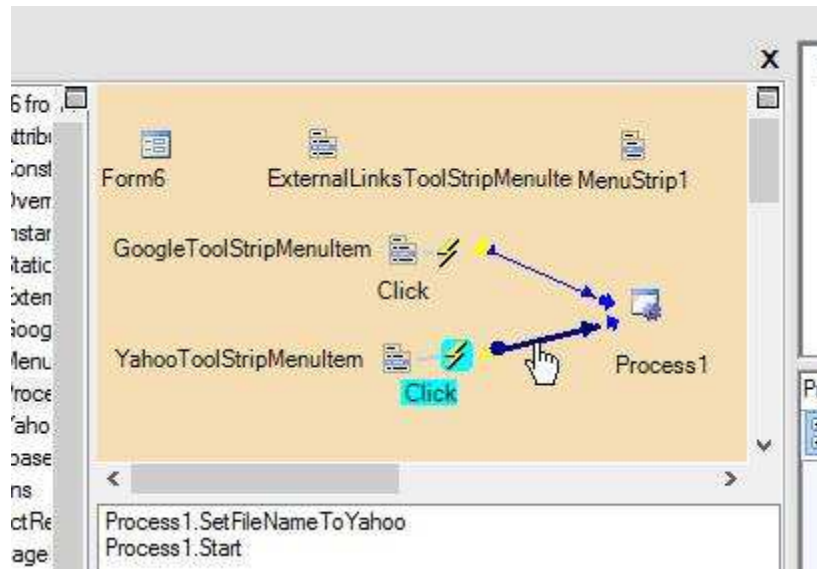
The action is created and assigned to the Click event:



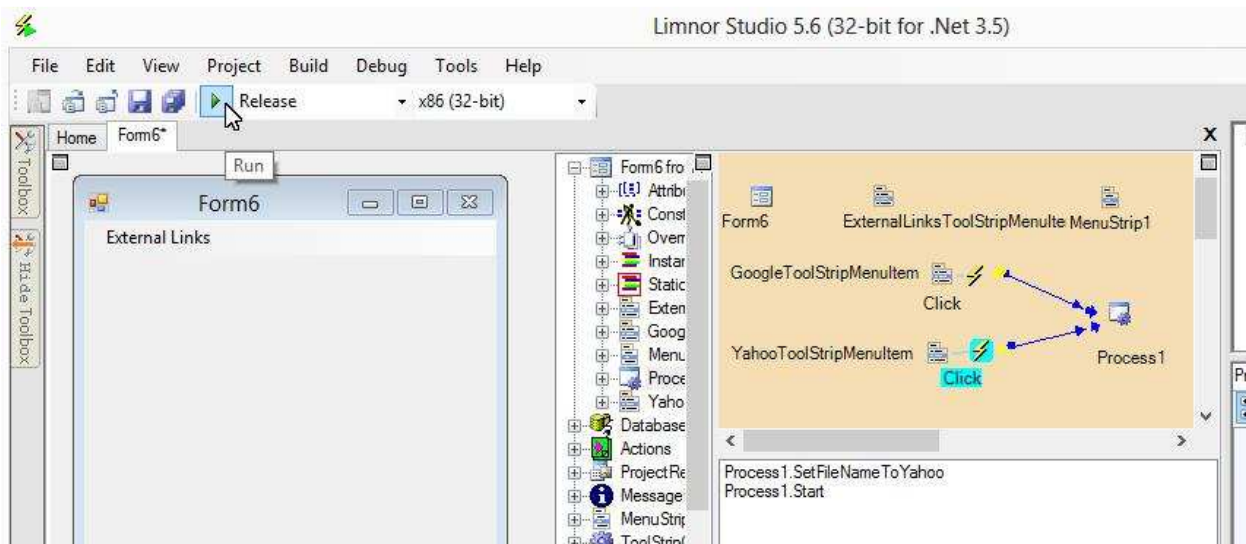
We need to assign the Start action of the Process to the same event:



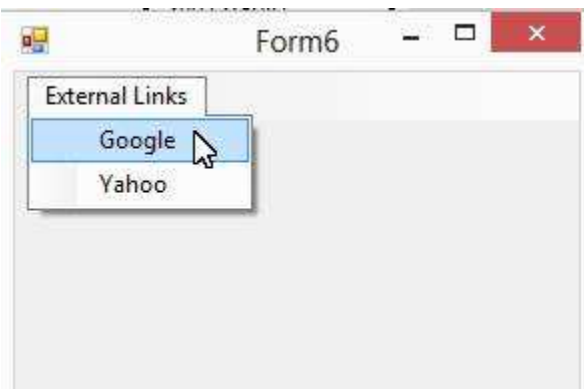
The action is assigned to the Click event:



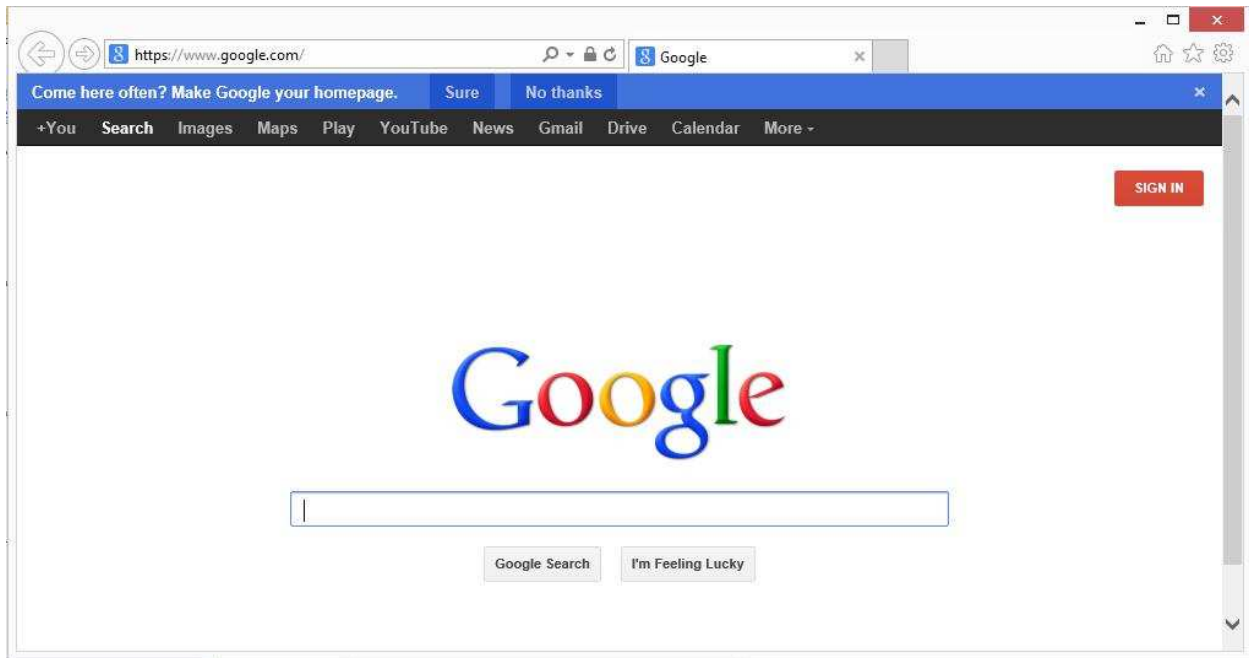
Test



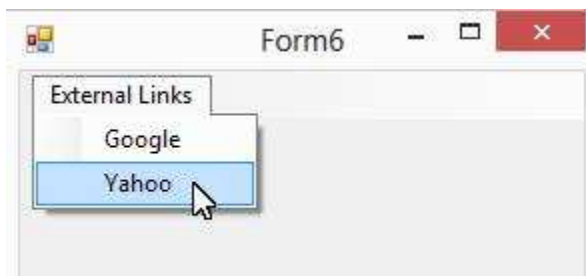
The form appears. Choose menu "Google":



The Google web site is displayed in the default web browser:



Choose menu "Yahoo"; the Yahoo web site is displayed:



The image is a screenshot of a web browser displaying the Yahoo! homepage. The browser's address bar shows the URL <http://www.yahoo.com/>. The navigation menu includes Home, Mail, News, Sports, Finance, Weather, Games, Groups, Answers, Flickr, and More. The main content area features a large advertisement for Netflix, showcasing the show 'Arrested Development' with the text 'Watch Instantly! Cancel Anytime.' and a '1 MONTH FREE' offer. Below the ad, there is a 'Trending Now' section with a list of names: 1 Miranda Cosgrove, 2 Johnny Depp, 6 Sheriff Joe Arpaio, and 7 Nelson Mandela. The browser interface also includes a search bar, a 'Sign In' button, and a 'Mail' icon.

Feedback

Please send your feedback to support@limnor.com.