

# Send Emails from Web Pages

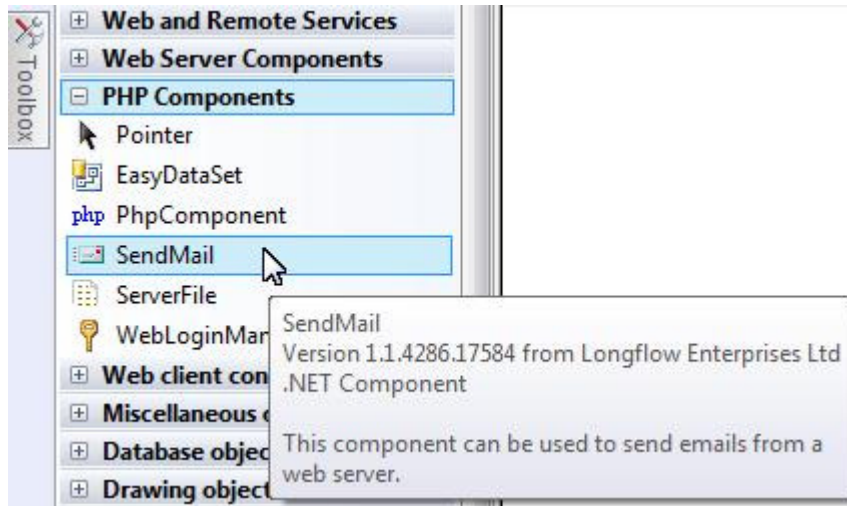
---

## Contents

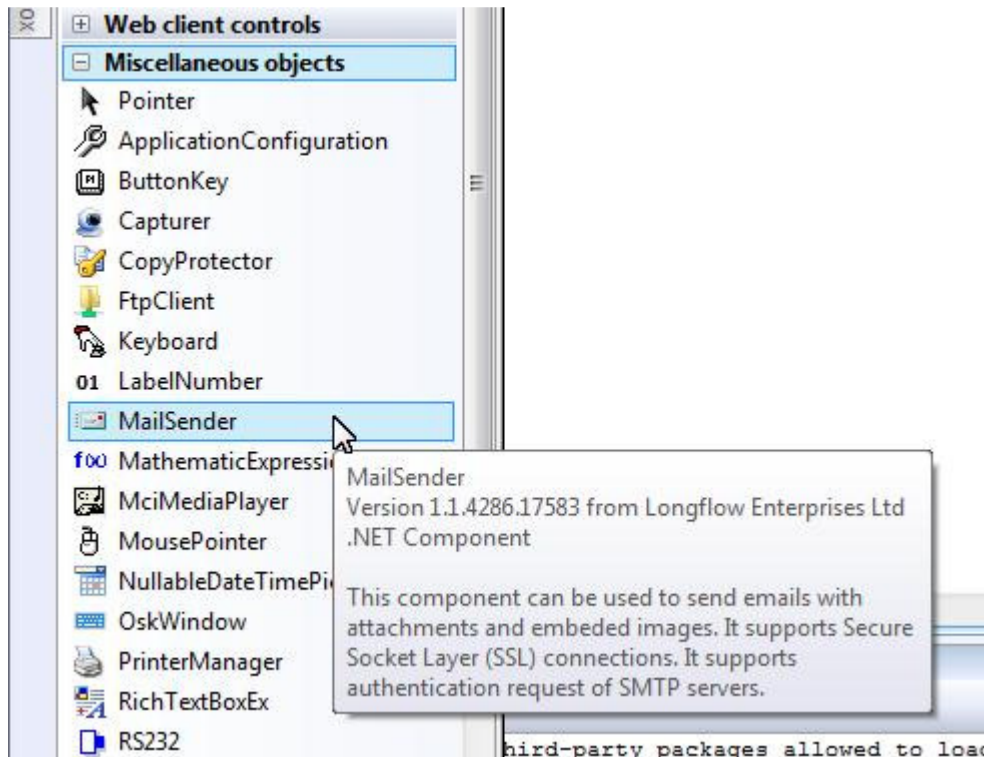
Introduction .....	1
Email Attachments .....	3
File Selector.....	3
Change button image.....	4
Display file names.....	5
Mail Properties.....	6
Attachments.....	6
EmailSender .....	7
From.....	7
SMTP Properties.....	7
Email Actions.....	8
Data Transfer Actions .....	8
Send Mail Action .....	11
Showing Result.....	12
Assign Actions to a Button .....	13

## Introduction

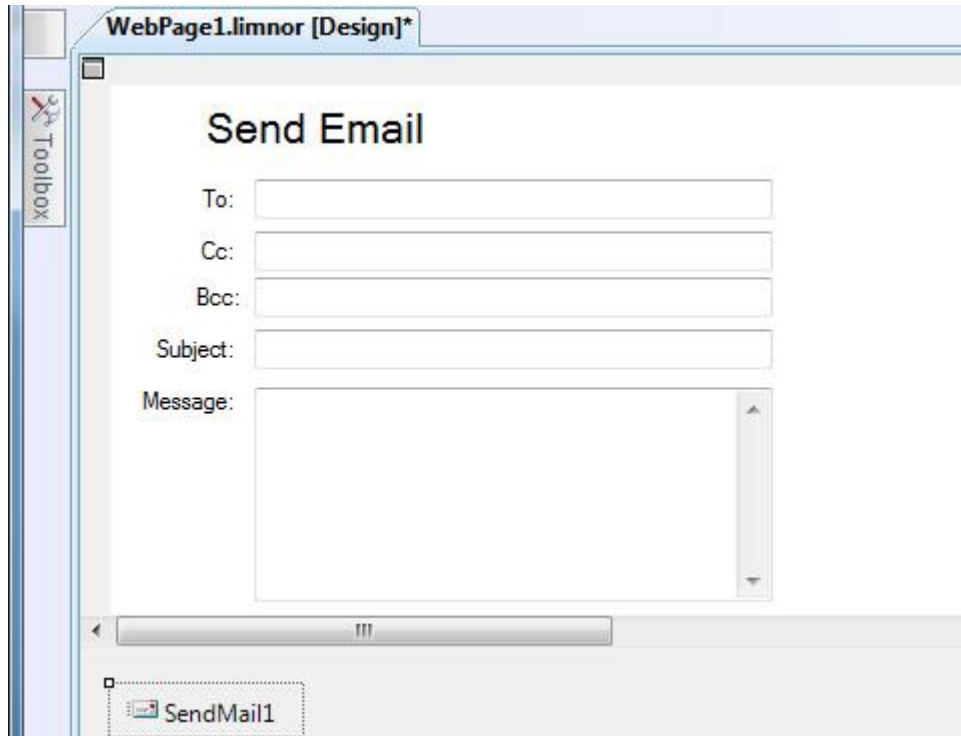
SendMail component for PHP can be used to send emails from a PHP web application.



MailSender component for .Net can be used to send emails from an ASPX web application.



This document describes sending emails from a PHP web application. It uses text boxes for entering email parameters such as receiver address, subject, etc. It uses a TextArea to enter email message. It uses a file selector to add attachments to the email.



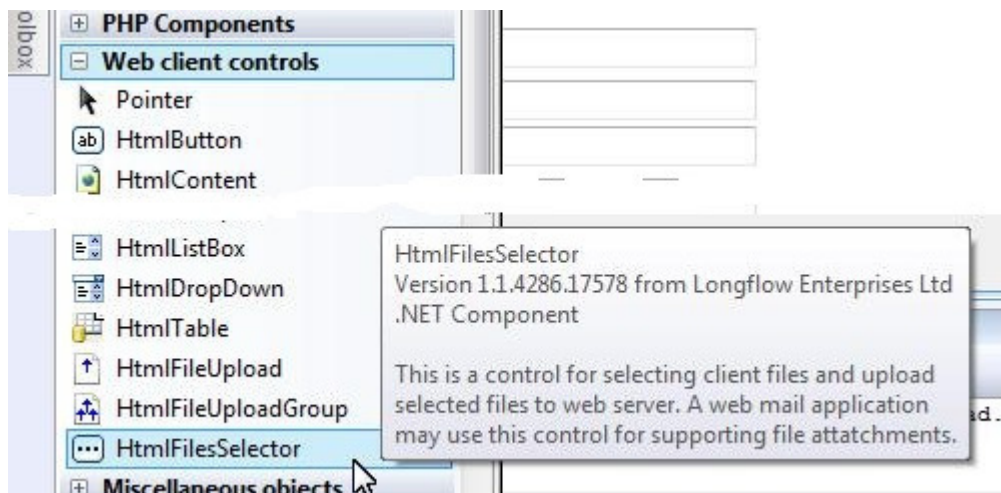
The contents of this document were tested on IE, Opera, Chrome, Safari, and FireFox.

The SendMail component uses PHPMailer. See <http://phpmailer.worxware.com/>

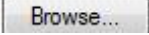
## Email Attachments

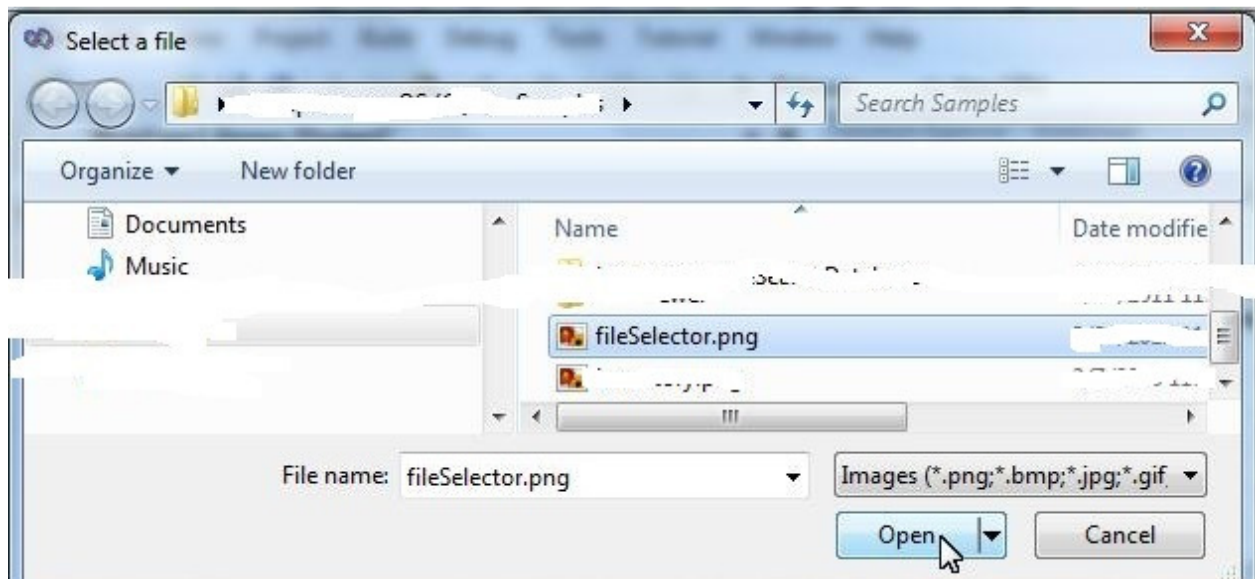
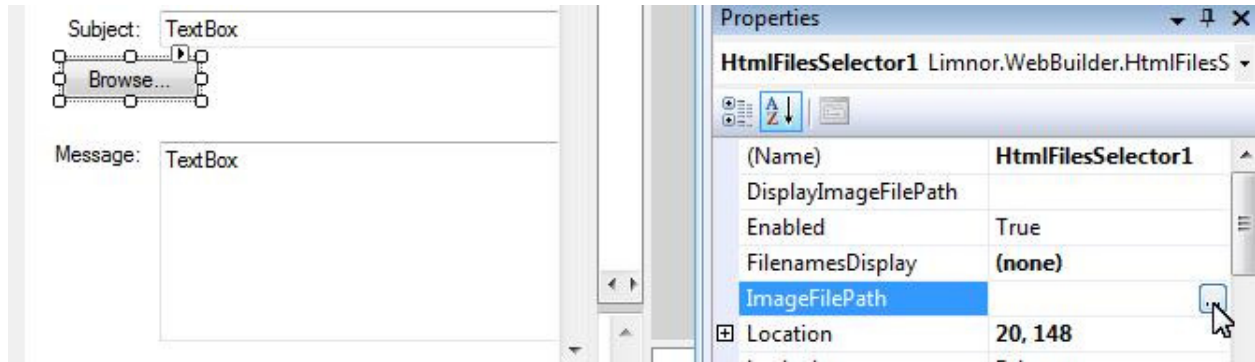
### File Selector

HtmlFilesSelector can be used to select files for attachments.

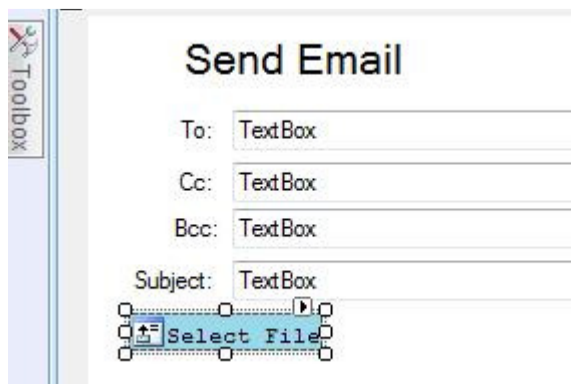


## Change button image

By default the file selector shows as a Browse button, . You may change the image by setting its ImageFilePath property:

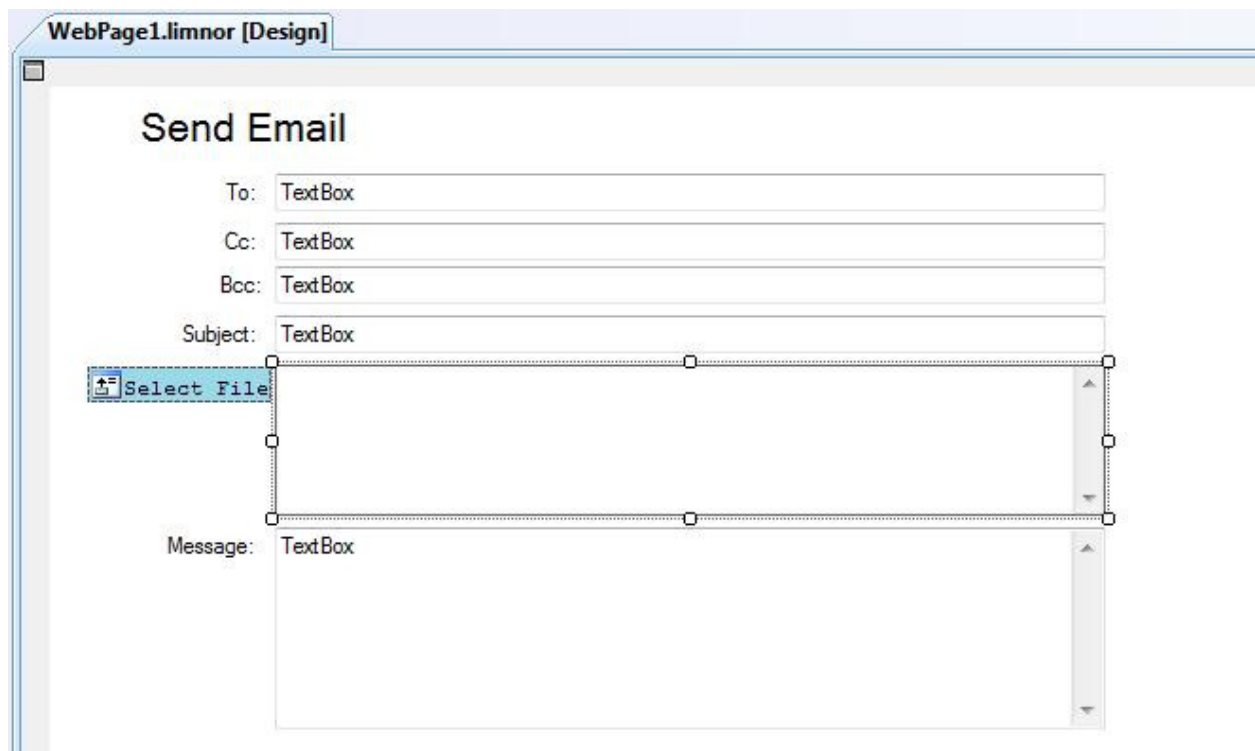
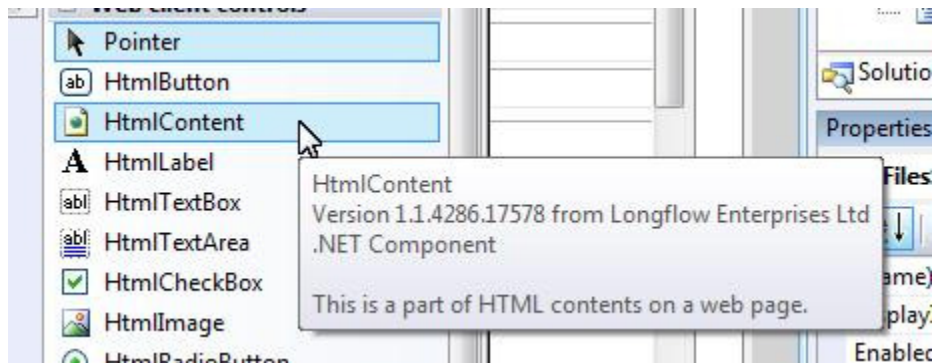


The appearance of the file selector is changed:

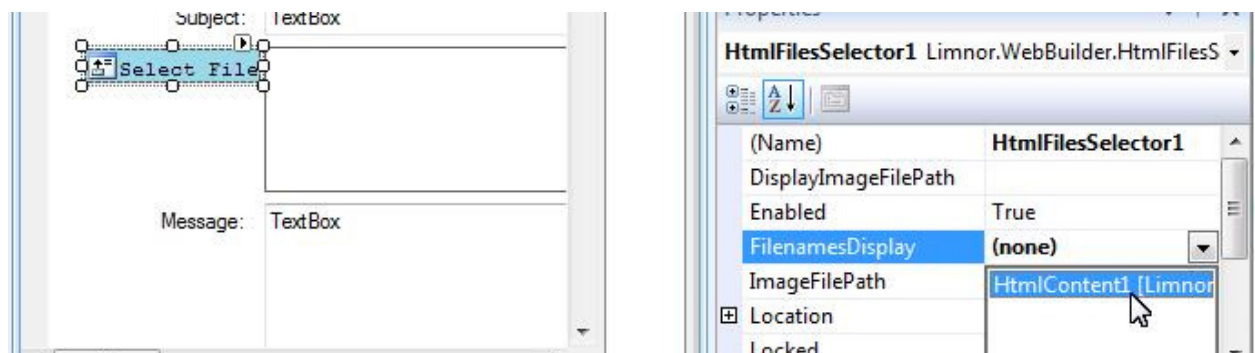


## Display file names

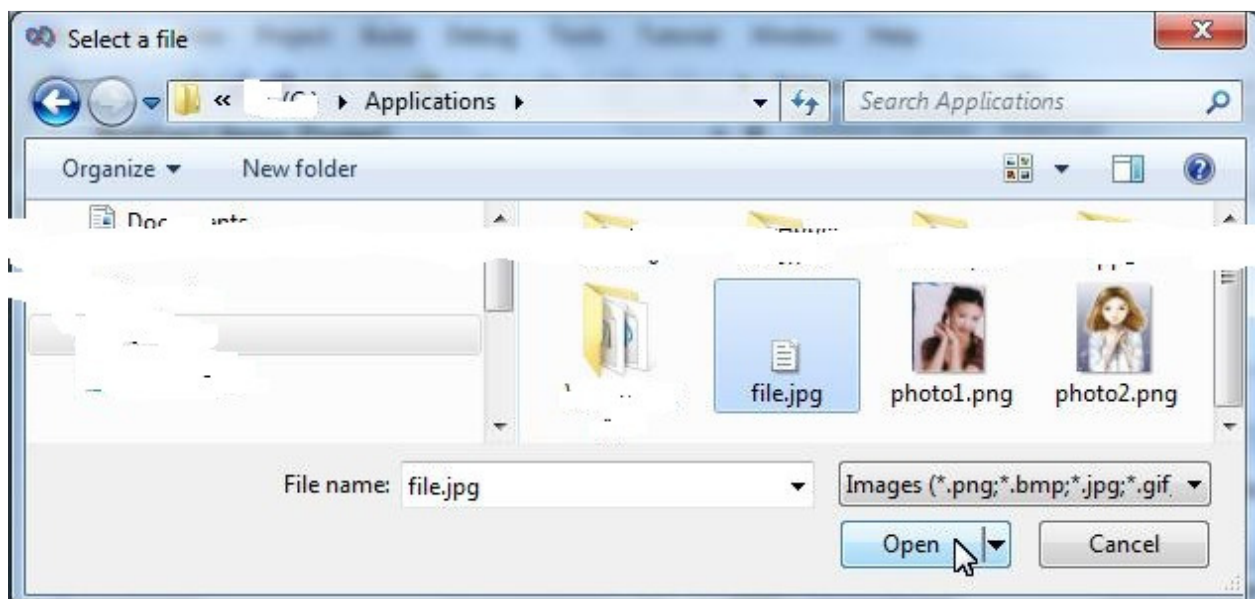
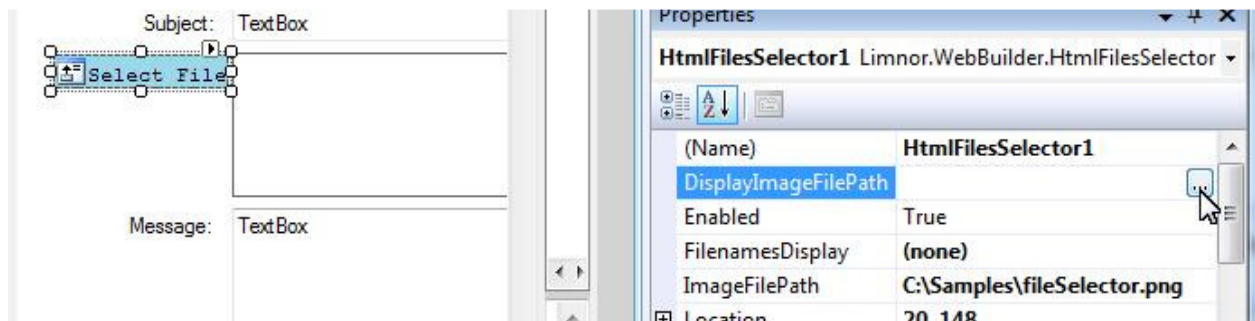
We may use an HtmlContent to display file names of selected files:



Set the FilenamesDisplay property of the file selector to use the HtmlContent:



The file names will be displayed in HtmlContent separated by commas. You may choose to add an image before each file name, by setting the DisplayImageFilePath property:



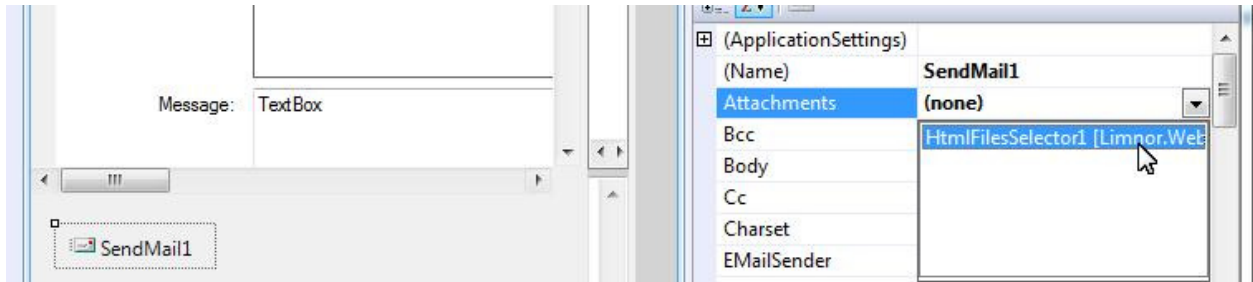
We finish setting up the file selector:



## Mail Properties

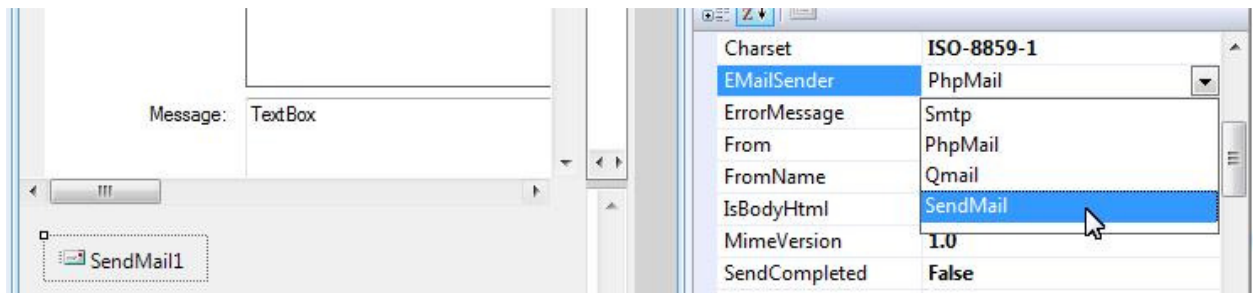
### Attachments

Set the Attachments property to the file selector on the web page:



## EmailSender

Set EmailSender to the email sender your web server supports:



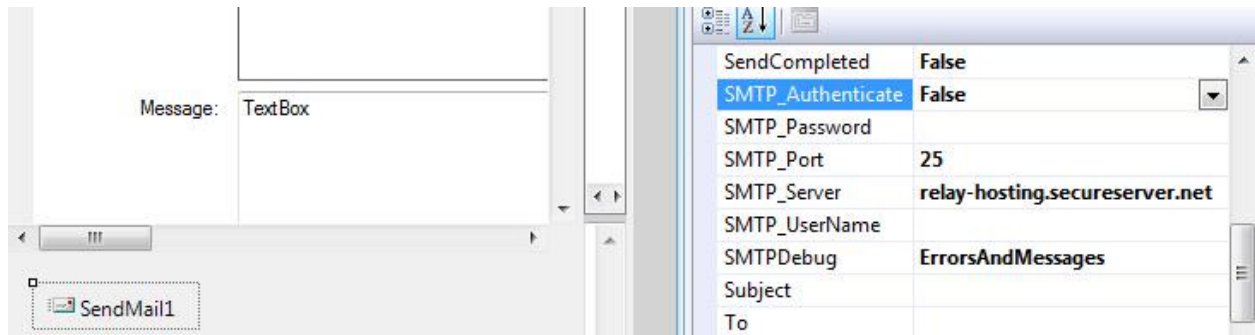
## From

Set From property to an email address. Note that your web server may only allow certain email accounts as the "From" property.



## SMTP Properties

Set the SMTP properties according to your web server's requirements. You may contact your web server administrator for how to set these properties.

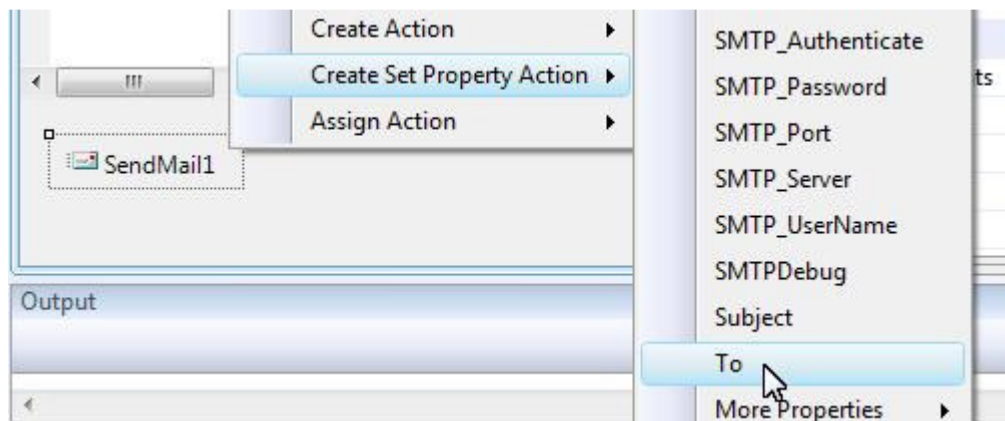


## Email Actions

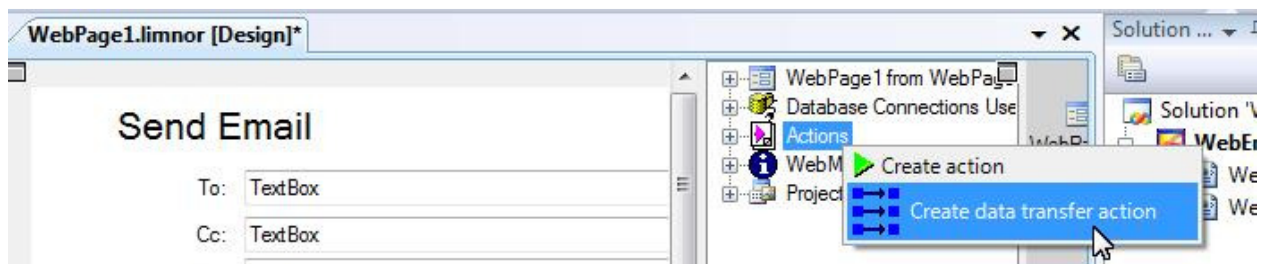
### Data Transfer Actions

We need to use actions to pass the data entered by the web visitor on the web page to the SendMail component.

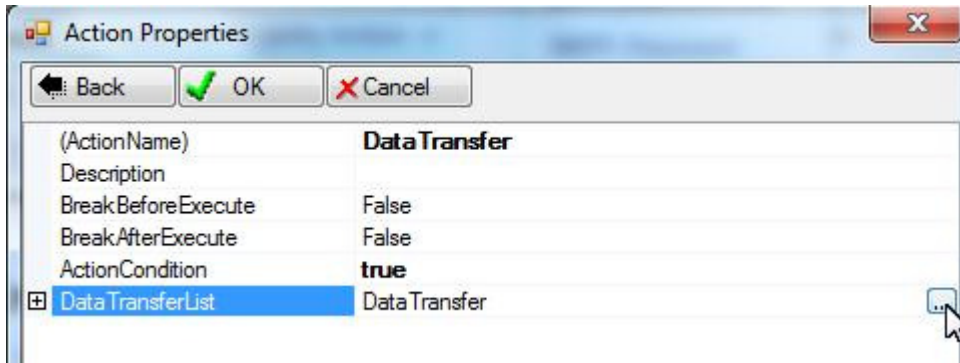
Usually we may create one "Set Property Action" for each property in the SendMail component to pass data to each property. For example, right-click SendMail; choose "Create Set Property Action"; choose property "To":



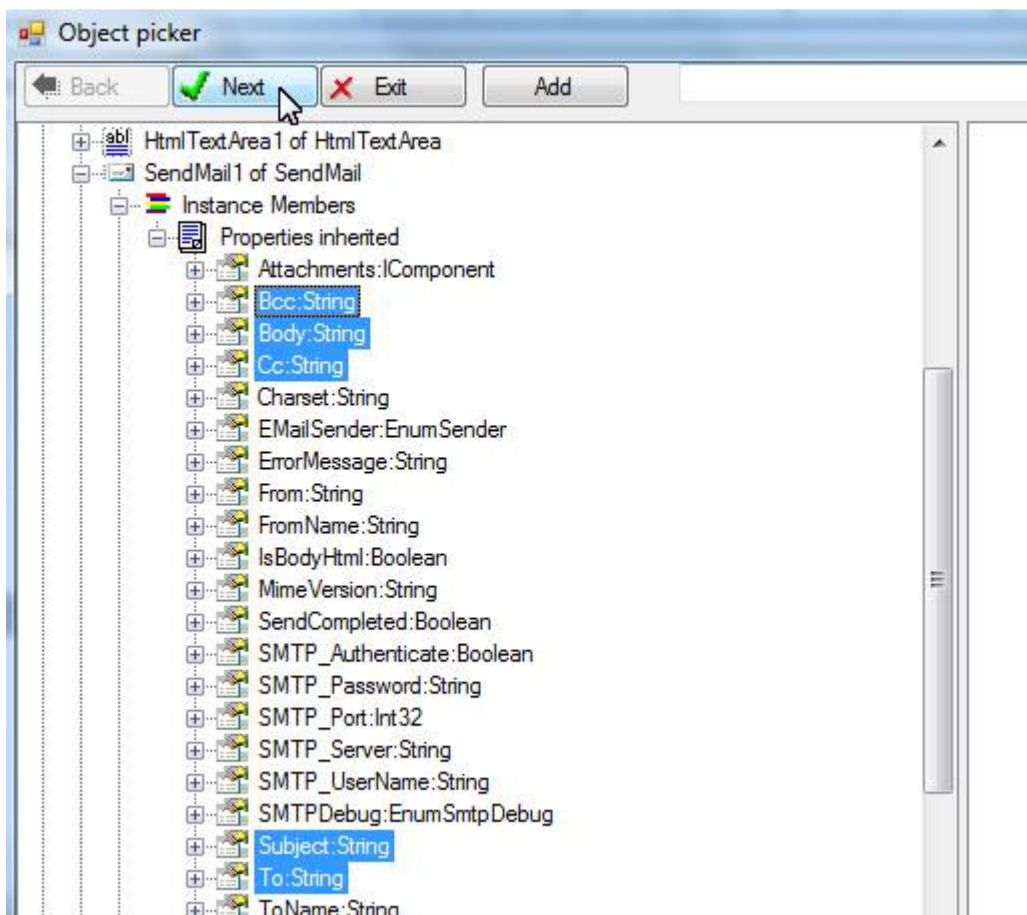
But we have many properties to set. We do not have to create one action for one property. We may create one data-transfer action to set all the properties we want to. Right-click Actions node in the Object Explorer; choose "Create data transfer action":



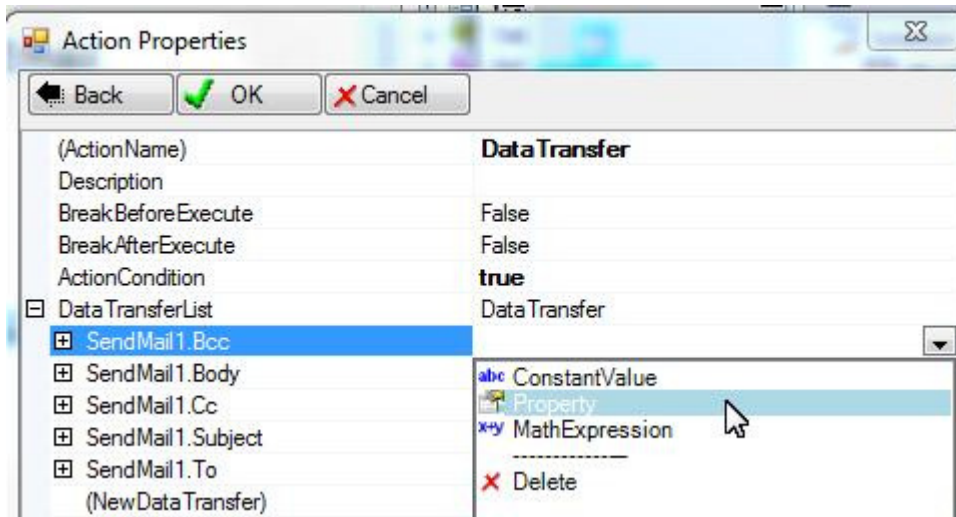
Click "..." to select properties to be set:



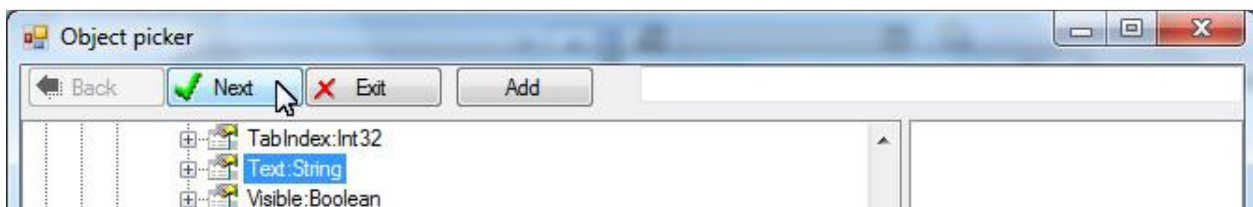
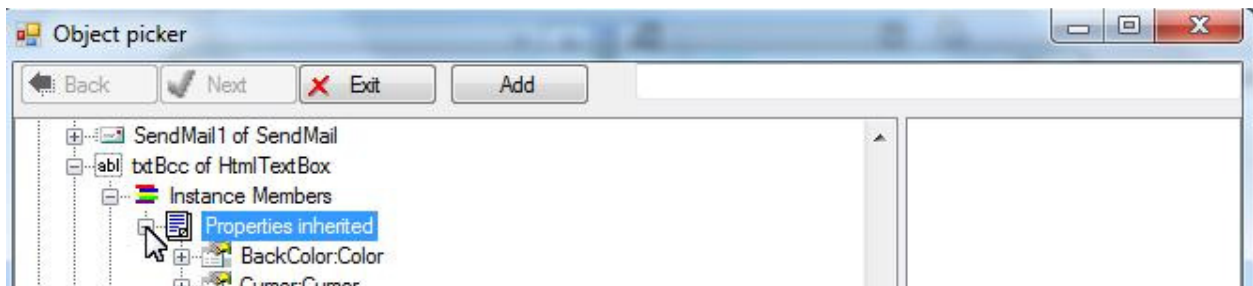
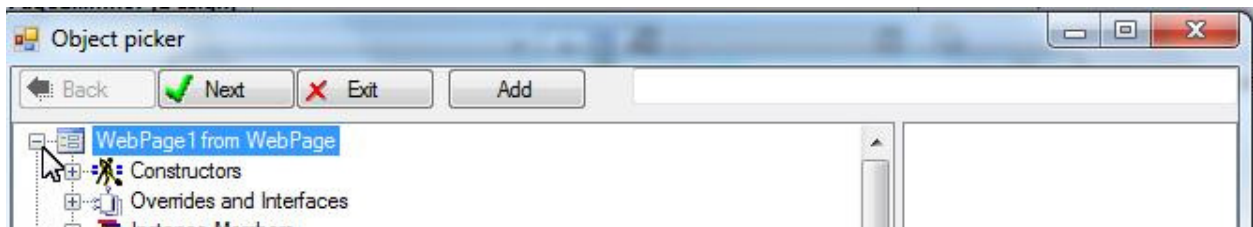
Select all the properties we want to; click “Next”:



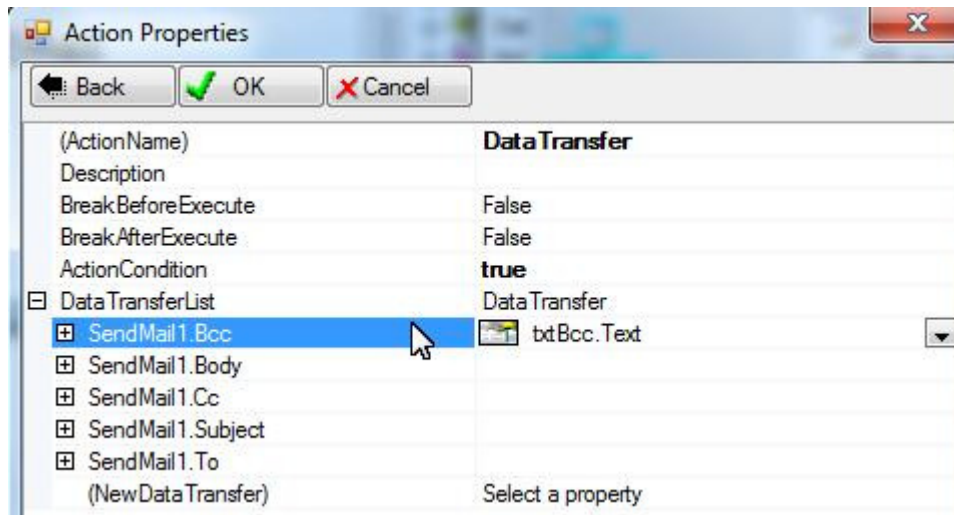
For each property, select “Property” to select a value from the web page. For example, select the Text property of txtBody for the Body property:



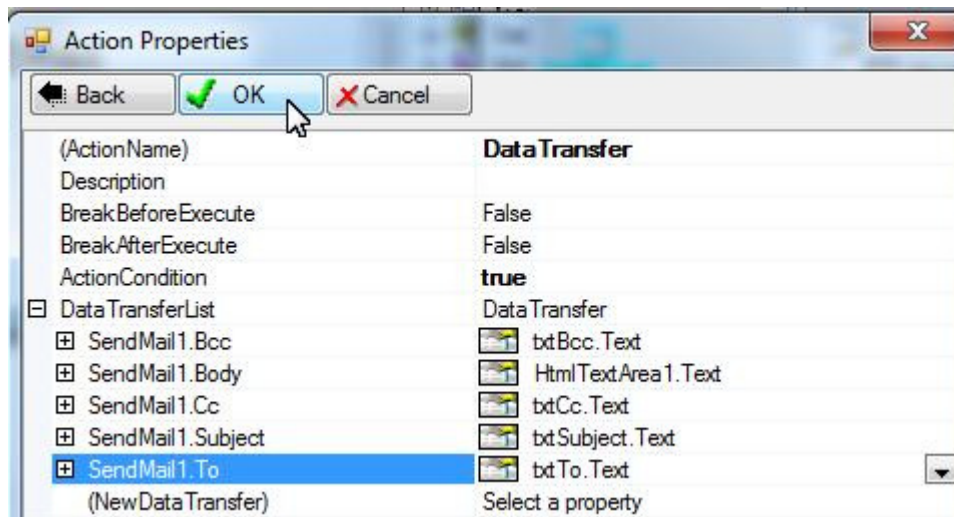
Select the Text property of the text box txtBcc:



The Text property of the web control txtBcc is set to the Bcc property of the SendMail component:

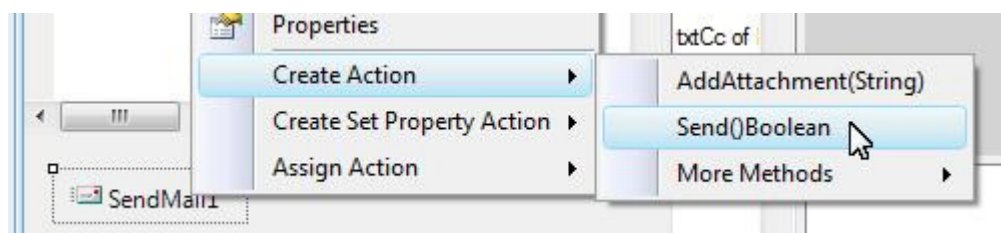


Similarly, select the Text property of the text boxes for the corresponding properties:

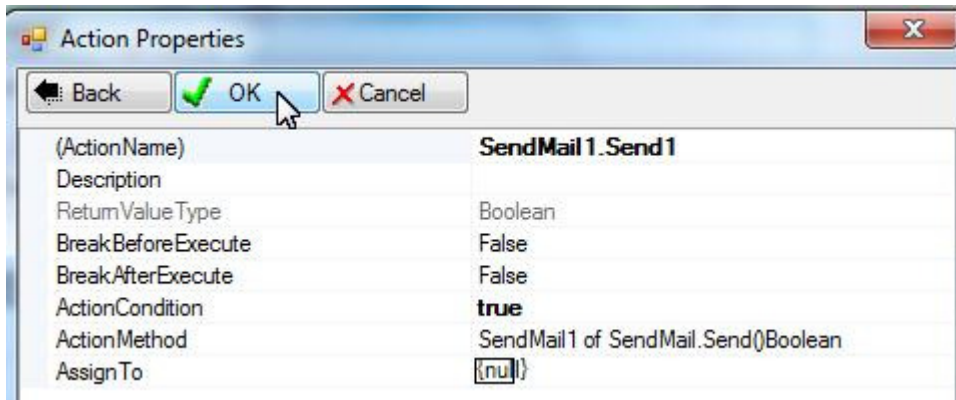


## Send Mail Action

Right-click SendMail component; choose "Create Action"; choose "Send":



Click OK to finish creating this action:

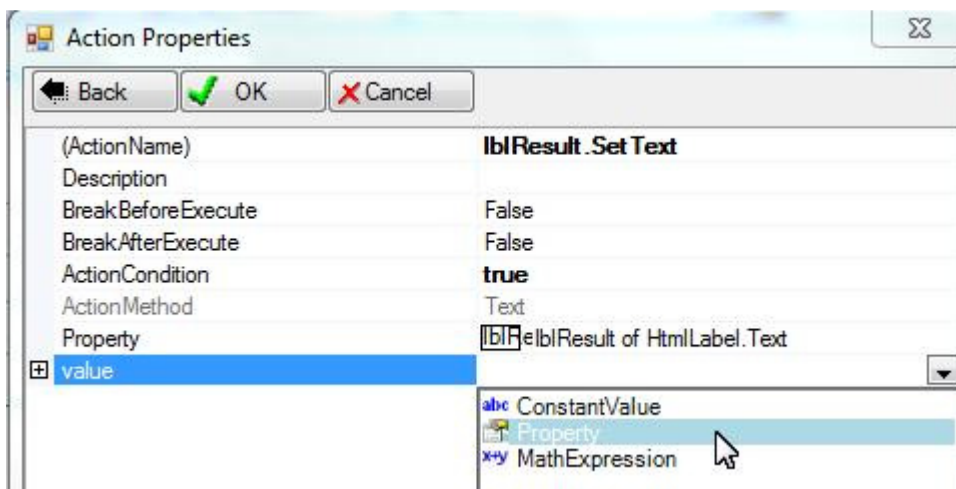


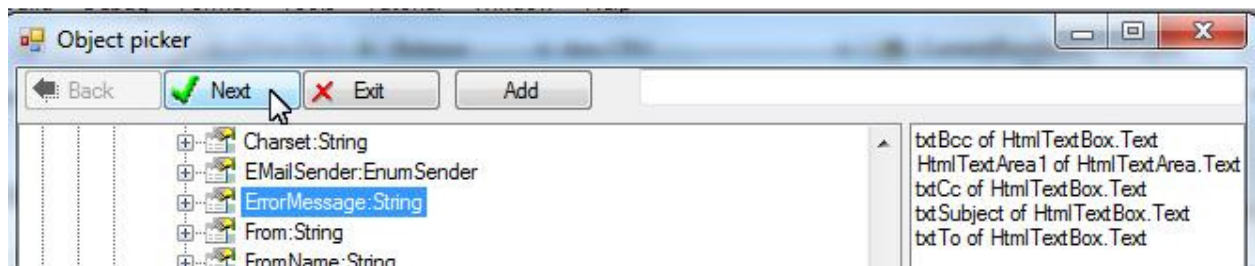
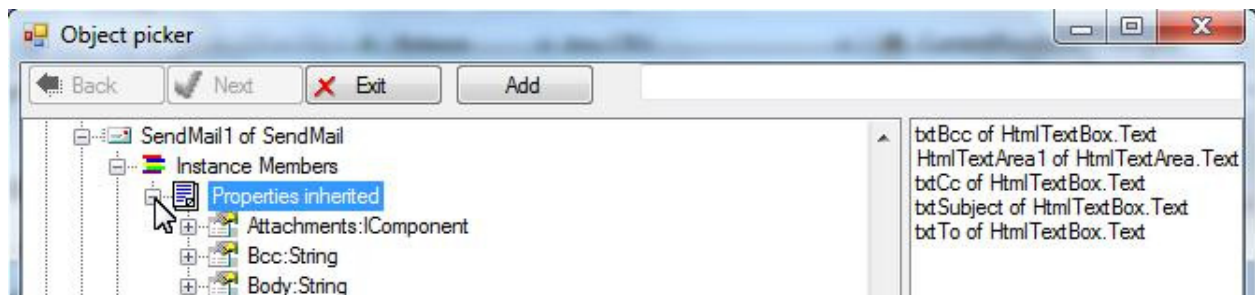
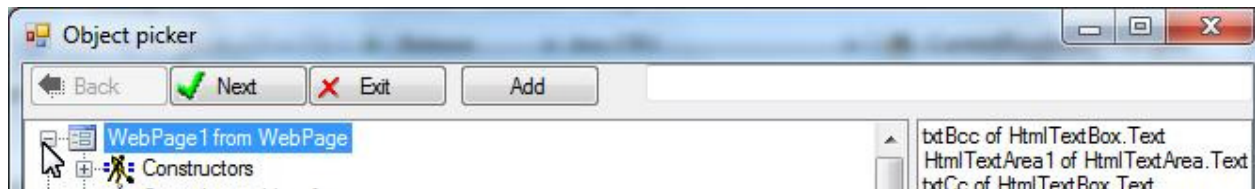
## Showing Result

We use a label to show mail sending result. We may create an action to show the ErrorMessage property of the SendMail to the label. Right-click the label; choose "Create Set Property Action"; choose "Text" property:

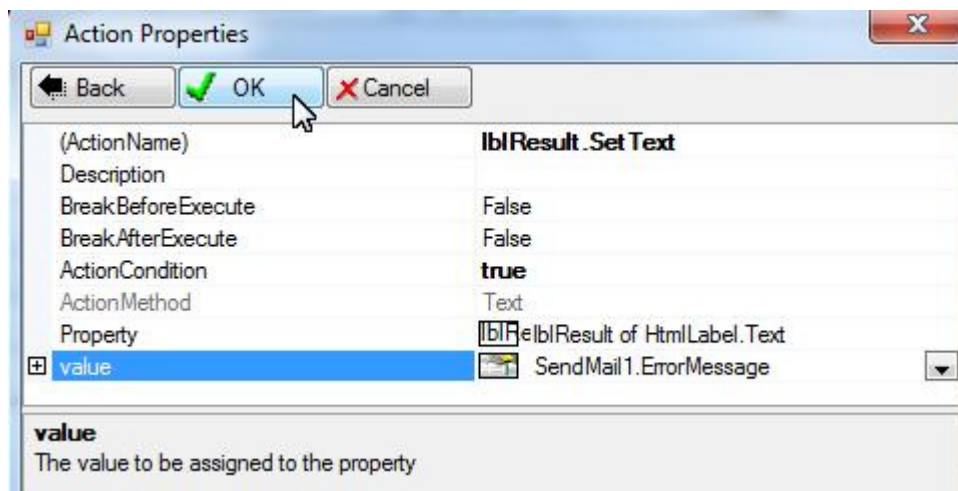


Select "Property" for the "value" to select the ErrorMessage of the SendMail:



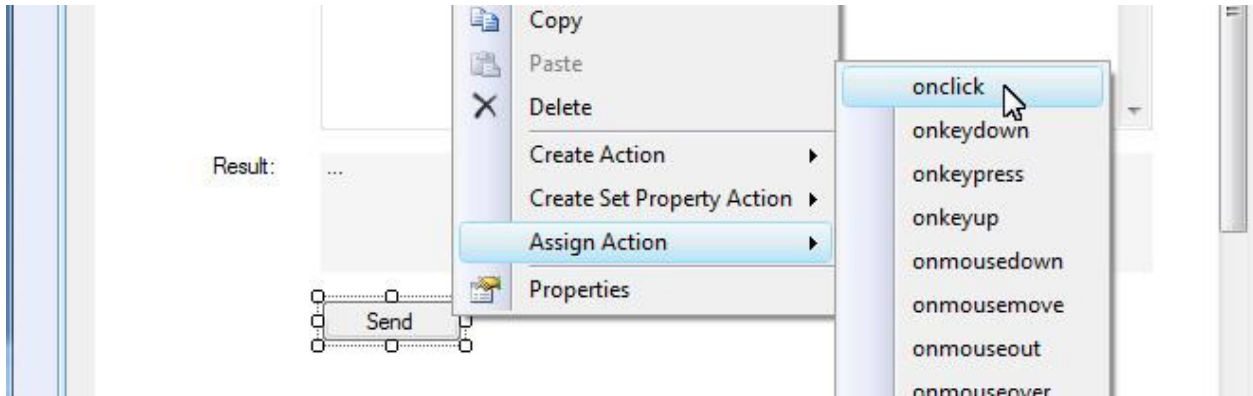


Click OK to finish creating this action:

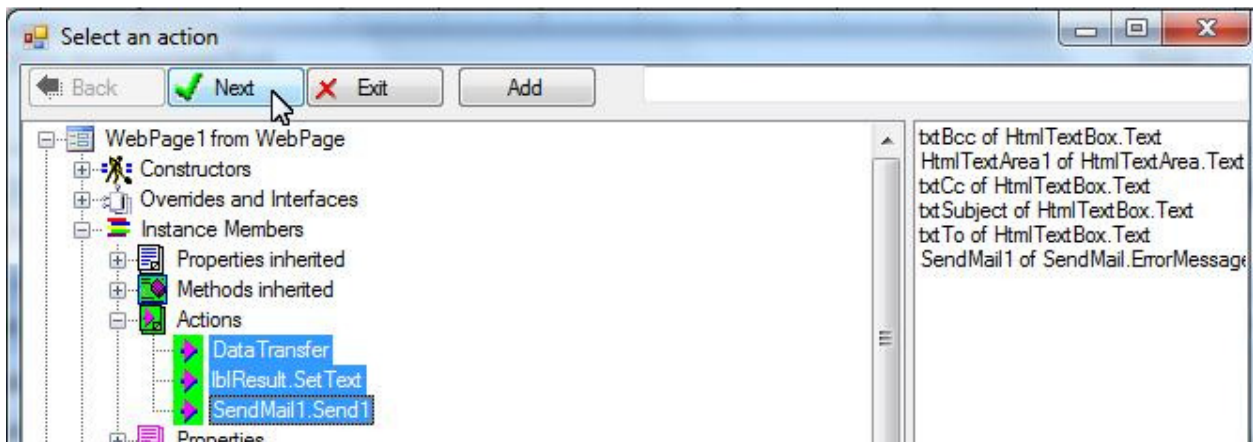


## Assign Actions to a Button

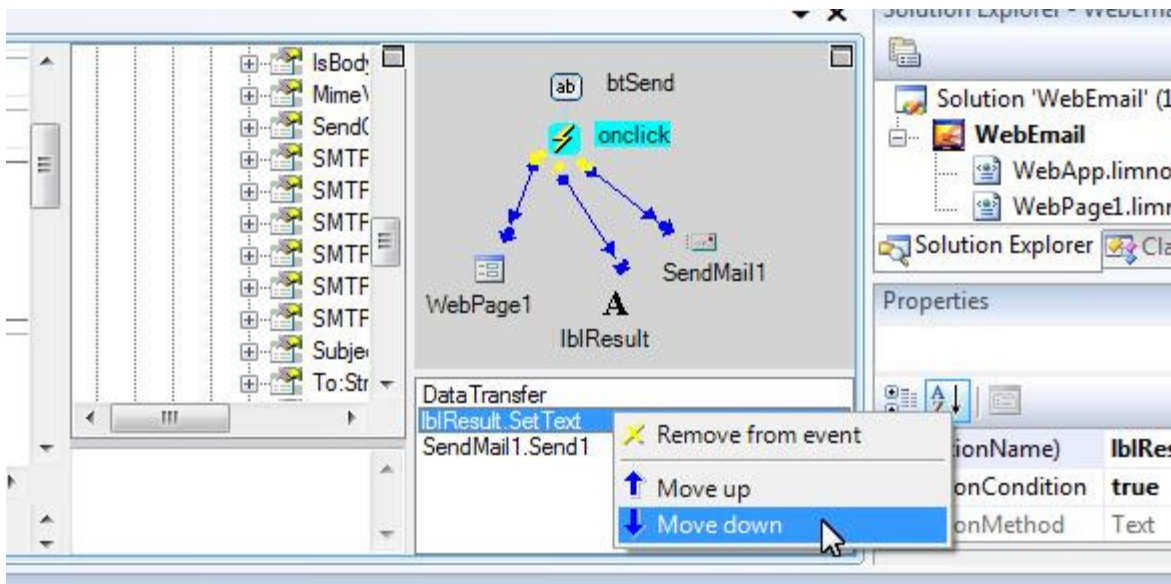
Add a button to the web page. Assign the actions to the button by right-click it. Select "Assign Action"; select "onclick" event:



Select the actions; click “Next”:



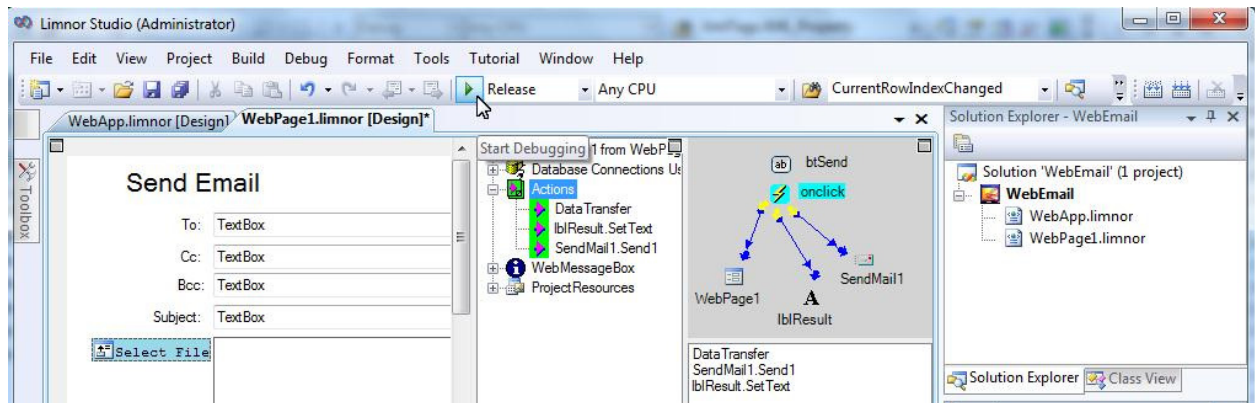
The actions are assigned to the button. Move the result-showing action to the last:



## Test Sending Emails

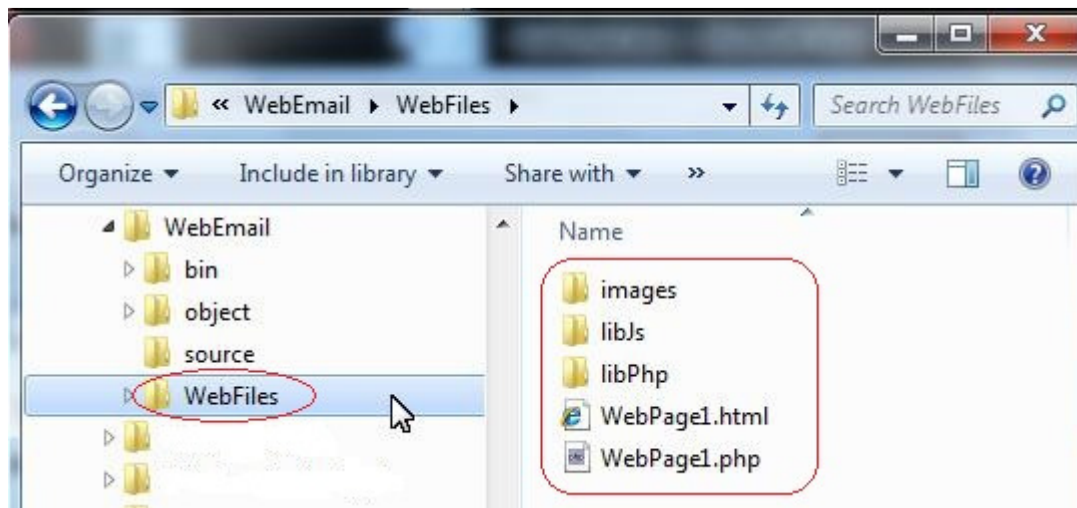
We may test the web application now.

In most Limnor Studio projects, we test by clicking the Run button:

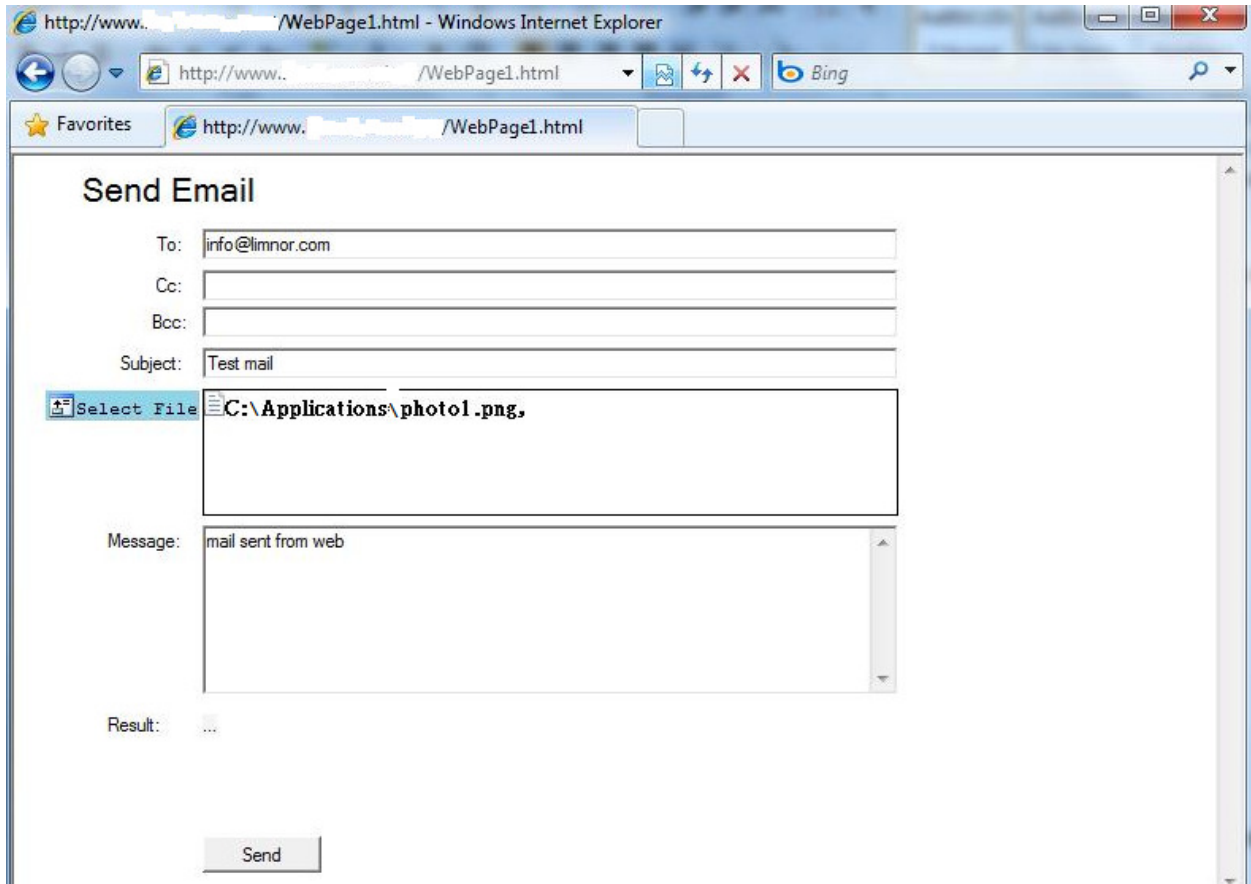


But for this project, it might not work because your local computer's web server might not have the email sending capability enabled.

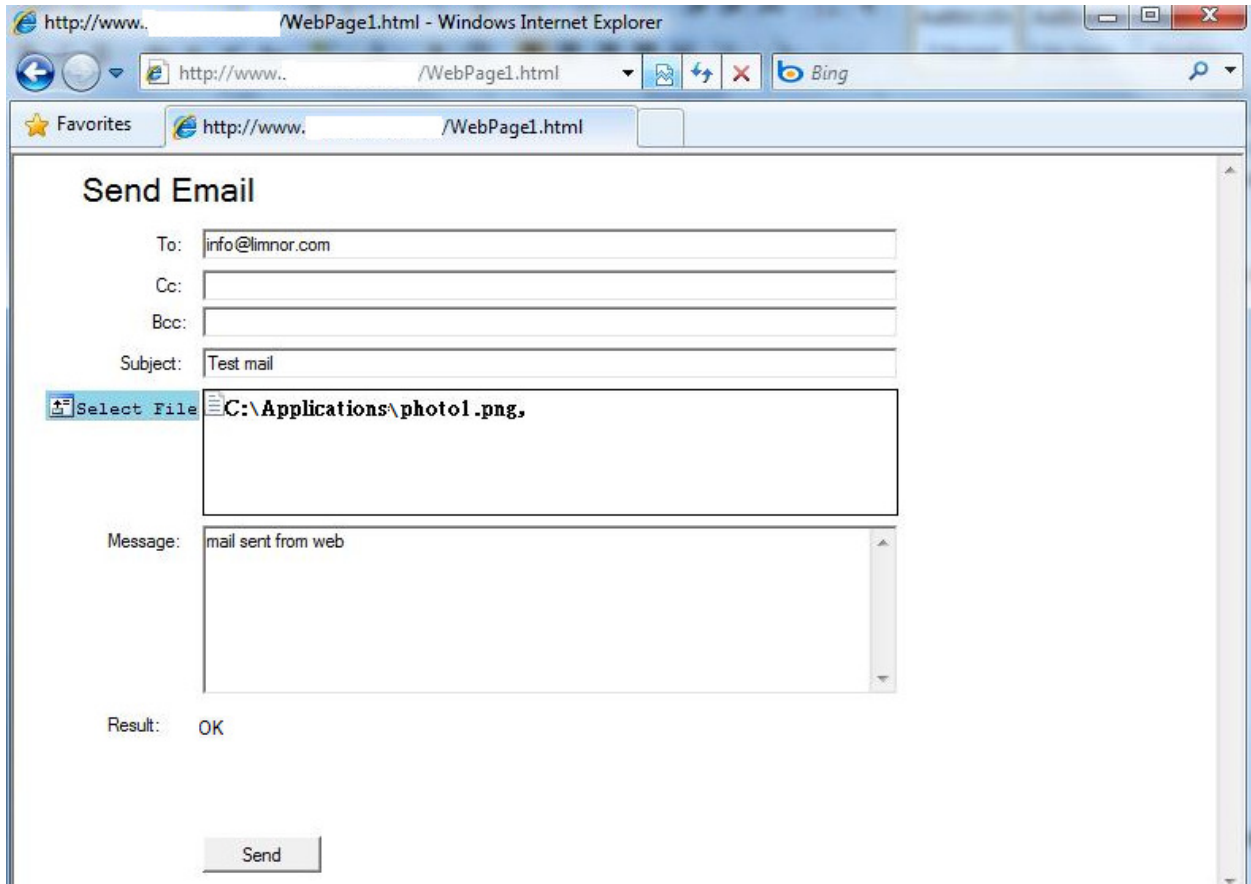
If the web server on your local computer does not have email sending enabled then you may upload the files under WebFiles folder of the project folder to a web server with email sending enabled.



Once the files are uploaded to a proper web server, we may access the web page, WebPage1.html, to test our application. The web page appears. We may enter some data on the web page:



Click the Send button. We can see OK appears:



The email arrives with the message and attachment.

This sample web application was tested under IE, FireFox, Opera, and Chrome.