

Image Data Binding in Web Applications

Contents

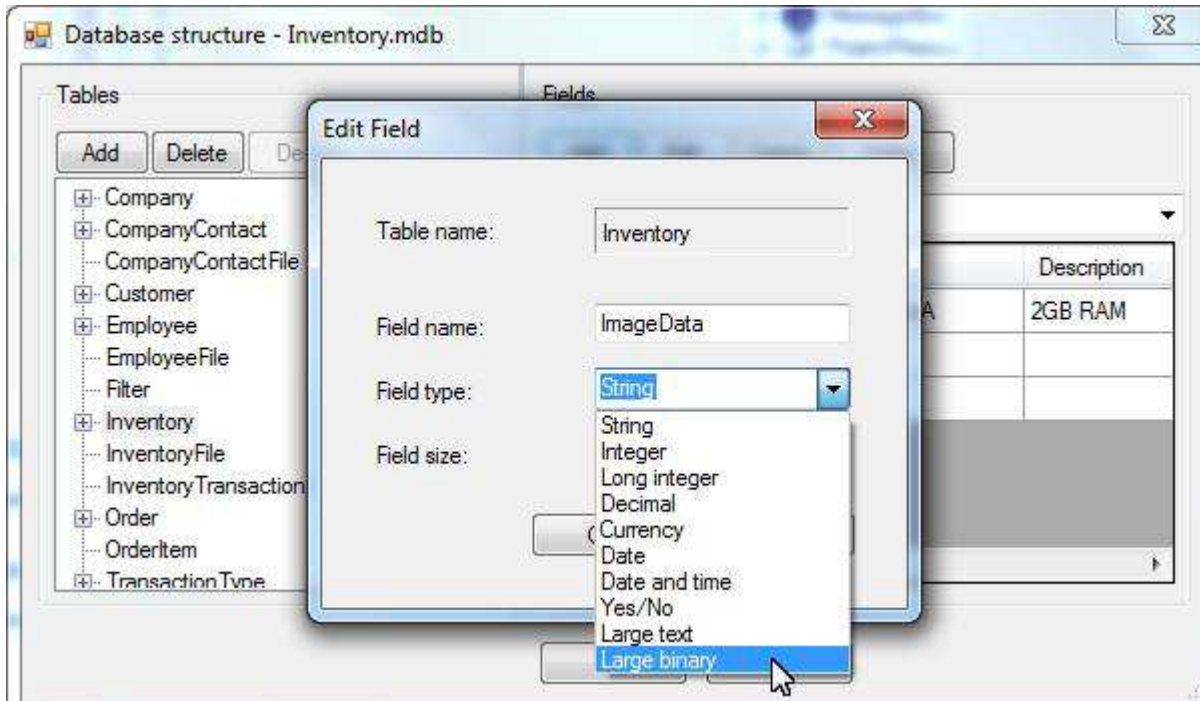
Save images in database	1
Save Image File Paths in Database.....	2
Specify a Blob field for Image	2
Image Data Binding.....	3
Image data-binding for tables.....	5
Notes.....	7
Feedbacks	7

This document is for image data binding in web applications. For image data binding in Windows standalone applications, see <http://www.limnor.com/support/DataBindingForImages.pdf>

Save images in database

An image needs large amount of storage space. Only binary variable length fields may hold images.

For Microsoft Access database, an OLE Object field should be used to save images. If you use Limnor Studio to create Access database then choose “Large binary” for a field for saving images:



For MySQL database, use LONGBLOB fields.

For other databases, try use LONGVARBINARY fields.

Save Image File Paths in Database

You may save the image files in your web server and save the image file paths in the database. The file paths must be in web URL format. It can be in absolute web paths or in relative web paths.

Sample of an absolute web path: <http://www.yourdomain.com/images/image1.jpg>

Sample of a relative web path: images/image1.jpg

Specify a Blob field for Image

When you use a LONGBLOB or a LONGVARBINARY field to store image data, to distinguish it from other uses, you need to set the `IsFieldForImage` property of the `EasyDataSet` to specify that the field is for image.

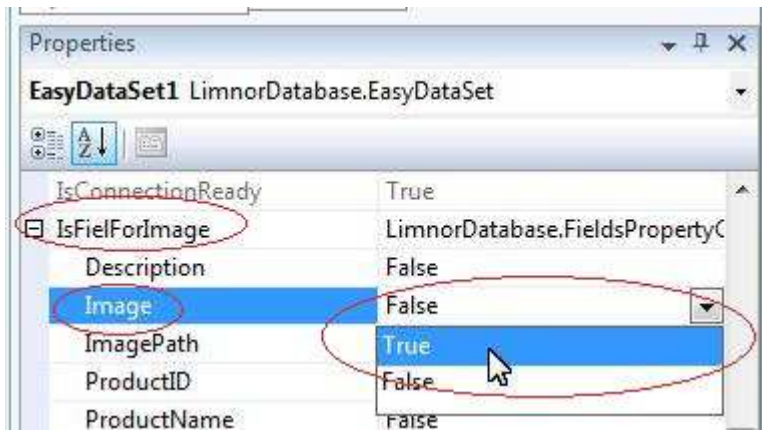
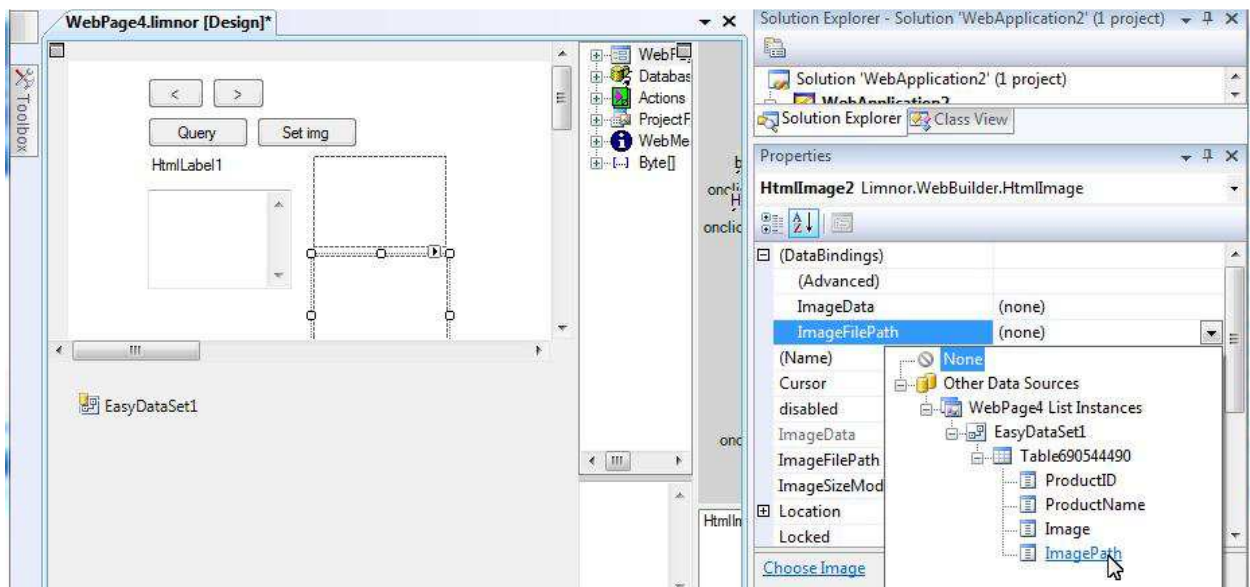


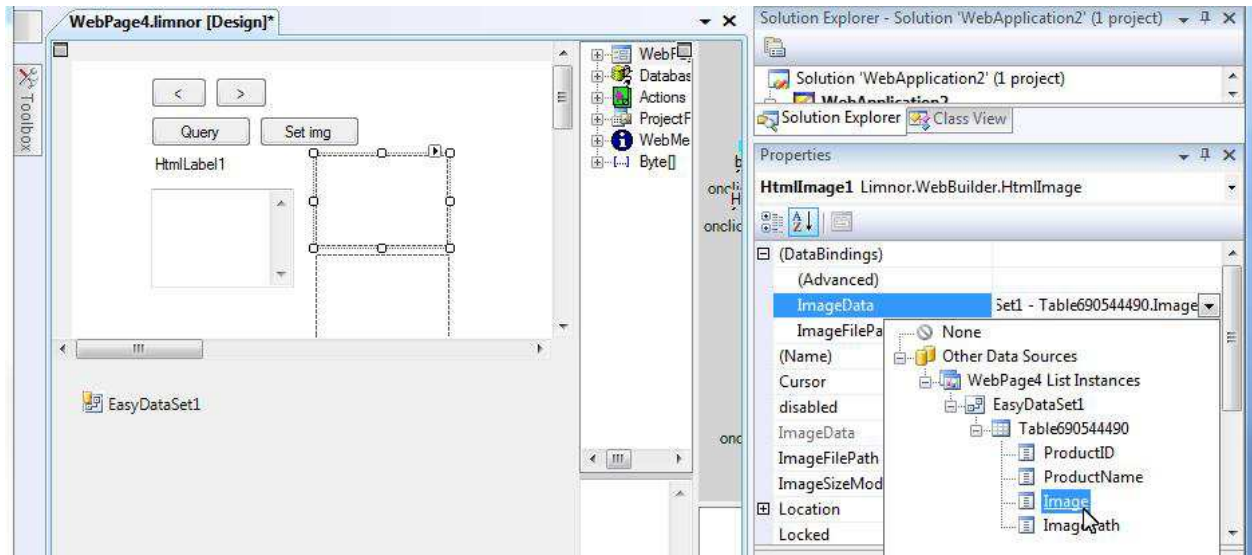
Image Data Binding

For web database programming, see <http://www.limnor.com/support/webDatabaseProgramming.pdf>

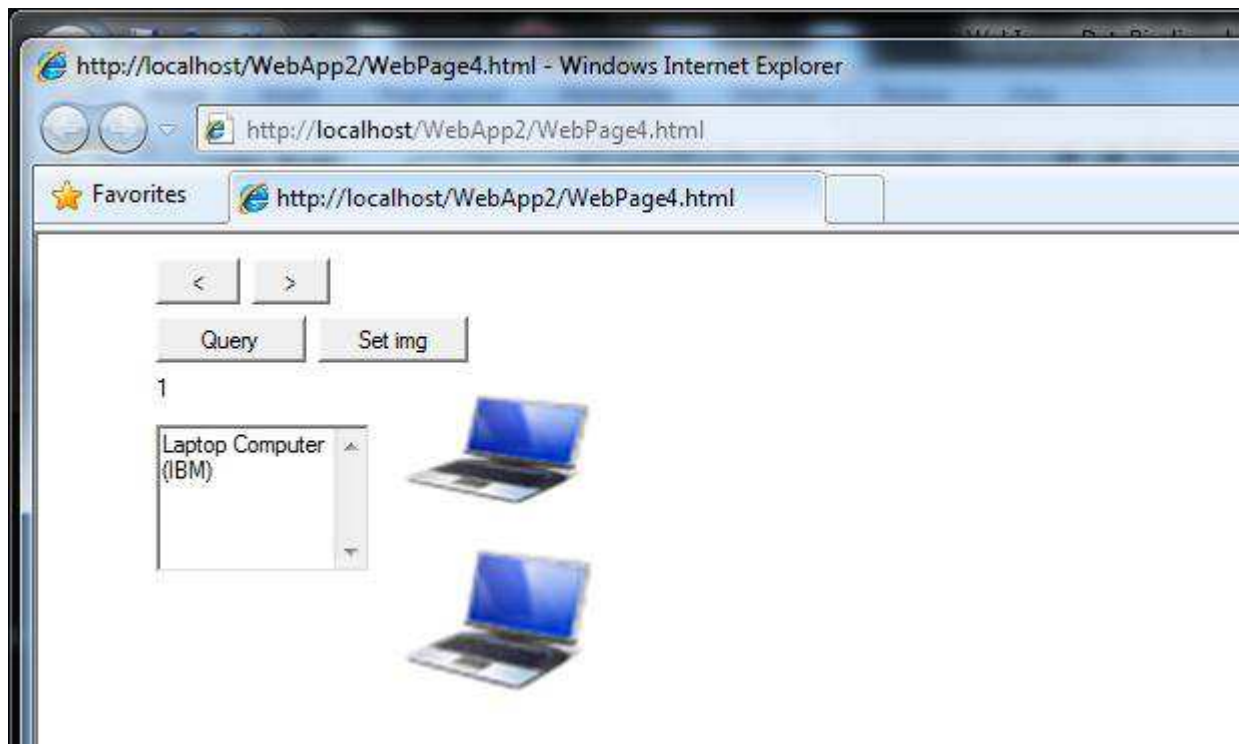
If you save image file paths in your database then bind ImageFilePath to the database field.



If you save binary image data in your database then bind ImageData to the database field.



Test the web project:



Navigate through the records:

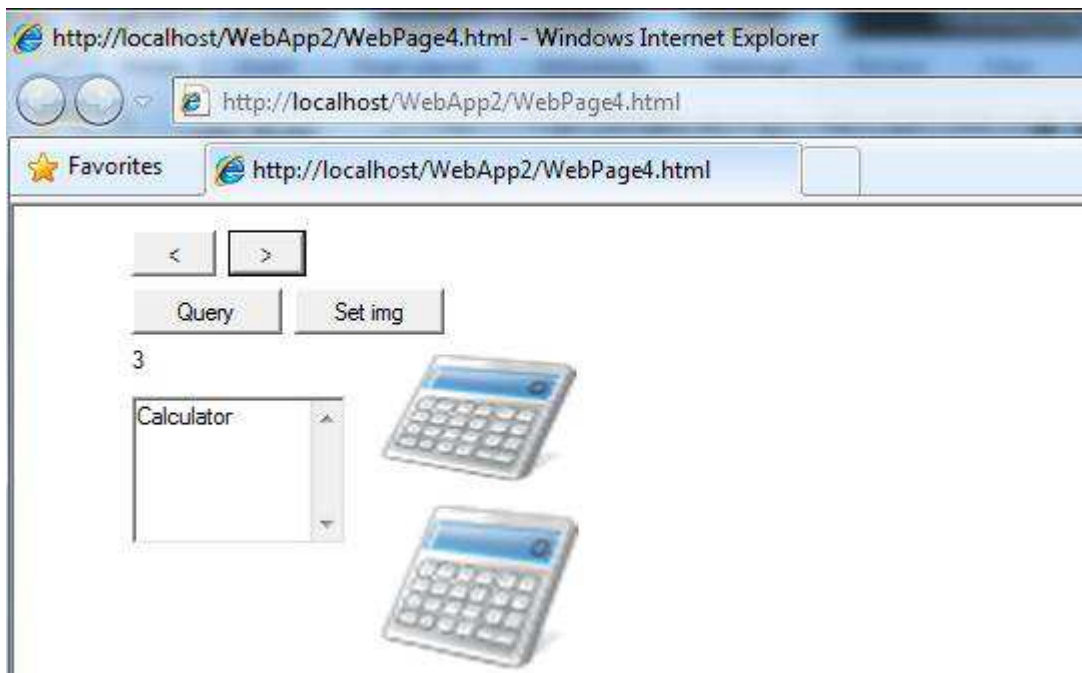




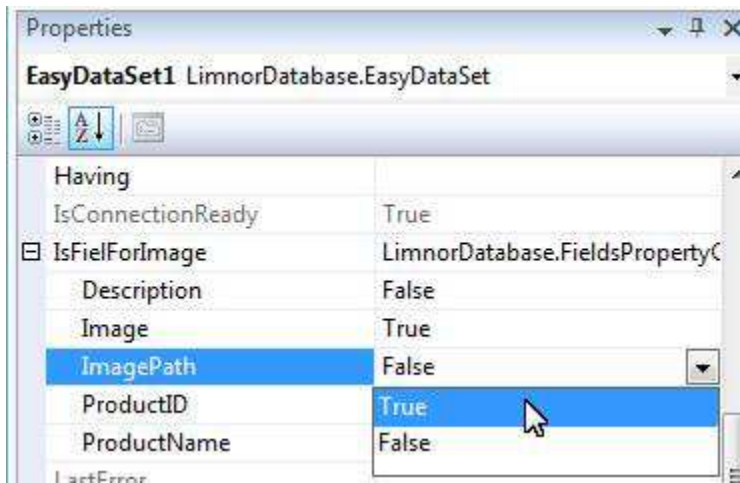


Image data-binding for tables

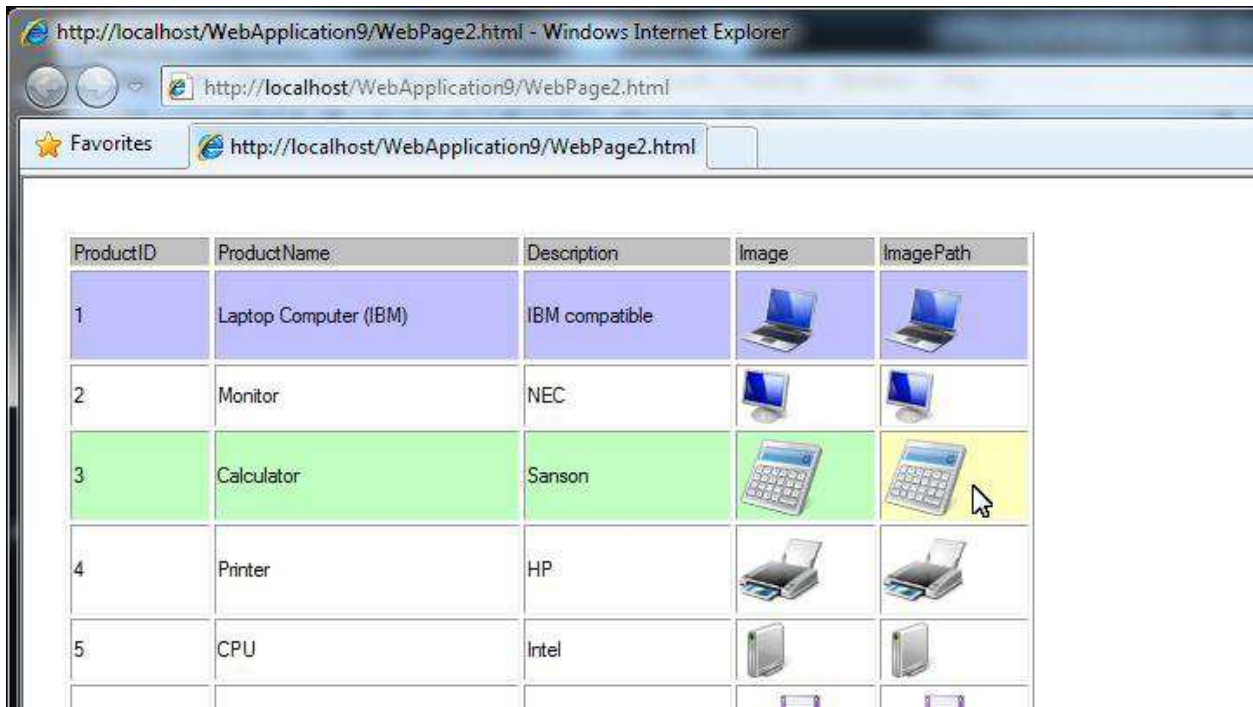
When binding a table to an EasyDataSet and indicate that a BLOB field is for image then the image will appear in the table:

ProductID	ProductName	Description	Image	ImagePath
1	Laptop Computer (IBM)	IBM compatible		images/Laptop.png
2	Monitor	NEC		images/Monitor.png
3	Calculator	Sanson		images/Calculator.png
4	Printer	HP		images/Printer.png

Suppose we have a text field, ImagePath, for image url. If we want to display image instead of text in the table, we may also set IsForImage property of the EasyDataSet for it:



The image path will be displayed as image:



Notes

Saving image file paths in database and binding ImageFilePath are more efficient for web page loading because the image data are not downloaded from web server until image data are used by image controls.

Saving image binary data in database and binding ImageData are less efficient for web page loading because all image data are downloaded for all records. Do not use this approach if image sizes are large and your query may return large number of records.

Feedbacks

Please send your feedbacks to support@limnor.com. Thanks!